

T8N, R92W, 6th P.M.

AXIA ENERGY

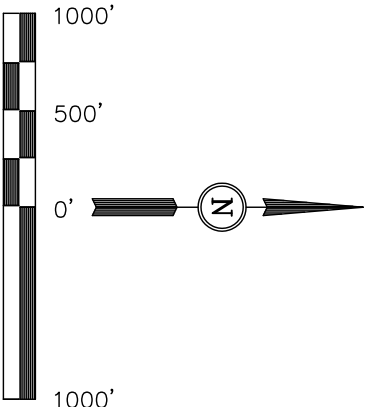
Well location, BULLDOG #20-12H-892, (SURFACE LOCATION) located as shown in the SW 1/4 NW 1/4 of Section 20, T8N, R92W, 6th P.M., Moffat County, Colorado.

BASIS OF ELEVATION

SPOT ELEVATION LOCATED AT THE NORTHEAST CORNER OF SECTION 10, T6N, R93W, 6th P.M. TAKEN FROM THE HORSE GULCH QUADRANGLE, COLORADO, MOFFAT COUNTY, 7.5 MINUTE QUAD (TOPOGRAPHIC MAP) PUBLISHED BY THE UNITED STATES DEPARTMENT OF THE INTERIOR, GEOLOGICAL SURVEY. SAID ELEVATION IS MARKED AS BEING 6246 FEET.

BASIS OF BEARINGS

BASIS OF BEARINGS IS A G.P.S. OBSERVATION.



CERTIFICATE

THIS IS TO CERTIFY THAT THE ABOVE PLAT WAS PREPARED FROM FIELD NOTES OF ACTUAL SURVEYS MADE BY ME OR UNDER MY SUPERVISION AND THAT THE SAME ARE TRUE AND CORRECT TO THE BEST OF MY KNOWLEDGE AND BELIEF.

REVISED: 04-18-12
REVISED: 04-11-12

REGISTERED LAND SURVEYOR
REGISTRATION NO. 14922
STATE OF COLORADO
04-18-12

UINTAH ENGINEERING & LAND SURVEYING
85 SOUTH 200 EAST - VERNAL, UTAH 84078
(435) 789-1017

SCALE 1" = 1000'
DATE SURVEYED: 03-15-12
DATE DRAWN: 03-23-12

PARTY G.M. T.B. Z.L.
WEATHER WARM
REFERENCES G.L.O. PLAT
FILE AXIA ENERGY

Set Marked Stone,
Cedar Post
Lat: 40.637422°
Long: 107.753436°

S89°46'06"W - 5286.73' (Meas.)

Set Marked Stone,
Steel Post
Lat: 40.637467°
Long: 107.734392°

S00°03'07"W - 2639.70' (Meas.)

Set Marked Stone,
E-W Fence,
Lat: 40.630178°
Long: 107.753453°

ANGLE
POINT

S00°04'10"E -
2640.85' (Meas.)

Set Marked Stone
Lat: 40.622937°
Long: 107.753447°

BULLDOG #20-12H-892
Elev. Ungraded Ground = 6845'

20

NOTE:
THE PROPOSED ANGLE POINT FOR THIS WELL
IS LOCATED IN THE SE 1/4 SE 1/4 OF SECTION
19, T8N, R92W, 6th P.M. AT 791' FSL 763' FEL.
IT BEARS S27°18'19"W 3212.17' FROM THE
PROPOSED WELL HEAD.

NOTE:
SEE ADDENDUM TO LEGAL PLAT FOR
EXISTING IMPROVEMENTS WITHIN 400'
OF THE PROPOSED DISTURBANCE.

N89°46'E - 5289.24' (G.L.O.)

N00°03'W - 5280.00' (G.L.O.)

PDOP = 1.3

NAD 83 (SURFACE LOCATION)	
LATITUDE =	40°37'58.53" (40.632925)
LONGITUDE =	107°45'03.18" (107.750883)
NAD 27 (SURFACE LOCATION)	
LATITUDE =	40°37'58.64" (40.632956)
LONGITUDE =	107°45'00.92" (107.750256)
STATE PLANE NAD 83	
N: 1481345.28	E: 2375326.72
STATE PLANE NAD 27	
N: 481343.85	E: 1375484.64

LEGEND:

- 90° SYMBOL
- PROPOSED WELL HEAD.
- SECTION CORNERS LOCATED.

T8N, R92W, 6th P.M.

AXIA ENERGY

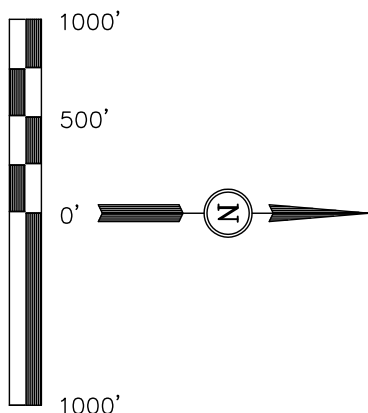
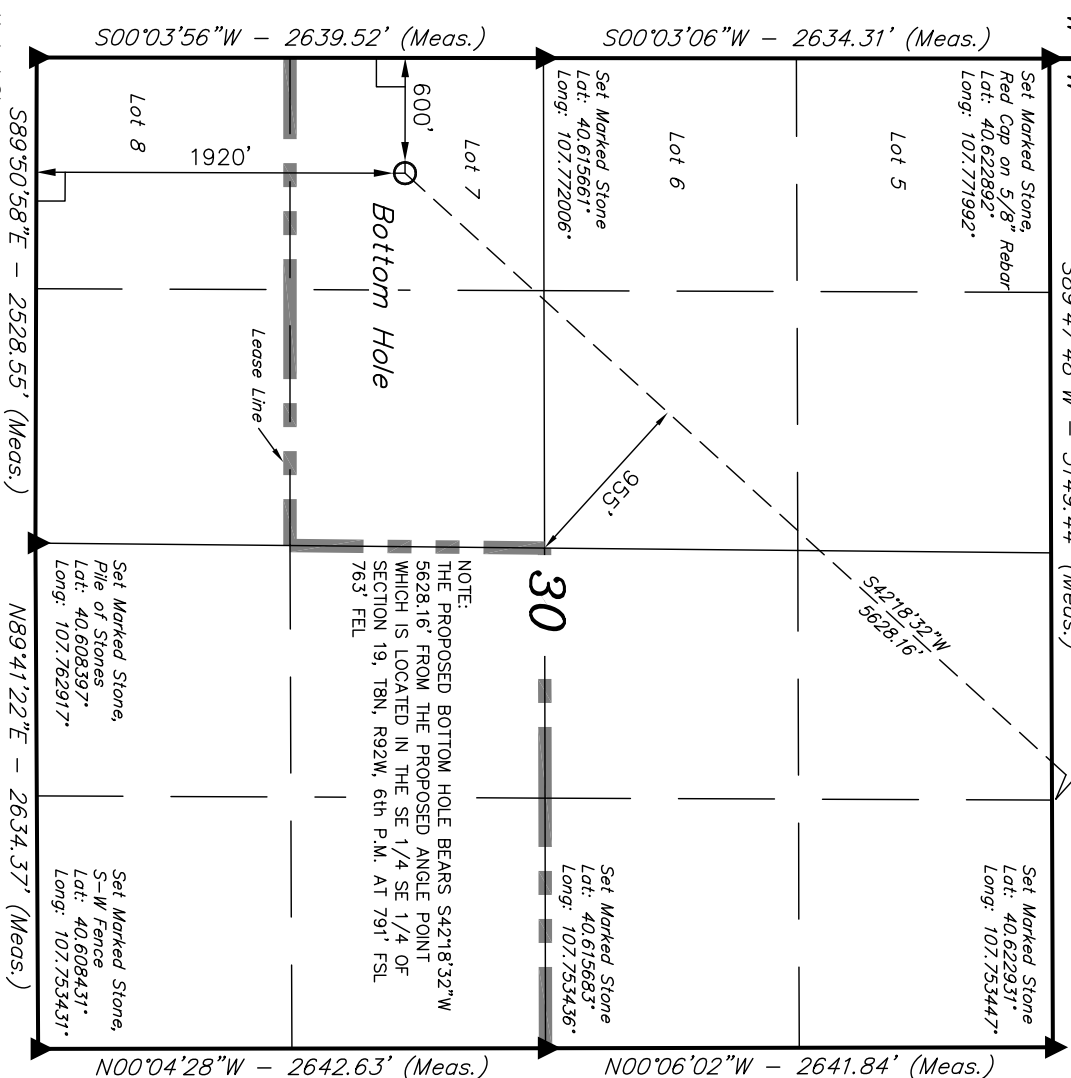
Well location, BULLDOG #20-12H-892, (TARGET BOTTOM HOLE) located as shown in the NW 1/4 SW 1/4 of Section 30, T8N, R92W, 6th P.M., Moffat County, Colorado.

BASIS OF ELEVATION

SPOT ELEVATION LOCATED AT THE NORTHEAST CORNER OF SECTION 10, T6N, R93W, 6th P.M. TAKEN FROM THE HORSE GULCH QUADRANGLE, COLORADO, MOFFAT COUNTY, 7.5 MINUTE QUAD (TOPOGRAPHIC MAP) PUBLISHED BY THE UNITED STATES DEPARTMENT OF THE INTERIOR, GEOLOGICAL SURVEY. SAID ELEVATION IS MARKED AS BEING 6246 FEET.

BASIS OF BEARINGS

BASIS OF BEARINGS IS A C.P.S. OBSERVATION.



THIS IS TO CERTIFY THAT THE ABOVE PLAT WAS PREPARED FROM FIELD NOTES OF ACTUAL SURVEYS MADE BY ME OR UNDER MY SUPERVISION AND THAT THE SAME ARE TRUE AND CORRECT TO THE BEST OF MY KNOWLEDGE AND BELIEF.

REVISED: 04-18-12

REGISTERED LAND SURVEYOR
REGISTRATION NO. 1492
STATE OF COLORADO
04-18-12

UNTAN ENGINEERING & LAND SURVEYING
85 SOUTH 200 EAST - VERNAL, UTAH 84078
(435) 789-1017

NAD 83 (TARGET BOTTOM HOLE)	LATITUDE = 40°36'49.27" (40.613686)
	LONGITUDE = 107°46'11.51" (107.769864)
NAD 27 (TARGET BOTTOM HOLE)	LATITUDE = 40°36'49.38" (40.613717)
	LONGITUDE = 107°46'09.25" (107.769236)
STATE PLANE NAD 83	N: 1474472.79 E: 2369880.92
STATE PLANE NAD 27	N: 474471.39 E: 1370038.89

SCALE	1" = 1000'	DATE SURVEYED:	03-15-12	DATE DRAWN:	03-23-12
PARTY	G.M. T.B. Z.L.	REFERENCES	G.L.O. PLAT		
WEATHER	WARM	FILE	AXIA ENERGY		

- LEGEND:
- └ = 90° SYMBOL
 - = PROPOSED WELL HEAD.
 - ▲ = SECTION CORNERS LOCATED.

T8N, R92W, 6th P.M.

AXIA ENERGY

Well location, BULLDOG #20-12H-892, (ANGLE POINT LOCATION) Located as shown in the SE 1/4 SE 1/4 of Section 19, T8N, R92W, 6th P.M., Moffat County, Colorado.

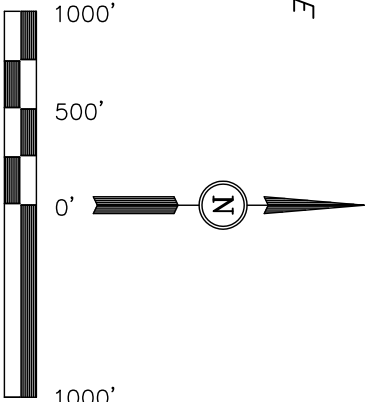
BASIS OF ELEVATION

SPOT ELEVATION LOCATED AT THE NORTHEAST CORNER OF SECTION 10, T6N, R93W, 6th P.M. TAKEN FROM THE HORSE GULCH QUADRANGLE, COLORADO, MOFFAT COUNTY, 7.5 MINUTE QUAD (TOPOGRAPHIC MAP) PUBLISHED BY THE UNITED STATES DEPARTMENT OF THE INTERIOR, GEOLOGICAL SURVEY. SAID ELEVATION IS MARKED AS BEING 6246 FEET.

BASIS OF BEARINGS

BASIS OF BEARINGS IS A C.P.S. OBSERVATION.

BULLDOG BAR NONE
#20-12H-892
Surface Location



CERTIFICATE

THIS IS TO CERTIFY THAT THE ABOVE PLAT WAS PREPARED FROM FIELD NOTES OF ACTUAL SURVEYS MADE BY ME OR UNDER MY SUPERVISION AND THAT THE SAME ARE TRUE AND CORRECT TO THE BEST OF MY KNOWLEDGE AND BELIEF.

REGISTERED LAND SURVEYOR
REGISTRATION NO. 147853-01
STATE OF COLORADO
04-18-12

REVISED: 04-18-12
REVISED: 04-11-12

UINTAH ENGINEERING & LAND SURVEYING
85 SOUTH 200 EAST - VERNAL, UTAH 84078
(435) 789-1017

SCALE 1" = 1000'
DATE SURVEYED: 03-15-12
DATE DRAWN: 03-23-12

PARTY	C.M. T.B. Z.L.	REFERENCES	G.L.O. PLAT
WEATHER	WARM	FILE	AXIA ENERGY

R 93 92
W

Set Marked Stone
Lat: 40.637389°
Long: 107.771972°

Set Marked Stone, Rebar
Lat: 40.637400°
Long: 107.762975°

Set Marked Stone, Cedar Post
Lat: 40.637422°
Long: 107.753436°

S89°47'09"W - 2648.06' (Meas.)

S00°04'56"W - 2640.99' (Meas.)

Lot 6

NOTE:
THE PROPOSED ANGLE POINT BEARS
S27°18'19"W 3212.17' FROM THE PROPOSED
WELL HEAD WHICH IS LOCATED IN THE SW 1/4
NW 1/4 OF SECTION 20, T8N, R92W, 6th P.M.
AT 1641' FNL 712' FWL

Set Marked Stone,
E-W Fence,
Lat: 40.630178°
Long: 107.753453°

Set Marked Stone
Lat: 40.630142°
Long: 107.771989°

Lot 7

Lease Line

S00°04'45"W - 2641.21' (Meas.)

Lot 8

NOTE:
THE PROPOSED ANGLE POINT BEARS S42°18'32"W
5625.16' FROM THE PROPOSED BOTTOM HOLE
WHICH IS LOCATED IN THE NW 1/4 SW 1/4 OF
SECTION 30, T8N, R92W, 6th P.M. AT 1920' FSL
600' FWL

S89°47'48"W - 5149.44' (Meas.)

Set Marked Stone
Lat: 40.622931°
Long: 107.753447°

Set Marked Stone,
Red Cap on 5/8" Rebar
Lat: 40.622892°
Long: 107.771992°

LEGEND:

└ = 90° SYMBOL

● = PROPOSED WELL HEAD.

▲ = SECTION CORNERS LOCATED.

○ Bottom Hole

NAD 83 (ANGLE POINT)

LATITUDE = 40°37'30.36" (40.625100)
LONGITUDE = 107°45'22.37" (107.756214)

NAD 27 (ANGLE POINT)

LATITUDE = 40°37'30.47" (40.625131)
LONGITUDE = 107°45'20.11" (107.755586)

STATE PLANE NAD 83

N: 1478535.01 E: 2373775.16

STATE PLANE NAD 27
N: 478531.60 E: 1373933.10