

LEGEND:

○ PROPOSED LOCATION



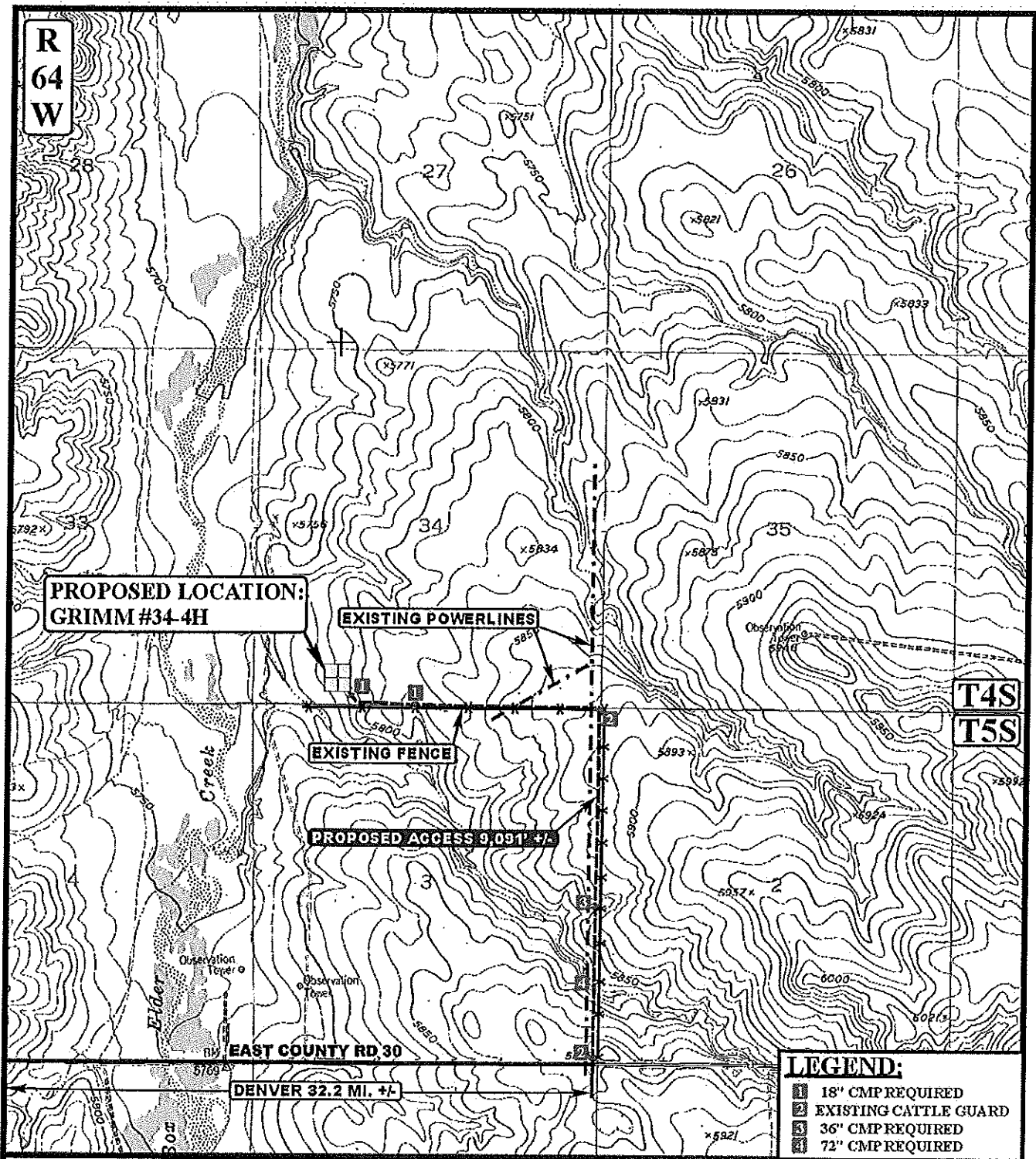
ConocoPhillips Company

GRIMM #34-4H
SECTION 34, T4S, R64W, 6th P.M.
386' FSL 1245' FWL




Utah Engineering & Land Surveying
 85 South 200 East Vernal, Utah 84078
 (435) 789-1017 * FAX (435) 789-1813

ACCESS ROAD		12	02	11	A TOPO
M A P		MONTH	DAY	YEAR	
SCALE: 1:100,000		DRAWN BY: C.I.		REVISED: 03-06-12	



LEGEND:

- EXISTING ROAD
- - - - - PROPOSED ACCESS ROAD
- * * * * * EXISTING FENCE
- EXISTING PIPELINE
- - - - - EXISTING POWERLINE




Utah Engineering & Land Surveying
85 South 200 East Vernal, Utah 84078
(435) 789-1017 * FAX (435) 789-1813



ConocoPhillips Company

GRIMM #34-4H
SECTION 34, T4S, R64W, 6th P.M.
386' FSL 1245' FWL

ACCESS ROAD	12	02	11	
MAP	MONTH	DAY	YEAR	
SCALE: 1" = 2000'		DRAWN BY: C.I.		REVISED: 03-06-12