

T6S, R100W, 6th P.M.

Encana OIL & GAS (USA) INC.

Well location, DHS5B-32 K29 6100 (SURFACE LOCATION), located as shown in the NE 1/4 SW 1/4 of Section 29, T6S, R100W, 6th P.M., Garfield County, Colorado.

BASIS OF ELEVATION

SPOT ELEVATION AT A ROAD INTERSECTION IN THE SW 1/4 SE 1/4 OF SECTION 20, T6S, R100W, 6th P.M. TAKEN FROM THE HENDERSON RIDGE QUADRANGLE, COLORADO, GARFIELD COUNTY, 7.5 MINUTE SERIES (TOPOGRAPHICAL MAP) PUBLISHED BY THE UNITED STATES DEPARTMENT OF THE INTERIOR, GEOLOGICAL SURVEY. SAID ELEVATION IS MARKED AS BEING 5932 FEET.

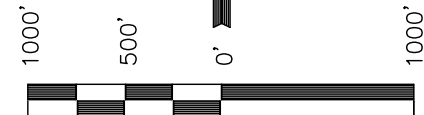
BASIS OF BEARINGS

BASIS OF BEARINGS IS A G.P.S. OBSERVATION.

LINE TABLE

LINE	BEARING	LENGTH
L1	S89°38'25"W	2628.05'
L2	N89°58'30"W	2637.79'
L3	S34°57'26"W	644.38'

Sheet 10 of 11



SCALE

CERTIFICATE

THIS IS TO CERTIFY THAT THE ABOVE PLAT WAS PREPARED AND LOCATION AS SHOWN WAS STAKED ON THE GROUND FROM FIELD NOTES OF ACTUAL SURVEYS MADE BY ME OR UNDER MY SUPERVISION AND THAT THE SAME ARE TRUE AND CORRECT TO THE BEST OF MY KNOWLEDGE AND BELIEF.

REGISTERED LAND SURVEYOR
REGISTRATION NO. 17492
STATE OF COLORADO
02-10-2012

UINTAH ENGINEERING & LAND SURVEYING
85 SOUTH 200 EAST - VERNAL, UTAH 84078
(435) 789-1017

SCALE 1" = 1000'	DATE SURVEYED: 01-25-12	DATE DRAWN: 02-08-12
PARTY B.J. G.M. D.R.B.	REFERENCES G.L.O. PLAT	
WEATHER COLD	FILE Encana OIL & GAS (USA) INC.	

NW Cor Sec 20, 1927
Brass Cap, 1.8' High,
Mound of Stones
Lat: 39.526456°
Long: 108.586731°

COC0013801

Section Corner
Re-Established by
Double Proportion
Method.

COC0011214

LEGEND:

- └─ = 90° SYMBOL
- = PROPOSED WELL HEAD.
- ▲ = SECTION CORNERS LOCATED.
- △ = SECTION CORNERS RE-ESTAB.
(Not Set on Ground)

NOTE:
THE PROPOSED BOTTOM HOLE FOR THIS WELL
IS LOCATED IN TRACT 51 OF SECTION 32,
T6S, R100W, 6th P.M. AT 665' FSL 1966'
FWL. IT BEARS S00°02'25"E 6267.01' FROM
THE START OF PRODUCING INTERVAL.

NOTE:
THE PROPERTY LINE IS LOCATED S89°41'50"E
270.30' FROM THE PROPOSED WELL HEAD.

TRACT 46

Section Corner
Re-Established by
Single Proportion
Method.

COC0010374

COC0009515

1927 Brass Cap
1.2' High
Lat: 39.504803°
Long: 108.568050°

DHS5B-32 K29 6100
Elev. Ungraded Ground = 7032.1'
Elev. Graded Ground = 7033.9'

DHS5B-32 K29 6100
Start of Producing
Interval

N 1/4 Cor Sec 31
1927 Brass Cap
1.1' High
Lat: 39.497433°
Long: 108.596028°

Tract Corner
Re-Established by
Grant Boundary
Method.

LOT 8

COC0010374

LOT 9

Tract Corner
Re-Established by
Grant Boundary
Method.

1927 Brass Cap
1.8' High, Mound
of Stones
Lat: 39.497594°
Long: 108.568042°

NOTE:
SEE SHEET 7A FOR EXISTING
IMPROVEMENTS WITHIN 400' OF THE
PROPOSED WELL DISTURBANCE.

PDOP = 1.8

TRACT 51

NAD 83 (Start of Producing Interval)

LATITUDE = 39°30'06.92" (39.501922)
LONGITUDE = 108°34'46.54" (108.579594)

NAD 27 (Start of Producing Interval)

LATITUDE = 39°30'07.01" (39.501947)
LONGITUDE = 108°34'44.20" (108.578944)

NAD 83 (SURFACE LOCATION)

LATITUDE = 39°30'12.14" (39.503372)
LONGITUDE = 108°34'41.84" (108.578289)

NAD 27 (SURFACE LOCATION)

LATITUDE = 39°30'12.23" (39.503397)
LONGITUDE = 108°34'39.50" (108.577639)

W 1/4 Cor Sec 32
1927 Brass Cap
1.0' High
Lat: 39.490189°
Long: 108.586547°

T6S, R100W, 6th P.M.

Encana OIL & GAS (USA) INC.

Well location, DHS5B-32 K29 6100 (TARGET BOTTOM HOLE), located as shown in Tract 51 of Section 32, T6S, R100W, 6th P.M., Garfield County, Colorado.

BASIS OF ELEVATION

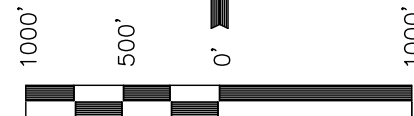
SPOT ELEVATION AT A ROAD INTERSECTION IN THE SW 1/4 SE 1/4 OF SECTION 20, T6S, R100W, 6th P.M. TAKEN FROM THE HENDERSON RIDGE QUADRANGLE, COLORADO, GARFIELD COUNTY, 7.5 MINUTE SERIES (TOPOGRAPHICAL MAP) PUBLISHED BY THE UNITED STATES DEPARTMENT OF THE INTERIOR, GEOLOGICAL SURVEY. SAID ELEVATION IS MARKED AS BEING 5932 FEET.

BASIS OF BEARINGS

BASIS OF BEARINGS IS A G.P.S. OBSERVATION.

NOTE:
SEE SHEET 7A FOR EXISTING IMPROVEMENTS WITHIN 400' OF THE PROPOSED WELL DISTURBANCE.

Sheet 1p of 11



SCALE

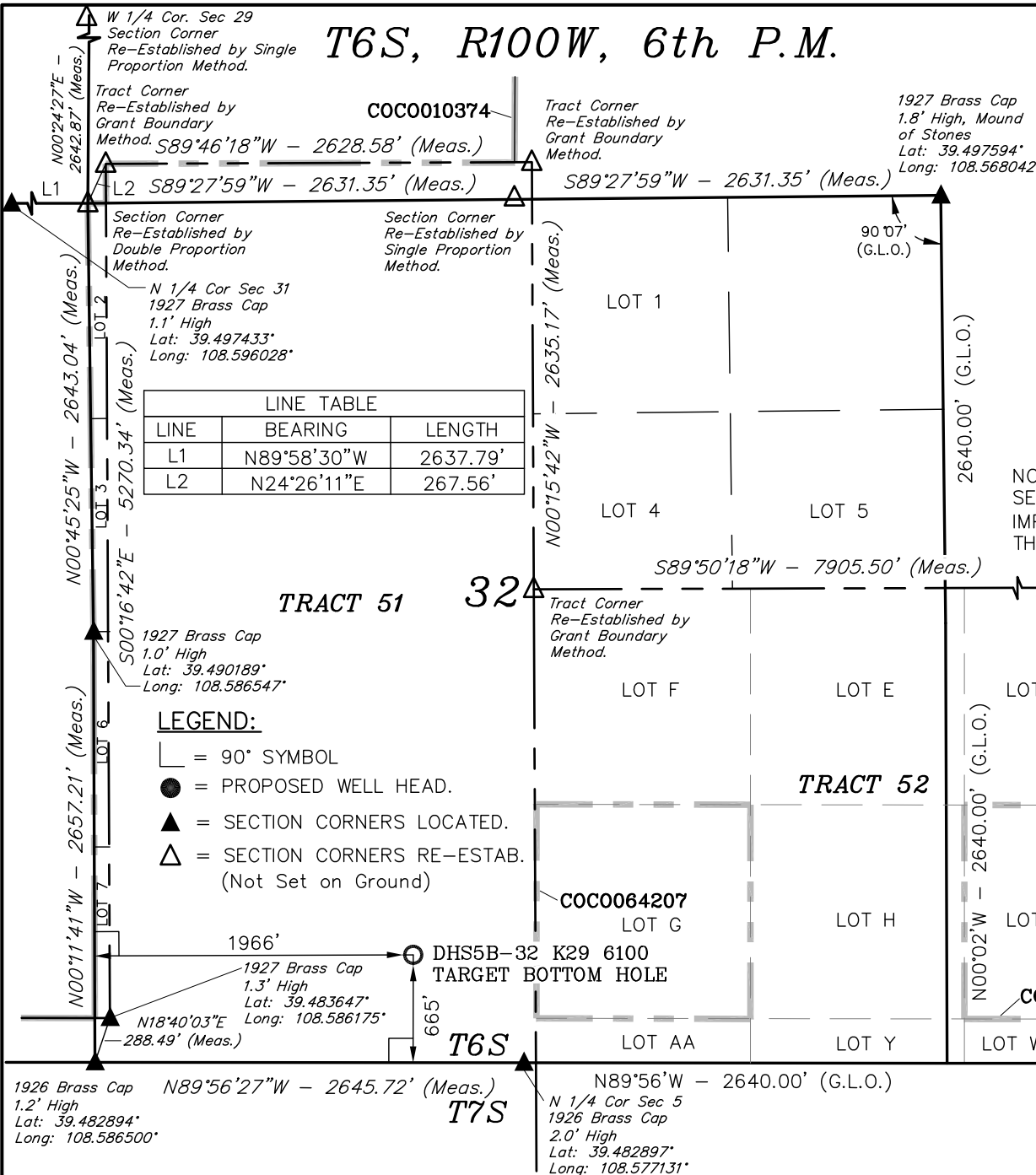
CERTIFICATE

THIS IS TO CERTIFY THAT THE ABOVE PLAT WAS PREPARED AND LOCATION AS SHOWN WAS STAKED ON THE GROUND FROM FIELD NOTES OF ACTUAL SURVEYS MADE BY ME OR UNDER MY SUPERVISION AND THAT THE SAME ARE TRUE AND CORRECT TO THE BEST OF MY KNOWLEDGE AND BELIEF.

REGISTERED LAND SURVEYOR
REGISTRATION NO. 17492
STATE OF COLORADO
02-10-2012

UINTAH ENGINEERING & LAND SURVEYING
85 SOUTH 200 EAST - VERNAL, UTAH 84078
(435) 789-1017

SCALE 1" = 1000'	DATE SURVEYED: 01-25-12	DATE DRAWN: 02-08-12
PARTY B.J. G.M. D.R.B.	REFERENCES G.L.O. PLAT	
WEATHER COLD	FILE Encana OIL & GAS (USA) INC.	



LINE TABLE		
LINE	BEARING	LENGTH
L1	N89°58'30"W	2637.79'
L2	N24°26'11"E	267.56'

LEGEND:

- └─┘ = 90° SYMBOL
- = PROPOSED WELL HEAD.
- ▲ = SECTION CORNERS LOCATED.
- △ = SECTION CORNERS RE-ESTAB. (Not Set on Ground)

NOTE:
THE START OF PRODUCING INTERVAL FOR THIS WELL IS LOCATED IN THE NE 1/4 SW 1/4 OF SECTION 29, T6S, R100W, 6th P.M. AT 1611' FSL 1991' FWL. IT BEARS N00°22'25"W 6267.01' FROM THE PROPOSED BOTTOM HOLE.

NAD 83 (TARGET BOTTOM HOLE)	
LATITUDE	= 39°29'05.00" (39.484722)
LONGITUDE	= 108°34'46.38" (108.579550)
NAD 27 (TARGET BOTTOM HOLE)	
LATITUDE	= 39°29'05.08" (39.484744)
LONGITUDE	= 108°34'44.04" (108.57890)