

T6S, R100W, 6th P.M.

Encana OIL & GAS (USA) INC.

Well location, DHN7B-20 K29 6100 (SURFACE LOCATION), located as shown in the NE 1/4 SW 1/4 of Section 29, T6S, R100W, 6th P.M., Garfield County, Colorado.

BASIS OF ELEVATION

SPOT ELEVATION AT A ROAD INTERSECTION IN THE SW 1/4 SE 1/4 OF SECTION 20, T6S, R100W, 6th P.M. TAKEN FROM THE HENDERSON RIDGE QUADRANGLE, COLORADO, GARFIELD COUNTY, 7.5 MINUTE SERIES (TOPOGRAPHICAL MAP) PUBLISHED BY THE UNITED STATES DEPARTMENT OF THE INTERIOR, GEOLOGICAL SURVEY. SAID ELEVATION IS MARKED AS BEING 5932 FEET.

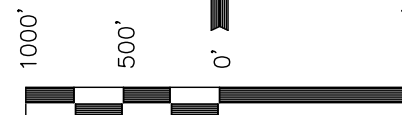
BASIS OF BEARINGS

BASIS OF BEARINGS IS A G.P.S. OBSERVATION.

LINE TABLE

LINE	BEARING	LENGTH
L1	S89°38'25"W	2628.05'
L2	N89°58'30"W	2637.79'

Sheet 1c of 11



SCALE

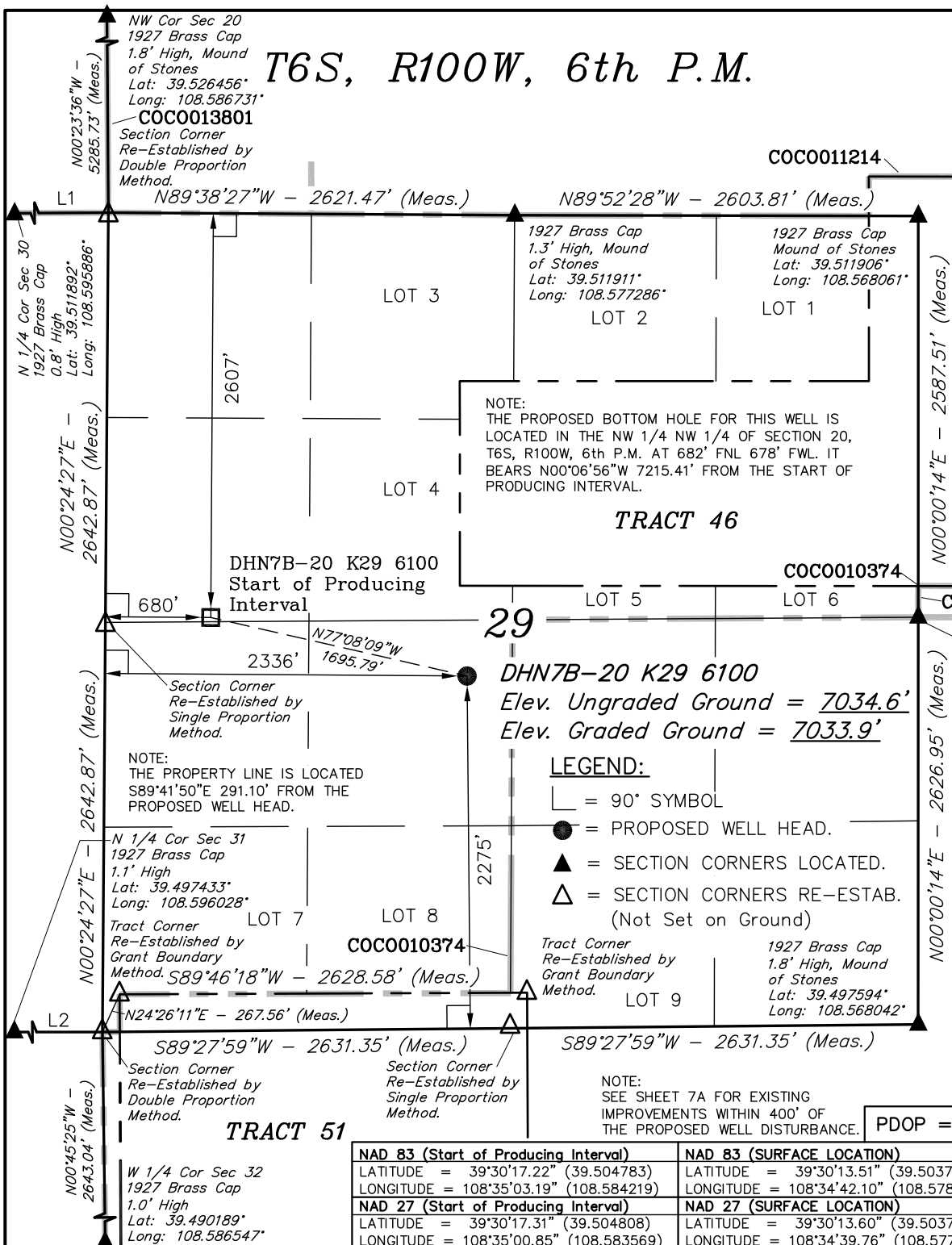
CERTIFICATE

THIS IS TO CERTIFY THAT THE ABOVE PLAT WAS PREPARED AND LOCATION AS SHOWN WAS STAKED ON THE GROUND FROM FIELD NOTES OF ACTUAL SURVEYS MADE BY ME OR UNDER MY SUPERVISION AND THAT THE SAME ARE TRUE AND CORRECT TO THE BEST OF MY KNOWLEDGE AND BELIEF.

REGISTERED LAND SURVEYOR
REGISTRATION NO. 17492
STATE OF COLORADO
02-10-2012

UINTAH ENGINEERING & LAND SURVEYING
85 SOUTH 200 EAST - VERNAL, UTAH 84078
(435) 789-1017

SCALE 1" = 1000'	DATE SURVEYED: 01-25-12	DATE DRAWN: 02-08-12
PARTY B.J. G.M. D.R.B.	REFERENCES G.L.O. PLAT	
WEATHER COLD	FILE Encana OIL & GAS (USA) INC.	



Encana OIL & GAS (USA) INC.

T6S, R100W, 6th P.M.

Well location, DHN7B-20 K29 6100 (TARGET BOTTOM HOLE), located as shown in the NW 1/4 NW 1/4 of Section 20, T6S, R100W, 6th P.M., Garfield County, Colorado.

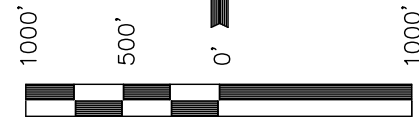
BASIS OF ELEVATION

SPOT ELEVATION AT A ROAD INTERSECTION IN THE SW 1/4 SE 1/4 OF SECTION 20, T6S, R100W, 6th P.M. TAKEN FROM THE HENDERSON RIDGE QUADRANGLE, COLORADO, GARFIELD COUNTY, 7.5 MINUTE SERIES (TOPOGRAPHICAL MAP) PUBLISHED BY THE UNITED STATES DEPARTMENT OF THE INTERIOR, GEOLOGICAL SURVEY. SAID ELEVATION IS MARKED AS BEING 5932 FEET.

BASIS OF BEARINGS

BASIS OF BEARINGS IS A G.P.S. OBSERVATION.

Sheet 1d of 11



SCALE

CERTIFICATE

THIS IS TO CERTIFY THAT THE ABOVE PLAT WAS PREPARED AND LOCATION AS SHOWN WAS STAKED ON THE GROUND FROM FIELD NOTES OF ACTUAL SURVEYS MADE BY ME OR UNDER MY SUPERVISION AND THAT THE SAME ARE TRUE AND CORRECT TO THE BEST OF MY KNOWLEDGE AND BELIEF.

REGISTERED LAND SURVEYOR
REGISTRATION NO. 17492
STATE OF COLORADO
02-10-2012

UINTAH ENGINEERING & LAND SURVEYING
85 SOUTH 200 EAST - VERNAL, UTAH 84078
(435) 789-1017

SCALE 1" = 1000'	DATE SURVEYED: 01-25-12	DATE DRAWN: 02-08-12
PARTY B.J. G.M. D.R.B.	REFERENCES G.L.O. PLAT	
WEATHER COLD	FILE Encana OIL & GAS (USA) INC.	

1927 Brass Cap
1.8' High, Mound
of Stones
Lat: 39.526456°
Long: 108.586731°

COC0013801

1927 Brass Cap
1.5' High
Lat: 39.526417°
Long: 108.568031°

1927 Brass Cap
1.4' High
Lat: 39.526467°
Long: 108.577361°

LOT 2

COC0011214

LOT 1

678'

DHN7B-20 K29 6100
TARGET BOTTOM HOLE

TRACT 39

AP4 Tract Corner
1927 Brass Cap
0.5' High
Lat: 39.521875°
Long: 108.570131°

LOT 4

LOT 5

LOT 6

20

COC0013801

COC0011214

1927 Brass Cap
1.5' High, Mound
of Stones
Lat: 39.519319°
Long: 108.568064°

NOTE:
THE START OF PRODUCING INTERVAL FOR THIS WELL
IS LOCATED IN THE SW 1/4 NW 1/4 OF SECTION
29, T6S, R100W, 6th P.M. AT 2607' FNL 680' FWL.
IT BEARS S00°06'56"E 7215.41' FROM THE
PROPOSED BOTTOM HOLE.

LINE TABLE

LINE	BEARING	LENGTH
L1	S89°38'25"W	2628.05'

LOT 7

1927 Brass Cap
1.3' High, Mound
of Stones
Lat: 39.511911°
Long: 108.577286°

COC0010374

Section Corner
Re-Established by
Double Proportion
Method.

N 1/4 Cor Sec 30
1927 Brass Cap
0.8' High
Lat: 39.511892°
Long: 108.595886°

W 1/4 Cor Sec 29
Section Corner
Re-Established by
Single Proportion
Method.

LEGEND:

- └─ = 90° SYMBOL
- = PROPOSED WELL HEAD.
- ▲ = SECTION CORNERS LOCATED.
- △ = SECTION CORNERS RE-ESTAB.
(Not Set on Ground)

NAD 83 (TARGET BOTTOM HOLE)
LATITUDE = 39°31'28.51" (39.524586)
LONGITUDE = 108°35'03.50" (108.584306)
NAD 27 (TARGET BOTTOM HOLE)
LATITUDE = 39°31'28.60" (39.524611)
LONGITUDE = 108°35'01.16" (108.583656)