

PROPOSED WELLBORE SPACING DESCRIPTION

T6N, R67W, 6th P.M.

R 67
R 66

GREAT WESTERN OIL & GAS COMPANY

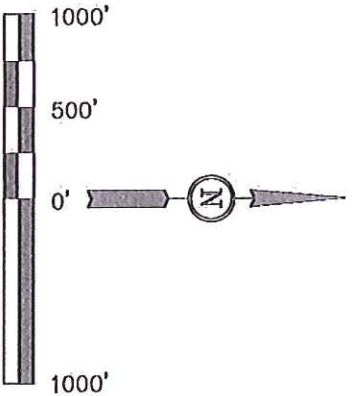
Well location, HCW FD #24-20D, located as shown in the SE 1/4 SW 1/4 of Section 24, T6N, R67W, 6th P.M., Weld County, Colorado.

BASIS OF ELEVATION

USGS COOPERATIVE BASE NETWORK CONTROL STATION, DESIGNATION 'VERMILYEA'. NGS DATA SHEET LISTS THE NAVD 88 ELEVATION AS BEING 5026 FEET

BASIS OF BEARINGS

BASIS OF BEARINGS IS A G.P.S. OBSERVATION.



CERTIFICATE

THIS IS TO CERTIFY THAT THE ABOVE PLAT WAS PREPARED FROM FIELD NOTES OF ACTUAL SURVEYS MADE BY ME OR UNDER MY SUPERVISION AND THAT THE SAME ARE TRUE AND CORRECT TO THE BEST OF MY KNOWLEDGE AND BELIEF.

REGISTERED AND SURVEYOR
STATE OF COLORADO
PLS #7242
DATE 04-20-12

UTIAH ENGINEERING & LAND SURVEYING

85 SOUTH 200 EAST - VERNAL, UTAH 84078
(435) 789-1017

SCALE 1" = 1000'

PARTY D.N. G.W. T.B.

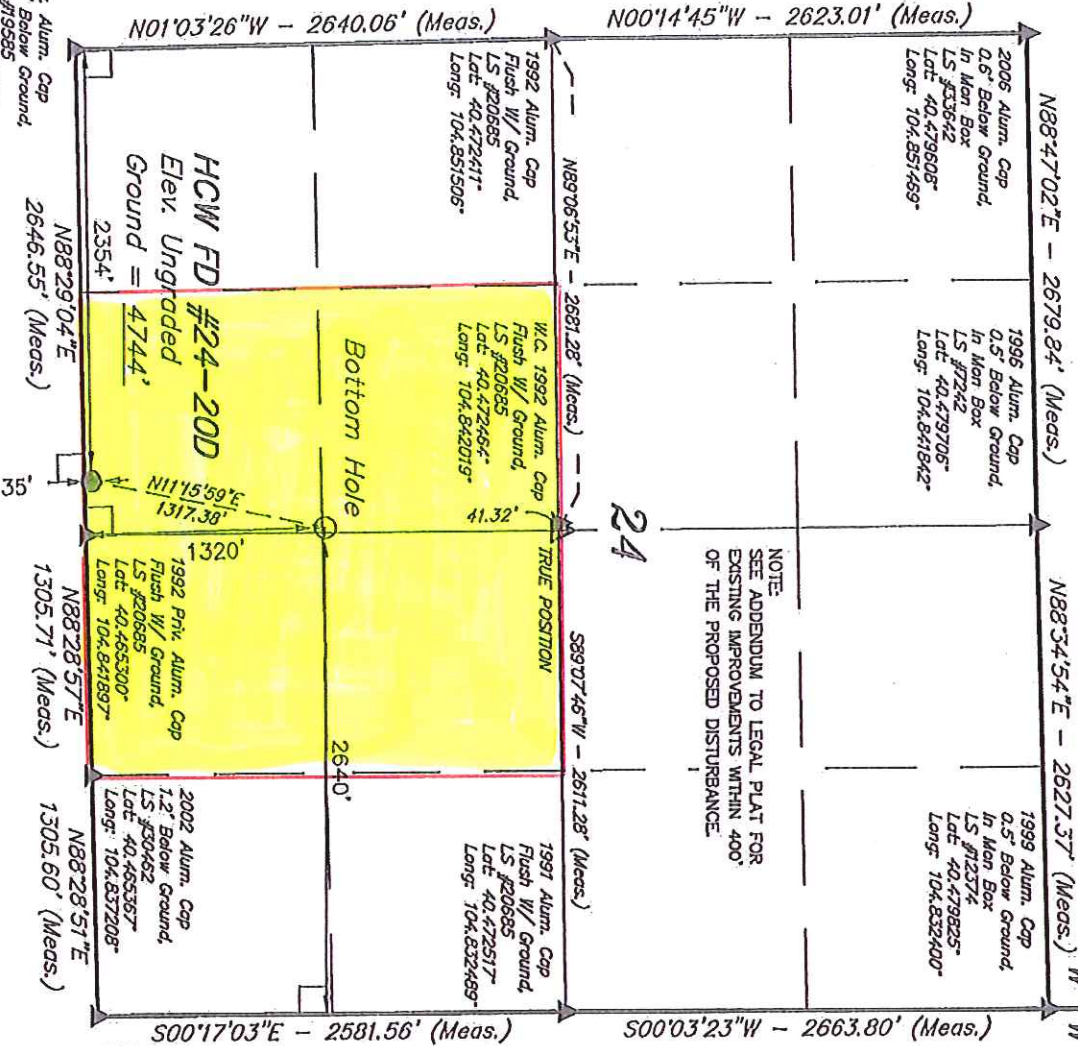
WEATHER COLD

FILE GREAT WESTERN OIL & GAS COMPANY

NAD 83 (TARGET BOTTOM HOLE)		NAD 83 (SURFACE LOCATION)	
LATITUDE = 40°28'08.12" (40.468922)		LATITUDE = 40°27'55.38" (40.465383)	
LONGITUDE = 104°50'31.16" (104.841989)		LONGITUDE = 104°50'34.67" (104.842950)	
NAD 27 (TARGET BOTTOM HOLE)		NAD 27 (SURFACE LOCATION)	
LATITUDE = 40°28'08.19" (40.468942)		LATITUDE = 40°27'55.45" (40.465403)	
LONGITUDE = 104°50'29.27" (104.841464)		LONGITUDE = 104°50'32.73" (104.842425)	

PDOP = 1.6

NOTE:
SEE APPENDUM TO LEGAL PLAT FOR
EXISTING IMPROVEMENTS WITHIN 400'
OF THE PROPOSED DISTURBANCE.



LEGEND:

- = 90° SYMBOL
- = PROPOSED WELL HEAD.
- ▲ = SECTION CORNERS LOCATED.