

T6N, R67W, 6th P.M.

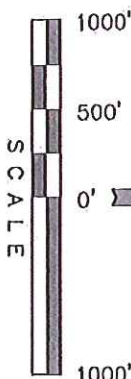
R	R
67	66

Well location, HCW FD #24-36D, located as shown in the SE 1/4 SW 1/4 of Section 24, T6N, R67W, 6th P.M., Weld County, Colorado.

USGS COOPERATIVE BASE NETWORK CONTROL STATION,  
DESIGNATION "VERMILYEA". NGS DATA SHEET LISTS THE  
NAVD 88 ELEVATION AS BEING 5026 FEET

BASIS OF BEARINGS IS A G.P.S. OBSERVATION.

LINE TABLE		
LINE	DIRECTION	LENGTH
L1	S85.2513"E	236.15'



**CERTIFICATE**

THIS IS TO CERTIFY THAT THE ABOVE PLAT WAS PREPARED FROM FIELD NOTES OF ACTUAL SURVEYS MADE BY ME OR UNDER MY SUPERVISION AND THAT THE SAME ARE TRUE AND CORRECT TO THE BEST OF MY KNOWLEDGE AND BELIEF.

REGISTERED LAND SURVEYOR  
REGISTRATION NO. 17492  
STATE OF COLORADO  
03-22-12

**UNTAH ENGINEERING & LAND SURVEYING**

85 SOUTH 200 EAST - VERNAL, UTAH 84078  
(435) 789-1017

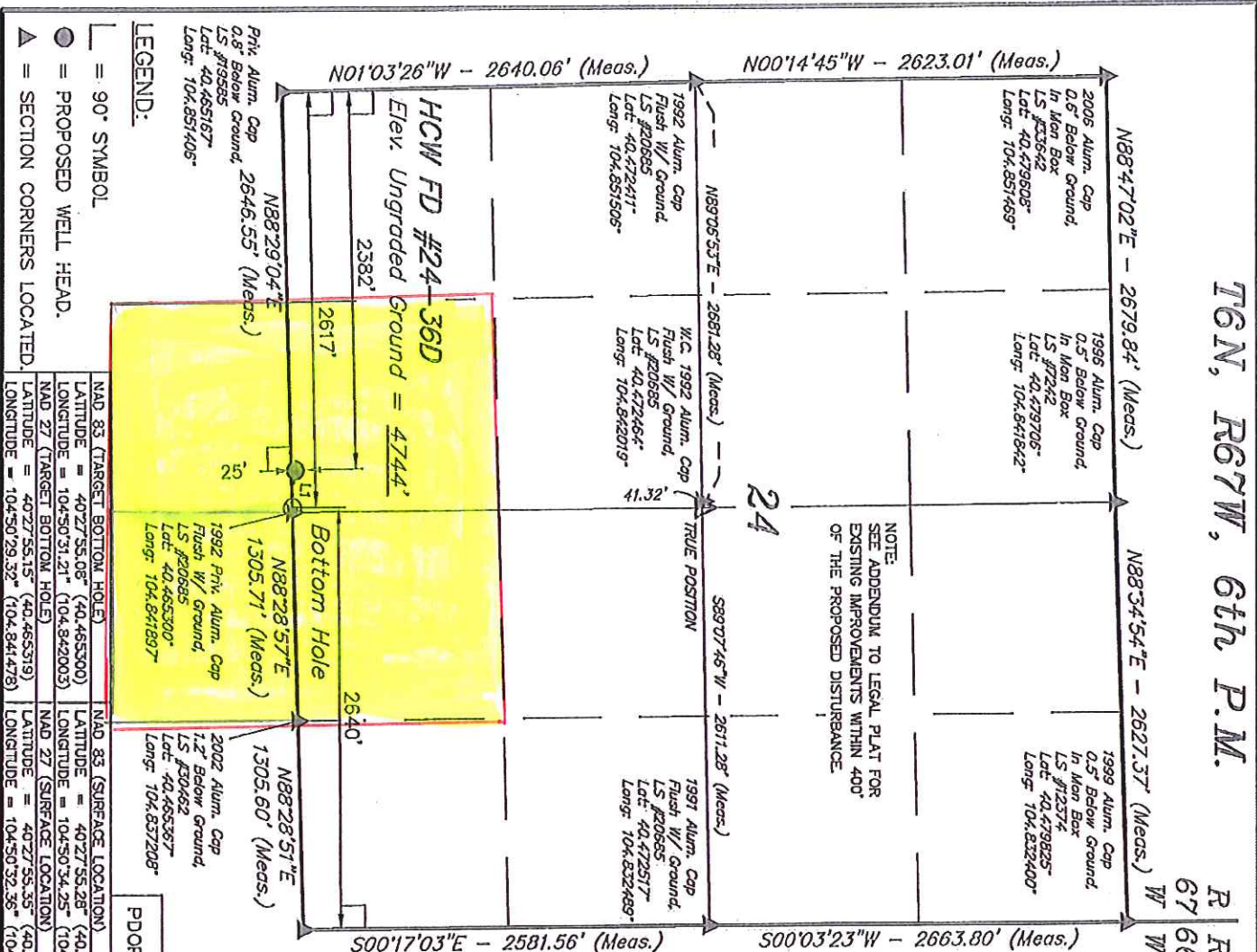
DATE SURVEYED: 02-20-12	DATE DRAWN: 03-15-12
----------------------------	-------------------------

PARTY	REFERENCES
D.N. G.W. T.B.	G.L.O. PLATT

**COLD**

---

**GREAT WESTERN OIL & GAS COMPANY**



NOTE: SEE ADDENDUM TO LEGAL PLAY FOR EXISTING IMPROVEMENTS WITHIN 400' OF THE PROPOSED DISTURBANCE.

HCW FD #24-36D  
Elev. Ungraded Ground = 4744'

N01°03'26"W - 2640.06' (Meas.)

*N00°14'45"W - 2623.01' (Meas.)*

N88°47'02"E - 2679.84' (Meas.)

N88°34'54"E - 2627.37' (Meas.)

2006 Alum. Corp  
0.6' Below Ground,  
In Man Box  
LS #33642  
Lot: 40.479608.  
Long: 104.851469

1936 Alum. Cap  
0.5" Below Ground,  
In Man Box  
LS #J7242  
Lat: 40.479706-  
Long: 104.841842

1999 Alum. Cop  
0.5' Below Ground,  
In Man Box  
LS #12574  
Lot 40.479825-  
Long 104.832400

24

$289^{\circ}07'46''W - 2617.28'$  (Meas.,

Flush W/ Ground.  
LS #20685  
Lot: 40.472417-  
Long: 104.851506-

Flush W/ Ground,  
LS #20685  
Lot: 40.472464°  
Long: 104.842019°

1991 Alum. Cap  
Flush W/ Ground,  
LS #20685  
Lot: 40.472517  
Long: 104.832489

S00°17'03"E - 2581.56' (Meas.)

1996 Priv. Alum. Copp  
1.0' Below Ground,  
PLS #17242  
Lat 40.465435  
Long: 104.832517

N88°29'04"E  
646.55' (Meas.)

1505.71' (Meas.)

N88°28.51'E  
1305.60' (Meas.)

Priv. Alum. Cap  
0.8" Below Ground,  
LS #179585  
Lat: 40.465167°  
Long: 104.851405°

**LEGEND:**

or

WELL HEAD.

CORNERS LOCATED