

HALLIBURTON

Cementing Job Summary

The Road to Excellence Starts with Safety

Sold To #: 303209	Ship To #: 2901541	Quote #:	Sales Order #: 9389560
Customer: K P KAUFFMAN CO, INC. EBIZ		Customer Rep: RAMOS, RICH	
Well Name: Josephine B Miles	Well #: #4	API/UWI #:	
Field: SPINDLE	City (SAP): FREDERICK	County/Parish: Weld	State: Colorado
Lat: N 40.097 deg. OR N 40 deg. 5 min. 48.145 secs.		Long: W 105.015 deg. OR W -106 deg. 59 min. 4.69 secs.	
Job Purpose: Squeeze Hole in Casing			
Well Type: Producing Well		Job Type: Squeeze Hole in Casing	
Sales Person: FLING, MATTHEW		Srv Supervisor: SNYDER, JONATHAN	MBU ID Emp #: 435616

Job Personnel

HES Emp Name	Exp Hrs	Emp #	HES Emp Name	Exp Hrs	Emp #	HES Emp Name	Exp Hrs	Emp #
BARTOSEK, KEVIN	4.5	516167	BOETTIGER, MARK	4.5	500519	HINKLE, BRADLEY	4.5	512123
SNYDER, JONATHAN Leroy	4.5	435616	WILEY, JAMES A	4.5	440080	Dean		

Equipment

HES Unit #	Distance-1 way	HES Unit #	Distance-1 way	HES Unit #	Distance-1 way	HES Unit #	Distance-1 way
10248062C	18 mile	10679720C	18 mile	10988836C	18 mile	11362287C	18 mile
11518548	18 mile						

Job Hours

Date	On Location Hours	Operating Hours	Date	On Location Hours	Operating Hours	Date	On Location Hours	Operating Hours
TOTAL			Total is the sum of each column separately					

Job

Formation Name	Formation Depth (MD) Top	Bottom	Called Out	Date	Time	Time Zone
Form Type		BHST	On Location	27 - Mar - 2012	10:30	MST
Job depth MD	3051. ft	Job Depth TVD	Job Started	27 - Mar - 2012	12:09	MST
Water Depth		Wk Ht Above Floor	Job Completed	27 - Mar - 2012	14:02	MST
Perforation Depth (MD) From		To	Departed Loc	27 - Mar - 2012	15:00	MST

Well Data

Description	New / Used	Max pressure psig	Size in	ID in	Weight lbm/ft	Thread	Grade	Top MD ft	Bottom MD ft	Top TVD ft	Bottom TVD ft
Casing	Used		4.5	4.	11.6				3051.		
Surface Casing	Unknown		8.625	8.097	24.				211.		
Tubing	Unknown		2.375	1.995	4.6				3051.		

Tools and Accessories

Type	Size	Qty	Make	Depth	Type	Size	Qty	Make	Depth	Type	Size	Qty	Make
Guide Shoe					Packer					Top Plug			
Float Shoe					Bridge Plug					Bottom Plug			
Float Collar					Retainer					SSR plug set			
Insert Float										Plug Container			
Stage Tool										Centralizers			

Miscellaneous Materials

Gelling Agt	Conc	Surfactant	Conc	Acid Type	Qty	Conc	%
Treatment Fld	Conc	Inhibitor	Conc	Sand Type	Size	Qty	%

Fluid Data

Stage/Plug #	1
--------------	---

HALLIBURTON

Cementing Job Summary

Fluid #	Stage Type	Fluid Name	Qty	Qty uom	Mixing Density lbm/gal	Yield ft ³ /sk	Mix Fluid Gal/sk	Rate bbl/min	Total Mix Fluid Gal/sk
1	Prem G 15.8#	CMT - PREMIUM - CLASS G, 94 LB SK (100003685)	400.0	sacks	15.8	1.15	5.0	4.0	5.0
	94 lbm	CMT - PREMIUM - CLASS G REG OR TYPE V, BULK (100003685)							
	5 Gal	FRESH WATER							
Calculated Values			Pressures			Volumes			
Displacement		Shut In: Instant		Lost Returns		Cement Slurry		Pad	
Top Of Cement		5 Min		Cement Returns		Actual Displacement		Treatment	
Frac Gradient		15 Min		Spacers		Load and Breakdown		Total Job	
Rates									
Circulating		Mixing		Displacement		Avg. Job			
Cement Left In Pipe	Amount	0 ft	Reason	Shoe Joint					
Frac Ring # 1 @	ID	Frac ring # 2 @	ID	Frac Ring # 3 @	ID	Frac Ring # 4 @	ID		
The Information Stated Herein Is Correct				Customer Representative Signature					

HALLIBURTON

Cementing Job Log

The Road to Excellence Starts with Safety

Sold To #: 303209		Ship To #: 2901541		Quote #:		Sales Order #: 9389560	
Customer: K P KAUFFMAN CO, INC. EBIZ				Customer Rep: RAMOS, RICH			
Well Name: Josephine B Miles			Well #: #4		API/UWI #:		
Field: SPINDLE		City (SAP): FREDERICK		County/Parish: Weld		State: Colorado	
Legal Description:							
Lat: N 40.097 deg. OR N 40 deg. 5 min. 48.145 secs.				Long: W 105.015 deg. OR W -106 deg. 59 min. 4.69 secs.			
Contractor:			Rig/Platform Name/Num:				
Job Purpose: Squeeze Hole in Casing						Ticket Amount:	
Well Type: Producing Well			Job Type: Squeeze Hole in Casing				
Sales Person: FLING, MATTHEW			Srvc Supervisor: SNYDER, JONATHAN		MBU ID Emp #: 435616		

Activity Description	Date/Time	Chr #	Rate bbl/ min	Volume bbl		Pressure psig		Comments
				Stage	Total	Tubing	Casing	
Arrive at Location from Service Center	03/27/2012 14:18							ARRIVED AND CONDUCTED A HAZARD HUNT AND FOUND NO HAZARDS THAT CONFLICT WITH US RIGGING UP EQUIPMENT.
Pre-Job Safety Meeting	03/27/2012 14:18							HELD SAFETY MEETING WITH ALL EMPLOYEES AND ALL THIRD PARTY PERSONEL PRIOR TO PUMPING THE CEMENT JOB.
Start Job	03/27/2012 14:18							
Test Lines	03/27/2012 14:18							PRESSURE TEST LINES TO 3779 PSI
Pump Cement	03/27/2012 14:18		3	82			40.0	400 SKS VARICEM B1 MIXED @ 12 PPG W/ RIG WATER
Pump Displacement	03/27/2012 14:18		1	0.5			275.0	W/ RIG WATER
Shutdown	03/27/2012 14:18							SHUTDOWN WHILE RIG CREW PUT MORE TUBING IN THE HOLE.
Reverse Circ Well	03/27/2012 14:18		1.5	40			485.0	HOOKEED UP TO THE BACKSIDE AND REVERSE CIRCULATED THE WELL TO CLEAN THE CEMENT OUT.
End Job	03/27/2012 14:18							RIG WATER MIXED W/ CLAYFIX III
Activity Description	Date/Time	Chr	Rate bbl/ min	Volume bbl		Pressure psig		Comments

Sold To #: 303209 Ship To #: 2901541 Quote #: Sales Order #: 9389560
 SUMMIT Version: 7.3.0021 Tuesday, March 27, 2012 02:27:00

HALLIBURTON

Cementing Job Log

		#		Stage	Total	Tubing	Casing	
Pre-Rig Down Safety Meeting	03/27/2012 14:18							HELD SAFETY MEETING WITH ALL EMPLOYEES PRIOR TO RIGGING DOWN AND DISCUSSED ALL HAZARDS WHILE RIGGING DOWN EQUIPMENT.
Depart Location for Service Center or Other Site	03/27/2012 14:18							HELD SAFETY MEETING PRIOR TO LEAVING LOCATION AND DISCUSSED ALL POTENTIAL HAZARDS WHILE DRIVING BACK TO THE SERVICE CENTER.

Sold To #: 303209

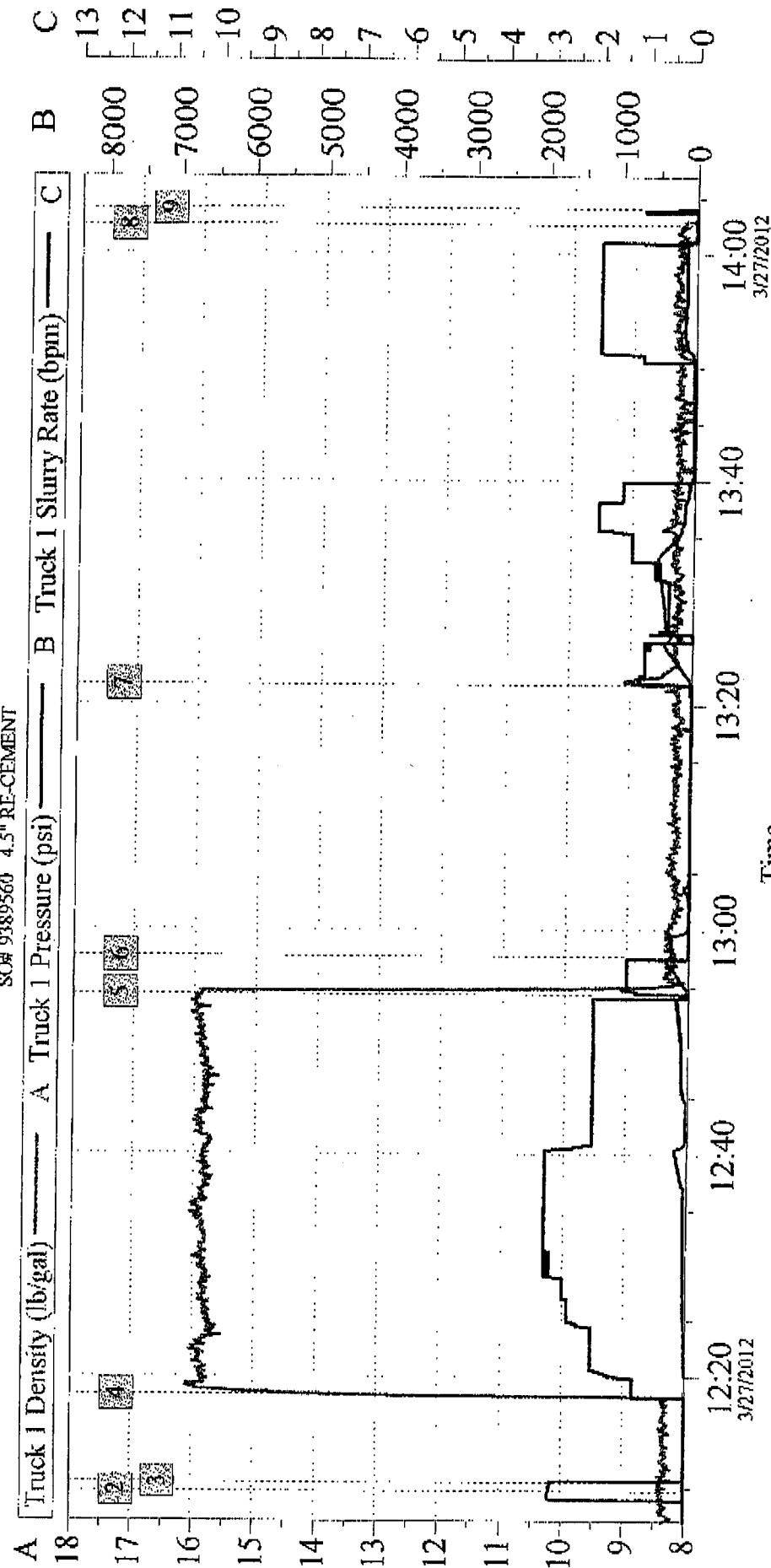
Ship To #: 2901541

Quote #:

Sales Order #: 9389560

SUMMIT Version: 7.3.0021

Tuesday, March 27, 2012 02:27:00



Global Event Log									
Intersection		TID	TIP	Intersection		TID	TIP		
1	Starting Job	11:22:45	8.280	-5.000	2	Start Job	12:09:42	8.386	1848
3	Test Lines	12:10:30	8.401	1826	4	Pump Cement	12:18:24	12.47	-2.000
5	Pump Displacement	12:54:20	15.88	24.37	6	Shutdown	12:57:41	8.277	250.6
7	Reverse Circ Well	13:21:47	8.232	21.00	8	End Job	14:02:33	8.183	12.00
9	Ending Job	14:04:00	3.360	4.000					

Customer: KPK	Job Date: 27-Mar-2012	Sales Order #: 9389560
Well Description: JOSEPHINE B MILES #4	UWI: 05-123-10441-00	
SERVICE SUPERVISOR JONATHAN SNYDER	SERVICE OPERATOR JAMES WILLEY	