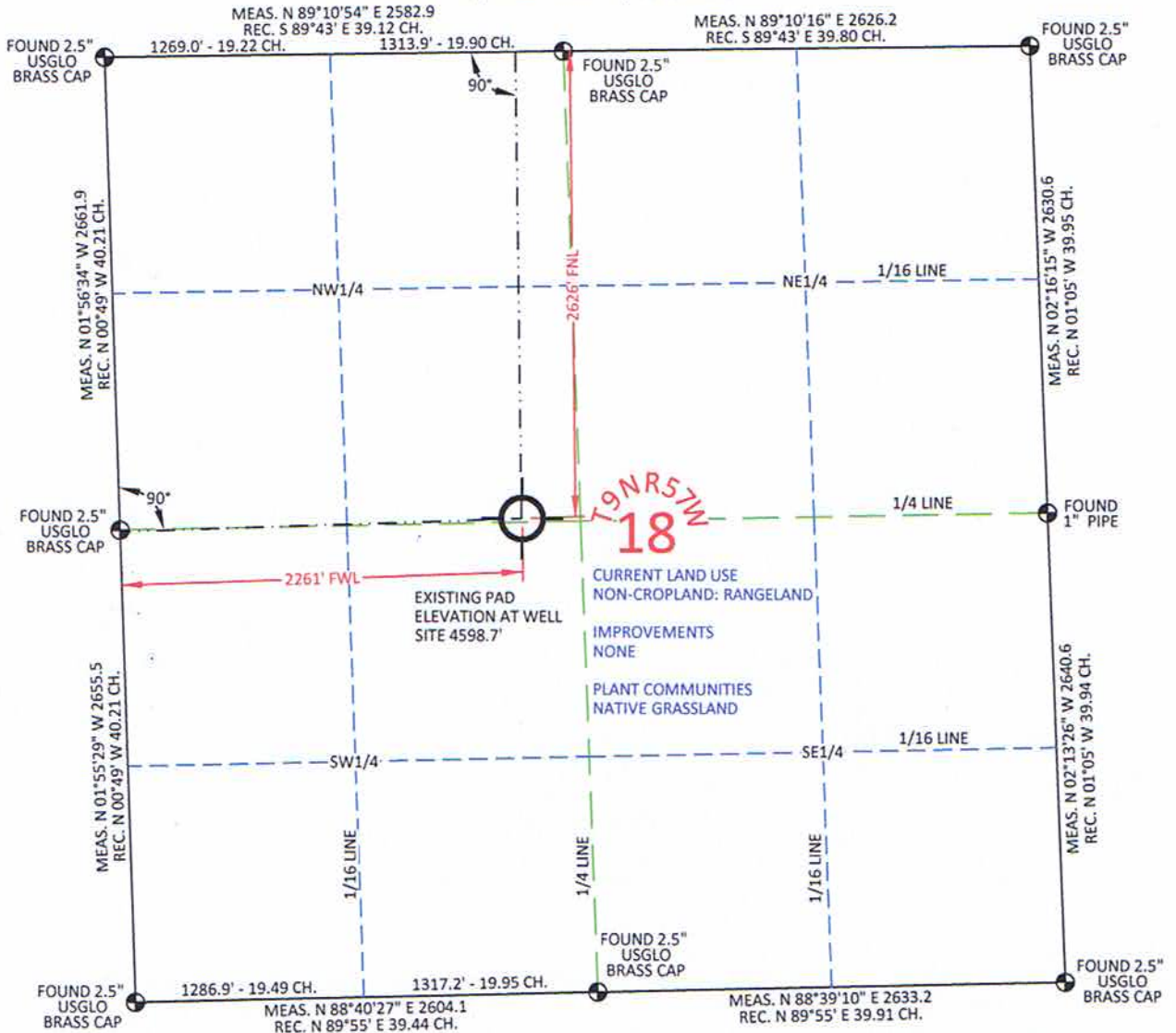


**MARATHON OIL CO. PAWNEE CREEK 9-57-18-1M AS-DRILLED MONITORING WELL PLAT**  
 LOCATED WITHIN THE SE1/4 NW1/4 SECTION 18 T9N R57W  
 OF THE 6TH P.M., WELD COUNTY, COLORADO



**MONITOR WELL  
(AS-DRILLED)**

GEOGRAPHIC DEC. MIN. SEC.	DEC. DEG.	LAT.	40.751642°
		LONG.	103.794497°
		LAT.	40.751656°
		LONG.	103.793994°
CO. NORTH	NAD 83	LAT.	40°45'05.91"
		LONG.	103°47'40.19"
		LAT.	40°45'05.96"
		LONG.	103°47'38.38"
STATE PLAT	CO. NORTH	NORTH	1521212.40
		EAST	3472507.13
		NORTH	521211.02
		EAST	2472659.01

FOOTAGE: 2261' FWL - 2626' FNL

PAD ELEV. 4598.7'

INST. OPTR. ALLEN BLATTEL

MEASURE DATE: 11/19/2011

PDOP: 2.5

I, Rodney A. Walters, Professional Land Surveyor, CO. LS #16847 hereby certify that (in accordance with a request from Erin Bibeau with Marathon Oil Co, 5555 San Felipe, Houston, TX 77056) I and or personnel under my direction made a survey on the 11th day of November 2011, for the Monitoring Well Location and Elevation of Marathon Oil Co. Pawnee Creek 9-57-18-1M being located within the SE1/4 NW1/4 Section 18, T9N R57W, of the 6th P.M., Weld County, State of Colorado.

- All bearings and distances are **GRID** based on the Colorado State Plane Coordinate System, North Zone, North American Datum 1983 from GPS observations occupying a WHS control point (5/8" rebar) and having the Location and Elevation derived from an Opus Solution.
- Vertical Datum used is of NAVD 88.
- Record Bearings and Distances as shown are based on the General Land Office Survey plat approved on the 18th day of September 1918.

**CONFIDENTIALITY NOTES:**

The information contained in this plot is legally privileged and confidential information intended only for the use of the recipients. If you are not the intended recipients, you are hereby notified that any use, dissemination, distribution or copying of this information is strictly prohibited.



**WILLIAM H. SMITH  
& ASSOCIATES P.C.**

SURVEYING CONSULTANTS  
 350 EAST SECOND NORTH PHONE: 307-875-3638  
 GREEN RIVER, WY 307-875-3639  
 www.wsmithpc.com

DRAWN BY: LAL

CHECKED BY: RAW

PROJECT NO: 957181M

JOB NO: 2011001

REVISIONS:

**LEGEND**

- FOUND CORNER
- ⊗ CALCULATED CORNER
- NOTHING FOUND

**LOCATION:**

PAWNEE CREEK  
 9-57-18-1M  
 WITHIN THE SE/4  
 NW/4 SECTION 18,  
 T 9 N, R 57 W,  
 6TH P.M.  
 WELD COUNTY,  
 COLORADO

**MARATHON OIL COMPANY**

PO BOX 3128, HOUSTON TX, 77253  
 5555 SAN FELIPE, HOUSTON TX, 77056

**AS-DRILLED**

**MONITORING WELL PLAT**

SCALE: 1"=1000'

EXHIBIT "A"

DATE: 04/09/2012

SHEET 1 OF 1