

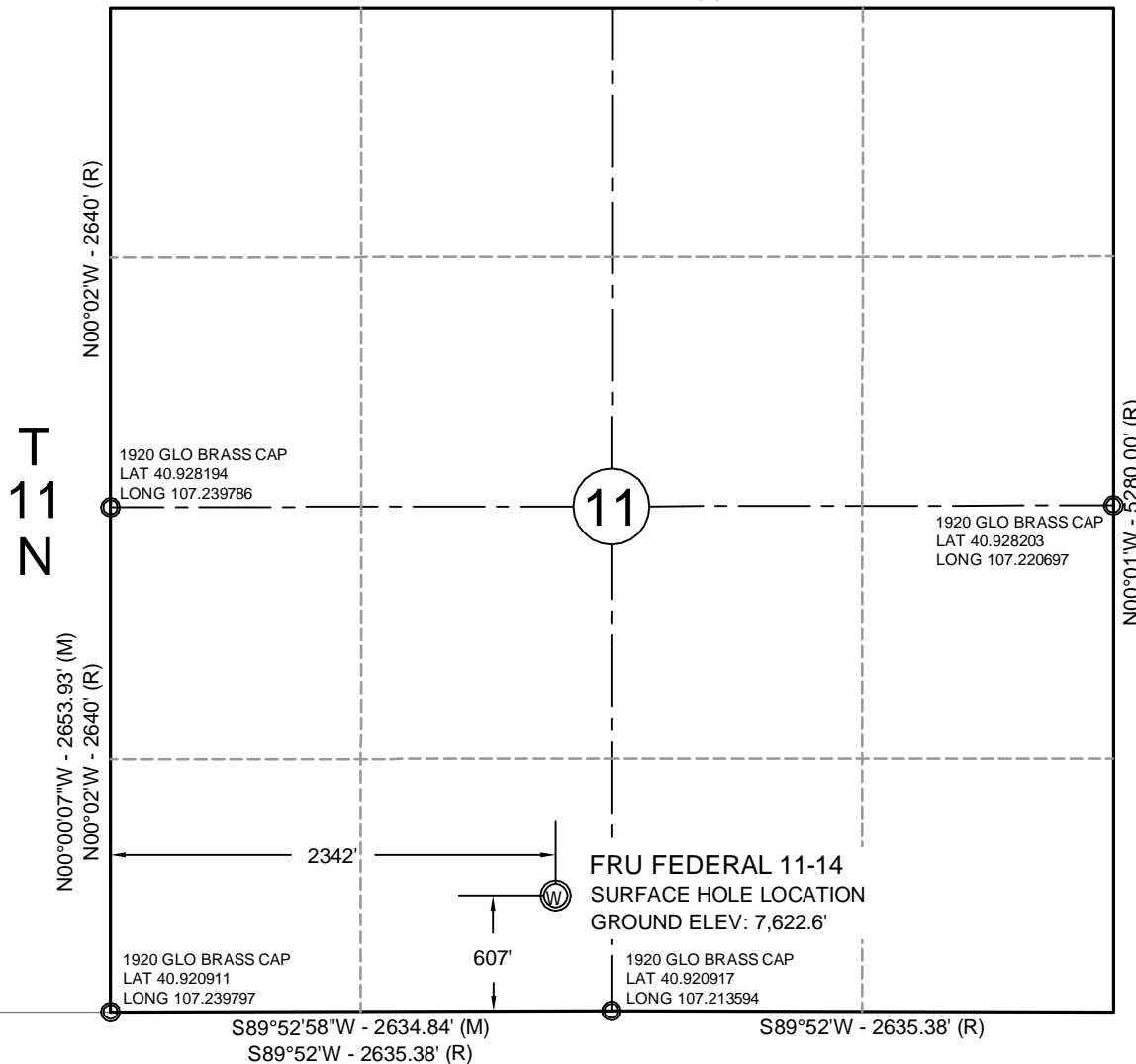
R88W

S89°58'W - 5277.36' (R)

NAD83

LAT 40°55'21.3"
(40.922583)
LONG 107°13'52.7"
(107.231317)

STATE PLANE (CO-N)
N=1,583,620 ft
E=2,521,558 ft



NOTES:

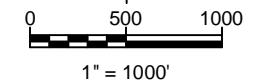
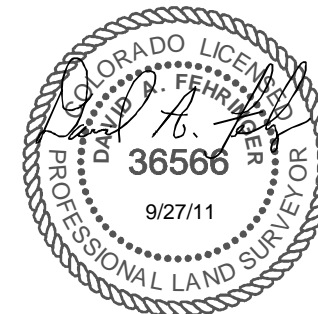
1. ● INDICATES FOUND MONUMENT AS DESCRIBED
2. ELEVATIONS BASED ON AN OPUS SOLUTION
3. THE BASIS OF BEARING IS NAD83 COLORADO NORTH DERIVED FROM POST-PROCESSED STATIC GPS OBSERVATIONS.
4. PDOP VALUE EQUALS 2.6.
5. GPS OPERATOR: DAVE FEHRINGER.

REFERENCE STAKES:

- 200' SOUTH - NA
- 200' NORTH - NA
- 200' WEST - NA
- 200' WEST - NA

CERTIFICATE OF SURVEYOR

I, David A. Fehringer of Lander, Wyoming hereby certify that this map was made from notes taken during an actual survey made on SEPTEMBER 9, 2011, and that it correctly shows the drilling location of ENTEK GRB, LLC., FRU FEDERAL 11-14 as staked during said survey.



ENTEK GRB, LLC

FRU FEDERAL 11-14
WELL LOCATION CERTIFICATE
607' FSL, 2342' FWL
SE¼SW¼, SECTION 11,
T.11N., R.88W., 6th PM
ROUTT COUNTY, COLORADO

CHOICE ENGINEERING SERVICES

404 "N" Street - Suite 201 | Rock Springs, WY 82901
Phone 307-362-6065 | Fax 307-362-6064

Scale: 1"=1000' | Date: 09/27/11
REVISION # 2 - NAME CHANGE
DF - 4/10/12

SHEET NO:

1