
WILLIAMS PRODUCTION RMT INC - EBUS

**PA 532-7
Parachute
Garfield County , Colorado**

Cement Surface Casing
04-Aug-2011

Post Job Summary

The Road to Excellence Starts with Safety

Sold To #: 300721	Ship To #: 2867018	Quote #:	Sales Order #: 8335120
Customer: WILLIAMS PRODUCTION RMT INC - EBUS	Customer Rep: Towers, Ron		
Well Name: PA	Well #: 532-7	API/UWI #: 05-045-20163	
Field: Parachute	City (SAP): PARACHUTE	County/Parish: Garfield	State: Colorado
Lat: N 39.456 deg. OR N 39 deg. 27 min. 23.184 secs.	Long: W 108.044 deg. OR W -109 deg. 57 min. 22.316 secs.		
Contractor: Nabors Industries LTD.	Rig/Platform Name/Num: Nabors 574		
Job Purpose: Cement Surface Casing			
Well Type: Development Well	Job Type: Cement Surface Casing		
Sales Person: SCOTT, KYLE	Srv Supervisor: SLAUGHTER, JESSE	MBU ID Emp #: 454315	

Job Personnel

HES Emp Name	Exp Hrs	Emp #	HES Emp Name	Exp Hrs	Emp #	HES Emp Name	Exp Hrs	Emp #
BRENNECKE, ANDREW Bailey		486345	NICKLE, RYON		454759	SLAUGHTER, JESSE Dean		454315
YOUNG, JEREMY R		418013						

Equipment

HES Unit #	Distance-1 way	HES Unit #	Distance-1 way	HES Unit #	Distance-1 way	HES Unit #	Distance-1 way
10867425	60 mile	10897891	60 mile	10951245	60 mile	11560046	60 mile
11562538	60 mile						

Job Hours

Date	On Location Hours	Operating Hours	Date	On Location Hours	Operating Hours	Date	On Location Hours	Operating Hours

TOTAL Total is the sum of each column separately

Job

Formation Name	Formation Depth (MD)	Top	Bottom	Called Out	Date	Time	Time Zone
Form Type			BHST	On Location	03 - Aug - 2011	21:00	MST
Job depth MD	1224. ft		Job Depth TVD	Job Started	04 - Aug - 2011	02:00	MST
Water Depth			Wk Ht Above Floor	Job Completed	04 - Aug - 2011	08:36	MST
Perforation Depth (MD)	From		To	Job Completed	04 - Aug - 2011	09:41	MST
				Departed Loc	04 - Aug - 2011	11:00	MST

Well Data

Description	New / Used	Max pressure psig	Size in	ID in	Weight lbm/ft	Thread	Grade	Top MD ft	Bottom MD ft	Top TVD ft	Bottom TVD ft
13 1/2" Open Hole				13.5				.	1240.		
9 5/8" Surface Casing	Unknown		9.625	9.001	32.3		H-40	.	1224.		

Tools and Accessories

Type	Size	Qty	Make	Depth	Type	Size	Qty	Make	Depth	Type	Size	Qty	Make
Guide Shoe					Packer					Top Plug			
Float Shoe					Bridge Plug					Bottom Plug			
Float Collar					Retainer					SSR plug set			
Insert Float										Plug Container			
Stage Tool										Centralizers			

Miscellaneous Materials

Gelling Agt	Conc	Surfactant	Conc	Acid Type	Qty	Conc	%
Treatment Fld	Conc	Inhibitor	Conc	Sand Type	Size	Qty	

Fluid Data

Stage/Plug #: 1	Fluid #	Stage Type	Fluid Name	Qty	Qty uom	Mixing Density lbm/gal	Yield ft3/sk	Mix Fluid Gal/sk	Rate bbl/min	Total Mix Fluid Gal/sk
-----------------	---------	------------	------------	-----	---------	------------------------	--------------	------------------	--------------	------------------------

Stage/Plug #: 1										
Fluid #	Stage Type	Fluid Name	Qty	Qty uom	Mixing Density lbm/gal	Yield ft ³ /sk	Mix Fluid Gal/sk	Rate bbl/min	Total Mix Fluid Gal/sk	
1	Water Spacer		20.00	bbl	8.33	.0	.0	.0		
2	VersaCem Lead	VERSACEM (TM) SYSTEM (452010)	160.0	sacks	12.3	2.38	13.75		13.75	
	13.75 Gal	FRESH WATER								
3	VersaCem Tail	VERSACEM (TM) SYSTEM (452010)	160.0	sacks	12.8	2.11	11.75		11.75	
	11.75 Gal	FRESH WATER								
4	Displacement Fluid		93.00	bbl	8.34	.0	.0	.0		
Calculated Values		Pressures		Volumes						
Displacement		Shut In: Instant		Lost Returns		Cement Slurry		Pad		
Top Of Cement		5 Min		Cement Returns		Actual Displacement		Treatment		
Frac Gradient		15 Min		Spacers		Load and Breakdown		Total Job		
Rates										
Circulating		Mixing		Displacement		Avg. Job				
Cement Left In Pipe	Amount	40 ft	Reason	Shoe Joint						
Frac Ring # 1 @	ID	Frac ring # 2 @	ID	Frac Ring # 3 @	ID	Frac Ring # 4 @	ID			
The Information Stated Herein Is Correct				Customer Representative Signature						

The Road to Excellence Starts with Safety

Sold To #: 300721	Ship To #: 2867018	Quote #:	Sales Order #: 8335120
Customer: WILLIAMS PRODUCTION RMT INC - EBUS		Customer Rep: Towers, Ron	
Well Name: PA		Well #: 532-7	API/UWI #: 05-045-20163
Field: Parachute	City (SAP): PARACHUTE	County/Parish: Garfield	State: Colorado
Legal Description:			
Lat: N 39.456 deg. OR N 39 deg. 27 min. 23.184 secs.		Long: W 108.044 deg. OR W -109 deg. 57 min. 22.316 secs.	
Contractor: Nabors Industries LTD.		Rig/Platform Name/Num: Nabors 574	
Job Purpose: Cement Surface Casing			Ticket Amount:
Well Type: Development Well		Job Type: Cement Surface Casing	
Sales Person: SCOTT, KYLE		Srvc Supervisor: SLAUGHTER, JESSE	MBU ID Emp #: 454315

Activity Description	Date/Time	Cht #	Rate bbl/min	Volume bbl		Pressure psig		Comments
				Stage	Total	Tubing	Casing	
Call Out	08/03/2011 21:00							TD 1240 FT, TP 1224 FT, SHOE 40 FT, CSG 9 5/8 IN 32.3 LB/FT, HOLE 13 1/2 IN, MUD WT 10 PPG
Pre-Convoy Safety Meeting	08/03/2011 23:50							WITH ALL HES PERSONNEL
Crew Leave Yard	08/04/2011 00:00							
Arrive At Loc	08/04/2011 02:00							RIG WAS PULLING DRILL PIPE UPON HES ARRIVAL
Assessment Of Location Safety Meeting	08/04/2011 06:40							WITH ALL HES PERSONNEL
Other	08/04/2011 07:00							SPOT EQUIPMENT
Pre-Rig Up Safety Meeting	08/04/2011 07:20							WITH ALL HES PERSONNEL
Rig-Up Equipment	08/04/2011 07:30							
Pre-Job Safety Meeting	08/04/2011 08:20							WITH ALL PERSONNEL ON LOCATION
Start Job	08/04/2011 08:36							
Other	08/04/2011 08:36		2	2			43.0	FILL LINES WITH FRESH WATER
Test Lines	08/04/2011 08:37							TESTED LINES TO 3300 PRESSURE HOLDING
Pump Spacer 1	08/04/2011 08:43		4	20			110.0	FRESH WATER
Pump Lead Cement	08/04/2011 08:55		8	67.8			314.0	160 SKS AT 12.3 PPG, 2.38 FT3/SK, 13.75 GAL/SK
Activity Description	Date/Time	Cht	Rate bbl/min	Volume bbl		Pressure psig		Comments

Sold To # : 300721

Ship To # :2867018

Quote # :

Sales Order # :

8335120

SUMMIT Version: 7.2.27

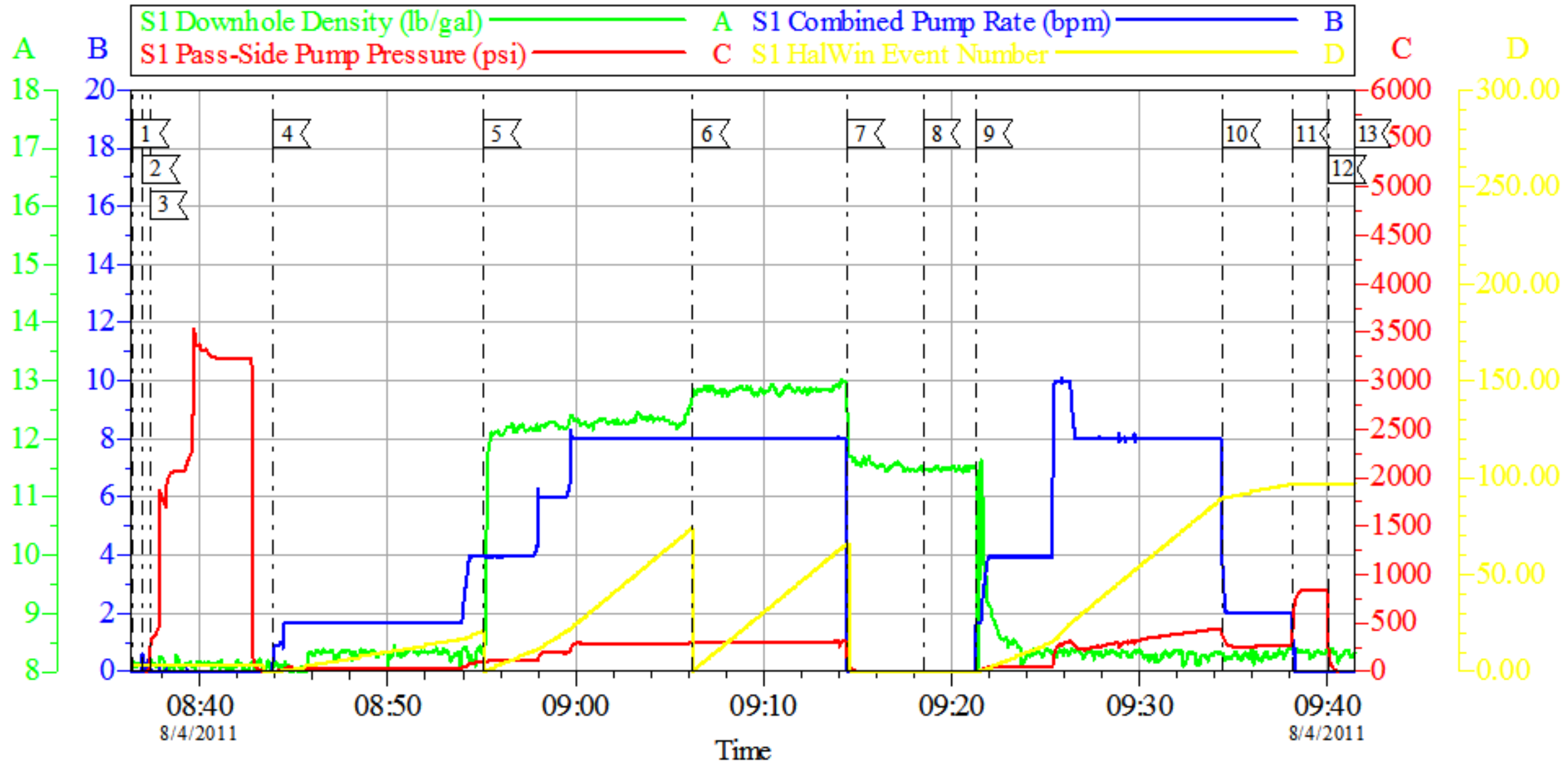
Thursday, August 04, 2011 10:41:00

Cementing Job Log

		#		Stage	Total	Tubing	Casing	
Pump Tail Cement	08/04/2011 09:06		8	60.1			333.0	160 SKS AT 12.8 PPG, 2.11 FT3/SK, 11.75 GAL/SK
Shutdown	08/04/2011 09:14							
Drop Top Plug	08/04/2011 09:18							PLUG LAUNCHED
Pump Displacement	08/04/2011 09:21		8	83.2			459.0	FRESH WATER
Slow Rate	08/04/2011 09:34		2	10			285.0	SLOW RATE 10 BBLS PRIOR TO CALCULATED DISPLACEMENT
Bump Plug	08/04/2011 09:38		2		93.2		860.0	PLUG BUMPED
Check Floats	08/04/2011 09:40							FLOATS HOLDING. HES RETURNED 1/2 BBL H2O TO PUMP
End Job	08/04/2011 09:41							PIPE WAS STATIC DURING JOB, GOOD CIRCULATION THROUGHOUT JOB. HES RETURNED 35 BBL CEMENT TO SURFACE.
Pre-Rig Down Safety Meeting	08/04/2011 09:50							WITH ALL HES PERSONNEL
Rig-Down Equipment	08/04/2011 10:00							
Pre-Convoy Safety Meeting	08/04/2011 10:50							WITH ALL HES PERSONNEL
Crew Leave Location	08/04/2011 11:00							
Comment	08/04/2011 11:01							THANK YOU FOR USING HALLIBURTON CEMENT DEPARTMENT. JESSE SLAUGHTER AND CREW.

WILLIAMS

PA 532-7, 9 5/8 SURFACE



Local Event Log

1 START JOB	08:36:24	2 PRIME LINES	08:36:57	3 TEST LINES	08:37:22
4 PUMP H2O SPACER	08:43:54	5 PUMP LEAD CEMENT	08:55:05	6 PUMP TAIL CEMENT	09:06:13
7 SHUTDOWN	09:14:27	8 DROP TOP PLUG	09:18:30	9 PUMP DISPLACEMENT	09:21:17
10 SLOW RATE	09:34:27	11 BUMP PLUG	09:38:09	12 CHECK FLOATS	09:40:05
13 END JOB	09:41:25				

Customer: WILLIAMS
Well Description: PA 532-7
Customer Rep: RON TOWERS

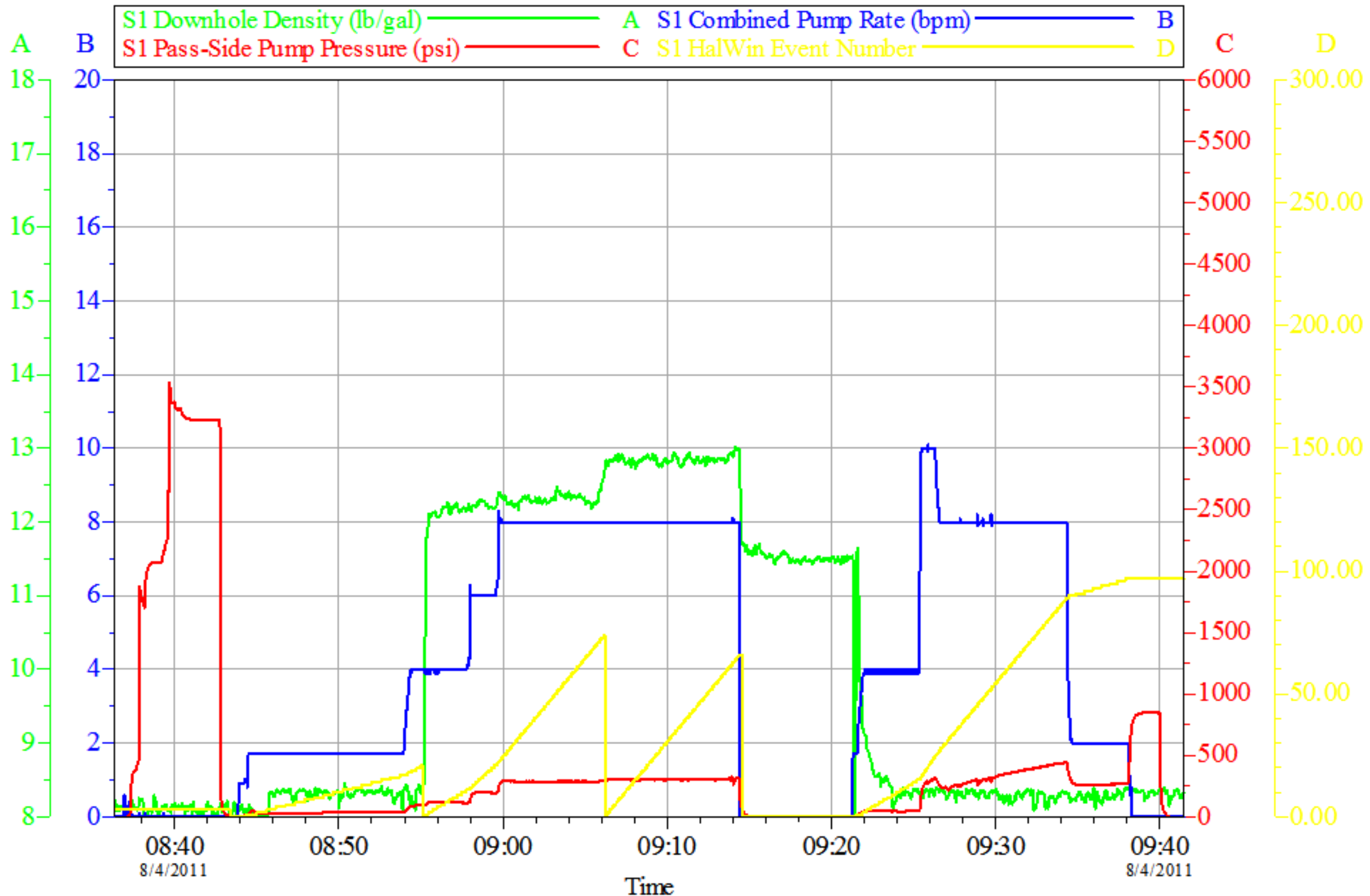
Job Date: 04-Aug-2011
Job Type: SURFACE
Service Supervisor: JESSE SLAUGHTER

Sales Order #: 8335120
ADC Used: YES
Pump #/Operator: 5/ANDREW BRENNECKE

OptiCem v6.4.10
04-Aug-11 10:15

WILLIAMS

PA 532-7, 9 5/8 SURFACE



Customer: WILLIAMS
 Well Description: PA 532-7
 Customer Rep: RON TOWERS

Job Date: 04-Aug-2011
 Job Type: SURFACE
 Service Supervisor: JESSE SLAUGHTER

Sales Order #: 8335120
 ADC Used: YES
 Pump #/Operator: 5/ANDREW BRENNECKE

OptiCem v6.4.10
 04-Aug-11 10:14