

Downhole Schematic for Kennedy 8-4-21



Project :DJ Basin

Area : Wattenberg

As Of : 03/04/2012

API # :05123319740000

County :

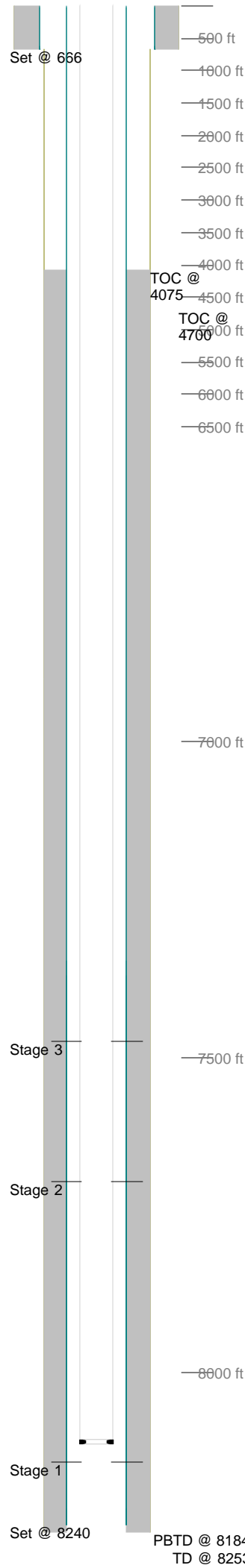
GL : 4890.0 ft

Surface Location : SENE Sec 21 T2N - R68W 6th Pl

BHL :

KB to GL : 13.0 ft

KB : 4903.0 ft



Casing Details								
Section	Hole	Casing	Mass	Set At	Length	Thread	Grade	Description
Surface	12.250		0	666	1			GS
		8.625	24	665	38		J55	SJ / BAFFLE
		8.625	24	627	614		J55	CSG
			0	13	13			LJ
Production	7.875		0	8,240	1			Guide Shoe
			11.6	8,239	23		N-80	Shoe Jt
		4.5	0	8,216	1			Float Collar
		4.5	11.6	8,215	845		N-80	Casing
		4.5	11.6	7,370	23		N-80	Marker Jt
		4.5	11.6	7,347	7,334		N-80	Casing
		4.5	11.6	13	13		N-80	Landing Jt
Cement Details								
Section	Sequence	Top	Density	Blend / Additives				
Surface	Lead	0	14.5	TYPE III Cmt Class C / + .08 lbs/sk Static Free + 1.5% Calcium Chloride + .15 lbs/sk Cello Flake + 60.5% Fresh Water.				
Production	Lead	4,075	12.5	Premium Lite Cmt / +0.1% R-3 + 0.2% CD-32 +0.7% FL-63 + 0.2% ASA-301 + 6% Bentonite + 3 lbs/sx CSE-2				
	Tail	6,900	13.5	(50:50 Poz,Fly Ash / Class G Cmt + 0.1% R-3 + 0.6% FL-63 + 3% Bentonite + 0.1% SM + 20% Silica Flour				
Tubing and Downhole Equipment								
O.D.	Length	Depth	Description					
2.375	1.10	8,106.00	Seat nipple					
2.375	8,107.43	8,107.43	247 jst of 2 3/8 J-55 8rd eue					
2.375	13.00	8,120.43	KB					
Perforations								
Stage 1						01/23/2012	7,696	7,718 44
	Date	From	To	Shots	Stage 3			
	01/19/2012	8,141	8,165	48	Date	From	To	Shots
Stage 2						01/23/2012	7,475	7,495 80
	Date	From	To	Shots				
Frac Summary								
Stage 1 : 8,141 - 8,165, 48 - 0.420" shots, 3857 bbls of Hybrid pHaserFrac, 252820 lbs of 20/40 Sand								
Report Date: 01/23/2012								
Stage 2 : 7,696 - 7,718, 44 - 0.420" shots, 5069 bbls of FR Water, 154000 lbs of 30/50 Sand Report Date: 01/23/2012								
Stage 3 : 7,475 - 7,495, 80 - 0.420" shots, 5358 bbls of FR Water, 160320 lbs of 20/40 Sand Report Date: 01/23/2012								
Bridge Plug Details								
Depth	Date Set	Plug Type	Sacks Cement					
7,540.0	01/31/2012	CFP	0					
7,760.0	01/31/2012	CFP	0					
CFP at 7,540.0 drilled out 03/03/2012								
CFP at 7,760.0 drilled out 03/03/2012								