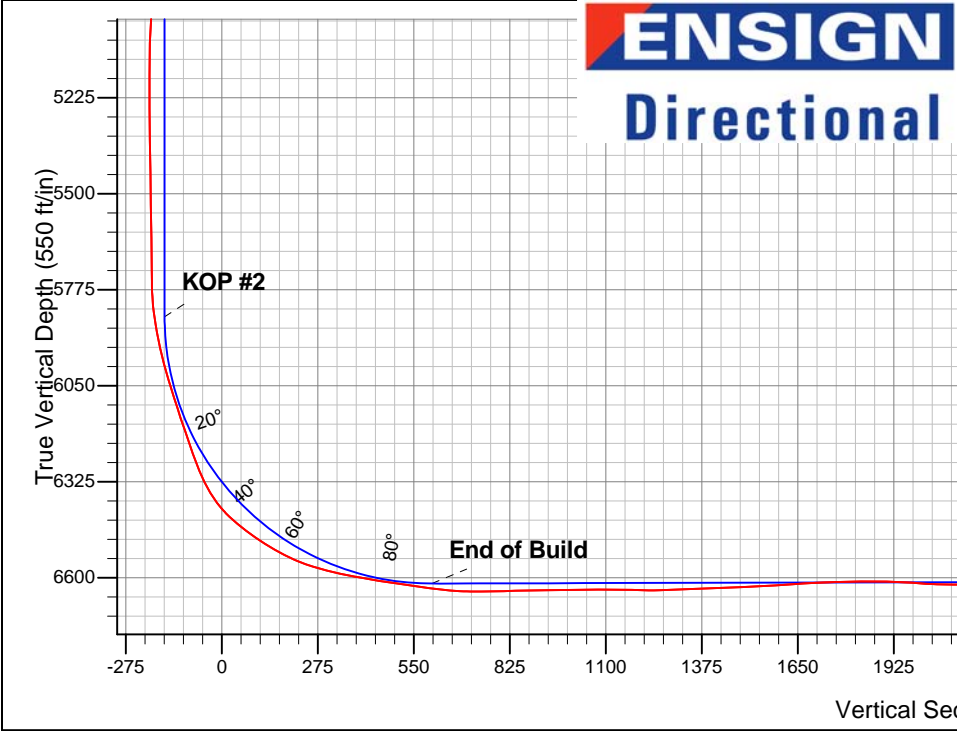
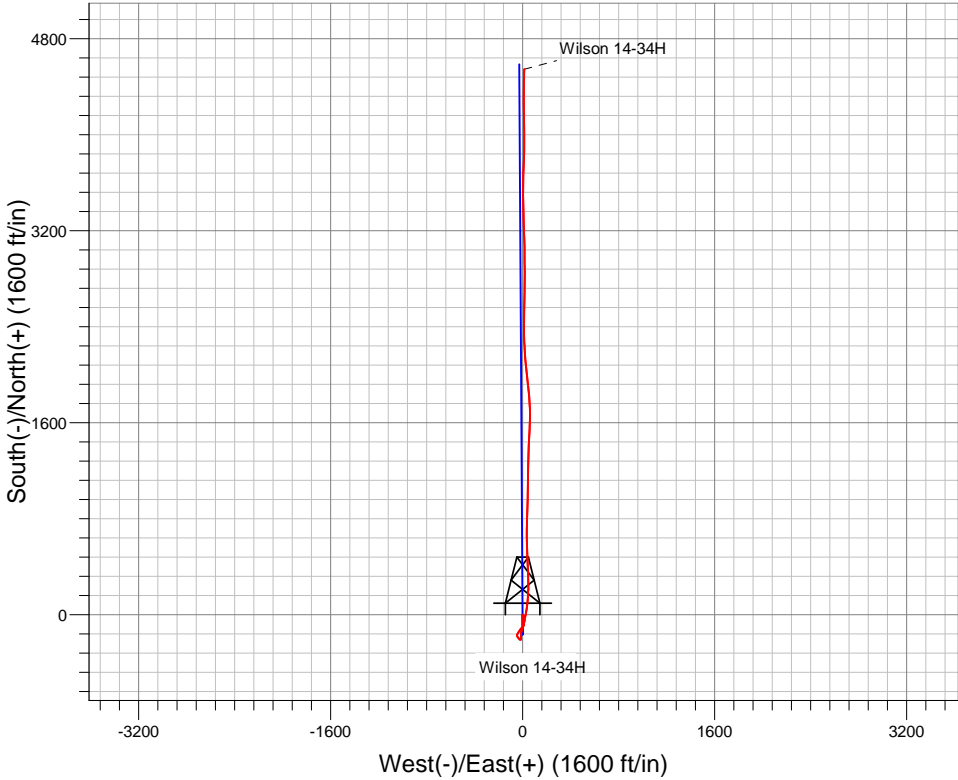


PETROLEUM DEVELOPMENT CORP Weld County CO

Well Name: **Wilson 14-34H**  
Surface Location: Wilson 14-34H Pad Sec.34-T7N-R63W  
North American Datum 1983 , US State Plane 1983 , Colorado Northern Zone  
Ground Elevation: 4717.0  
+N/-S +E/-W Northing Easting Latitude Longitude Slot  
0.0 0.0 1435375.45 3297452.84 40.523580 -104.430010  
RKB Ensign 32 - 15' WELL @ 4732.0ft (RKB Ensign 32 - 15')

FINAL SURVEY

Projected Bottom Hole Location  
11060'MD 6638'TVD 4546'N & 14'E of SHL  
90.4 degree Incl @ 1.8 degree AZM



Wilson 14-34H Pad Sec.34-T7N-R63W Wilson 14-34H Wellbore #1 8:41, February 07 2012	ANNOTATIONS
	No annotation data is available.
LEGEND	
Wilson 14-34H, Wellbore #1, Plan #2 (1-20-12) V0	
Survey #1	



# **PETROLEUM DEVELOPMENT CORP Weld County CO**

**SEC.34-T7N-R63W**

**Wilson 14-34H Pad Sec.34-T7N-R63W**

**Wilson 14-34H**

**Wellbore #1**

**Survey: Survey #1**

## **Standard Survey Report**

**07 February, 2012**

<b>Company:</b>	PETROLEUM DEVELOPMENT CORP Weld County CO	<b>Local Co-ordinate Reference:</b>	Well Wilson 14-34H
<b>Project:</b>	SEC.34-T7N-R63W	<b>TVD Reference:</b>	WELL @ 4732.0ft (RKB Ensign 32 - 15')
<b>Site:</b>	Wilson 14-34H Pad Sec.34-T7N-R63W	<b>MD Reference:</b>	WELL @ 4732.0ft (RKB Ensign 32 - 15')
<b>Well:</b>	Wilson 14-34H	<b>North Reference:</b>	True
<b>Wellbore:</b>	Wellbore #1	<b>Survey Calculation Method:</b>	Minimum Curvature
<b>Design:</b>	Wellbore #1	<b>Database:</b>	Landmark

<b>Project</b>	SEC.34-T7N-R63W, Weld County, Colorado		
<b>Map System:</b>	US State Plane 1983	<b>System Datum:</b>	Mean Sea Level
<b>Geo Datum:</b>	North American Datum 1983		Using Well Reference Point
<b>Map Zone:</b>	Colorado Northern Zone		Using geodetic scale factor

Site		Wilson 14-34H Pad Sec.34-T7N-R63W			
Site Position:		Northing:	1,435,375.47 ft	Latitude:	40.523580
From:	Lat/Long	Easting:	3,297,452.84 ft	Longitude:	-104.430010
Position Uncertainty:	0.0 ft	Slot Radius:	"	Grid Convergence:	0.69 °

Well	Wilson 14-34H					
Well Position	+N-S	0.0 ft	Northing:	1,435,375.45 ft	Latitude:	40.523580
	+E-W	0.0 ft	Easting:	3,297,452.84 ft	Longitude:	-104.430010
Position Uncertainty		0.0 ft	Wellhead Elevation:	ft	Ground Level:	4,717.0 ft

<b>Wellbore</b>	Wellbore #1				
<b>Magnetics</b>	<b>Model Name</b>	<b>Sample Date</b>	<b>Declination (°)</b>	<b>Dip Angle (°)</b>	<b>Field Strength (nT)</b>
	IGRF2010	1/6/2012	8.62	67.19	53,173

<b>Design</b>	Wellbore #1				
<b>Audit Notes:</b>					
<b>Version:</b>	1.0	<b>Phase:</b>	ACTUAL	<b>Tie On Depth:</b>	0.0
<b>Vertical Section:</b>	<b>Depth From (TVD) (ft)</b>	<b>+N/-S (ft)</b>	<b>+E/-W (ft)</b>	<b>Direction (°)</b>	
	0.0	0.0	0.0	359.65	

<b>Survey Program</b>	<b>Date</b> 2/7/2012				
<b>From (ft)</b>	<b>To (ft)</b>	<b>Survey (Wellbore)</b>	<b>Tool Name</b>	<b>Description</b>	
886.0	11,060.0	Survey #1 (Wellbore #1)	MWD	MWD - Standard	

<b>Survey</b>									
<b>Measured Depth (ft)</b>	<b>Inclination (°)</b>	<b>Azimuth (°)</b>	<b>Vertical Depth (ft)</b>	<b>+N/-S (ft)</b>	<b>+E/-W (ft)</b>	<b>Vertical Section (ft)</b>	<b>Dogleg Rate (°/100ft)</b>	<b>Build Rate (°/100ft)</b>	<b>Turn Rate (°/100ft)</b>
0.0	0.00	0.00	0.0	0.0	0.0	0.0	0.00	0.00	0.00
1.0	0.00	0.00	1.0	0.0	0.0	0.0	0.00	0.00	0.00
<b>SHL HARDLINE 460'FSL - WEST HARDLINE 460'FWL - SECTION LINE 214'S OF SHL - BHL HARDLINE 460'FNL</b>									
1.3	0.00	125.30	1.3	0.0	0.0	0.0	0.00	0.00	0.00
<b>WEST HARD LINE 460'FWL</b>									
886.0	0.70	125.30	886.0	-3.1	4.4	-3.2	0.08	0.08	0.00
978.0	0.80	127.90	978.0	-3.8	5.4	-3.9	0.11	0.11	2.83
1,071.0	0.70	127.50	1,071.0	-4.6	6.3	-4.6	0.11	-0.11	-0.43
1,163.0	0.90	133.90	1,163.0	-5.4	7.3	-5.5	0.24	0.22	6.96
1,257.0	0.70	193.00	1,256.9	-6.5	7.7	-6.6	0.86	-0.21	62.87
1,350.0	1.50	198.20	1,349.9	-8.2	7.2	-8.3	0.87	0.86	5.59
1,443.0	2.10	189.90	1,442.9	-11.1	6.5	-11.1	0.70	0.65	-8.92

<b>Company:</b>	PETROLEUM DEVELOPMENT CORP Weld County CO	<b>Local Co-ordinate Reference:</b>	Well Wilson 14-34H
<b>Project:</b>	SEC.34-T7N-R63W	<b>TVD Reference:</b>	WELL @ 4732.0ft (RKB Ensign 32 - 15')
<b>Site:</b>	Wilson 14-34H Pad Sec.34-T7N-R63W	<b>MD Reference:</b>	WELL @ 4732.0ft (RKB Ensign 32 - 15')
<b>Well:</b>	Wilson 14-34H	<b>North Reference:</b>	True
<b>Wellbore:</b>	Wellbore #1	<b>Survey Calculation Method:</b>	Minimum Curvature
<b>Design:</b>	Wellbore #1	<b>Database:</b>	Landmark

Survey									
Measured Depth (ft)	Inclination (°)	Azimuth (°)	Vertical Depth (ft)	+N/-S (ft)	+E/-W (ft)	Vertical Section (ft)	Dogleg Rate (°/100ft)	Build Rate (°/100ft)	Turn Rate (°/100ft)
1,536.0	2.30	199.70	1,535.8	-14.5	5.6	-14.5	0.46	0.22	10.54
1,629.0	2.70	184.30	1,628.7	-18.4	4.8	-18.5	0.84	0.43	-16.56
1,722.0	2.30	180.70	1,721.6	-22.5	4.6	-22.5	0.46	-0.43	-3.87
1,815.0	2.70	177.20	1,814.5	-26.5	4.7	-26.6	0.46	0.43	-3.76
1,909.0	2.20	174.30	1,908.5	-30.5	5.0	-30.6	0.55	-0.53	-3.09
2,002.0	2.70	185.30	2,001.4	-34.5	5.0	-34.5	0.74	0.54	11.83
2,095.0	2.20	194.20	2,094.3	-38.4	4.3	-38.4	0.67	-0.54	9.57
2,188.0	2.90	187.80	2,187.2	-42.5	3.6	-42.5	0.81	0.75	-6.88
2,281.0	2.50	187.80	2,280.1	-46.8	3.0	-46.8	0.43	-0.43	0.00
2,374.0	2.60	176.40	2,373.0	-50.9	2.8	-50.9	0.55	0.11	-12.26
2,468.0	2.50	176.70	2,466.9	-55.1	3.1	-55.1	0.11	-0.11	0.32
2,561.0	2.50	174.30	2,559.8	-59.1	3.4	-59.2	0.11	0.00	-2.58
2,654.0	2.30	173.90	2,652.7	-63.0	3.8	-63.0	0.22	-0.22	-0.43
2,748.0	2.80	172.90	2,746.6	-67.2	4.3	-67.2	0.53	0.53	-1.06
2,841.0	2.60	171.70	2,839.5	-71.5	4.9	-71.5	0.22	-0.22	-1.29
2,935.0	2.50	172.30	2,933.5	-75.7	5.5	-75.7	0.11	-0.11	0.64
3,028.0	2.30	166.40	3,026.4	-79.5	6.2	-79.5	0.34	-0.22	-6.34
3,121.0	2.20	168.10	3,119.3	-83.0	7.0	-83.1	0.13	-0.11	1.83
3,214.0	2.50	180.00	3,212.2	-86.8	7.4	-86.9	0.61	0.32	12.80
3,306.0	2.10	186.50	3,304.1	-90.5	7.2	-90.5	0.52	-0.43	7.07
3,399.0	2.00	205.00	3,397.1	-93.7	6.3	-93.7	0.72	-0.11	19.89
3,492.0	2.60	228.00	3,490.0	-96.5	4.0	-96.6	1.17	0.65	24.73
3,586.0	3.60	217.50	3,583.9	-100.3	0.6	-100.3	1.22	1.06	-11.17
3,679.0	5.10	220.90	3,676.6	-105.7	-3.8	-105.7	1.64	1.61	3.66
3,772.0	5.80	220.90	3,769.2	-112.4	-9.6	-112.4	0.75	0.75	0.00
3,866.0	6.20	220.60	3,862.7	-119.9	-16.0	-119.8	0.43	0.43	-0.32
3,959.0	6.20	217.80	3,955.1	-127.6	-22.4	-127.5	0.33	0.00	-3.01
4,052.0	6.10	214.90	4,047.6	-135.7	-28.3	-135.5	0.35	-0.11	-3.12
4,145.0	5.30	213.00	4,140.1	-143.3	-33.5	-143.1	0.88	-0.86	-2.04
4,238.0	4.50	209.60	4,232.8	-150.1	-37.6	-149.9	0.91	-0.86	-3.66
4,331.0	4.00	208.70	4,325.5	-156.1	-41.0	-155.9	0.54	-0.54	-0.97
4,424.0	3.60	210.00	4,418.3	-161.5	-44.0	-161.2	0.44	-0.43	1.40
4,518.0	4.10	194.80	4,512.1	-167.3	-46.3	-167.0	1.20	0.53	-16.17
4,611.0	4.60	170.10	4,604.9	-174.2	-46.5	-173.9	2.07	0.54	-26.56
4,704.0	5.40	151.90	4,697.5	-181.7	-43.8	-181.5	1.90	0.86	-19.57
4,796.0	5.10	145.00	4,789.1	-188.9	-39.4	-188.6	0.76	-0.33	-7.50
4,889.0	5.10	141.20	4,881.8	-195.5	-34.5	-195.3	0.36	0.00	-4.09
4,983.0	4.70	139.10	4,975.4	-201.7	-29.3	-201.5	0.47	-0.43	-2.23
5,076.0	3.80	120.70	5,068.2	-206.1	-24.2	-206.0	1.74	-0.97	-19.78
5,169.0	2.90	87.10	5,161.0	-207.6	-19.2	-207.5	2.28	-0.97	-36.13
5,262.0	1.40	76.20	5,253.9	-207.2	-15.7	-207.1	1.66	-1.61	-11.72
5,356.0	0.90	2.70	5,347.9	-206.2	-14.6	-206.1	1.52	-0.53	-78.19
5,449.0	0.90	1.20	5,440.9	-204.7	-14.5	-204.6	0.03	0.00	-1.61
5,542.0	0.80	348.10	5,533.9	-203.3	-14.6	-203.3	0.23	-0.11	-14.09
5,635.0	0.70	0.30	5,626.9	-202.1	-14.8	-202.0	0.20	-0.11	13.12
5,728.0	0.80	3.30	5,719.9	-200.9	-14.7	-200.8	0.12	0.11	3.23
5,759.0	1.00	357.20	5,750.9	-200.4	-14.7	-200.3	0.71	0.65	-19.68
5,790.0	2.00	0.50	5,781.9	-199.6	-14.7	-199.5	3.24	3.23	10.65
5,821.0	4.90	5.70	5,812.8	-197.8	-14.6	-197.7	9.40	9.35	16.77
5,852.0	7.60	5.00	5,843.6	-194.4	-14.3	-194.3	8.71	8.71	-2.26
5,883.0	9.50	3.70	5,874.3	-189.8	-14.0	-189.7	6.16	6.13	-4.19
5,915.0	10.60	1.40	5,905.8	-184.2	-13.7	-184.1	3.66	3.44	-7.19
5,946.0	12.10	357.70	5,936.2	-178.1	-13.8	-178.1	5.38	4.84	-11.94
5,977.0	13.70	359.60	5,966.4	-171.2	-13.9	-171.1	5.34	5.16	6.13

<b>Company:</b>	PETROLEUM DEVELOPMENT CORP Weld County CO	<b>Local Co-ordinate Reference:</b>	Well Wilson 14-34H
<b>Project:</b>	SEC.34-T7N-R63W	<b>TVD Reference:</b>	WELL @ 4732.0ft (RKB Ensign 32 - 15')
<b>Site:</b>	Wilson 14-34H Pad Sec.34-T7N-R63W	<b>MD Reference:</b>	WELL @ 4732.0ft (RKB Ensign 32 - 15')
<b>Well:</b>	Wilson 14-34H	<b>North Reference:</b>	True
<b>Wellbore:</b>	Wellbore #1	<b>Survey Calculation Method:</b>	Minimum Curvature
<b>Design:</b>	Wellbore #1	<b>Database:</b>	Landmark

Survey									
Measured Depth (ft)	Inclination (°)	Azimuth (°)	Vertical Depth (ft)	+N/-S (ft)	+E/-W (ft)	Vertical Section (ft)	Dogleg Rate (°/100ft)	Build Rate (°/100ft)	Turn Rate (°/100ft)
6,008.0	15.30	4.10	5,996.4	-163.5	-13.7	-163.4	6.31	5.16	14.52
6,039.0	16.40	8.30	6,026.2	-155.1	-12.7	-155.0	5.12	3.55	13.55
6,070.0	18.20	11.40	6,055.8	-146.0	-11.2	-145.9	6.52	5.81	10.00
6,101.0	18.20	17.30	6,085.3	-136.6	-8.8	-136.6	5.94	0.00	19.03
6,132.0	18.50	18.60	6,114.7	-127.3	-5.7	-127.3	1.64	0.97	4.19
6,163.0	19.30	19.50	6,144.0	-117.8	-2.5	-117.8	2.75	2.58	2.90
6,194.0	20.40	18.00	6,173.2	-107.9	0.9	-107.9	3.91	3.55	-4.84
6,225.0	20.10	16.70	6,202.3	-97.6	4.1	-97.7	1.74	-0.97	-4.19
6,256.0	20.80	16.60	6,231.3	-87.3	7.2	-87.3	2.26	2.26	-0.32
6,287.0	19.90	14.20	6,260.4	-76.9	10.1	-76.9	3.96	-2.90	-7.74
6,318.0	22.10	11.70	6,289.3	-66.0	12.6	-66.1	7.66	7.10	-8.06
6,349.0	25.40	10.50	6,317.7	-53.8	15.0	-53.9	10.76	10.65	-3.87
6,380.0	29.50	9.50	6,345.2	-39.7	17.4	-39.8	13.31	13.23	-3.23
6,411.0	34.60	10.20	6,371.5	-23.5	20.2	-23.6	16.49	16.45	2.26
6,442.0	39.60	11.10	6,396.2	-5.1	23.7	-5.3	16.22	16.13	2.90
6,473.0	45.10	10.90	6,419.1	15.3	27.7	15.2	17.75	17.74	-0.65
6,504.0	49.90	9.90	6,440.0	37.8	31.8	37.6	15.67	15.48	-3.23
6,535.0	52.70	7.80	6,459.4	61.7	35.5	61.5	10.46	9.03	-6.77
6,566.0	54.90	6.60	6,477.7	86.5	38.7	86.3	7.75	7.10	-3.87
6,597.0	56.50	5.60	6,495.2	112.0	41.4	111.8	5.81	5.16	-3.23
6,628.0	58.60	4.80	6,511.8	138.1	43.7	137.8	7.12	6.77	-2.58
6,659.0	61.40	2.60	6,527.3	164.8	45.5	164.6	10.92	9.03	-7.10
6,690.0	64.60	1.60	6,541.4	192.4	46.5	192.2	10.72	10.32	-3.23
6,721.0	68.10	0.50	6,553.8	220.8	47.0	220.5	11.75	11.29	-3.55
6,752.0	71.40	359.30	6,564.6	249.9	46.9	249.6	11.25	10.65	-3.87
6,783.0	73.80	358.80	6,573.8	279.5	46.4	279.2	7.89	7.74	-1.61
6,814.0	76.00	358.60	6,581.9	309.4	45.8	309.1	7.12	7.10	-0.65
6,845.0	78.20	358.30	6,588.8	339.6	44.9	339.3	7.16	7.10	-0.97
6,876.0	79.70	358.50	6,594.8	370.0	44.1	369.7	4.88	4.84	0.65
6,907.0	79.70	358.20	6,600.3	400.5	43.2	400.2	0.95	0.00	-0.97
6,938.0	79.70	358.00	6,605.8	431.0	42.2	430.7	0.63	0.00	-0.65
7,001.0	82.40	358.00	6,615.6	493.2	40.0	492.9	4.29	4.29	0.00
7,033.0	81.80	357.90	6,620.0	524.9	38.9	524.6	1.90	-1.88	-0.31
7,065.0	81.80	357.10	6,624.6	556.5	37.5	556.3	2.47	0.00	-2.50
7,096.0	81.70	356.80	6,629.1	587.1	35.9	586.9	1.01	-0.32	-0.97
7,128.0	83.20	358.30	6,633.3	618.8	34.5	618.6	6.60	4.69	4.69
7,159.0	84.80	359.50	6,636.5	649.6	33.9	649.4	6.44	5.16	3.87
7,191.0	87.30	0.40	6,638.7	681.6	33.9	681.4	8.30	7.81	2.81
7,222.0	89.30	2.40	6,639.6	712.5	34.7	712.3	9.12	6.45	6.45
7,254.0	90.60	2.10	6,639.7	744.5	35.9	744.3	4.17	4.06	-0.94
7,286.0	90.80	1.40	6,639.3	776.5	36.9	776.3	2.27	0.63	-2.19
7,318.0	91.30	1.10	6,638.7	808.5	37.6	808.2	1.82	1.56	-0.94
7,350.0	91.50	1.90	6,637.9	840.5	38.4	840.2	2.58	0.63	2.50
7,382.0	91.40	2.00	6,637.1	872.4	39.5	872.2	0.44	-0.31	0.31
7,414.0	91.20	1.30	6,636.4	904.4	40.5	904.2	2.27	-0.63	-2.19
7,446.0	90.60	1.10	6,635.9	936.4	41.1	936.1	1.98	-1.88	-0.63
7,478.0	90.80	1.70	6,635.5	968.4	41.9	968.1	1.98	0.63	1.88
7,510.0	90.60	1.40	6,635.1	1,000.4	42.8	1,000.1	1.13	-0.63	-0.94
7,541.0	90.70	0.50	6,634.7	1,031.4	43.3	1,031.1	2.92	0.32	-2.90
7,573.0	90.30	1.10	6,634.4	1,063.4	43.7	1,063.1	2.25	-1.25	1.88
7,605.0	90.00	0.50	6,634.4	1,095.4	44.2	1,095.1	2.10	-0.94	-1.88
7,637.0	89.40	0.40	6,634.5	1,127.4	44.4	1,127.1	1.90	-1.88	-0.31
7,669.0	88.80	1.40	6,635.0	1,159.4	44.9	1,159.1	3.64	-1.88	3.13

<b>Company:</b>	PETROLEUM DEVELOPMENT CORP Weld County CO	<b>Local Co-ordinate Reference:</b>	Well Wilson 14-34H
<b>Project:</b>	SEC.34-T7N-R63W	<b>TVD Reference:</b>	WELL @ 4732.0ft (RKB Ensign 32 - 15')
<b>Site:</b>	Wilson 14-34H Pad Sec.34-T7N-R63W	<b>MD Reference:</b>	WELL @ 4732.0ft (RKB Ensign 32 - 15')
<b>Well:</b>	Wilson 14-34H	<b>North Reference:</b>	True
<b>Wellbore:</b>	Wellbore #1	<b>Survey Calculation Method:</b>	Minimum Curvature
<b>Design:</b>	Wellbore #1	<b>Database:</b>	Landmark

Survey									
Measured Depth (ft)	Inclination (°)	Azimuth (°)	Vertical Depth (ft)	+N/-S (ft)	+E/-W (ft)	Vertical Section (ft)	Dogleg Rate (°/100ft)	Build Rate (°/100ft)	Turn Rate (°/100ft)
7,700.0	88.40	0.40	6,635.8	1,190.3	45.4	1,190.0	3.47	-1.29	-3.23
7,732.0	89.60	0.60	6,636.3	1,222.3	45.7	1,222.0	3.80	3.75	0.63
7,764.0	91.40	1.00	6,636.1	1,254.3	46.1	1,254.0	5.76	5.63	1.25
7,795.0	92.30	1.60	6,635.1	1,285.3	46.8	1,285.0	3.49	2.90	1.94
7,827.0	92.30	2.10	6,633.8	1,317.3	47.9	1,316.9	1.56	0.00	1.56
7,858.0	92.50	2.10	6,632.5	1,348.2	49.0	1,347.9	0.65	0.65	0.00
7,890.0	92.40	2.60	6,631.1	1,380.2	50.3	1,379.8	1.59	-0.31	1.56
7,921.0	92.00	2.90	6,629.9	1,411.1	51.8	1,410.8	1.61	-1.29	0.97
7,953.0	92.00	1.70	6,628.8	1,443.1	53.1	1,442.7	3.75	0.00	-3.75
7,985.0	92.20	3.10	6,627.6	1,475.0	54.4	1,474.6	4.42	0.63	4.38
8,017.0	92.20	2.20	6,626.4	1,506.9	55.9	1,506.6	2.81	0.00	-2.81
8,048.0	93.20	3.60	6,624.9	1,537.9	57.5	1,537.5	5.55	3.23	4.52
8,080.0	93.40	1.40	6,623.1	1,569.8	58.9	1,569.4	6.89	0.63	-6.88
8,113.0	93.70	2.30	6,621.1	1,602.7	59.9	1,602.3	2.87	0.91	2.73
8,144.0	94.00	1.80	6,619.0	1,633.6	61.0	1,633.2	1.88	0.97	-1.61
8,176.0	93.50	0.80	6,616.9	1,665.5	61.8	1,665.1	3.49	-1.56	-3.13
8,209.0	93.20	359.00	6,615.0	1,698.5	61.7	1,698.1	5.52	-0.91	-5.45
8,241.0	92.00	357.00	6,613.5	1,730.4	60.6	1,730.0	7.28	-3.75	-6.25
8,272.0	91.20	355.50	6,612.6	1,761.3	58.6	1,761.0	5.48	-2.58	-4.84
8,304.0	91.00	356.30	6,612.0	1,793.3	56.3	1,792.9	2.58	-0.63	2.50
8,336.0	91.20	355.80	6,611.4	1,825.2	54.1	1,824.8	1.68	0.63	-1.56
8,368.0	91.10	354.60	6,610.8	1,857.1	51.4	1,856.7	3.76	-0.31	-3.75
8,400.0	89.30	353.90	6,610.7	1,888.9	48.2	1,888.6	6.04	-5.63	-2.19
8,432.0	87.00	353.90	6,611.7	1,920.7	44.8	1,920.4	7.19	-7.19	0.00
8,465.0	86.30	353.00	6,613.6	1,953.4	41.0	1,953.1	3.45	-2.12	-2.73
8,497.0	86.00	353.10	6,615.8	1,985.1	37.2	1,984.9	0.99	-0.94	0.31
8,529.0	86.80	353.80	6,617.8	2,016.8	33.5	2,016.6	3.32	2.50	2.19
8,561.0	88.30	353.90	6,619.1	2,048.6	30.1	2,048.4	4.70	4.69	0.31
8,593.0	89.50	354.60	6,619.8	2,080.5	26.9	2,080.3	4.34	3.75	2.19
8,625.0	90.00	355.50	6,619.9	2,112.3	24.1	2,112.2	3.22	1.56	2.81
8,657.0	90.30	355.40	6,619.8	2,144.2	21.6	2,144.1	0.99	0.94	-0.31
8,689.0	90.50	355.80	6,619.6	2,176.1	19.1	2,176.0	1.40	0.63	1.25
8,720.0	90.50	356.90	6,619.3	2,207.1	17.2	2,206.9	3.55	0.00	3.55
8,752.0	90.70	357.20	6,619.0	2,239.0	15.5	2,238.9	1.13	0.63	0.94
8,784.0	90.50	356.90	6,618.7	2,271.0	13.9	2,270.9	1.13	-0.63	-0.94
8,816.0	90.20	358.20	6,618.5	2,303.0	12.5	2,302.8	4.17	-0.94	4.06
8,847.0	90.00	0.20	6,618.4	2,334.0	12.1	2,333.8	6.48	-0.65	6.45
8,879.0	90.00	359.50	6,618.4	2,366.0	12.0	2,365.8	2.19	0.00	-2.19
8,911.0	89.80	359.20	6,618.5	2,398.0	11.6	2,397.8	1.13	-0.63	-0.94
8,943.0	89.90	359.80	6,618.5	2,429.9	11.4	2,429.8	1.90	0.31	1.88
8,975.0	89.20	1.10	6,618.8	2,461.9	11.6	2,461.8	4.61	-2.19	4.06
9,006.0	89.00	1.10	6,619.3	2,492.9	12.2	2,492.8	0.65	-0.65	0.00
9,038.0	89.80	1.10	6,619.6	2,524.9	12.8	2,524.8	2.50	2.50	0.00
9,070.0	90.50	1.70	6,619.5	2,556.9	13.6	2,556.8	2.88	2.19	1.88
9,102.0	91.00	0.90	6,619.1	2,588.9	14.3	2,588.8	2.95	1.56	-2.50
9,134.0	91.00	1.40	6,618.6	2,620.9	15.0	2,620.8	1.56	0.00	1.56
9,166.0	91.00	1.20	6,618.0	2,652.9	15.7	2,652.7	0.62	0.00	-0.63
9,198.0	91.30	0.20	6,617.4	2,684.9	16.1	2,684.7	3.26	0.94	-3.13
9,230.0	91.30	1.20	6,616.6	2,716.9	16.5	2,716.7	3.12	0.00	3.13
9,262.0	90.60	0.00	6,616.1	2,748.9	16.8	2,748.7	4.34	-2.19	-3.75
9,294.0	90.60	359.70	6,615.8	2,780.9	16.7	2,780.7	0.94	0.00	-0.94
9,326.0	90.40	359.70	6,615.5	2,812.9	16.6	2,812.7	0.63	-0.63	0.00
9,358.0	90.20	359.40	6,615.3	2,844.9	16.3	2,844.7	1.13	-0.63	-0.94

<b>Company:</b>	PETROLEUM DEVELOPMENT CORP Weld County CO	<b>Local Co-ordinate Reference:</b>	Well Wilson 14-34H
<b>Project:</b>	SEC.34-T7N-R63W	<b>TVD Reference:</b>	WELL @ 4732.0ft (RKB Ensign 32 - 15')
<b>Site:</b>	Wilson 14-34H Pad Sec.34-T7N-R63W	<b>MD Reference:</b>	WELL @ 4732.0ft (RKB Ensign 32 - 15')
<b>Well:</b>	Wilson 14-34H	<b>North Reference:</b>	True
<b>Wellbore:</b>	Wellbore #1	<b>Survey Calculation Method:</b>	Minimum Curvature
<b>Design:</b>	Wellbore #1	<b>Database:</b>	Landmark

Survey									
Measured Depth (ft)	Inclination (°)	Azimuth (°)	Vertical Depth (ft)	+N/-S (ft)	+E/-W (ft)	Vertical Section (ft)	Dogleg Rate (°/100ft)	Build Rate (°/100ft)	Turn Rate (°/100ft)
9,389.0	90.30	0.10	6,615.2	2,875.9	16.2	2,875.7	2.28	0.32	2.26
9,421.0	90.70	359.70	6,614.9	2,907.8	16.1	2,907.7	1.77	1.25	-1.25
9,452.0	90.00	0.40	6,614.7	2,938.8	16.1	2,938.7	3.19	-2.26	2.26
9,484.0	89.90	359.90	6,614.7	2,970.8	16.2	2,970.7	1.59	-0.31	-1.56
9,516.0	89.80	359.50	6,614.8	3,002.8	16.1	3,002.7	1.29	-0.31	-1.25
9,548.0	89.30	0.00	6,615.1	3,034.8	15.9	3,034.7	2.21	-1.56	1.56
9,580.0	88.90	359.10	6,615.6	3,066.8	15.7	3,066.7	3.08	-1.25	-2.81
9,612.0	88.40	359.40	6,616.3	3,098.8	15.2	3,098.7	1.82	-1.56	0.94
9,644.0	88.10	358.80	6,617.3	3,130.8	14.7	3,130.7	2.10	-0.94	-1.88
9,676.0	87.60	358.50	6,618.5	3,162.8	14.0	3,162.6	1.82	-1.56	-0.94
9,708.0	87.60	357.10	6,619.8	3,194.7	12.8	3,194.6	4.37	0.00	-4.38
9,740.0	87.60	357.50	6,621.2	3,226.7	11.3	3,226.5	1.25	0.00	1.25
9,772.0	88.20	357.90	6,622.4	3,258.6	10.0	3,258.5	2.25	1.88	1.25
9,805.0	88.20	357.50	6,623.4	3,291.6	8.6	3,291.5	1.21	0.00	-1.21
9,837.0	88.40	357.80	6,624.3	3,323.5	7.3	3,323.4	1.13	0.63	0.94
9,869.0	88.70	357.10	6,625.2	3,355.5	5.9	3,355.4	2.38	0.94	-2.19
9,901.0	88.40	358.30	6,626.0	3,387.5	4.6	3,387.4	3.86	-0.94	3.75
9,933.0	87.90	358.30	6,627.0	3,419.4	3.7	3,419.3	1.56	-1.56	0.00
9,965.0	87.50	0.30	6,628.3	3,451.4	3.3	3,451.3	6.37	-1.25	6.25
9,997.0	88.10	0.50	6,629.5	3,483.4	3.5	3,483.3	1.98	1.88	0.63
10,029.0	89.50	1.30	6,630.2	3,515.4	4.0	3,515.3	5.04	4.38	2.50
10,061.0	90.60	1.50	6,630.2	3,547.3	4.8	3,547.3	3.49	3.44	0.63
10,093.0	90.60	1.00	6,629.8	3,579.3	5.5	3,579.2	1.56	0.00	-1.56
10,125.0	90.40	1.10	6,629.5	3,611.3	6.1	3,611.2	0.70	-0.63	0.31
10,157.0	90.30	1.10	6,629.3	3,643.3	6.7	3,643.2	0.31	-0.31	0.00
10,189.0	90.00	2.00	6,629.3	3,675.3	7.6	3,675.2	2.96	-0.94	2.81
10,221.0	89.90	1.00	6,629.3	3,707.3	8.4	3,707.2	3.14	-0.31	-3.13
10,252.0	89.60	0.90	6,629.4	3,738.3	8.9	3,738.2	1.02	-0.97	-0.32
10,284.0	89.10	1.90	6,629.8	3,770.3	9.7	3,770.2	3.49	-1.56	3.13
10,316.0	88.60	0.90	6,630.4	3,802.3	10.5	3,802.1	3.49	-1.56	-3.13
10,348.0	88.30	1.40	6,631.3	3,834.2	11.1	3,834.1	1.82	-0.94	1.56
10,380.0	88.10	1.90	6,632.3	3,866.2	12.0	3,866.1	1.68	-0.63	1.56
10,412.0	88.10	1.20	6,633.4	3,898.2	12.9	3,898.0	2.19	0.00	-2.19
10,444.0	88.10	1.60	6,634.4	3,930.2	13.7	3,930.0	1.25	0.00	1.25
10,476.0	89.80	0.30	6,635.0	3,962.1	14.2	3,962.0	6.69	5.31	-4.06
10,508.0	90.30	359.00	6,635.0	3,994.1	14.0	3,994.0	4.35	1.56	-4.06
10,540.0	90.30	359.40	6,634.8	4,026.1	13.6	4,026.0	1.25	0.00	1.25
10,572.0	90.10	358.90	6,634.7	4,058.1	13.1	4,058.0	1.68	-0.63	-1.56
10,604.0	89.60	359.10	6,634.8	4,090.1	12.5	4,090.0	1.68	-1.56	0.63
10,636.0	89.70	359.40	6,635.0	4,122.1	12.1	4,122.0	0.99	0.31	0.94
10,667.0	89.50	359.10	6,635.2	4,153.1	11.7	4,153.0	1.16	-0.65	-0.97
10,699.0	89.50	359.10	6,635.5	4,185.1	11.2	4,185.0	0.00	0.00	0.00
10,731.0	89.00	357.40	6,635.9	4,217.1	10.2	4,217.0	5.54	-1.56	-5.31
10,763.0	89.20	358.10	6,636.4	4,249.1	9.0	4,248.9	2.27	0.63	2.19
10,795.0	89.00	359.70	6,636.9	4,281.1	8.4	4,280.9	5.04	-0.63	5.00
10,827.0	88.70	0.60	6,637.5	4,313.1	8.4	4,312.9	2.96	-0.94	2.81
10,859.0	89.40	0.90	6,638.1	4,345.1	8.9	4,344.9	2.38	2.19	0.94
10,890.0	89.20	1.30	6,638.5	4,376.0	9.5	4,375.9	1.44	-0.65	1.29
10,922.0	90.20	2.00	6,638.6	4,408.0	10.4	4,407.9	3.81	3.13	2.19
10,954.0	90.10	0.70	6,638.5	4,440.0	11.1	4,439.9	4.07	-0.31	-4.06
10,986.0	90.20	1.70	6,638.5	4,472.0	11.8	4,471.9	3.14	0.31	3.13
11,017.0	90.40	1.80	6,638.3	4,503.0	12.8	4,502.8	0.72	0.65	0.32
11,060.0	90.40	1.80	6,638.0	4,546.0	14.1	4,545.8	0.00	0.00	0.00

<b>Company:</b>	PETROLEUM DEVELOPMENT CORP Weld County CO	<b>Local Co-ordinate Reference:</b>	Well Wilson 14-34H
<b>Project:</b>	SEC.34-T7N-R63W	<b>TVD Reference:</b>	WELL @ 4732.0ft (RKB Ensign 32 - 15')
<b>Site:</b>	Wilson 14-34H Pad Sec.34-T7N-R63W	<b>MD Reference:</b>	WELL @ 4732.0ft (RKB Ensign 32 - 15')
<b>Well:</b>	Wilson 14-34H	<b>North Reference:</b>	True
<b>Wellbore:</b>	Wellbore #1	<b>Survey Calculation Method:</b>	Minimum Curvature
<b>Design:</b>	Wellbore #1	<b>Database:</b>	Landmark

Survey									
Measured Depth (ft)	Inclination (°)	Azimuth (°)	Vertical Depth (ft)	+N/-S (ft)	+E/-W (ft)	Vertical Section (ft)	Dogleg Rate (°/100ft)	Build Rate (°/100ft)	Turn Rate (°/100ft)
BHL 500'FNL, 560'FWL									

Checked By: _____	Approved By: _____	Date: _____
-------------------	--------------------	-------------