

---

# **OXY GRAND JUNCTION EBUSINESS**

---

**Currey 16-02A Currey 16-02A  
BRUSH CREEK  
Mesa County , Colorado**

**Plug to Abandon Service  
09-Apr-2012**

**Job Site Documents**

## The Road to Excellence Starts with Safety

Sold To #: 344034	Ship To #: 2705870	Quote #:	Sales Order #: 9425495
Customer: OXY GRAND JUNCTION EBUSINESS	Customer Rep: Stevens, Rick		
Well Name: Currey 16-02A	Well #: Currey 16-02A	API/UWI #: 05-077-09548	
Field: BRUSH CREEK	City (SAP): PARACHUTE	County/Parish: Mesa	State: Colorado
Lat: N 39.276 deg. OR N 39 deg. 16 min. 34.41 secs.	Long: W 107.884 deg. OR W -108 deg. 6 min. 59.029 secs.		
Contractor: WORKOVER	Rig/Platform Name/Num: WORK OVER		
Job Purpose: Plug to Abandon Service			
Well Type: Development Well	Job Type: Plug to Abandon Service		
Sales Person: PRUETT, BRADLEY	Srv Supervisor: NICKLE, RYON	MBU ID Emp #: 454759	

## Job Personnel

HES Emp Name	Exp Hrs	Emp #	HES Emp Name	Exp Hrs	Emp #	HES Emp Name	Exp Hrs	Emp #
BORSZICH, STEPHEN A	4	412388	HAMMOND, DENNIS C	4	287025	JENSEN, SHANE Lynn	4	441759
NICKLE, RYON	4	454759						

## Equipment

HES Unit #	Distance-1 way	HES Unit #	Distance-1 way	HES Unit #	Distance-1 way	HES Unit #	Distance-1 way
	70 mile	10248065	70 mile	10897797	70 mile	11164590	70 mile
11583934	70 mile						

## Job Hours

Date	On Location Hours	Operating Hours	Date	On Location Hours	Operating Hours	Date	On Location Hours	Operating Hours
4/9/12	4	1						
TOTAL			Total is the sum of each column separately					

## Job

Formation Name	Job Times	Date	Time	Time Zone
Formation Depth (MD) Top Bottom	Called Out	09 - Apr - 2012	16:30	MST
Form Type BHST	On Location	09 - Apr - 2012	20:00	MST
Job depth MD 1490. ft Job Depth TVD 1490. ft	Job Started	09 - Apr - 2012	21:12	MST
Water Depth Wk Ht Above Floor	Job Completed	09 - Apr - 2012	21:45	GMT
Perforation Depth (MD) From To	Departed Loc	09 - Apr - 2012	23:59	MST

## Well Data

Description	New / Used	Max pressure psig	Size in	ID in	Weight lbm/ft	Thread	Grade	Top MD ft	Bottom MD ft	Top TVD ft	Bottom TVD ft
8 5/8" Casing	Unknown		8.625	7.921	32.		J-55	.	1490.	.	1490.
2.375" Tubing	Unknown		2.375	1.995	4.7		J-55	.	1490.	.	1490.

Sales/Rental/3<sup>rd</sup> Party (HES)

Description	Qty	Qty uom	Depth	Supplier
R/A DENSOMETER W/CHART RECORDER, /JOB, ZI	1	JOB		
ADC (AUTO DENSITY CTRL) SYS, /JOB, ZI	1	JOB		
PORT. DATA ACQUIS. W/OPTICEM RT W/HES	1	EA		

## Tools and Accessories

Type	Size	Qty	Make	Depth	Type	Size	Qty	Make	Depth	Type	Size	Qty	Make
Guide Shoe					Packer					Top Plug			
Float Shoe					Bridge Plug					Bottom Plug			
Float Collar					Retainer					SSR plug set			
Insert Float										Plug Container			
Stage Tool										Centralizers			

## Miscellaneous Materials

Gelling Agt	Conc	Surfactant	Conc	Acid Type	Qty	Conc	%
Treatment Fld	Conc	Inhibitor	Conc	Sand Type	Size		

## Fluid Data

Stage/Plug #: 1									
Fluid #	Stage Type	Fluid Name	Qty	Qty uom	Mixing Density lbm/gal	Yield ft <sup>3</sup> /sk	Mix Fluid Gal/sk	Rate bbl/min	Total Mix Fluid Gal/sk
1	Water Spacer		10.00	bbl	8.33	.0	.0	2.0	
2	Tail Cement	PLUGCEM (TM) SYSTEM (452969)	50.0	sacks	15.8	1.15	5.0	1.6	5.0
	5 Gal	FRESH WATER							
3	Displacement		1.00	bbl	8.33	.0	.0	1.6	
Calculated Values		Pressures		Volumes					
Displacement	.5	Shut In: Instant		Lost Returns		Cement Slurry	8	Pad	
Top Of Cement		5 Min		Cement Returns	.5	Actual Displacement	.5	Treatment	
Frac Gradient		15 Min		Spacers	5	Load and Breakdown		Total Job	13.5
Rates									
Circulating		Mixing	1.6	Displacement	1.6	Avg. Job			1.6
Cement Left In Pipe	Amount	0 ft	Reason	Shoe Joint					
Frac Ring # 1 @	ID	Frac ring # 2 @	ID	Frac Ring # 3 @	ID	Frac Ring # 4 @	ID		
The Information Stated Herein Is Correct				Customer Representative Signature					

*The Road to Excellence Starts with Safety*

Sold To #: 344034	Ship To #: 2705870	Quote #:	Sales Order #: 9425495
Customer: OXY GRAND JUNCTION EBUSINESS	Customer Rep: Stevens, Rick		
Well Name: Currey 16-02A	Well #: Currey 16-02A	API/UWI #: 05-077-09548	
Field: BRUSH CREEK	City (SAP): PARACHUTE	County/Parish: Mesa	State: Colorado
Legal Description:			
Lat: N 39.276 deg. OR N 39 deg. 16 min. 34.41 secs.		Long: W 107.884 deg. OR W -108 deg. 6 min. 59.029 secs.	
Contractor: WORKOVER	Rig/Platform Name/Num: WORK OVER		
Job Purpose: Plug to Abandon Service	Ticket Amount:		
Well Type: Development Well	Job Type: Plug to Abandon Service		
Sales Person: PRUETT, BRADLEY	Srv Supervisor: NICKLE, RYON	MBU ID Emp #: 454759	

Activity Description	Date/Time	Cht #	Rate bbl/ min	Volume bbl		Pressure psig		Comments
				Stage	Total	Tubing	Casing	
Call Out	04/09/2012 16:30							HES CEMENTING CREW
Pre-Convoy Safety Meeting	04/09/2012 18:15							ALL HES CEMENTING CREW
Crew Leave Yard	04/09/2012 18:30							
Arrive At Loc	04/09/2012 20:00							WORKOVER RIG CREW AND CO REP WAITING AND READY FOR HES
Assessment Of Location Safety Meeting	04/09/2012 20:05							ALL HES CEMENTING CREW
Other	04/09/2012 20:10							SPOT EQUIPMENT; 1 CEMENTERS F-450, 1 ELITE CEMENTING UNIT, 1 400 BULK TRANSPORT
Start Job	04/09/2012 20:12							PLUG - 1490" IN 8.625" 32# J-80 TUBING - 2 3/8" 126' MUD- 10#
Pre-Rig Up Safety Meeting	04/09/2012 20:20							ALL HES CEMENTING CREW
Rig-Up Equipment	04/09/2012 20:30							
Pre-Job Safety Meeting	04/09/2012 20:55							ALL HES CEMENTING CREW, RIG CREW, COMPANY REPRESENTATIVE AND AVAILABLE 3RD PARTY EE'S ON LOCATION
Pump Water	04/09/2012 21:13		2	4			18.0	FILL LINES / FILL CASING, FRESH WATER
Activity Description	Date/Time	Cht	Rate bbl/ min	Volume bbl		Pressure psig		Comments

Sold To #: 344034

Ship To #: 2705870

Quote #:

Sales Order #:

9425495

SUMMIT Version: 7.3.0021

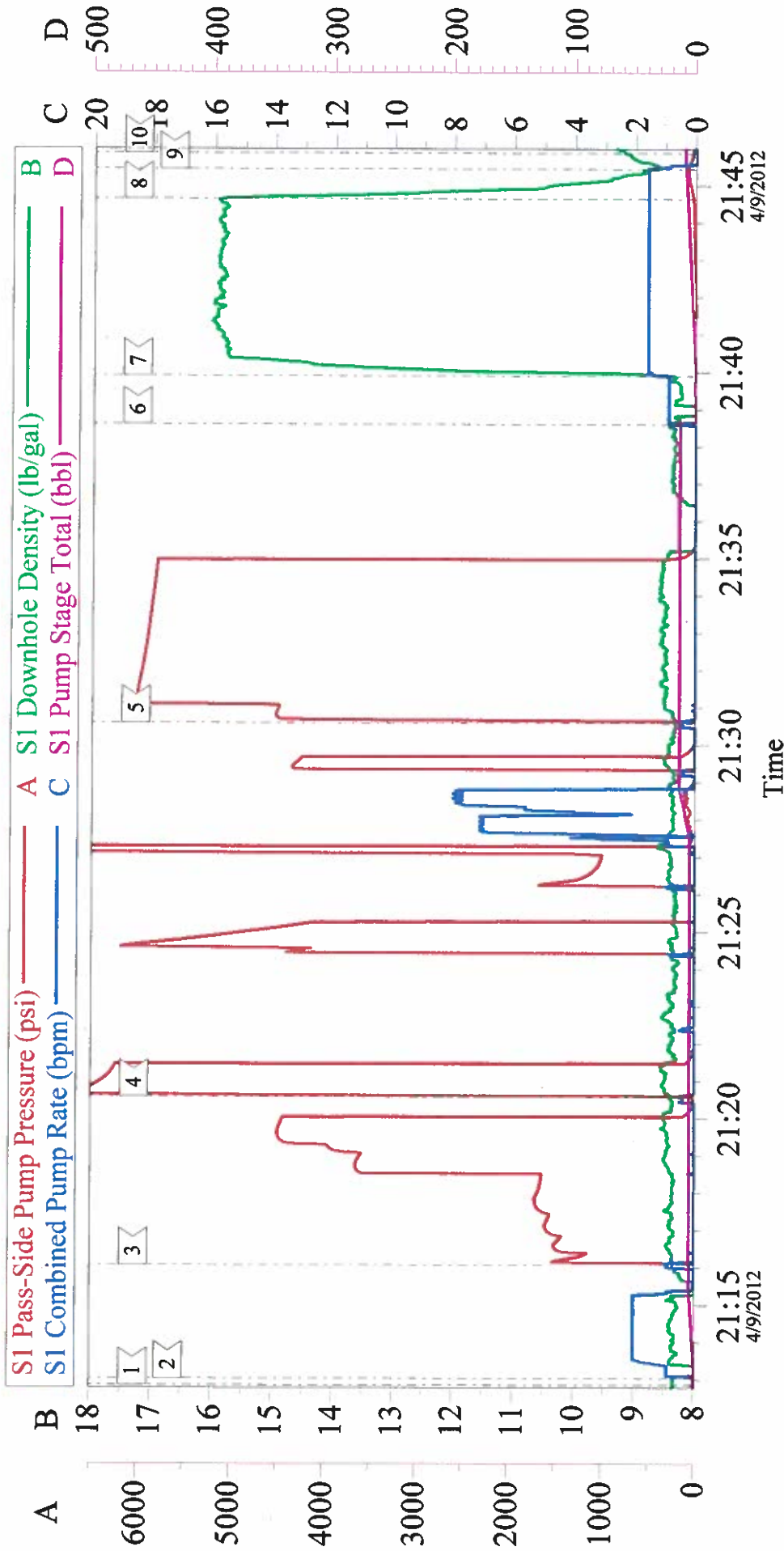
Monday, April 09, 2012 11:58:00

		#		Stage	Total	Tubing	Casing	
Pressure Test	04/09/2012 21:16							PRESSURE TEST TRUCK INITIALLY DID NOT HOLD, ISOLATED TRUCK TO CHECK VALVES, SECONDARY PRESSURE TEST HELD 5863 PSI
Pump Water	04/09/2012 21:38		1	1			9.0	FRESH WATER
Pump Cement	04/09/2012 21:39		1.6	8			68.0	APPX. 40 SKS; 15.8 PPG, 1.5 FT3/SK, 5 GAL/SK
Pump Displacement	04/09/2012 21:44		1.6	1			67.0	BOOST DISPLACEMENT TO ENSURE ENTIRE 8 BBLs MIXED CEMENT WENT INTO CASING, .5 BBLs OF H2O PUMPED TO CLEAR TUBING, DOWNHOLE DENSITY READ 8.48# APPX FOR .5 BBLs
End Job	04/09/2012 21:45							.5 BBLs CEMENT TO SURFACE
Post-Job Safety Meeting (Pre Rig-Down)	04/09/2012 21:50							HES CEMENTING CREW
Rig-Down Equipment	04/09/2012 22:00							
Depart Location Safety Meeting	04/09/2012 23:45							HES CEMENTING CREW
Crew Leave Location	04/09/2012 23:59							THANK YOU FOR USING HALLIBURTON CEMENTING, RYON NICKLE AND CREW



# OXY - CURREY 16-02A

PLUG TO ABANDON



Customer:	OXY GRAND JUNCTION EBUSINESS	Job Date:	09-Apr-2012	Sales Order #:	9425495
Well Description:	Currey 16-02A Currey 16-02A	Job Type:	P.T.A.	ADC Used:	YES
Company Rep:	RICK STEVENS	Cement Supervisor:	RYON NICKLE	Elite # / Operator:	E9 / STEVE BORSZICH