
OXY GRAND JUNCTION EBUSINESS

**CC 697-04-76A
GRAND VALLEY
Garfield County , Colorado**

Cement Surface Casing
07-Apr-2012

Post Job Report

The Road to Excellence Starts with Safety

Sold To #: 344034	Ship To #: 2919840	Quote #:	Sales Order #: 9410061
Customer: OXY GRAND JUNCTION EBUSINESS	Customer Rep: Benevides, Victor		
Well Name: CC	Well #: 697-04-76A	API/UWI #: 05-045-20723	
Field: GRAND VALLEY	City (SAP): ADDISON	County/Parish: Garfield	State: Colorado
Lat: N 39.549 deg. OR N 39 deg. 32 min. 55.824 secs.	Long: W 108.23 deg. OR W -109 deg. 46 min. 11.64 secs.		
Contractor: OXY	Rig/Platform Name/Num: H&P 330		
Job Purpose: Cement Surface Casing			
Well Type: Development Well	Job Type: Cement Surface Casing		
Sales Person: HIMES, JEFFREY	Srvc Supervisor: NICKLE, RYON	MBU ID Emp #: 454759	

Job Personnel

HES Emp Name	Exp Hrs	Emp #	HES Emp Name	Exp Hrs	Emp #	HES Emp Name	Exp Hrs	Emp #
BORSZICH, STEPHEN A	13.5	412388	ENGBERG, KEVIN W	3	454218	JENSEN, SHANE Lynn	13.5	441759
KEANE, JOHN Donovan	13.5	486519	NICKLE, RYON	13.5	454759			

Equipment

HES Unit #	Distance-1 way	HES Unit #	Distance-1 way	HES Unit #	Distance-1 way	HES Unit #	Distance-1 way
	120 mile	10784064	120 mile	10867304	120 mile	10897797	120 mile
10938678	120 mile	10951249	120 mile	10988964	120 mile	10998054	120 mile
11006314	120 mile						

Job Hours

Date	On Location Hours	Operating Hours	Date	On Location Hours	Operating Hours	Date	On Location Hours	Operating Hours
4/7/12	13.5	5						

TOTAL Total is the sum of each column separately

Job

Formation Name	Top	Bottom	Called Out	Date	Time	Time Zone
Formation Depth (MD)			On Location	07 - Apr - 2012	03:00	MST
Form Type		BHST	Job Started	07 - Apr - 2012	08:11	MST
Job depth MD	2770. ft	Job Depth TVD	Job Completed	07 - Apr - 2012	13:38	MST
Water Depth		Wk Ht Above Floor	Departed Loc	07 - Apr - 2012	16:30	MST
Perforation Depth (MD)	From	To				

Well Data

Description	New / Used	Max pressure psig	Size in	ID in	Weight lbm/ft	Thread	Grade	Top MD ft	Bottom MD ft	Top TVD ft	Bottom TVD ft
-------------	------------	-------------------	---------	-------	---------------	--------	-------	-----------	--------------	------------	---------------

Sales/Rental/3rd Party (HES)

Description	Qty	Qty uom	Depth	Supplier
PLUG,CMTG,TOP,9 5/8,HWE,8.16 MIN/9.06 MA	1	EA		

Tools and Accessories

Type	Size	Qty	Make	Depth	Type	Size	Qty	Make	Depth	Type	Size	Qty	Make
Guide Shoe					Packer					Top Plug	9.625	1	HES
Float Shoe					Bridge Plug					Bottom Plug			
Float Collar					Retainer					SSR plug set			
Insert Float										Plug Container	9.625	1	HES
Stage Tool										Centralizers			

Miscellaneous Materials

Gelling Agt	Conc	Surfactant	Conc	Acid Type	Qty	Conc	%
Treatment Fld	Conc	Inhibitor	Conc	Sand Type	Size	Qty	

Fluid Data

Stage/Plug #: 1	Fluid Name	Qty	Qty uom	Mixing Density lbm/gal	Yield ft ³ /sk	Mix Fluid Gal/sk	Rate bbl/min	Total Mix Fluid Gal/sk
Fluid #	Stage Type							

1	Fresh Water Spacer		210.00	bbl	8.33	.0	.0	10	
2	Gel Water Spacer		20.00	bbl	8.34	.0	.0	20	
0.25 gal/bbl		LGC-36 UC, BULK (101582749)							
3	Fresh Water Spacer		10.00	bbl	8.33	.0	.0	10	
4	Lead Cement	HALCEM (TM) SYSTEM (452986)	1190.0	sacks	12.3	2.15	11.83	455.7	11.83
11.83 Gal		FRESH WATER							
5	Tail Cement	VARICEM (TM) CEMENT (452009)	170.0	sacks	12.8	2.07	10.67	62.7	10.67
10.67 Gal		FRESH WATER							
6	Fresh Water Displacement			bbl	8.34	.0	.0	210.5	
7	HalCem Topout	HALCEM (TM) SYSTEM (452986)		sacks	12.5	1.97	10.96	50	10.96
10.96 Gal		FRESH WATER							
Calculated Values		Pressures		Volumes					
Displacement	210.5	Shut In: Instant		Lost Returns		Cement Slurry	518.4	Pad	
Top Of Cement		5 Min		Cement Returns		Actual Displacement	210.4	Treatment	
Frac Gradient		15 Min		Spacers	40	Load and Breakdown		Total Job	769
Rates									
Circulating	RIG	Mixing	6	Displacement	8	Avg. Job	7		
Cement Left In Pipe	Amount	47 ft	Reason	Shoe Joint					
Frac Ring # 1 @	ID	Frac ring # 2 @	ID	Frac Ring # 3 @	ID	Frac Ring # 4 @	ID		
The Information Stated Herein Is Correct				Customer Representative Signature					

The Road to Excellence Starts with Safety

Sold To #: 344034		Ship To #: 2919840		Quote #:		Sales Order #: 9410061	
Customer: OXY GRAND JUNCTION EBUSINESS				Customer Rep: Benevides, Victor			
Well Name: CC			Well #: 697-04-76A			API/UWI #: 05-045-20723	
Field: GRAND VALLEY		City (SAP): ADDISON		County/Parish: Garfield		State: Colorado	
Legal Description:							
Lat: N 39.549 deg. OR N 39 deg. 32 min. 55.824 secs.				Long: W 108.23 deg. OR W -109 deg. 46 min. 11.64 secs.			
Contractor: OXY			Rig/Platform Name/Num: H&P 330				
Job Purpose: Cement Surface Casing						Ticket Amount:	
Well Type: Development Well			Job Type: Cement Surface Casing				
Sales Person: HIMES, JEFFREY			Srvc Supervisor: NICKLE, RYON			MBU ID Emp #: 454759	

Activity Description	Date/Time	Cht #	Rate bbl/min	Volume bbl		Pressure psig		Comments
				Stage	Total	Tubing	Casing	
Call Out	04/06/2012 21:00							HES CEMENT CREW
Pre-Convoy Safety Meeting	04/06/2012 23:15							ALL HES CEMENT CREW
Crew Leave Yard	04/06/2012 23:30							
Arrive At Loc	04/07/2012 02:00							RIG RUNNING CASING
Assessment Of Location Safety Meeting	04/07/2012 02:05							ALL HES CEMENT CREW
Other	04/07/2012 02:20							SPOT EQUIPMENT; 1 CEMENTERS F 550, 1 ELITE PUMPING UNIT, 1 660 BULK TRANSPORT **FREAUHAUF W/ 500 SKS TOPOUT CEMENT BLOWN INTO SILO, 660 W/ 220 SKS LEAD BLOWN INTO SECOND SILO
Pre-Rig Up Safety Meeting	04/07/2012 05:45							ALL HES CEMENT CREW
Pre-Job Safety Meeting	04/07/2012 06:50							ALL HES CEMENT CREW, RIG CREW, COMPANY REP, AVAILABLE 3RD PARTY EE'S
Start Job	04/07/2012 08:11							TD- 2790' TP- 2770' SHOE- 47' OH- 14.75" CASING- 9.625" 36#/FT H-40 MUD- 9.0 PPG
Other	04/07/2012 08:12		2	2			28.0	FILL LINES, FRESH WATER
Activity Description	Date/Time	Cht	Rate bbl/min	Volume bbl		Pressure psig		Comments

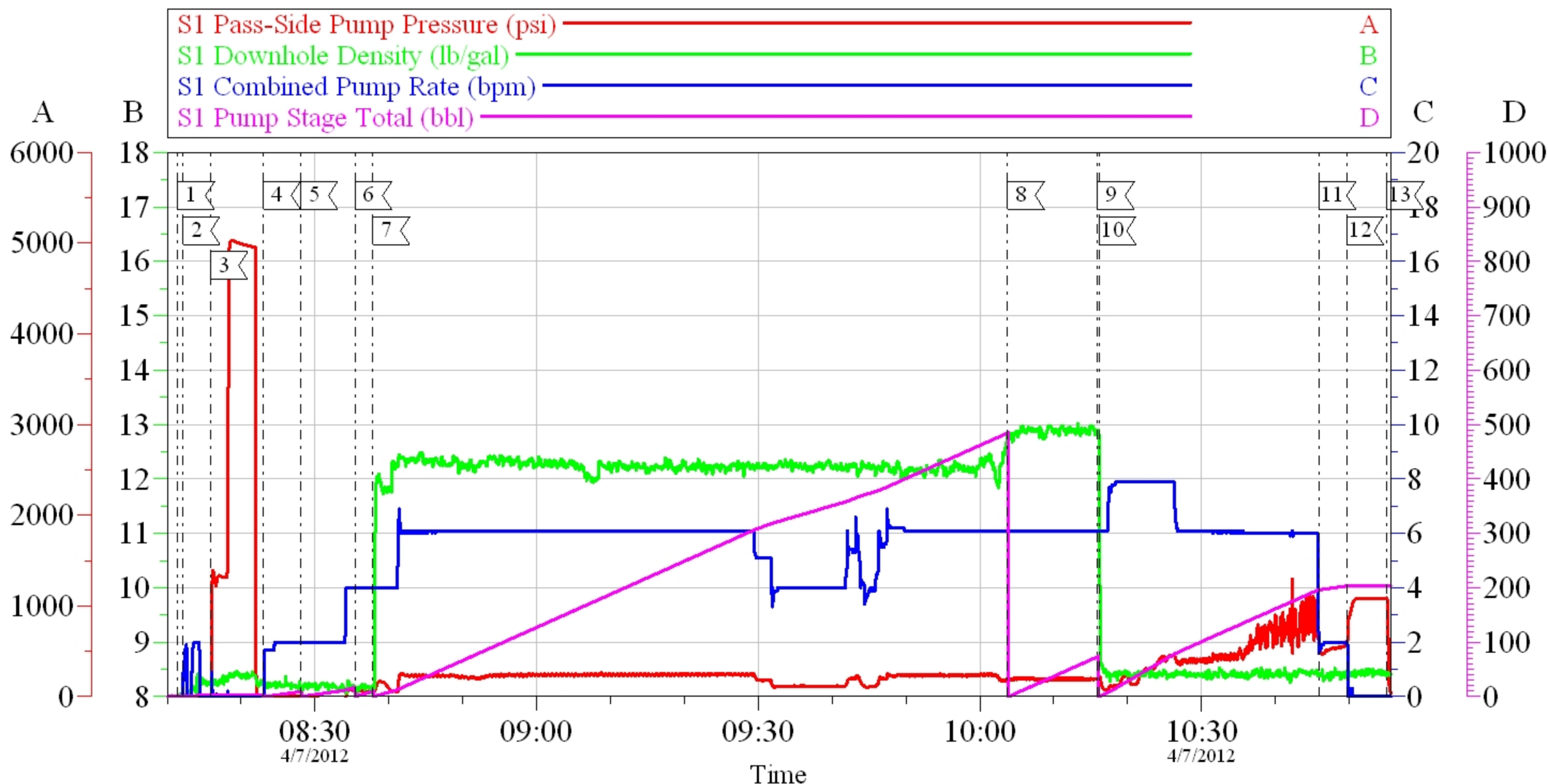
		#		Stage	Total	Tubing	Casing	
Pressure Test	04/07/2012 08:15							STALL OUT @ 1327 PSI, HELD FOR 30 SEC. PRESSURE UP TO 5030 PSI HELD FOR 3 MIN, PRESSURE DROP TO 4997 PSI
Pump Spacer 1	04/07/2012 08:23		2	10			28.0	FRESH WATER
Pump Spacer 2	04/07/2012 08:28		4	20			39.0	GEL
Pump Spacer 1	04/07/2012 08:35		4	10			58.0	FRESH WATER
Pump Lead Cement	04/07/2012 08:37		6	455.7			230.0	1190 SKS; 12.3 PPG, 2.15 FT3/SK, 11.83 GAL/SK
Pump Tail Cement	04/07/2012 10:03		6	62.7			201.0	170 SKS; 12.8 PPG, 2.07 FT3/SK, 11.7510.67 GAL/SK
Drop Top Plug	04/07/2012 10:15							CO REP VERIFIED PLUG LAUNCHED
Pump Displacement	04/07/2012 10:16		8	200.5			1069. 0	FRESH WATER
Slow Rate	04/07/2012 10:45		2	10			589.0	
Bump Plug	04/07/2012 10:49						1087. 0	
Check Floats	04/07/2012 10:55							FLOATS HELD, RETURNED 1 BBLS H2O
Pressure Up	04/07/2012 10:56						1552. 0	CASING TEST PER CO REP
Release Casing Pressure	04/07/2012 11:33							
Other	04/07/2012 11:46		2	10			765.0	PUMP SUGAR WATER, 10# SUGAR MIXED W/ 10 BBLS H2O, THROUGH PARASITE TO CLEAR LINE
Shutdown	04/07/2012 11:53							
Pump Cement	04/07/2012 13:01		2.5	50		118.0		APPX 145 SKS; 12.5 PPG, 1.97 FT3/SK, 10.96 GAL/SK, CEMENT WAS MIXED AND PUMPED SLIGHTLY HEAVY 13- 13.5#, OKAY PER CO REP, 41 BBLS TO TOPOUT WELL, 4 BBLS

Cementing Job Log

Activity Description	Date/Time	Cht #	Rate bbl/ min	Volume bbl		Pressure psig		Comments
				Stage	Total	Tubing	Casing	
Shutdown	04/07/2012 13:36							
End Job	04/07/2012 13:38							PIPE WAS NOT MOVED, GOOD RETURNS UNTIL LAST 40 BBLS OF LEAD CEMENT, DID NOT REGAIN RETURNS, 0 BBLS CEMENT TO SURFACE
Post-Job Safety Meeting (Pre Rig-Down)	04/07/2012 13:45							ALL HES CEMENT CREW; BLEW REMAINING 480 SACKS OF TOPOUT INTO 660'S ON LOCATION. CEMENT RETURNING TO YARD FOR WEIGH BACK.
Pre-Convoy Safety Meeting	04/07/2012 16:15							ALL HES CEMENT CREW
Crew Leave Location	04/07/2012 16:30							THANK YOU FOR USING HALLIBURTON CEMENTING, RYON NICKLE AND CREW

OXY - CC 697-04-76A

OFFLINE SURFACE



Local Event Log

1	START JOB	08:11:26	2	FILL LINES	08:12:09	3	PRESSURE TEST	08:15:56
4	PUMP H2O SPACER	08:23:03	5	PUMP GEL SPACER	08:28:06	6	PUMP H2O SPACER	08:35:25
7	PUMP LEAD CEMENT	08:37:51	8	PUMP TAIL CEMENT	10:03:45	9	DROP TOP PLUG ON FLY	10:15:55
10	PUMP DISPLACEMENT	10:16:08	11	SLOW RATE	10:45:54	12	BUMP PLUG	10:49:39
13	CHECK FLOATS	10:55:06						

Customer: OXY GRAND JUNCTION EBUSINESS
Well Description: CC 697-04-76A
Company Rep: VICTOR BENEVIDES

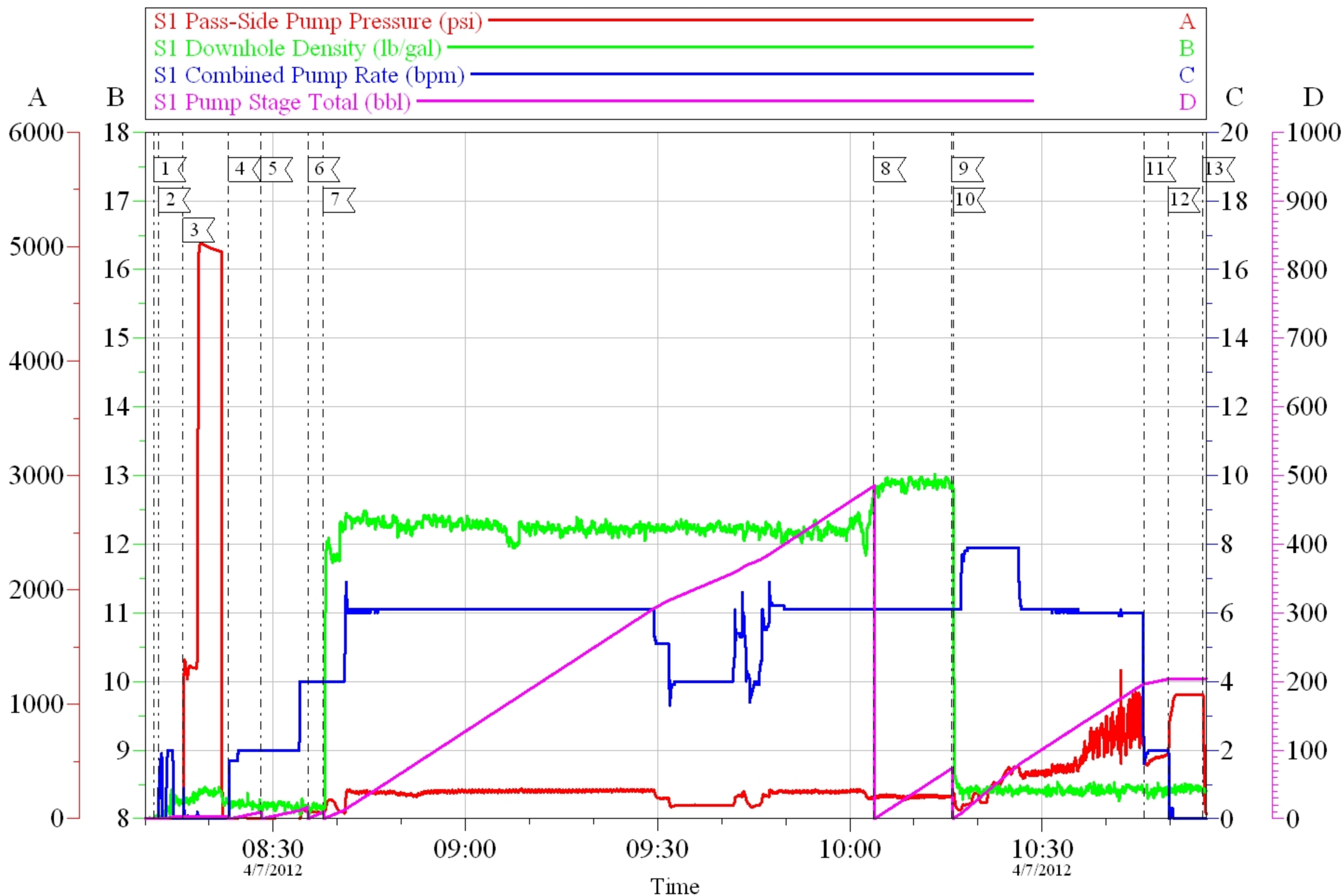
Job Date: 07-Apr-2012
Job Type: SURFACE
Cement Supervisor: RYON NICKLE

Sales Order #: 9410061
ADC Used: YES
Elite # / Operator: E9 / STEVEN BORSZICH

OptiCem v6.4.10
07-Apr-12 12:20

OXY - CC 697-04-76A

OFFLINE SURFACE



Customer: OXY GRAND JUNCTION EBUSINESS
 Well Description: CC 697-04-76A
 Company Rep: VICTOR BENEVIDES

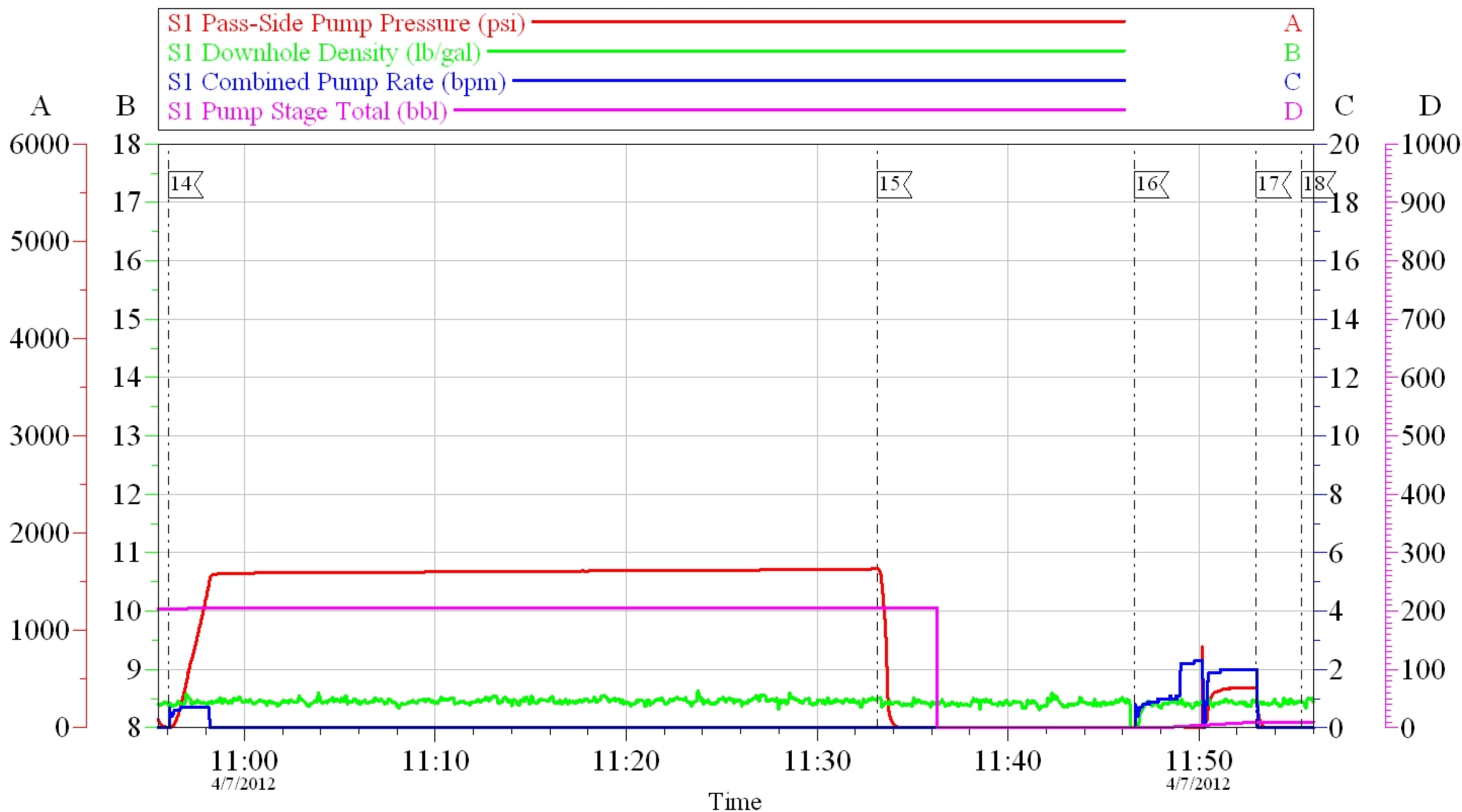
Job Date: 07-Apr-2012
 Job Type: SURFACE
 Cement Supervisor: RYON NICKLE

Sales Order #: 9410061
 ADC Used: YES
 Elite # / Operator: E9 / STEVEN BORSZICH

OptiCem v6.4.10
 07-Apr-12 12:21

OXY - CC 697-04-76A

OFFLINE SURFACE



Local Event Log			
14	PRESSURE UP CASING	10:56:01	15 RELEASE CASING PRESSURE 11:33:10
16	PUMP TO CLEAR PARASITE	11:46:36	17 SHUTDOWN 11:53:00
18	END JOB	11:55:22	

Customer: OXY GRAND JUNCTION EBUSINESS
 Well Description: CC 697-04-76A
 Company Rep: VICTOR BENEVIDES

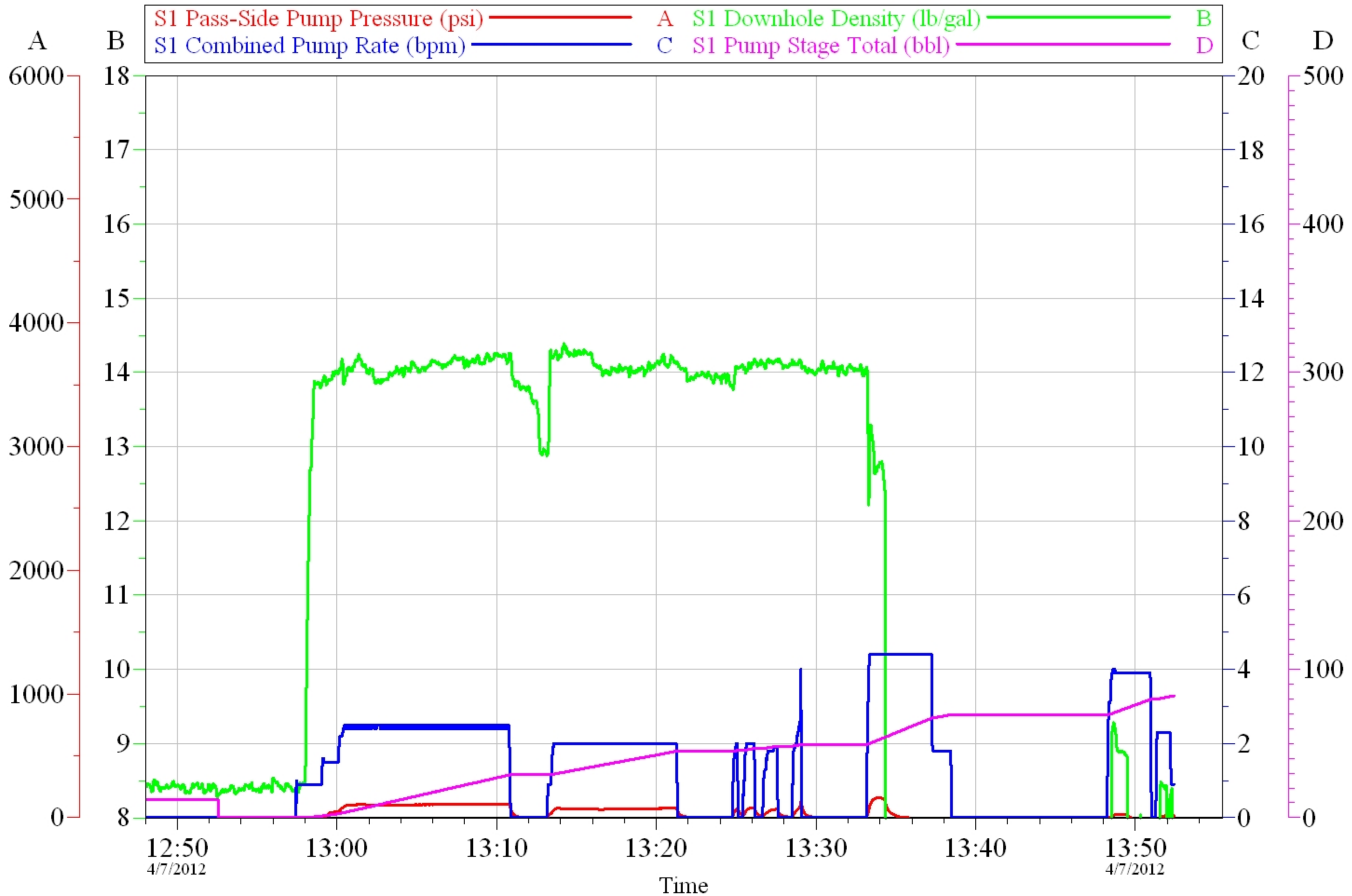
Job Date: 07-Apr-2012
 Job Type: SURFACE
 Cement Supervisor: RYON NICKLE

Sales Order #: 9410061
 ADC Used: YES
 Elite # / Operator: E9 / STEVEN BORSZICH

OptiCem v6.4.10
 07-Apr-12 12:22

OXY - CC 697-04-76A

TOPOUT



Customer: OXY
Well Description: TOPOUT
Company Rep: VICTOR BENEVIDES

Job Date: 07-Apr-2012
Job Type: TOPOUT
Cement Supervisor: RYON NICKLE

Sales Order #: 9410061
ADC Used: YES
Elite # / Operator: E9 / STEVEN BORSZICH

OptiCem v6.4.10
07-Apr-12 14:53

HALLIBURTON

Water Analysis Report

Company: OXY

Submitted by: RYON NICKLE

Attention: LAB

Lease H&P 330

Well # CC 697-04-76A

Date: 4/6/2012

Date Rec.: 4/6/2012

S.O.# 9410061

Job Type: SURFACE

Specific Gravity	<i>MAX</i>	1
pH	<i>8</i>	7
Potassium (K)	<i>5000</i>	0 Mg / L
Hrdness	<i>500</i>	330 Mg / L
Iron (FE2)	<i>300</i>	0 Mg / L
Chlorides (Cl)	<i>3000</i>	500 Mg / L
Sulfates (SO ₄)	<i>1500</i>	<200 Mg / L
Temp	<i>40-80</i>	42 Deg
Total Dissolved Solids		460 Mg / L

Respectfully: RYON NICKLE

Title: CEMENTING SUPERVISOR

Location: Grand Junction, CO

NOTICE: This report is limited to the described sample tested. Any person using or relying on this report agrees that Halliburton shall not be liable for any loss or damage whether due to act or omission resulting from such report or it

Sales Order #: 9410061	Line Item: 10	Survey Conducted Date: 4/7/2012
Customer: OXY GRAND JUNCTION EBUSINESS		Job Type (BOM): CMT SURFACE CASING BOM
Customer Representative: DARRYL		API / UWI: (leave blank if unknown) 05-045-20723
Well Name: CC		Well Number: 697-04-76A
Well Type: Development Well	Well Country: United States of America	
H2S Present:	Well State: Colorado	Well County: Garfield

Dear Customer,

We hope that you were satisfied with the service quality of this job performed by Halliburton. It is the aim of our management and service personnel to deliver equipment and service of a standard unmatched in the service sector of the energy industry.

Please take the time to let us know if our performance met with your satisfaction. Please be as critical as possible to ensure we constantly improve our service. Your comments are of great value to us and are intended for the exclusive use of Halliburton.

CUSTOMER SATISFACTION SURVEY

CATEGORY	CUSTOMER SATISFACTION RESPONSE	
Survey Conducted Date	The date the survey was conducted	4/7/2012
Survey Interviewer	The survey interviewer is the person who initiated the survey.	RYON NICKLE (HB22175)
Customer Participation	Did the customer participate in this survey? (Y/N)	Yes
Customer Representative	Enter the Customer representative name	DARRYL
HSE	Was our HSE performance satisfactory? Circle Y or N	Yes
Equipment	Were you satisfied with our Equipment? Circle Y or N	Yes
Personnel	Were you satisfied with our people? Circle Y or N	Yes
Customer Comment	Customer's Comment	

CUSTOMER SIGNATURE

Sales Order #: 9410061	Line Item: 10	Survey Conducted Date: 4/7/2012
Customer: OXY GRAND JUNCTION EBUSINESS		Job Type (BOM): CMT SURFACE CASING BOM
Customer Representative: DARRYL		API / UWI: (leave blank if unknown) 05-045-20723
Well Name: CC		Well Number: 697-04-76A
Well Type: Development Well	Well Country: United States of America	
H2S Present:	Well State: Colorado	Well County: Garfield

KEY PERFORMANCE INDICATORS

General	
Survey Conducted Date The date the survey was conducted	4/7/2012

Cementing KPI Survey	
Type of Job Select the type of job. (Cementing or Non-Cementing)	0
Select the Maximum Deviation range for this Job What is the highest deviation for the job you just completed? This may not be the maximum well deviation.	Vertical
Total Operating Time (hours) Total Operating Hours Including Rig-up, Pumping, Rig-down. Enter in decimal format.	7
HSE Incident, Accident, Injury HSE Incident, Accident, Injury. This should be recordable incidents only.	No
Was the job purpose achieved? Was the job delivered correctly as per customer agreed design?	Yes
Operating Hours (Pumping Hours) Total number of hours pumping fluid on this job. Enter in decimal format.	5
Customer Non-Productive Rig Time (hrs) Lost time due to Halliburton in the start, execution, or completion of an ordered service or product, or delays in a follow-on service. Enter in decimal format. 0 if none.	0
Type of Rig Classification Job Was Performed Type Of Rig (classification) Job Was Performed On	Drilling Rig (Portable)
Number Of JSAs Performed Number Of Jsas Performed	5
Number of Unplanned Shutdowns Unplanned shutdown is when injection stops for any period of time.	0
Was this a Primary Cement Job (Yes / No)	Yes

Sales Order #: 9410061	Line Item: 10	Survey Conducted Date: 4/7/2012
Customer: OXY GRAND JUNCTION EBUSINESS		Job Type (BOM): CMT SURFACE CASING BOM
Customer Representative: DARRYL		API / UWI: (leave blank if unknown) 05-045-20723
Well Name: CC		Well Number: 697-04-76A
Well Type: Development Well	Well Country: United States of America	
H2S Present:	Well State: Colorado	Well County: Garfield

Primary Cement Job= Casing job, Liner job, or Tie-back job.	
Did We Run Wiper Plugs? Did We Run Top And Bottom Casing Wiper Plugs?	Top
Mixing Density of Job Stayed in Designed Density Range (0-100%) Density Range defined as +/- .20 ppg. Calculation: Total BBLs cement mixed at designed density divided by total BBLs of cement multiplied by 100	95
Was Automated Density Control Used? Was Automated Density Control (ADC) Used ?	Yes
Pump Rate (percent) of Job Stayed At Designed Pump Rate Pump Rate range defined as +/- 1bbl/min. Calculation: Total BBLs of fluid pumped at the designed rate divided by Total BBLs of fluid pumped, multiplied by 100	95
Nbr of Remedial Sqz Jobs Rqd - Competition Number Of Remedial Squeeze Jobs Required After Primary Job Performed By Competition	0
Nbr of Remedial Plug Jobs Rqd - HES Number Of Remedial Plug Jobs Needed After Primary Plug Pumped By HES	0
Nbr of Remedial Sqz Jobs Rqd - HES Number Of Remedial Squeeze Jobs Required After Primary Job Performed By HES	0