
WILLIAMS PRODUCTION RMT INC - EBUS

**GM 322-23
GRAND VALLEY
Garfield County , Colorado**

Cement Surface Casing
31-Aug-2011

Job Site Documents

The Road to Excellence Starts with Safety

Sold To #: 300721	Ship To #: 2873274	Quote #:	Sales Order #: 8407653
Customer: WILLIAMS PRODUCTION RMT INC - EBUS	Customer Rep: Klatt, Brian		
Well Name: GM	Well #: 322-23	API/UWI #: 05-045-20469	
Field: GRAND VALLEY	City (SAP): PARACHUTE	County/Parish: Garfield	State: Colorado
Lat: N 39.506 deg. OR N 39 deg. 30 min. 22.68 secs.	Long: W 108.083 deg. OR W -109 deg. 55 min. 0.772 secs.		
Contractor: NABORS 576	Rig/Platform Name/Num: NAB 576		
Job Purpose: Cement Surface Casing			
Well Type: Development Well	Job Type: Cement Surface Casing		
Sales Person: KOHL, KYLE	Srv Supervisor: TRIPLETT, MICHEAL	MBU ID Emp #: 447908	

Job Personnel

HES Emp Name	Exp Hrs	Emp #	HES Emp Name	Exp Hrs	Emp #	HES Emp Name	Exp Hrs	Emp #
BANKS, BRENT A	7	371353	NICKLE, RYON	7	454759	STILLSON, ERIC W	7	393789
TRIPLETT, MICHEAL Anthony	77	447908						

Equipment

HES Unit #	Distance-1 way	HES Unit #	Distance-1 way	HES Unit #	Distance-1 way	HES Unit #	Distance-1 way
10867531	60 mile	10872429	60 mile	10951246	60 mile	10989685	60 mile
11360883	60 mile						

Job Hours

Date	On Location Hours	Operating Hours	Date	On Location Hours	Operating Hours	Date	On Location Hours	Operating Hours
08/31/2011	7	1						

TOTAL Total is the sum of each column separately

Job

Job Times

Formation Name	Top	Bottom	Called Out	Date	Time	Time Zone
Formation Depth (MD)			On Location	31 - Aug - 2011	07:30	MST
Form Type		BHST	Job Started	31 - Aug - 2011	11:30	MST
Job depth MD	1017. ft	Job Depth TVD	Job Completed	31 - Aug - 2011	16:36	MST
Water Depth		Wk Ht Above Floor	Departed Loc	31 - Aug - 2011	17:20	MST
Perforation Depth (MD)	From	To		31 - Aug - 2011	18:15	MST

Well Data

Description	New / Used	Max pressure psig	Size in	ID in	Weight lbm/ft	Thread	Grade	Top MD ft	Bottom MD ft	Top TVD ft	Bottom TVD ft
-------------	------------	-------------------	---------	-------	---------------	--------	-------	-----------	--------------	------------	---------------

Sales/Rental/3rd Party (HES)

Description	Qty	Qty uom	Depth	Supplier
PLUG,CMTG,TOP,9 5/8,HWE,8.16 MIN/9.06 MA	1	EA		

Tools and Accessories

Type	Size	Qty	Make	Depth	Type	Size	Qty	Make	Depth	Type	Size	Qty	Make
Guide Shoe					Packer					Top Plug			
Float Shoe					Bridge Plug					Bottom Plug			
Float Collar					Retainer					SSR plug set			
Insert Float										Plug Container			
Stage Tool										Centralizers			

Miscellaneous Materials

Gelling Agt	Conc	Surfactant	Conc	Acid Type	Qty	Conc	%
Treatment Fld	Conc	Inhibitor	Conc	Sand Type	Size	Qty	

Fluid Data

Stage/Plug #: 1	Fluid Name	Qty	Qty uom	Mixing Density lbm/gal	Yield ft/sk	Mix Fluid Gal/sk	Rate bbl/min	Total Mix Fluid Gal/sk
Fluid #	Stage Type							

Stage/Plug #: 1									
Fluid #	Stage Type	Fluid Name	Qty	Qty uom	Mixing Density lbm/gal	Yield ft ³ /sk	Mix Fluid Gal/sk	Rate bbl/min	Total Mix Fluid Gal/sk
1	Water Spacer		20.00	bbl	8.34	.0	.0	.0	
2	Tail Cement	VERSACEM (TM) SYSTEM (452010)	275.0	sacks	12.8	2.11	11.75		11.75
		11.75 Gal FRESH WATER							
3	Displacement Fluid		75.00	bbl	8.34	.0	.0	.0	
Calculated Values		Pressures		Volumes					
Displacement	75.4	Shut In: Instant		Lost Returns	0	Cement Slurry	103.3	Pad	
Top Of Cement	SURFACE	5 Min		Cement Returns	20	Actual Displacement		Treatment	
Frac Gradient		15 Min		Spacers	20	Load and Breakdown		Total Job	199
Rates									
Circulating	12	Mixing	8	Displacement	10	Avg. Job			10
Cement Left In Pipe	Amount	43.60 ft	Reason	Shoe Joint					
Frac Ring # 1 @	ID	Frac ring # 2 @	ID	Frac Ring # 3 @	ID	Frac Ring # 4 @	ID		
The Information Stated Herein Is Correct				Customer Representative Signature					

The Road to Excellence Starts with Safety

Sold To #: 300721	Ship To #: 2873274	Quote #:	Sales Order #: 8407653
Customer: WILLIAMS PRODUCTION RMT INC - EBUS	Customer Rep: Klatt, Brian		
Well Name: GM	Well #: 322-23	API/UWI #: 05-045-20469	
Field: GRAND VALLEY	City (SAP): PARACHUTE	County/Parish: Garfield	State: Colorado
Legal Description:			
Lat: N 39.506 deg. OR N 39 deg. 30 min. 22.68 secs.		Long: W 108.083 deg. OR W -109 deg. 55 min. 0.772 secs.	
Contractor: NABORS 576	Rig/Platform Name/Num: NAB 576		
Job Purpose: Cement Surface Casing	Ticket Amount:		
Well Type: Development Well	Job Type: Cement Surface Casing		
Sales Person: KOHL, KYLE	Srv Supervisor: TRIPLETT, MICHEAL	MBU ID Emp #: 447908	

Activity Description	Date/Time	Cht #	Rate bbl/min	Volume bbl		Pressure psig		Comments
				Stage	Total	Tubing	Casing	
Call Out	08/31/2011 07:30							
Pre-Convoy Safety Meeting	08/31/2011 10:00							
Crew Leave Yard	08/31/2011 10:15							
Arrive At Loc	08/31/2011 11:30							RIG WAS RUNNING CASING. CREW WAITED OFF LOCATION TIL DONE.
Assessment Of Location Safety Meeting	08/31/2011 11:35							
Other	08/31/2011 12:04							SPOT EQUIPMENT, 1 RCM PUMP, 1 660
Pre-Rig Up Safety Meeting	08/31/2011 15:15							GO OVER JSA AND HAVE CREW SIGN.
Rig-Up Equipment	08/31/2011 15:30							
Pre-Job Safety Meeting	08/31/2011 16:15							GO OVER JOB PROCEDURES AND SAFETY INFORMATION.
Start Job	08/31/2011 16:37							TD:1017', TP:1002', SJ:43.60', MW:10.0, CASING: 9.625 32.3#, OH: 13.5".
Test Lines	08/31/2011 16:38						3000	PRESSURE TEST PUMPS AND LINES STARTED AT 3567 PSI AND ENDED AT 3553 PSI AND LOST 14 PSI IN 2 MINUTES.

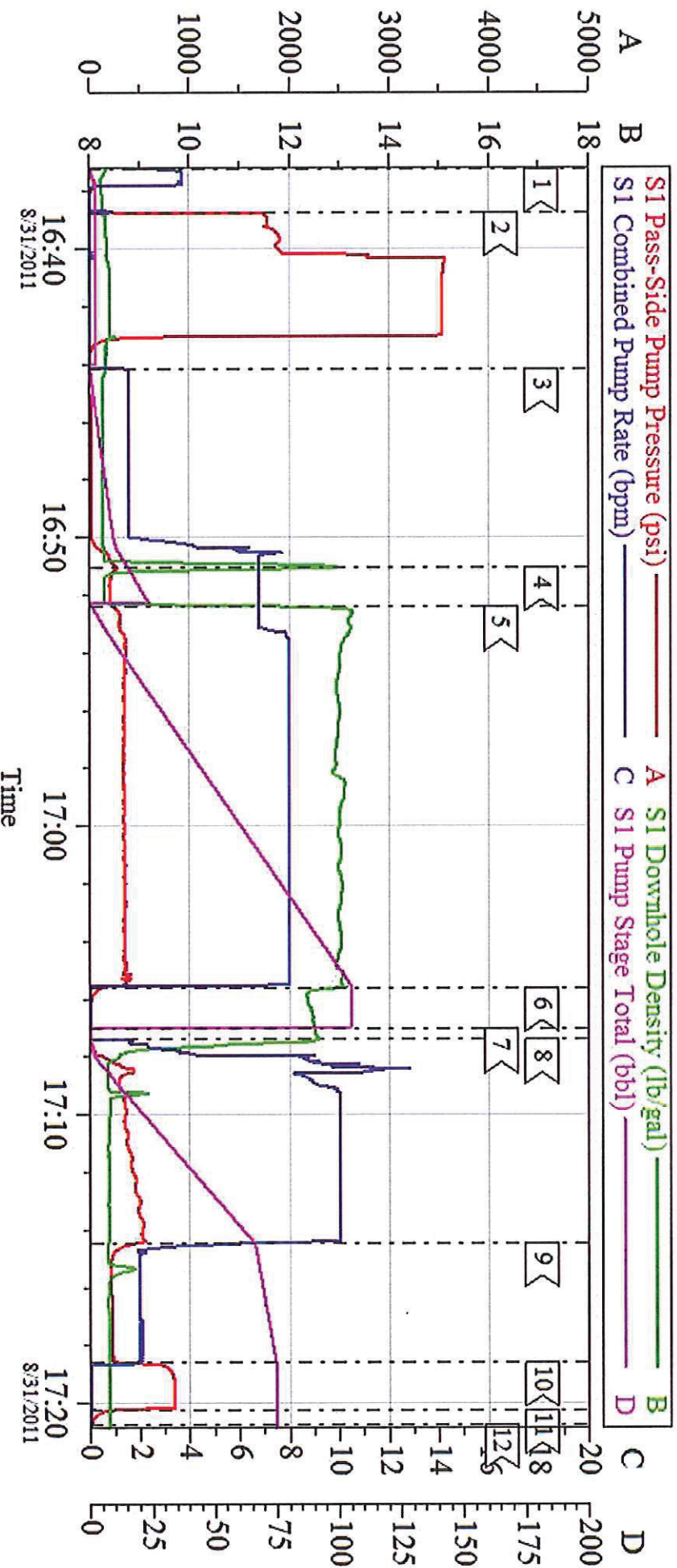
Cementing Job Log

Pump Spacer	08/31/2011 16:44		4	20	20		221	FRESH WATER, OPERATOR WENT TO CEMENT BEFORE FULL SPACER WAS GONE AND THEN WENT BACK TO SPACER.
Activity Description	Date/Time	Cht #	Rate bbl/ min	Volume bbl		Pressure psig		Comments
				Stage	Total	Tubing	Casing	
Pump Tail Cement	08/31/2011 16:52		8	103.3	123.3		360	275 SACKS MIXED @ 12.8, 2.11 YIELD, 11.77 GAL/SACK,
Shutdown	08/31/2011 17:05							
Drop Top Plug	08/31/2011 17:07							VERIFY PLUG LEFT
Pump Displacement	08/31/2011 17:08		10	75.4	198.7		550	FRESHWATER
Slow Rate	08/31/2011 17:14		2	65.4	188.7		237	SLOWED RATE LAST 10BBLs PRIOR TO BUMPING PLUG.
Bump Plug	08/31/2011 17:18						260	BUMP PLUG AND WENT 600PSI OVER TO 850PSI
Check Floats	08/31/2011 17:20							FLOATS HELD, GOT 1.5 BBLs BACK TO TRUCK.
End Job	08/31/2011 17:21							HAD GOOD CIRCULATION THROUGHOUT JOB. GOT CEMENT BACK WITH 55 BBLs OF DISPLACEMENT AWAY, GOT 20 BBLs OF CEMENT TO SURFACE
Post-Job Safety Meeting (Pre Rig-Down)	08/31/2011 17:25							
Rig-Down Equipment	08/31/2011 17:30							
Pre-Convoy Safety Meeting	08/31/2011 18:10							
Crew Leave Location	08/31/2011 18:15							THANKS FOR USING HALLIBURTON MIKE TRIPLETT AND CREW

EVENT #	EVENT	VOLUME	SACKS	WEIGHT	YIELD	GAL/ SK
1	Start Job		5080 <u>Max Psi</u>			
6	Test Lines	2000.0				
9	H2O Spacer	20.0				
13	Lead Cement	88.6	275	12.7	1.81	9.63
15	Tail Cement	144.4	575	12.8	1.41	6.43
22	Drop Plug					
23	Displace with H2O	127.7				
23	SLOW RATE	117.7				
26	BUMP PLUG	1741 PSI				
2	Release Psi / Job Over	2241 PSI	500 OVER			
			Do Not Overdisplace			
DISPLACEMENT	TOTAL PIPE	SHOE JOINT LENGTH	FLOAT COLLAR	BBL/FT	H2O REQ.	
127.70	8266.33	28.40	8237.93	0.0406	220	
PSI to Lift Pipe	N/A	<u>*****Use Mud Scales on Each Tier*****</u>				
Total Displacement	127.70					
CALCULATED DIFFERENTIAL PSI		224	TOTAL FLUID PUMPED		381	
Collapse	6350	Burst	7780		SO#	7797989

WILLIAMS

SURFACE GM 322-23



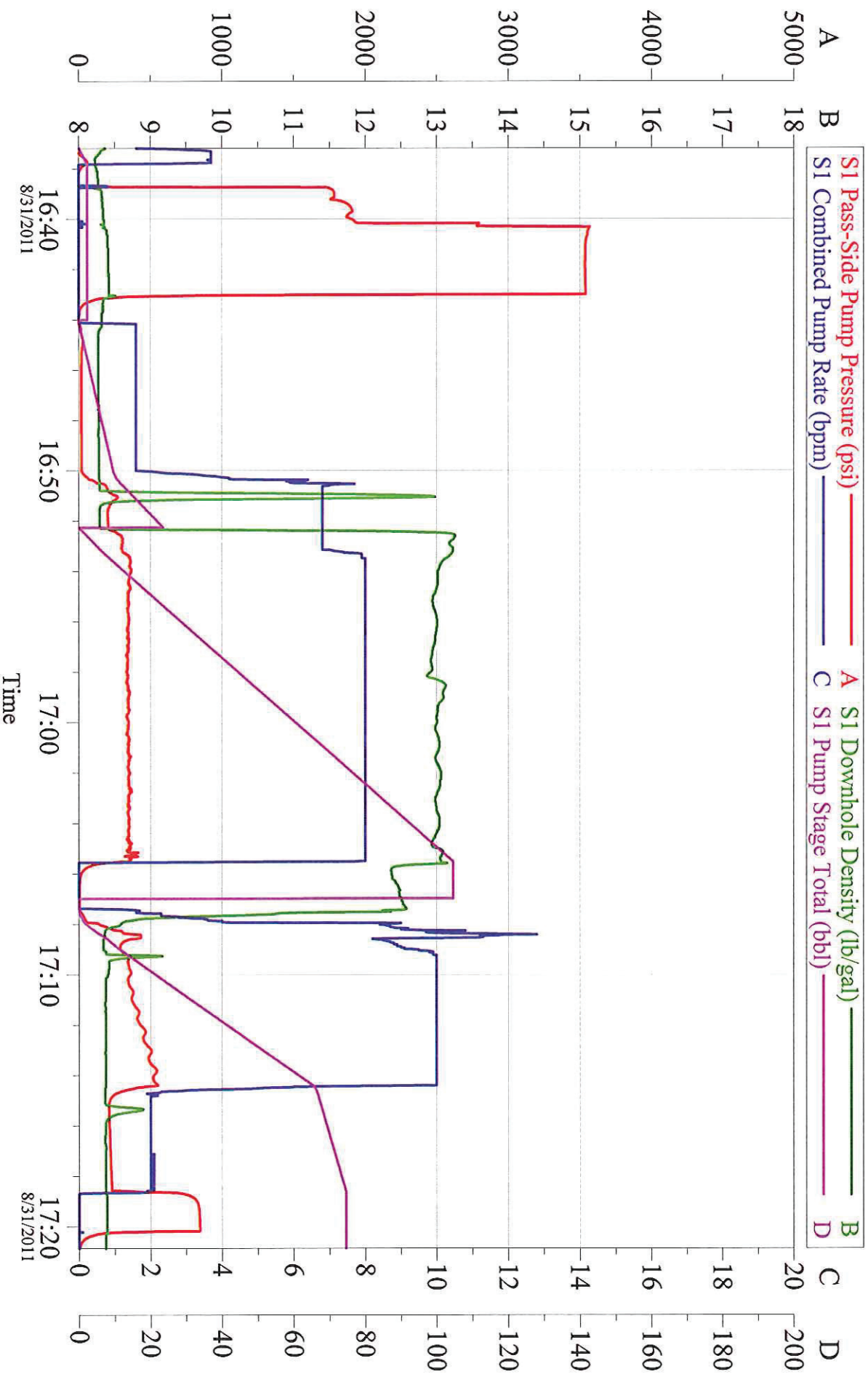
Customer: WILLIAMS
Well Description: GM 322-23
ADC USED: YES

Job Date: 31-Aug-2011
Job Type: SURFACE
Service Supervisor: MIKE TRIPLETT

Sales Order #: 8407653
Company Rep: BRIAN KLATT
Elite/Operator: 7/ RYON NICKLE

OptiCem v6.4.9
31-Aug-11 17:27

WILLIAMS SURFACE GM 322-23



Customer:	WILLIAMS	Job Date:	31-Aug-2011	Sales Order #:	8407653
Well Description:	GM 322-23	JOB TYPE:	SURFACE	COMPANY REP:	BRIAN KLATT
ADC USED:	YES	SERVICE SUPERVISOR:	MIKE TRIPLETT	ELITE/OPERATER	7/ RYON NICKLE