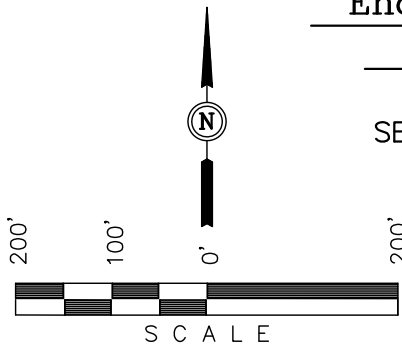


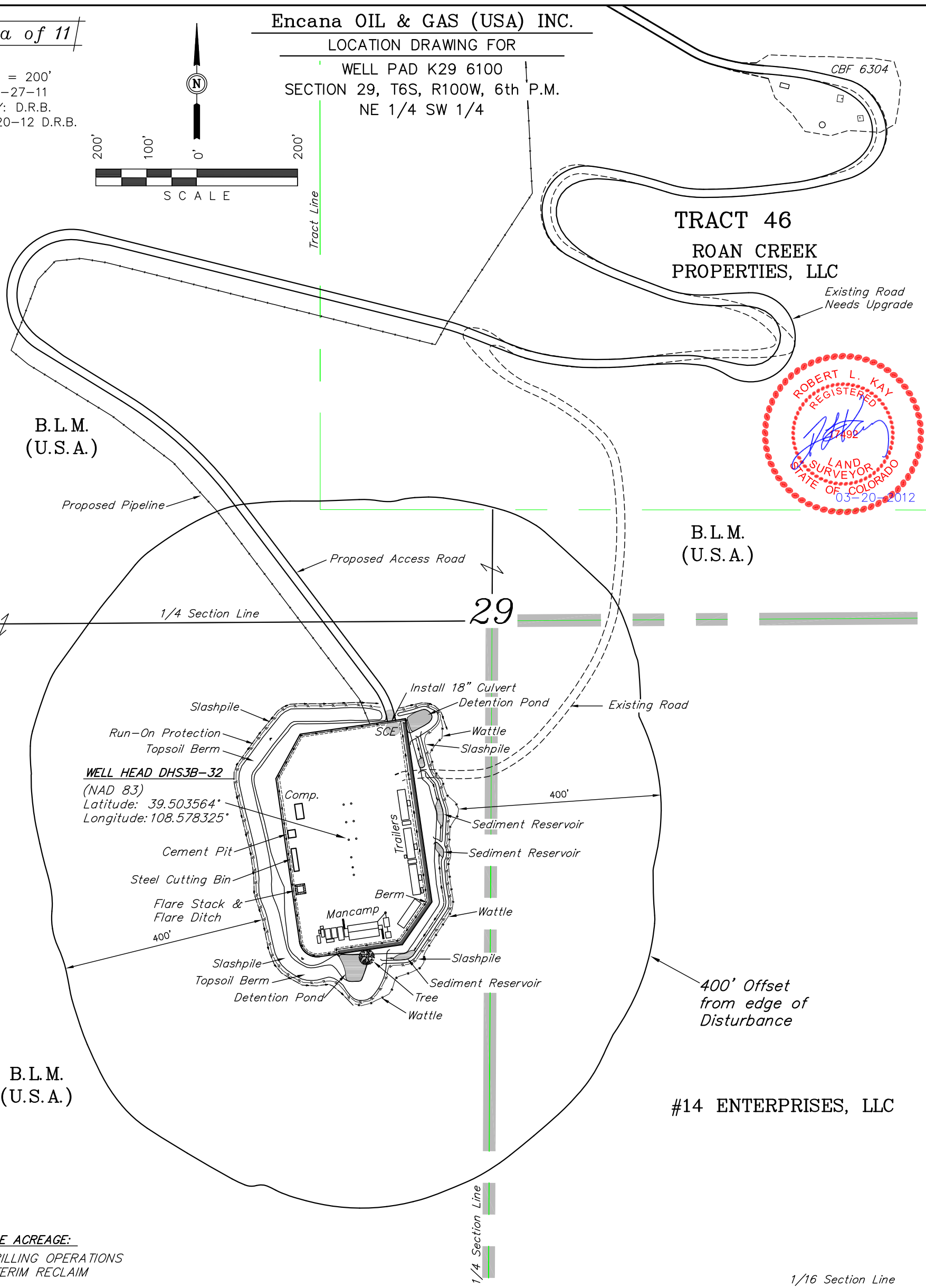
SCALE: 1" = 200'
DATE: 01-27-11
DRAWN BY: D.R.B.
Revised: 03-20-12 D.R.B.



Encana OIL & GAS (USA) INC.

LOCATION DRAWING FOR

WELL PAD K29 6100
SECTION 29, T6S, R100W, 6th P.M.
NE 1/4 SW 1/4



DISTURBANCE ACREAGE:

2.606 ± DRILLING OPERATIONS
1.509 ± INTERIM RECLAIM

CURRENT LAND USE

CROP LAND: ☐ IRRIGATED ☐ DRY LAND ☐ IMPROVED PASTURE ☐ HAY MEADOW ☐ CRP
NON-CROP LAND: ☒ RANGELAND ☐ TIMBER ☐ RECREATIONAL ☐ OTHER (Describe)
SUBDIVIDED: ☐ INDUSTRIAL ☐ COMMERCIAL ☐ RESIDENTIAL

FUTURE LAND USE

CROP LAND: ☐ IRRIGATED ☐ DRY LAND ☐ IMPROVED PASTURE ☐ HAY MEADOW ☐ CRP
NON-CROP LAND: ☒ RANGELAND ☐ TIMBER ☐ RECREATIONAL ☐ OTHER (Describe)
SUBDIVIDED: ☐ INDUSTRIAL ☐ COMMERCIAL ☐ RESIDENTIAL

PLANT COMMUNITY

☐ DISTURBED GRASSLAND
☐ NATIVE GRASSLAND
☐ SHRUB LAND
☐ PLAINS RIPARIAN
☐ MOUNTAIN RIPARIAN
☒ FOREST LAND
☐ WETLANDS AQUATIC
☐ ALPINE
☐ OTHER (Describe):

Existing Features

(Distance from DHS3B-32)

Building	N85°E 24,655'
Public Road	N73°E 6,824'
Property Line	EAST 281'
Utility	N87°E 18,064'
Surface Water	S51°E 4218'
Railroad	S54°E 22.22 Miles