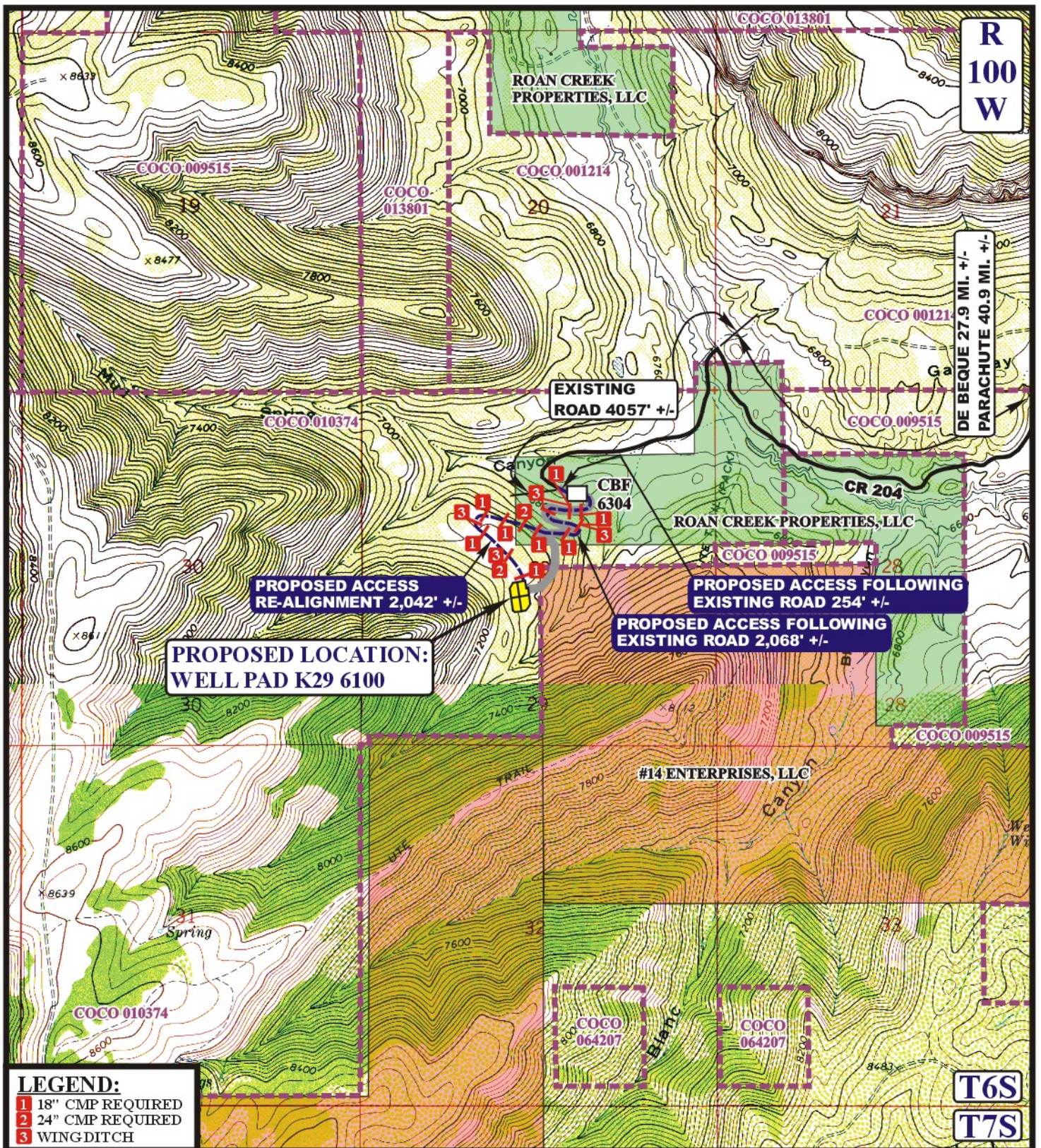


Encana OIL & GAS (USA) INC.
WELL PAD K29 6100
SECTION 29, T6S, R100W, 6th P.M.

PROCEED IN A SOUTHWESTERLY DIRECTION ON 1-70 FROM PARACHUTE, COLORADO APPROXIMATELY 13.0 MILES. EXIT I-70 AND TURN RIGHT ON THE ROAN CREEK ROAD (COUNTY ROAD 204) IN A NORTHERLY, THEN NORTHWESTERLY DIRECTION APPROXIMATELY 27.9 MILES TO THE JUNCTION OF THIS ROAD AND AN EXISTING ROAD TO THE SOUTHWEST; TURN LEFT AND PROCEED IN A SOUTHWESTERLY DIRECTION APPROXIMATELY 4,057' TO THE BEGINNING OF THE PROPOSED ACCESS ROAD TO THE SOUTHEAST; FOLLOW ROAD FLAGS IN A SOUTHEASTERLY DIRECTION ALONG AN EXISTING ROAD APPROXIMATELY 254' TO THE CBF 6304 LOCATION; FOLLOW ROAD FLAGS IN A SOUTHEASTERLY, THEN WESTERLY, THEN SOUTHEASTERLY, THEN WESTERLY DIRECTION ALONG AN EXISTING ROAD APPROXIMATELY 2,068; FOLLOW ROAD FLAGS IN A NORTHWESTERLY, THEN SOUTHEASTERLY DIRECTION APPROXIMATELY 2,042' TO THE PROPOSED LOCATION.

TOTAL DISTANCE FROM PARACHUTE, COLORADO TO THE PROPOSED WELL LOCATION IS APPROXIMATELY 42.5 MILES.





LEGEND:

- 1 18" CMP REQUIRED
- 2 24" CMP REQUIRED
- 3 WING DITCH

LEGEND:

EXISTING ROAD
 PROPOSED ACCESS



EnCana OIL & GAS (USA) INC.

WELL PAD K29 6100
SECTION 29, T6S, R100W, 6th P.M.
NE 1/4 SW 1/4

SHEET 9 OF 11



Uintah Engineering & Land Surveying
 85 South 200 East Vernal, Utah 84078
 (435) 789-1017 * FAX (435) 789-1813

ACCESS ROAD
MAP

02 09 12
 MONTH DAY YEAR

SCALE: 1" = 2000' **DRAWN BY: J.L.G.** **REVISED: 04-02-12**

B
TOPO