

Encana OIL & GAS (USA) INC.

ADDENDUM TO LEGAL PLAT FOR

WELL PAD K29 6100

SECTION 29, T6S, R100W, 6th P.M.

NE 1/4 SW 1/4

50 25 0 50



SCALE

Sheet 1a of 11



SCALE: 1" = 50'

DATE: 01-27-12

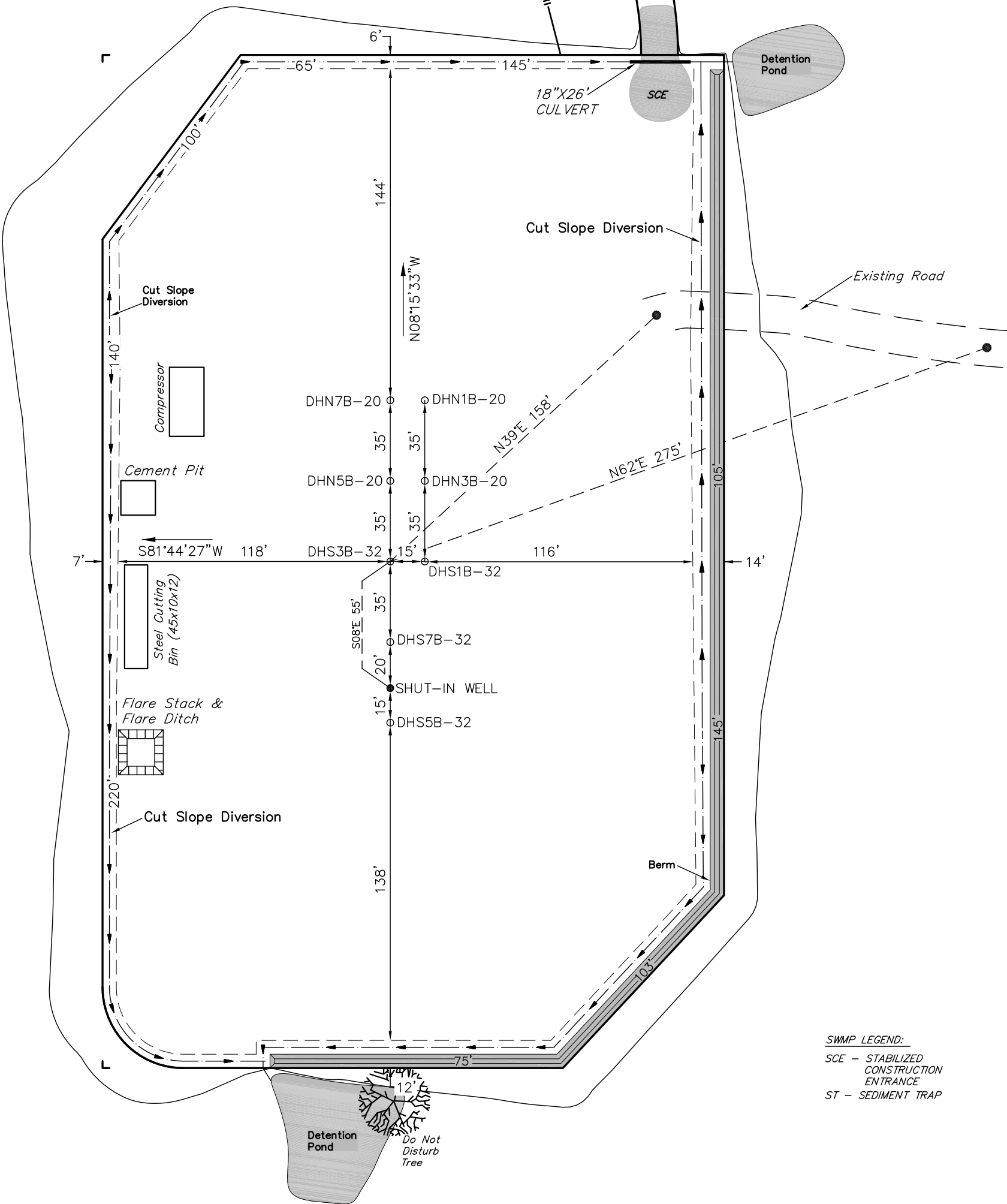
DRAWN BY: D.R.B.

Revised: 03-20-12 D.R.B.



Proposed Access Road

Proposed Pipeline



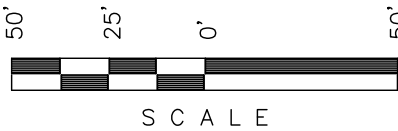
SWMP LEGEND:

- SCE - STABILIZED CONSTRUCTION ENTRANCE
- ST - SEDIMENT TRAP

SURFACE USE OF LOCATION IS GRAZING, VEGETATION CONSISTS MAINLY OF SAGEBRUSH, OAK BRUSH & NATIVE GRASSES.

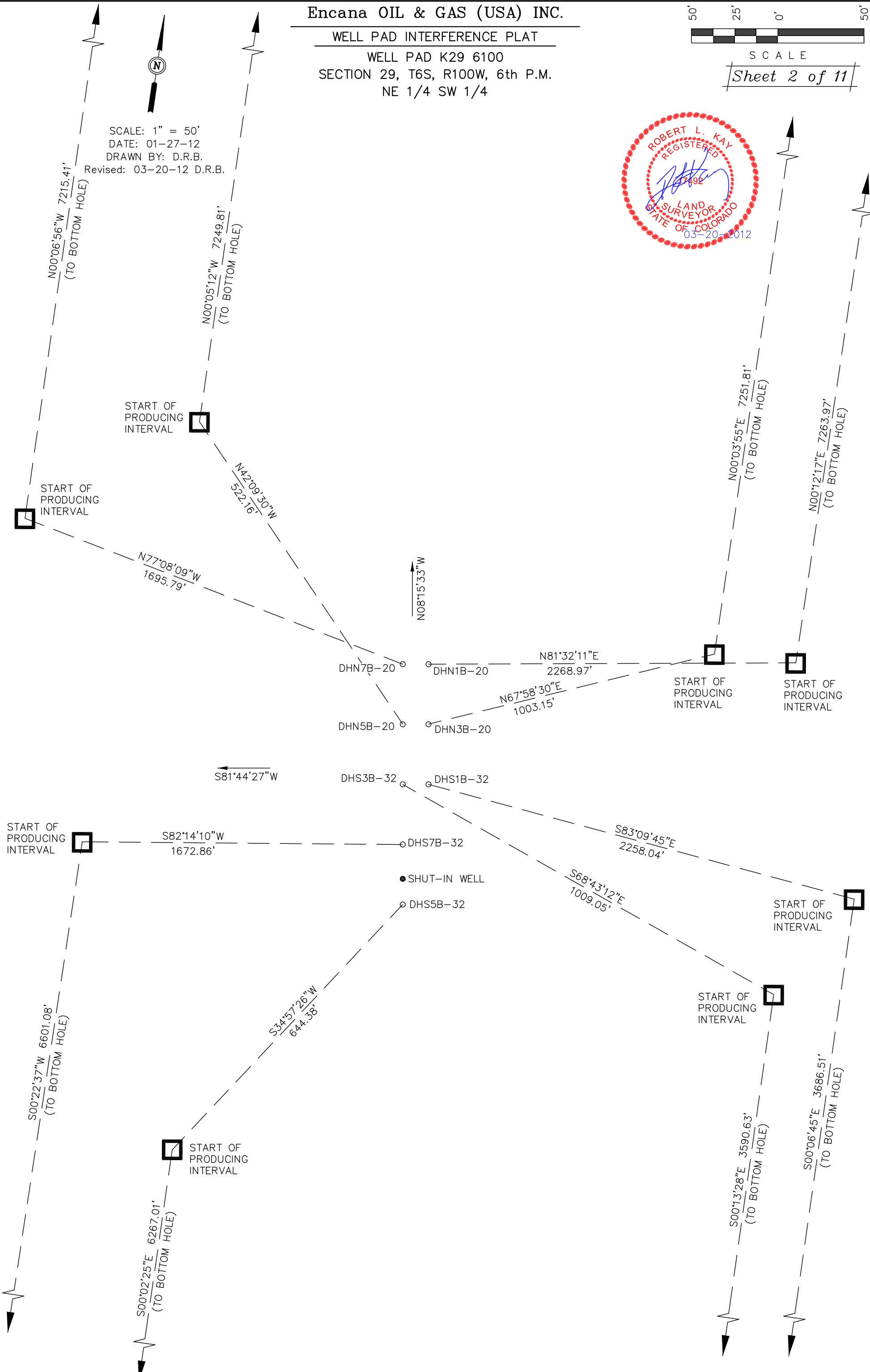
Encana OIL & GAS (USA) INC.

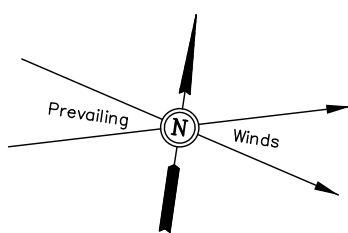
WELL PAD INTERFERENCE PLAT
WELL PAD K29 6100
SECTION 29, T6S, R100W, 6th P.M.
NE 1/4 SW 1/4



Sheet 2 of 11

SCALE: 1" = 50'
DATE: 01-27-12
DRAWN BY: D.R.B.
Revised: 03-20-12 D.R.B.

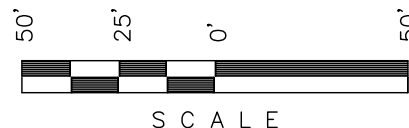




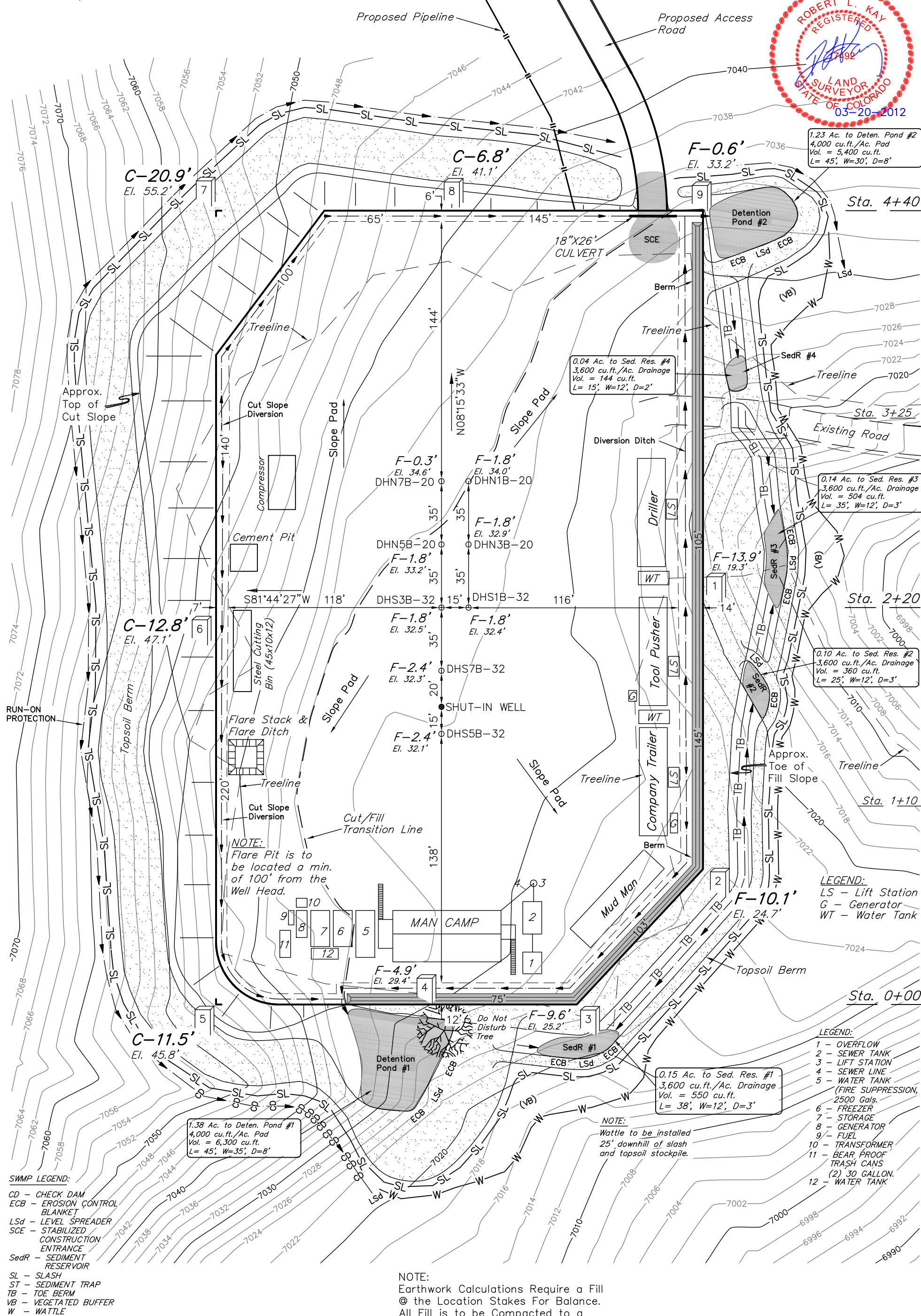
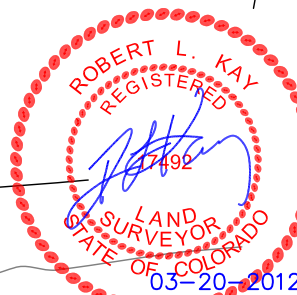
SCALE: 1" = 50'
DATE: 10-18-11
DRAWN BY: D.R.B.
Revised: 11-14-11 D.R.B.
Revised: 12-15-11 D.R.B.
Revised: 01-20-12 D.R.B.
Revised: 01-27-12 D.R.B.
Revised: 03-20-12 D.R.B.

Encana OIL & GAS (USA) INC.

CONSTRUCTION LAYOUT FOR
WELL PAD K29 6100
SECTION 29, T6S, R100W, 6th P.M.
NE 1/4 SW 1/4



Sheet 3 of 11



SWMP LEGEND:

CD - CHECK DAM
ECB - EROSION CONTROL BLANKET
LSd - LEVEL SPREADER
SCE - STABILIZED CONSTRUCTION ENTRANCE
SedR - SEDIMENT RESERVOIR
SL - SLASH
ST - SEDIMENT TRAP
TB - TOE BERM
VB - VEGETATED BUFFER
W - WATTLE

Elev. Ungraded Ground At DHS3B-32 Loc. Stake = 7032.5'
FINISHED GRADE ELEV. AT DHS3B-32 LOC. STAKE = 7033.8'

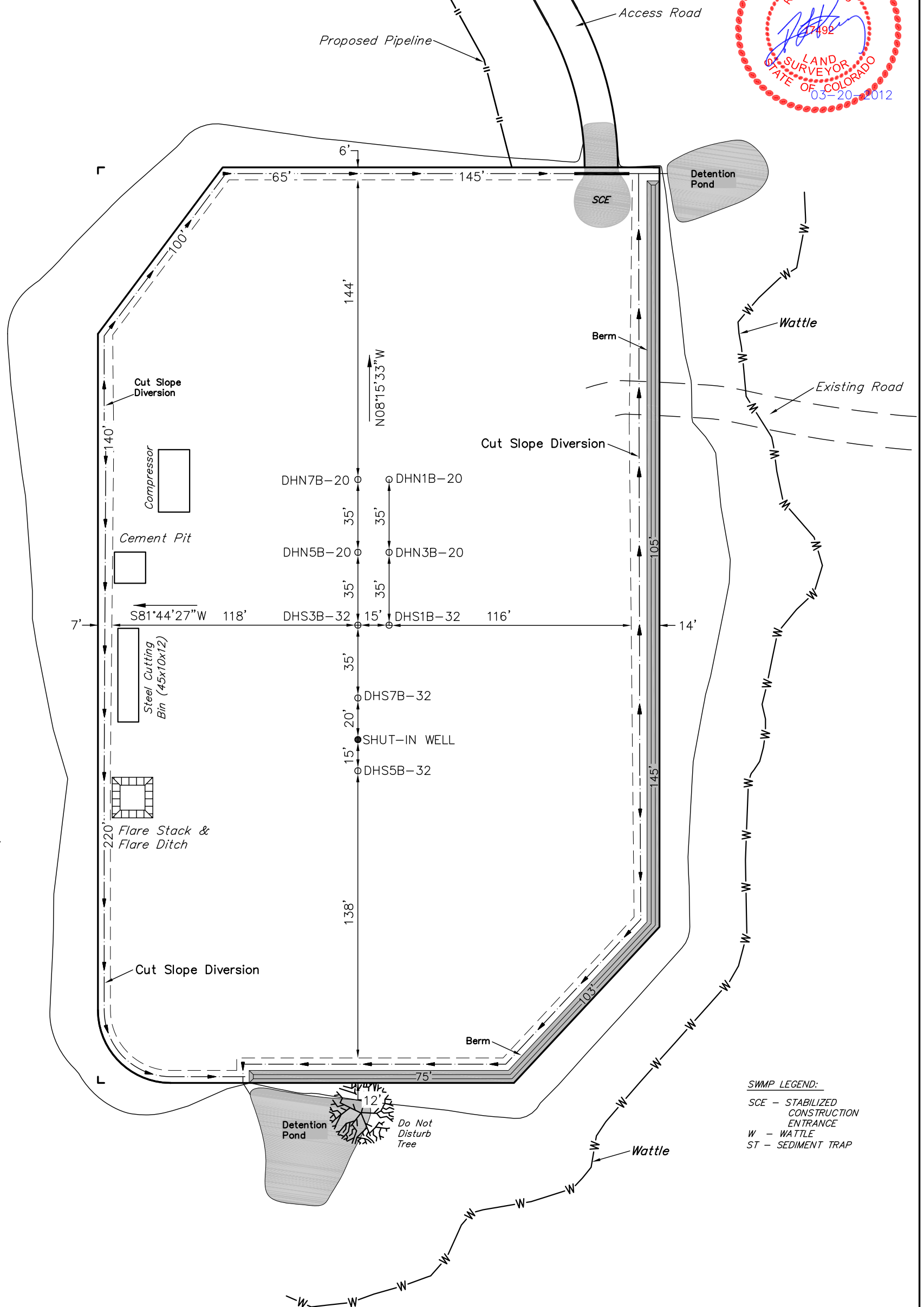
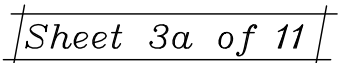
NOTE:

Earthwork Calculations Require a Fill @ the Location Stakes For Balance.
All Fill is to be Compacted to a Minimum of 95% of the Maximum Dry Density Obtained by AASHTO Method t-99.

UINTAH ENGINEERING & LAND SURVEYING
85 So. 200 East * Vernal, Utah 84078 * (435) 789-1017

NE 1/4 SW 1/4

Revised: 03-20-12 D.R.B.



NOTE:
Flare Pit is to
be located a min.
of 100' from the
Well Head.

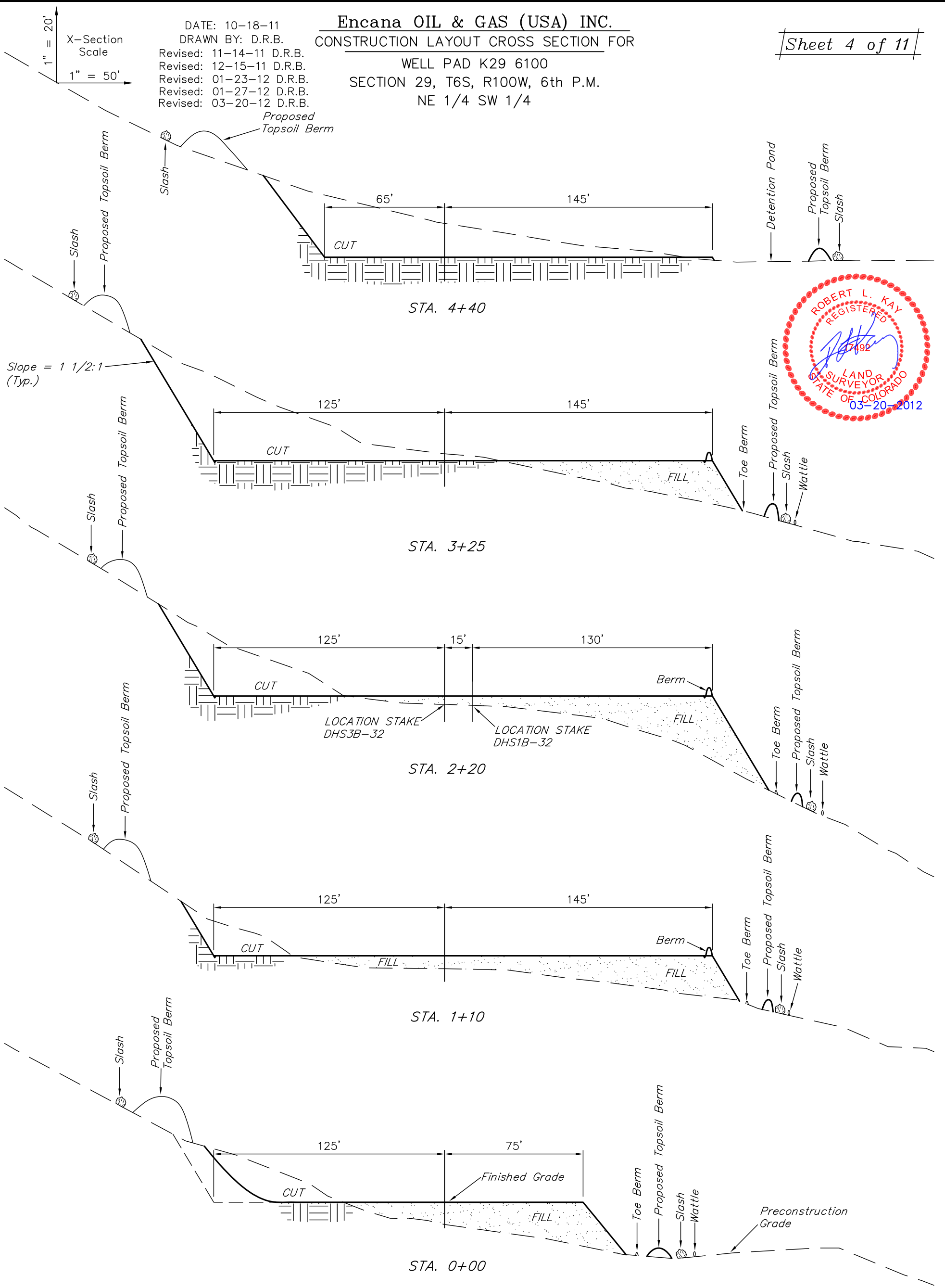
SCE - STABILIZED
CONSTRUCTION
ENTRANCE
W - WATTLE
ST - SEDIMENT TRAP

Encana OIL & GAS (USA) INC.
CONSTRUCTION LAYOUT CROSS SECTION FOR

Sheet 4 of 11

DATE: 10-18-11
DRAWN BY: D.R.B.
Revised: 11-14-11 D.R.B.
Revised: 12-15-11 D.R.B.
Revised: 01-23-12 D.R.B.
Revised: 01-27-12 D.R.B.
Revised: 03-20-12 D.R.B.

WELL PAD K29 6100
SECTION 29, T6S, R100W, 6th P.M.
NE 1/4 SW 1/4



NOTE:
Topsoil should not be
Stripped Below Finished
Grade on Substructure Area.

* NOTE:
FILL QUANTITY INCLUDES
5% FOR COMPACTION

APPROXIMATE YARDAGES

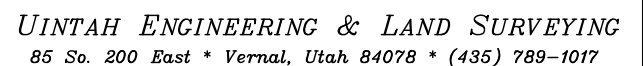
(6") Topsoil Stripping	=	2,680 Cu. Yds.
Remaining Location	=	13,600 Cu. Yds.
TOTAL CUT	=	16,300 CU.YDS.
FILL	=	13,620 CU.YDS.

EXCESS MATERIAL	=	2,680 Cu. Yds.
Topsoil	=	2,680 Cu. Yds.
EXCESS UNBALANCE (After Interim Rehabilitation)	=	0 Cu. Yds.

TYPICAL RIG LAYOUT FOR
WELL PAD K29 6100
SECTION 29, T6S, R100W, 6th P.M.
NE 1/4 SW 1/4

Sheet 5 of 11

A circular red seal for Robert L. Kay, a Registered Professional Surveyor in the State of Colorado. The seal features his signature in blue ink across the center, with the license number 17492 printed below it. The text "ROBERT L. KAY" is at the top, "REGISTERED" is on the right, "LAND SURVEYOR" is at the bottom, and "STATE OF COLORADO" is on the left. The commission expiration date "03-20-2012" is printed in blue at the bottom right.



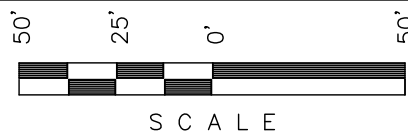
Encana OIL & GAS (USA) INC.

PRODUCTION SCHEMATIC FOR

WELL PAD K29 6100

SECTION 29, T6S, R100W, 6th P.M.

NE 1/4 SW 1/4



SCALE

Sheet 6 of 11

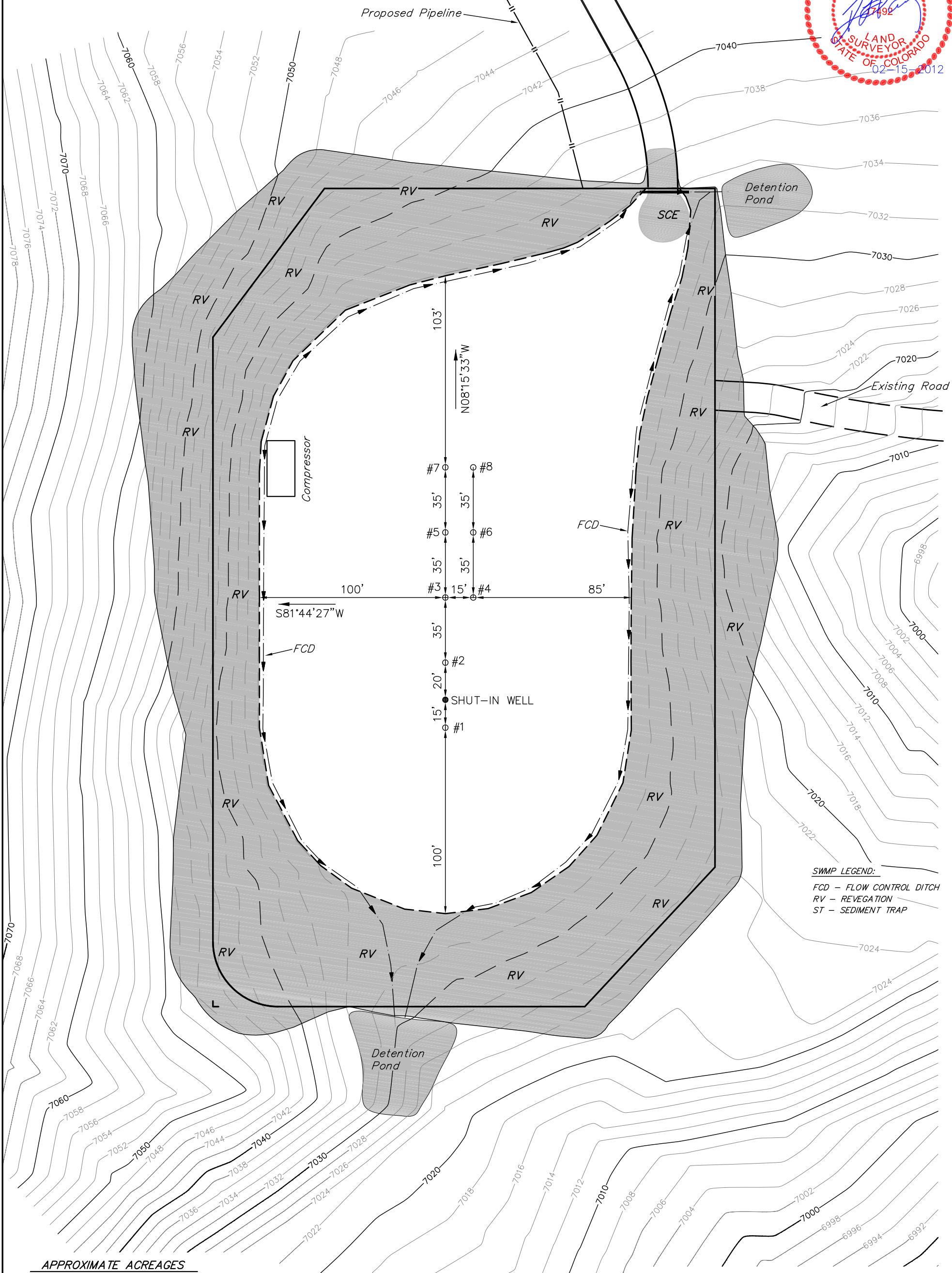


SCALE: 1" = 50'

DATE: 01-26-12

DRAWN BY: D.R.B.

Revised: 03-21-12 D.R.B.



SWMP LEGEND:

- FCD - FLOW CONTROL DITCH
- RV - REVEGATION
- ST - SEDIMENT TRAP

APPROXIMATE ACREAGES

TOTAL RECLAIMED AREA = ± 1.698 ACRES

UN-RECLAIMED AREA = ± 1.509 ACRES

UINTAH ENGINEERING & LAND SURVEYING
85 So. 200 East * Vernal, Utah 84078 * (435) 789-1017

