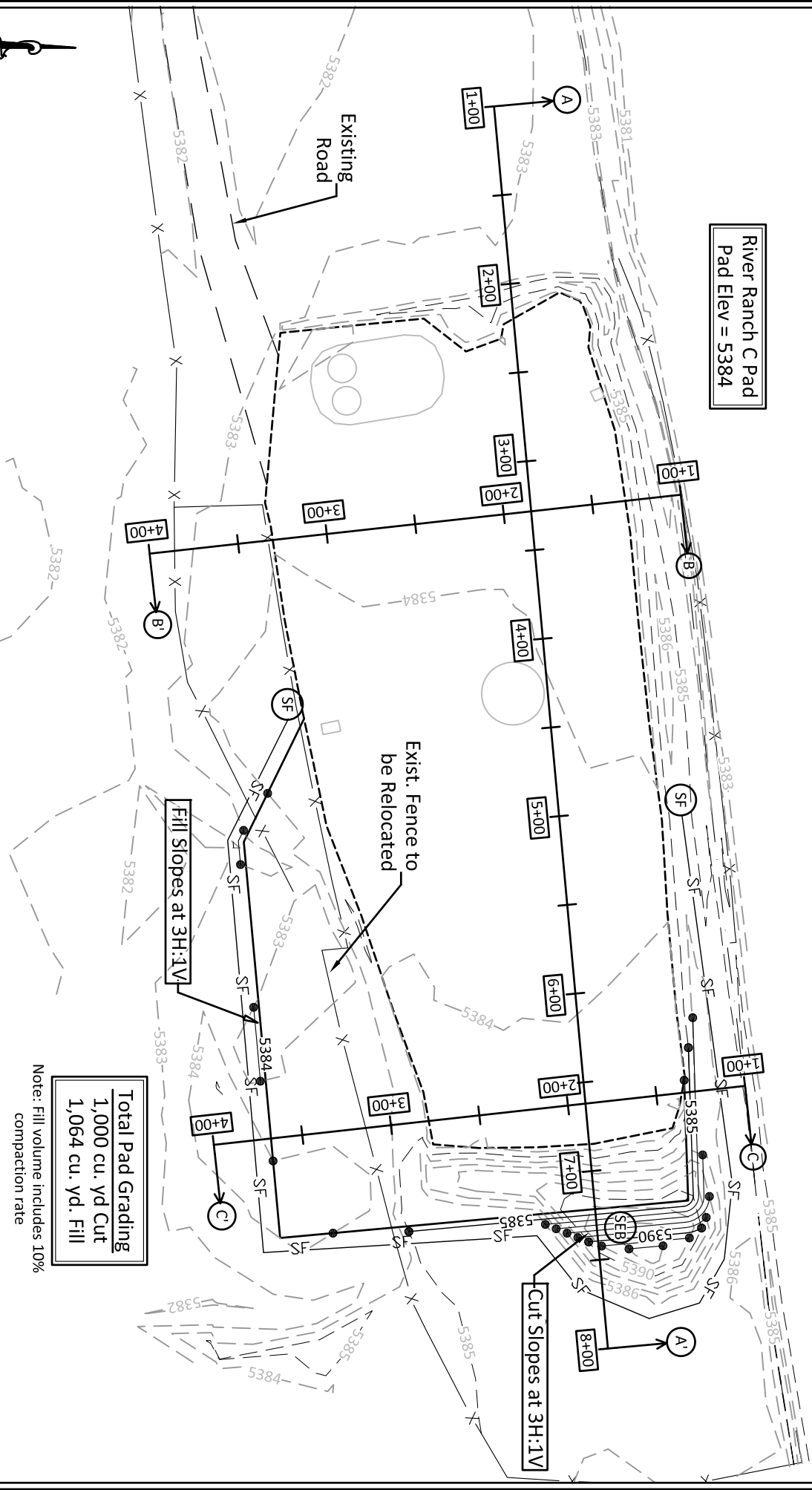


# Grading and BMP Plan

## River Ranch C Pad Expansion

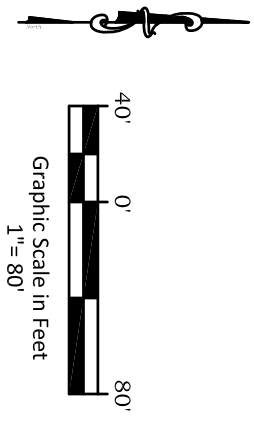
### Section 8, Township 6 South, Range 92 West



River Ranch C Pad  
Pad Elev = 5384

**Total Pad Grading**  
1,000 cu. yd. Cut  
1,064 cu. yd. Fill

Note: Fill volume includes 10% compaction rate



**River Valley Survey, Inc.**  
110 East 3rd. Street, Suite 213  
Rifle, Colorado 81650  
Ph: 970-379-7846

Project: River Ranch C Pad Expansion		Pad Expansion Plat	
Field Date: 03/22/12	Scale: 1" = 80'	Prepared For Antero Resources	
Date: 4/2/12	Sheet: 3 of 9	Situates In: SW 1/4 Section 8, T6S., R. 92 W. of the 6th P.M., Garfield County, Colorado	

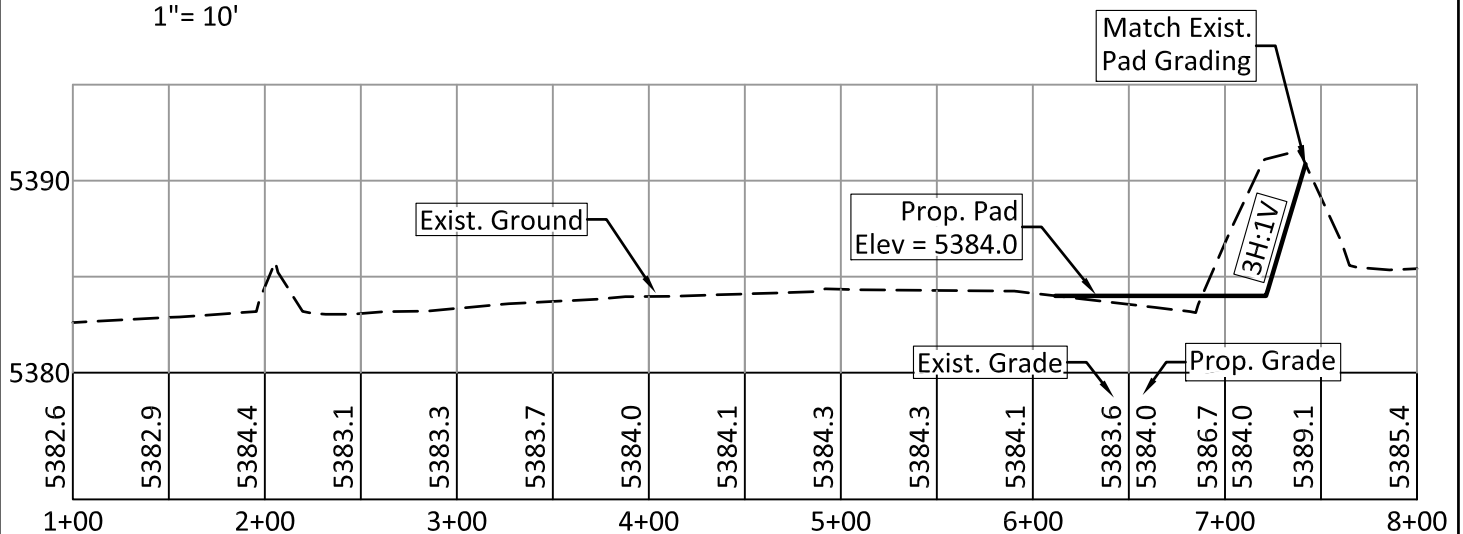


# Cross Sections

## River Ranch C Pad Expansion

### Section 8, Township 6 South, Range 92 West

Vertical Scale  
1" = 10'



**Section A-A'**



**River Valley Survey, Inc.**  
110 East 3rd. Street, Suite 213  
Rifle, Colorado 81650  
Ph: 970-379-7846

Project: River Ranch C Pad Expansion

Field Date: 03/22/12

Date: 4/2/12

Scale: 1" = 100'

Sheet: 4 of 9

Pad Expansion Plat  
Prepared For Antero Resources

Situate In:  
SW 1/4 Section 8, T6S., R. 92 W. of the  
6th P.M., Garfield County, Colorado

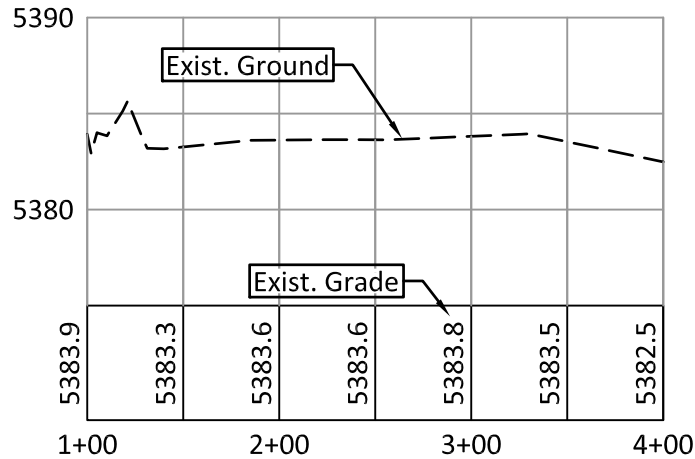


# Cross Sections

## River Ranch C Pad Expansion

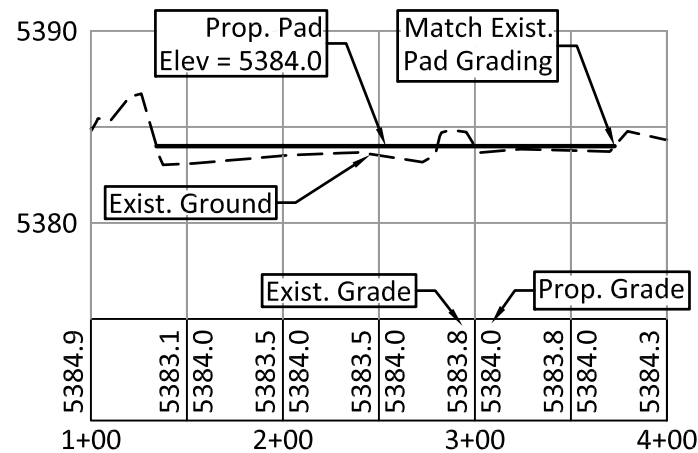
### Section 8, Township 6 South, Range 92 West

Vertical Scale  
1" = 10'



**Section B-B'**

Vertical Scale  
1" = 10'



**Section C-C'**



**River Valley Survey, Inc.**  
110 East 3rd. Street, Suite 213  
Rifle, Colorado 81650  
Ph: 970-379-7846

Project: River Ranch C Pad Expansion

Field Date: 03/22/12

Date: 4/2/12

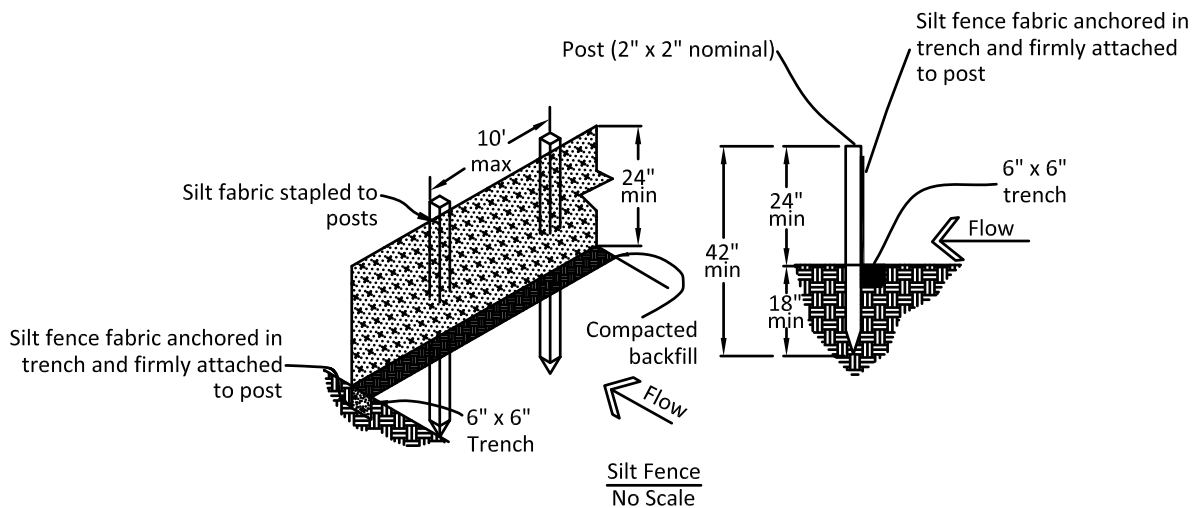
Scale: 1" = 100'

Sheet: 5 of 9

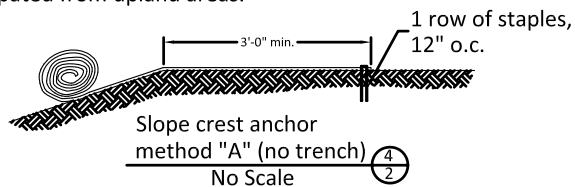
Pad Expansion Plat  
Prepared For Antero Resources

Situate In:  
SW¼ Section 8, T6S., R. 92 W. of the  
6th P.M., Garfield County, Colorado

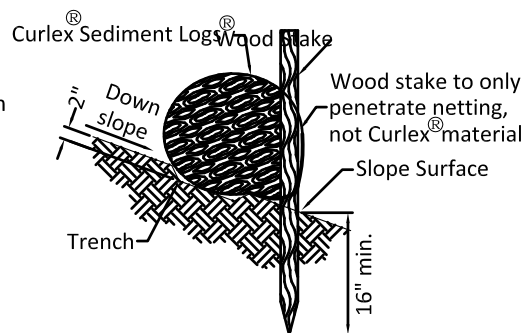
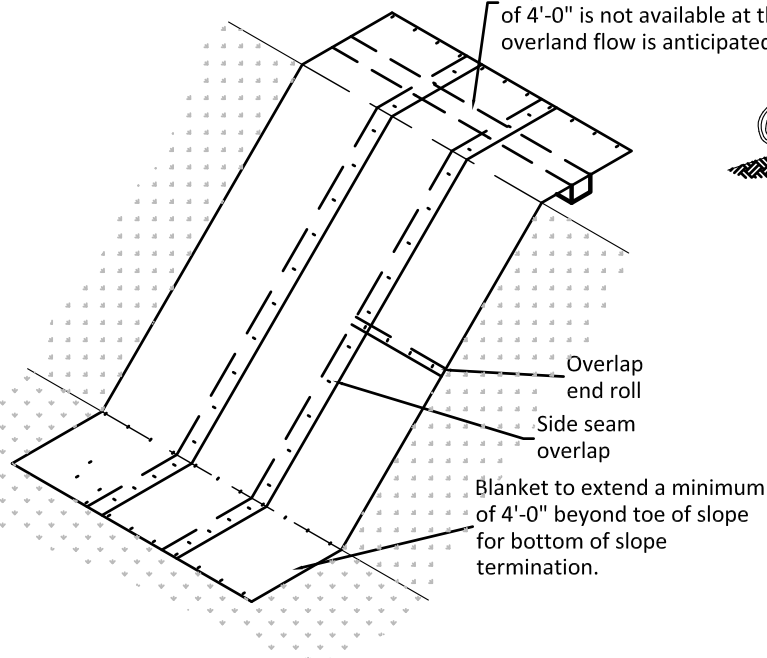




Extend blanket a minimum of 4'-0" over crest of slope, see detail 4/2. Trenching needed if a minimum of 4'-0" is not available at the crest of slope or if overland flow is anticipated from upland areas.



Do not need to trench blanket in if it can be extended a minimum of 4'-0" over the crest of the slope.



(SF) — X — Silt Fence

(SEB) Soil Erosion Blanket

A temporary sediment barrier constructed of posts, filter fabric, and in some cases, a wire support fence placed across or near the toe of a slope or in a minor drainage way to intercept and detain sediment and decrease flow velocities from drainage areas of limited size; applicable to mitigate erosion from sheet and small concentrated flows.

Apply to all newly cut/fill slopes steeper than 4:1. See detail above.



**River Valley Survey, Inc.**  
110 East 3rd. Street, Suite 213  
Rifle, Colorado 81650  
Ph: 970-379-7846

Project: River Ranch C Pad Expansion

Field Date: n/a

Date: 4/2/12

Scale: No Scale

Sheet: 6 of 9

Pad Expansion Plat  
Prepared For Antero Resources

Situate In:  
SW 1/4 Section 8, T6S., R. 92 W. of the  
6th P.M., Garfield County, Colorado

