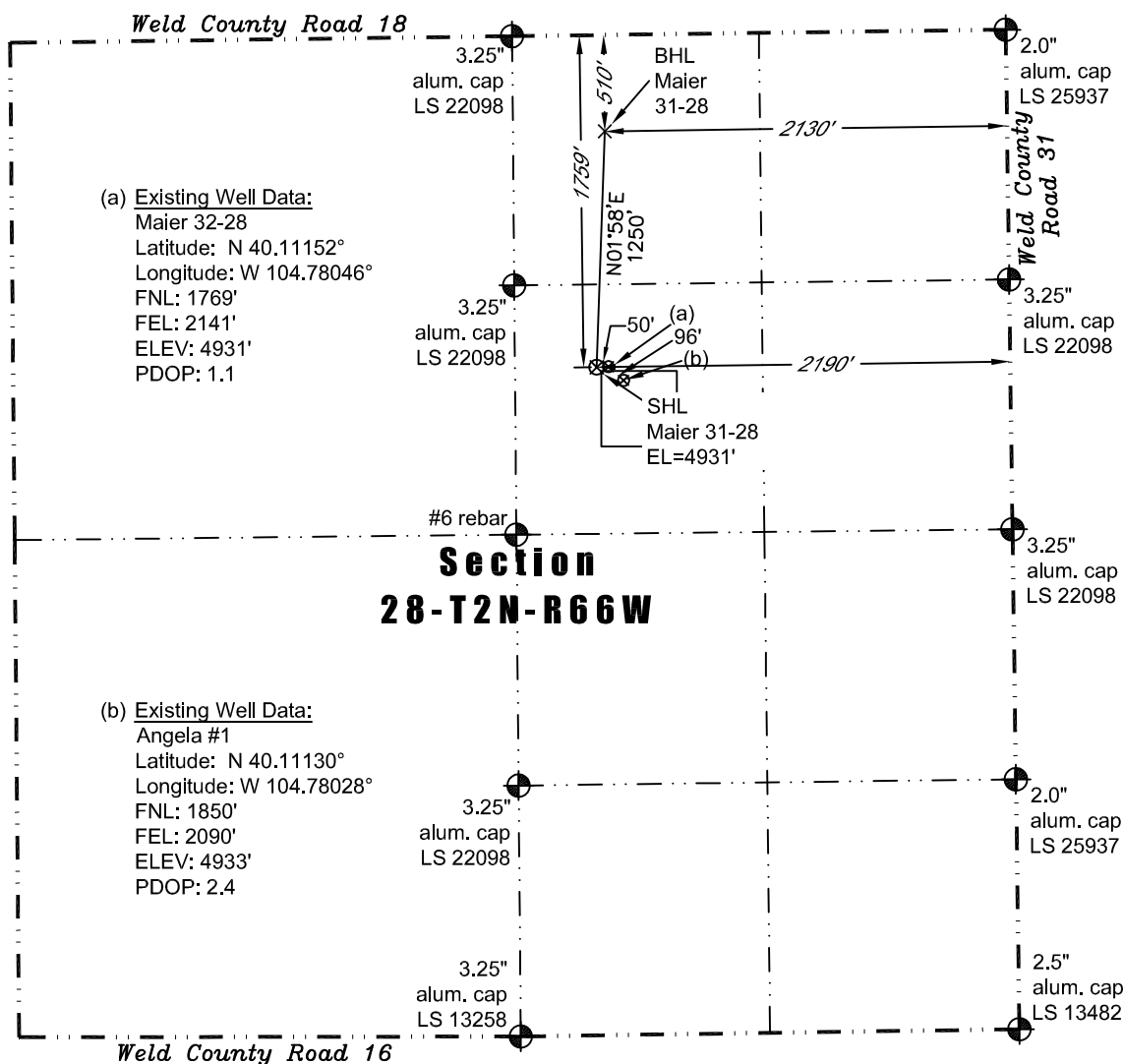


WELL LOCATION CERTIFICATE

THIS MAP DOES NOT REPRESENT A BOUNDARY SURVEY



In accordance with a request from Jay Knutson of EnCana Oil & Gas (USA) Inc., PLS Group, LLC has determined the location of the **Maier 31-28** well site to be SHL: 1759' FNL and 2190' FEL, (BHL 510' FNL and 2130' FEL), as measured at ninety (90) degrees from the section lines of Section 28, Township 2 North, Range 66 West of the 6th Principal Meridian, Weld County Colorado.

Proposed Surface Hole Data:

Latitude: N 40.11155° (BHL: 40.11498°)
Longitude: W 104.78064° (BHL: 104.78045°)
PDOP: 1.7

Nearest:

Building 1,156' southwest
Public Road 2,170' east
Property Line 432' west
Existing Well: Maier 32-28 50' southeast

Above Ground Utility 2,010' east
Railroad 7,768' west
Well Window: SHL is 32' outside

I hereby certify that this Well Location Certificate was prepared by me or under my direct supervision on 8/18/2011 for and on behalf of EnCana Oil & Gas (USA) Inc. That it is not a Land Survey Plat or an Improvement Survey Plat and that it is not to be relied upon for establishment of fences, buildings, or other future improvement lines.

John Robert McGehee LS#38219
Well: Maier 31-28 WLC