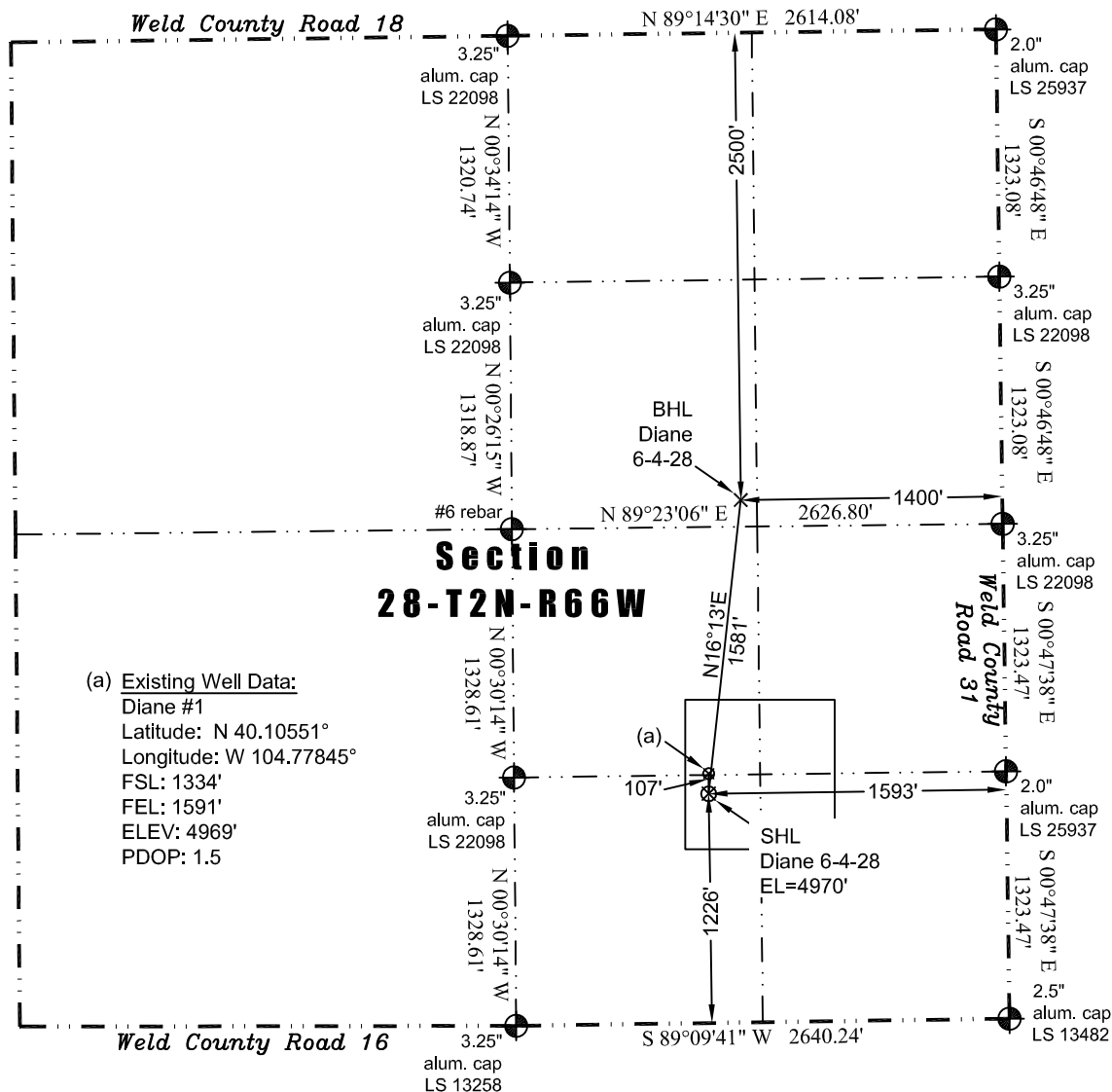


PLS Group, LLC
109 Coronado Ct. - Bldg. 7
Fort Collins, Colorado 80525
P. 970-282-3446 Fx. 970-377-6767

WELL LOCATION CERTIFICATE

THIS MAP DOES NOT REPRESENT A BOUNDARY SURVEY



(a) Existing Well Data:
Diane #1
Latitude: N 40.10551°
Longitude: W 104.77845°
FSL: 1334'
FEL: 1591'
ELEV: 4969'
PDOP: 1.5

In accordance with a request from Jay Knutson of EnCana Oil & Gas (USA) Inc., PLS Group, LLC has determined the location of the **Diane 6-4-28** well site to be SHL: 1226' FSL and 1593' FEL, (BHL 2500' FNL and 1400' FEL), as measured at ninety (90) degrees from the section lines of Section 28, Township 2 North, Range 66 West of the 6th Principal Meridian, Weld County Colorado.

Proposed Surface Hole Data:

Latitude: N 40.10522° (BHL: 40.10953°)
Longitude: W 104.77846° (BHL: 104.77780°)
PDOP: 1.1

Nearest:

Building 578' northwest	Above Ground Utility 830' northwest
Public Road 1,211' south	Railroad 8,370' west
Property Line 100' north	Well Window: SHL is 125' inside
Existing Well: Diane #1 107' north	

Notes:

- 1) Bearings and distances based on NAD 83 Colorado North State Plane Coordinates using RTK GPS observations taken 10/7/11 by operator Tom Winans.
- 2) Conversion factor to ground (1.000274424).
- 3) Elevations based on NAVD 88 GPS heights and Geoid 2003 corrections.
- 4) See Location Drawing for visible improvements within 400 feet of Pad Site.
- 5) The surface use is cultivated field.

NOTICE: According to Colorado law you must commence any legal action based upon any defect in this W.L.C. within three years after you first discover such defect. In no event may any action based upon any defect in this W.L.C. be commenced more than ten years from this said date of the certification shown hereon.

I hereby certify that this Well Location Certificate was prepared by me or under my direct supervision for and on behalf of EnCana Oil & Gas (USA) Inc. That I am a Professional Land Surveyor in the State of Colorado and that I am not to be relied upon for establishment of fences, buildings, or other future improvement lines.

John Robert McGehee LS#38219
Well: Diane 6-4-28 WLC