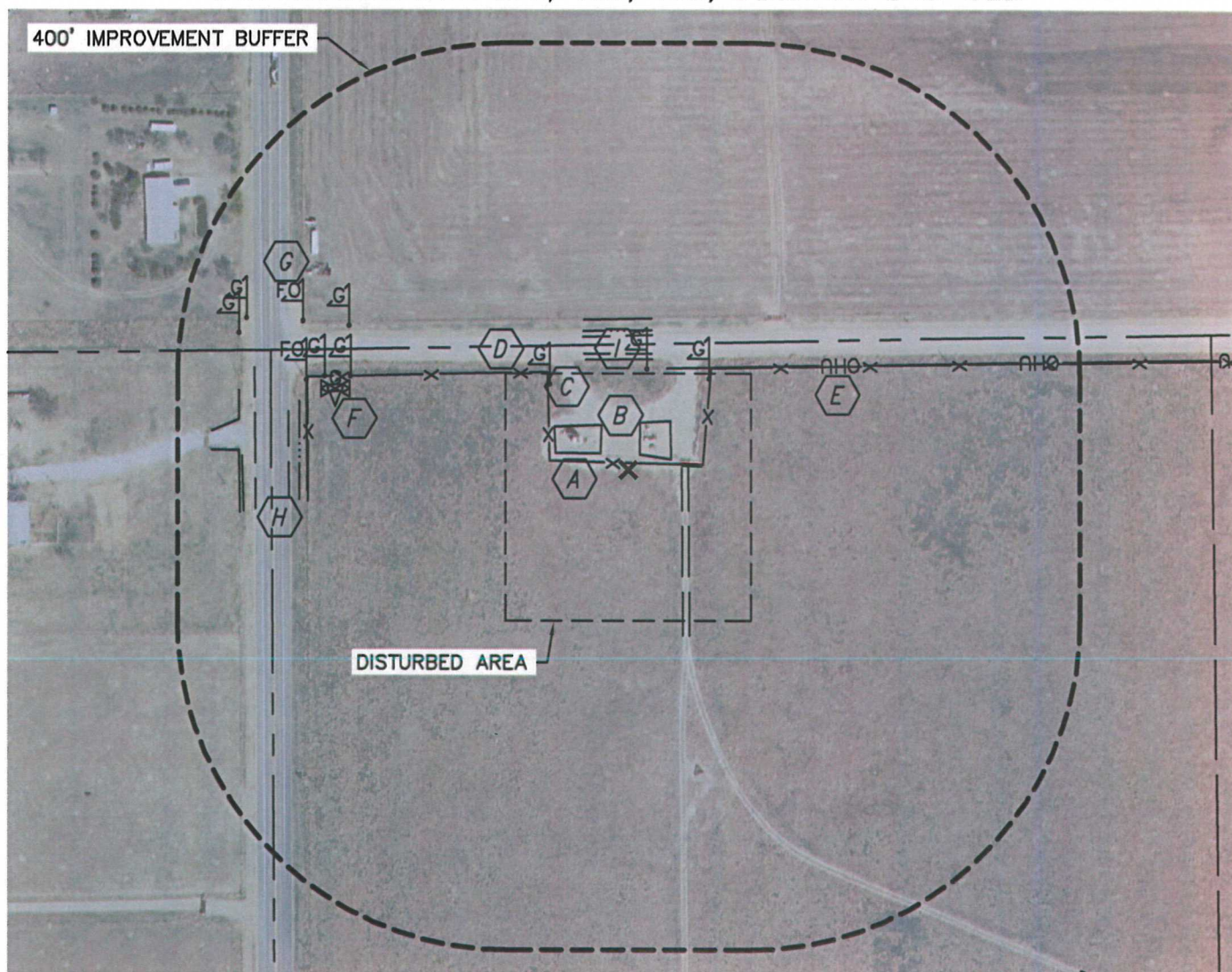


Lat40°, Inc. 1635 Foxtrail Drive, Suite 325 Loveland, CO 970-776-3321

PRODUCTION FACILITY LOCATION DRAWING

BUTTERBALL D19-17D, 18D, 19D, DECHANT D19-32D

SECTION: 19
TOWNSHIP: 3N
RANGE: 64W



REFERENCE POINT LOCATION:

LATITUDE: 40.21754°N
LONGITUDE: 104.60111°W
ELEV: 4808'
PDOP: 1.2

DATE: 1/13/2012

OPERATOR: ADAM KELLY

1/41/4: NW1/4NW1/4

FNL: 152'

FWL: 436'

DISTANCE TO WELL: 1374'

ASSOCIATED NEW WELLS:

BUTTERBALL D19-17D, 18D, 19D

DECHANT D19-32D

ASSOCIATED EXISTING WELLS:

TURK BLUE D19-4, 5, 6, 2J

BUTTERBALL D19-20D

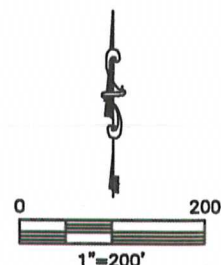
IMPROVEMENTS:

- A** FENCE 8' & 183' N, 391' & 475' W
- B** EX. PRODUCTION EQUIPMENT (NOBLE) 23' NE, 39' NW
- C** GAS LINE MARKER 142', 244', 383', 388', 502' & 504' NW, 125' N, 148' NE
- D** COUNTY ROAD 32 141' N
- E** OVERHEAD UTILITY 122' N, 392' W
- F** GAS VALVE 362' NW
- G** FIBER OPTIC MARKER 408' & 437' NW
- H** COUNTY ROAD 49 414' W
- I** BARROW DITCH 134' & 169' N, 402' & 471' W

LEGEND

X - REFERENCE POINT
ALL DISTANCES ARE APPROXIMATE.

NEAREST: BUILDING 618' NW,
PUBLIC ROAD 141' N (CR 32), ABOVE GROUND UTILITY 122' N,
RAILROAD 5280'+, PROPERTY LINE 152' N



DATE: rev 1/19/2012
PROJECT#: 2010139