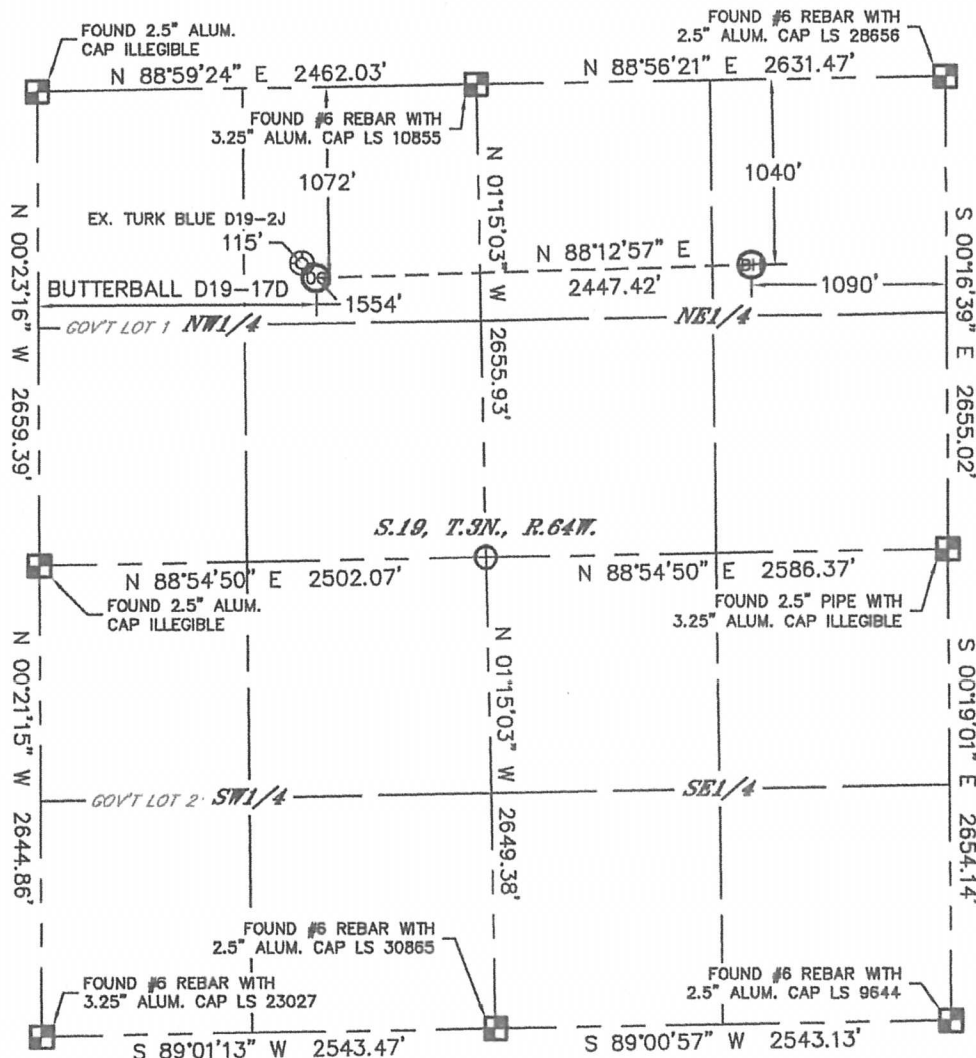


Lat40°, Inc. 1635 Foxtrail Drive, Suite 325 Loveland, CO 970-776-3321

WELL LOCATION CERTIFICATE

THIS MAP DOES NOT REPRESENT A BOUNDARY SURVEY

SECTION: 19
TOWNSHIP: 3N
RANGE: 64W



In accordance with a request from Mike Rodine with Noble Energy Inc. Lat40°, Inc. has determined the surface location of the BUTTERBALL D19-17D to be 1072' from the NORTH line and 1554' from the WEST line and the bottom hole to be 1040' from the NORTH line and 1090' from the EAST line as measured at right angles from the section lines of Section 19, Township 3 North, Range 64 West of the Sixth Principal Meridian, County of Weld, State of Colorado.

I hereby state that this Well Location Certificate was prepared by me, or under my direct supervision, that the fieldwork was completed on 1/13/2012, for and on behalf of Noble Energy Inc. That this is not a Land Survey Plat or an Improvement Survey Plat, and that it is not to be relied upon for establishment of fence, building, or other future Improvement lines.

NOTE:

- 1) Bearings shown are Grid Bearings of the Colorado State Plane Coordinate System, North Zone, North American Datum 1983/2007. The lineal dimensions as contained herein are based upon the "U.S. Survey Foot."
- 2) Ground elevations are based on an observed GPS elevation (NAVD 1988 DATUM).
- 3) NEAREST EXISTING WELL: TURK BLUE D19-2J, 115'
- 4) IMPROVEMENTS: See LOCATION DRAWING for all visible improvements within 400' of disturbed area.
- 5) SURFACE USE: EX. WELL PAD / RANGELAND
- 6) INSTRUMENT OPERATOR: ADAM KELLY

NOTE

According to Colorado law, you must commence any legal action based upon any defect in this W.L.C. within three years after you discover such defect. In no event, may any action based upon any defect in this survey be commenced more than ten years after the date of the certificate shown hereon. (13-80-105 C.R.S.)

LEGEND

- = ALIQUOT MONUMENT AS DESCRIBED
- = CALCULATED POSITION

SURFACE LOCATION
LATITUDE: 40.21504°N
LONGITUDE: 104.59712°W
PDOP: 1.5
ELEV: 4790'
1/4, 1/4: NE1/4NW1/4
NEAREST PROPERTY LINE: 1072' N

BOTTOM HOLE
LATITUDE: 40.21518°N
LONGITUDE: 104.58836°W



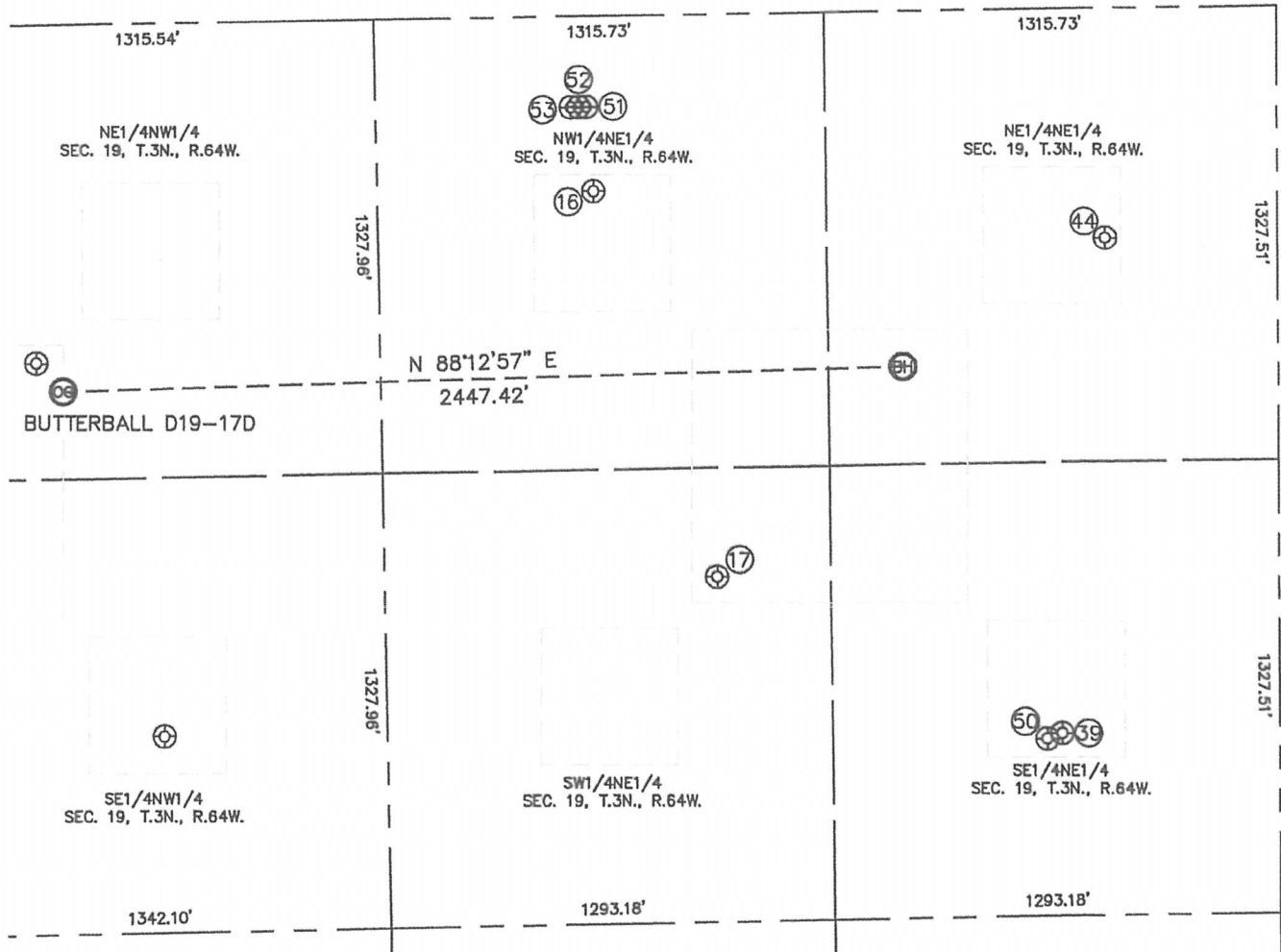
Brian T. Brinkman—On behalf of Lat40°, Inc.
Colorado Licensed Professional
Land Surveyor No. 38175
DATE: 1/18/2012
PROJECT#: 2010139

Lat40°, Inc. 1635 Foxtrail Drive, Suite 325 Loveland, CO 970-776-3321

SITE SKETCH

BUTTERBALL D19-17D

SECTION: 19
TOWNSHIP: 3N
RANGE: 64W



16
TURK WHITE D19-2
NW1/4NE1/4
512' FNL
1991' FEL
LAT-40.21661°N
LONG-104.59157°W
PDOP: 2.0
ELEV: 4772'

17
MILE HIGH 2-19-1
SW1/4NE1/4
1846' FNL
1832' FEL
LAT-40.21350°N
LONG-104.59031°W
PDOP: 1.9
ELEV: 4773'

39
TURK WHITE D19-8
SE1/4NE1/4
2122' FNL
631' FEL
LAT-40.21222°N
LONG-104.58673°W
PDOP: 2.2
ELEV: 4771'

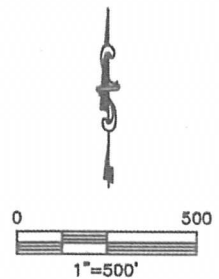
44
TURK WHITE D19-1
NE1/4NE1/4
673' FNL
500' FEL
LAT-40.21620°N
LONG-104.58624°W
PDOP: 1.5
ELEV: 4772'

50
BUTTERBALL D19-22D
SE1/4NE1/4
2137' FNL
675' FEL
LAT-40.21218°N
LONG-104.58689°W
PDOP: 1.8
ELEV: 4771'

51
BUTTERBALL D18-75HN
NW1/4NE1/4
265' FNL
2012' FEL
LAT-40.21728°N
LONG-104.59164°W
PDOP: 2.9
ELEV: 4776'

52
BUTTERBALL D19-75HN
NW1/4NE1/4
266' FNL
2034' FEL
LAT-40.21728°N
LONG-104.59172°W
PDOP: 2.1
ELEV: 4776'

53
BUTTERBALL H24-69HN
NW1/4NE1/4
266' FNL
2056' FEL
LAT-40.21728°N
LONG-104.59180°W
PDOP: 3.3
ELEV: 4776'



DATE: 1/18/2012
PROJECT#: 2010139