

T6N, R67W, 6th P.M.

2002 Alum. Cap  
1.2' Below Ground,  
LS #30462  
Lat: 40.465367  
Long: 104.837208

GREAT WESTERN OIL & GAS COMPANY

Well location, DETTERER FD #25-2D, located as shown in the NW 1/4 NE 1/4 of Section 25, T6N, R67W, 6th P.M., Weld County, Colorado.

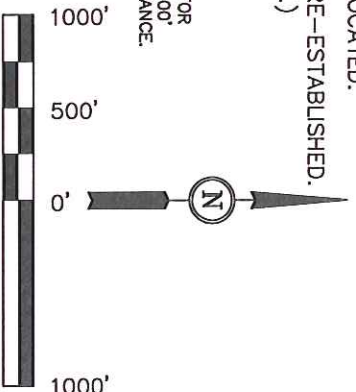
### BASIS OF ELEVATION

USGS COOPERATIVE BASE NETWORK CONTROL STATION, DESIGNATION "VERMILYEA". NGS DATA SHEET LISTS THE NAVD 88 ELEVATION AS BEING 5026 FEET

### LEGEND:

- └─ = 90° SYMBOL
- = PROPOSED WELL HEAD.
- ▲ = SECTION CORNERS LOCATED.
- △ = SECTION CORNERS RE-ESTABLISHED.  
(Not Set on Ground.)

NOTE:  
SEE APPENDIX TO LEGAL PLAT FOR  
EXISTING IMPROVEMENTS WITHIN 400'  
OF THE PROPOSED WELL DISTURBANCE.



### CERTIFICATE

THIS IS TO CERTIFY THAT THE ABOVE PLAT WAS PREPARED FROM  
FIELD NOTES OF ACTUAL SURVEYS MADE BY ME OR UNDER MY  
SUPERVISION AND THAT THE SAME ARE TRUE AND CORRECT TO THE  
BEST OF MY KNOWLEDGE AND BELIEF.

REGISTERED LAND SURVEYOR  
REGISTRATION NO. 124923  
STATE OF COLORADO  
03-16-12

UTAH ENGINEERING & LAND SURVEYING

86 SOUTH 200 EAST - VERNAL, UTAH 84078

(435) 789-1017

BASIS OF BEARINGS IS A G.P.S. OBSERVATION.

PDOP = 1.9

SCALE  
1" = 1000'

DATE SURVEYED:  
02-17-12

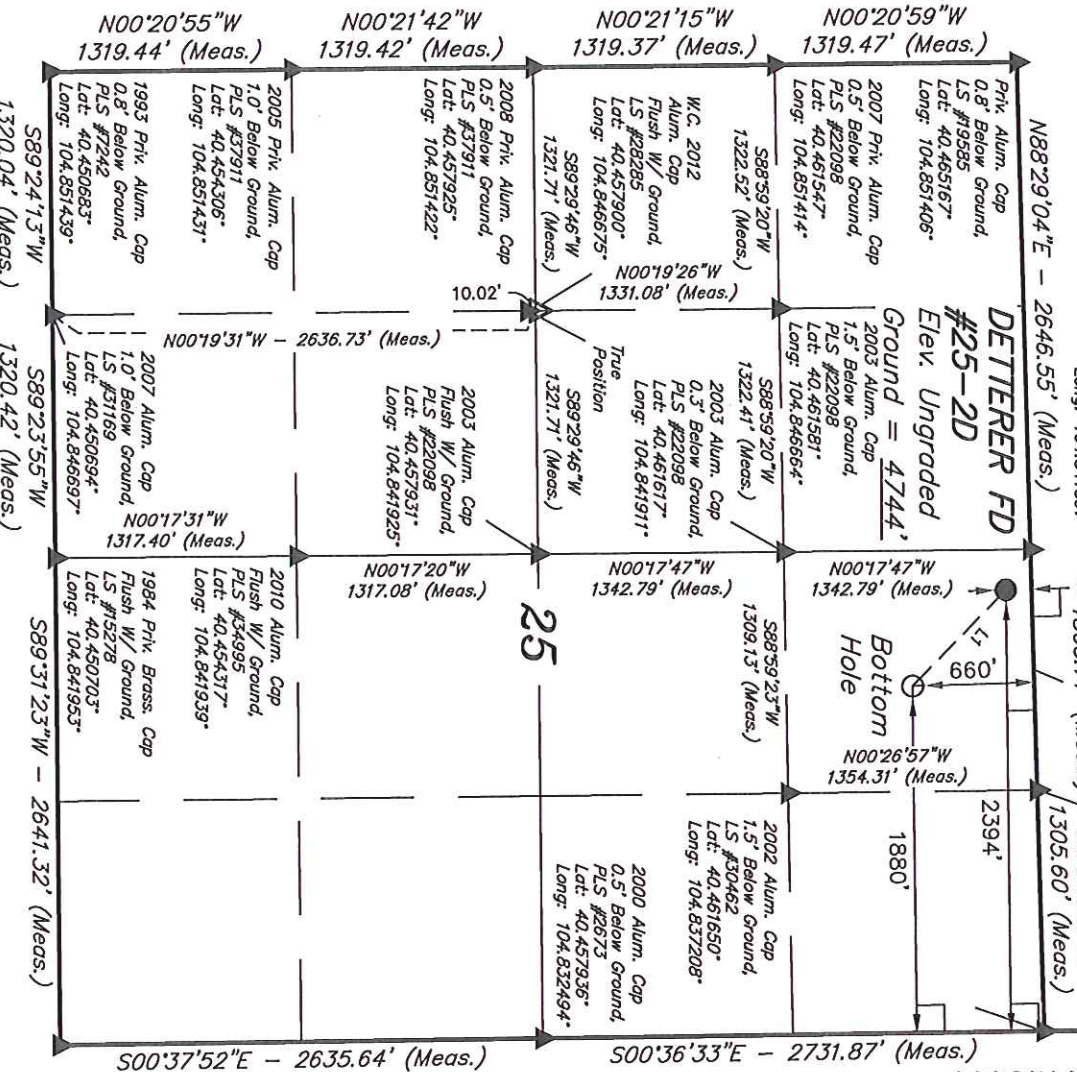
DATE DRAWN:  
03-13-12

### LINE TABLE

LINE	DIRECTION	LENGTH
L1	S45°44'43"E	724.78'

NAD 83 (TARGET BOTTOM HOLE)	NAD 83 (SURFACE LOCATION)
LATITUDE = 40°27'48.70" (40.463528)	LATITUDE = 40°27'53.73" (40.464925)
LONGITUDE = 104°50'21.36" (104.839267)	LONGITUDE = 104°50'28.02" (104.841117)
NAD 27 (TARGET BOTTOM HOLE)	NAD 27 (SURFACE LOCATION)
LATITUDE = 40°27'48.77" (40.463547)	LATITUDE = 40°27'53.80" (40.464944)
LONGITUDE = 104°50'19.47" (104.838742)	LONGITUDE = 104°50'26.13" (104.840592)

### BASIS OF BEARINGS



PARTY	REFERENCES	FILE
D.N. G.W. T.B.	G.L.O. PLAT	
WEATHER		
COLD		