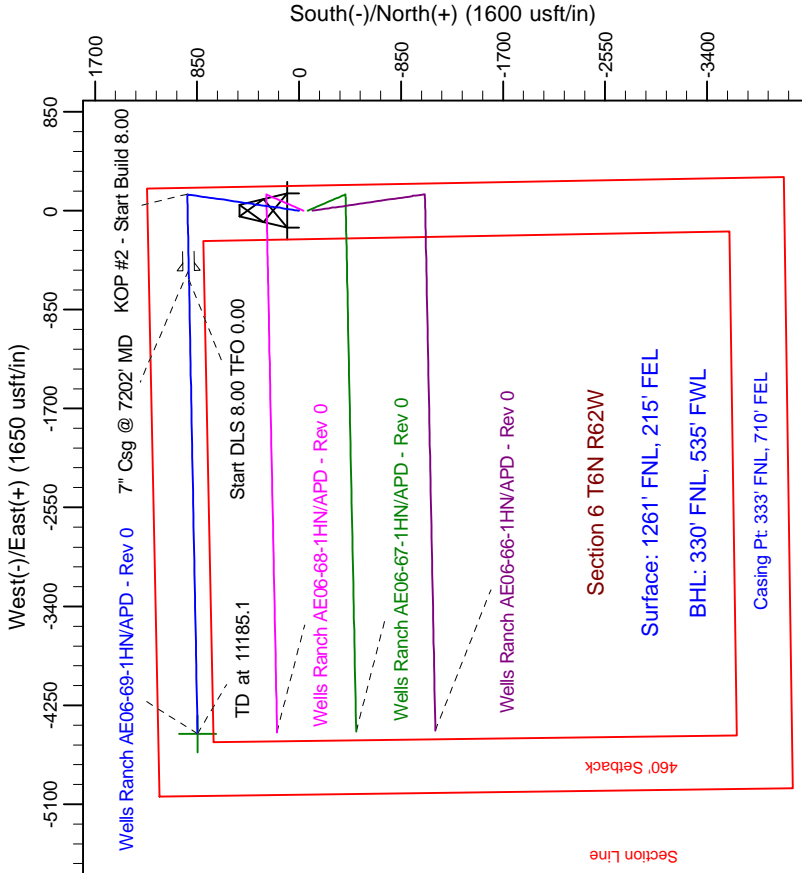
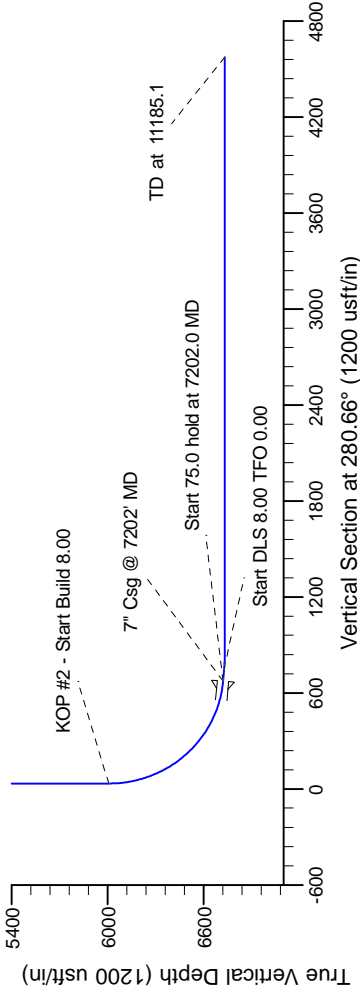
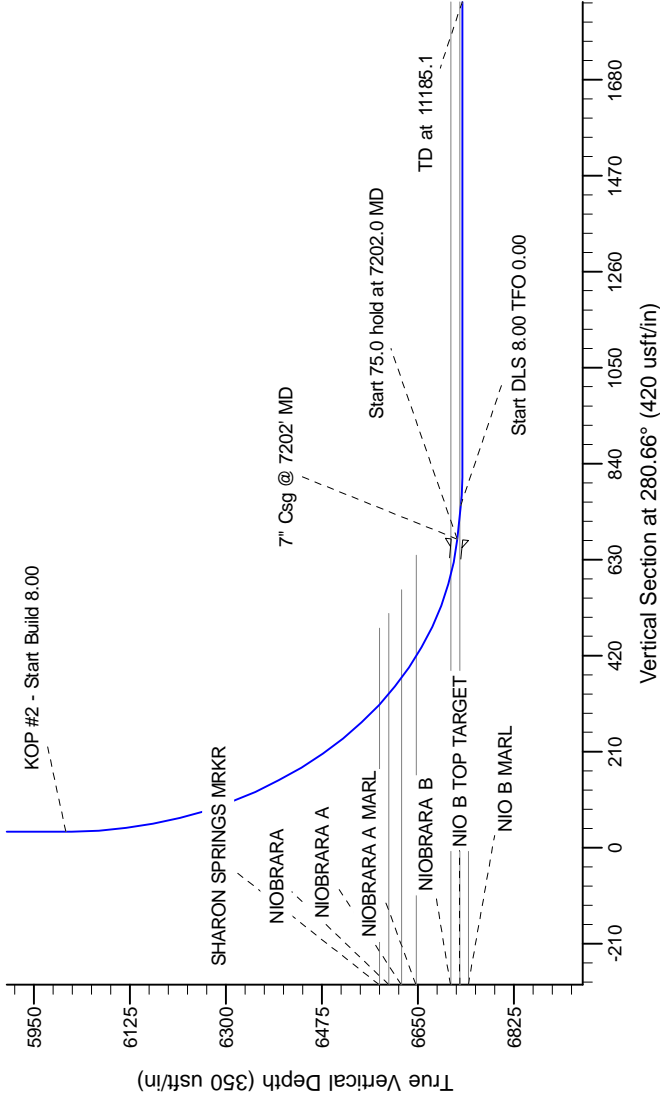


Northern Region Drilling

Project: Wattenberg Field
Site: AE (Sec.6-T06N-R62W) Weld County, CO
Well: Wells Ranch AE06-69-1HN
Wellbore: Original Drilling
Design: APD - Rev 0

Geodetic System: US State Plane 1983
Datum: North American Datum 1983
Ellipsoid: GRS 1980
Zone: Colorado Northern Zone
System Datum: Mean Sea Level

SECTION DETAILS										
Sec	MD	Inc	Azi	TVD	+N/-S	+E/-W	Dleg	TFace	VSect	Target
1	0.0	0.00	0.00	0.0	0.0	0.0	0.00	0.00	0.0	
2	1500.0	0.00	0.00	1500.0	0.0	0.0	0.00	0.00	0.0	
3	2183.8	17.10	8.55	2173.7	100.1	15.1	2.50	8.55	3.7	
4	4697.4	17.10	8.55	4576.3	830.9	124.9	0.00	0.00	30.9	
5	5381.3	0.00	0.00	5250.0	931.0	140.0	2.50	180.00	34.6	
6	6139.5	0.00	0.00	6008.2	931.0	140.0	0.00	0.00	34.6	
7	7202.0	85.00	268.95	6721.7	919.0	-513.7	8.00	268.95	674.8	
8	7277.0	85.00	268.95	6728.2	917.7	-588.4	0.00	0.00	747.9	
9	7539.5	90.00	268.95	6731.0	916.5	-650.8	8.00	0.00	809.0	
10	11185.1	90.00	268.95	6731.0	846.0	-4495.7	0.00	0.00	4574.6	Wells Ranch AE06-69-1HN BHL 330'FNL, 535'FWL



T

G

M

Azimuths to Grid North

True North: -0.74°

Magnetic North: 7.77°

Magnetic Field

Strength: 53183.5snT

Dip Angle: 67.20°

Date: 2/29/2012

Model: IGRF200510

WELL DETAILS: Wells Ranch AE06-69-1HN			
Northing	Ground Level	Latitude	Longitude
1434150.51	4932.0	40.519520	-104.356790

Plan: APD - Rev 0 (Wells Ranch AE06-69-1HN/Original Drilling)	
Created By: Carrie Wilers	Date: 17:31, March 01 2012