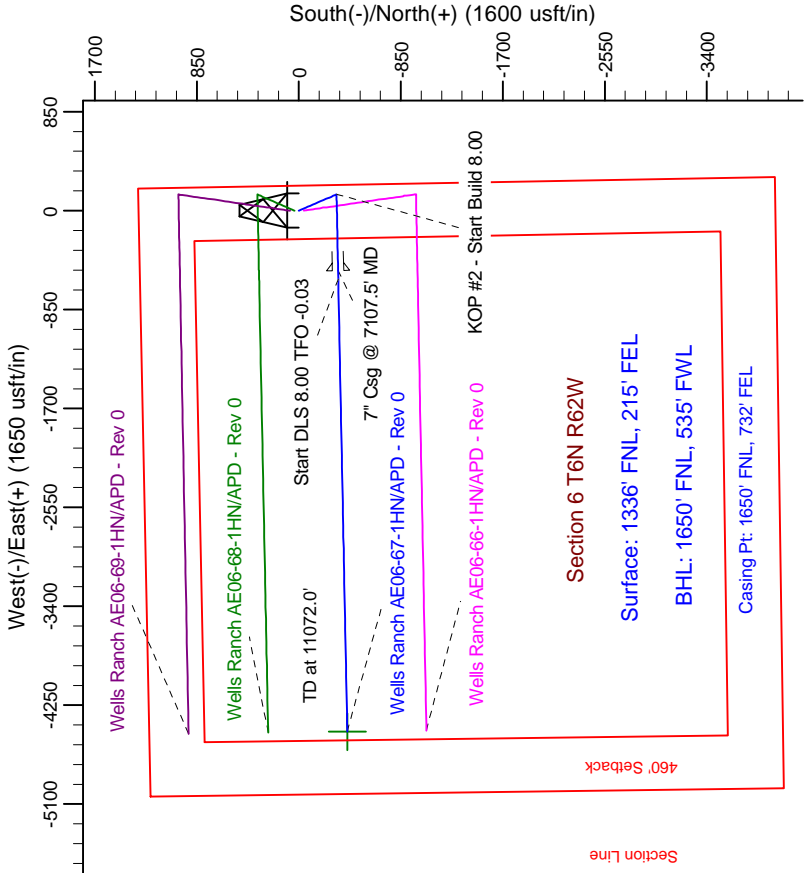
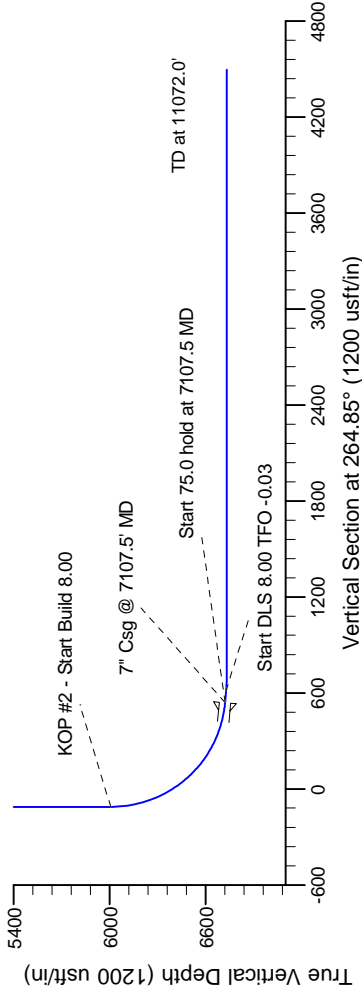
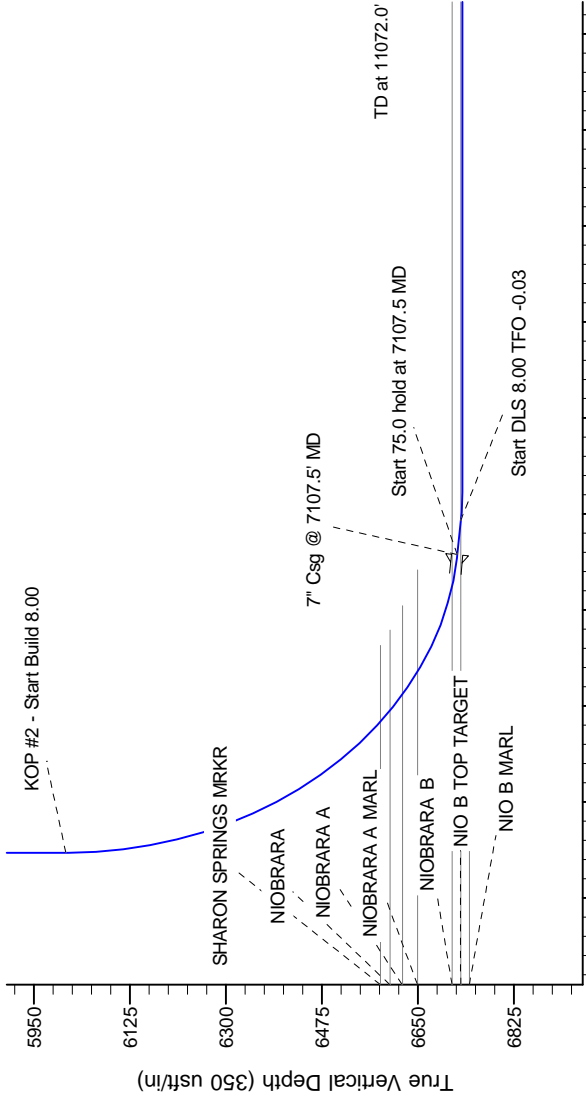


Northern Region Drilling

Project: Wattenberg Field  
Site: AE (Sec.6-T06N-R62W) Weld County, CO  
Well: Wells Ranch AE06-67-1HN  
Wellbore: Original Drilling  
Design: APD - Rev 0

Geodetic System: US State Plane 1983  
Datum: North American Datum 1983  
Ellipsoid: GRS 1980  
Zone: Colorado Northern Zone  
System Datum: Mean Sea Level

SECTION DETAILS											
Sec	MD	Inc	Azi	TVD	+N/-S	+E/-W	Dleg	TFace	VSect	Target	
1	0.0	0.00	0.00	0.0	0.0	0.0	0.00	0.00	0.0		
2	1800.0	0.00	0.00	1800.0	0.0	0.0	0.00	0.00	0.0		
3	2361.1	14.03	155.97	2355.5	-62.4	27.8	2.50	155.97	-22.1		
4	3215.6	14.03	155.97	3184.5	-251.6	112.2	0.00	0.00	-89.1		
5	3776.7	0.00	0.00	3740.0	-314.0	140.0	2.50	180.00	-111.3		
6	6045.0	0.00	0.00	6008.3	-314.0	140.0	0.00	0.00	-111.3		
7	7107.5	85.00	268.89	6721.8	-326.7	-513.7	8.00	268.89	540.9		
8	7182.5	85.00	268.89	6728.4	-328.1	-588.4	0.00	0.00	615.4		
9	7245.0	90.00	268.89	6731.1	-329.3	-650.8	8.00	0.00	677.7		
0	11072.0			6731.0	-403.4	-4477.1	0.00	0.00	4495.2		Wells Ranch AE06-67-1HN BHL 1650FNL 535FWL



T

G

M

Azimuths to Grid North  
True North: -0.74°  
Magnetic North: 7.77°

Magnetic Field  
Strength: 53183.4snT  
Dip Angle: 67.20°  
Date: 2/29/2012  
Model: IGRF200510

WELL DETAILS: Wells Ranch AE06-67-1HN			
Northing	Ground Level: 4932.0	Longitude	
1434077.65	Easting Latitude 40.519320	-104.356790	
Plan: APD - Rev 0 (Wells Ranch AE06-67-1HN/Original Drilling)			
Created By: Carrie Willers		Date: 17:12, March 01 2012	