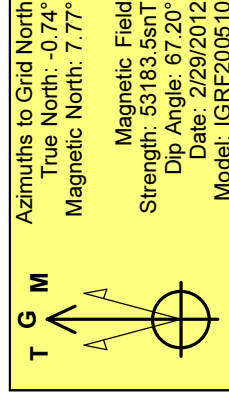
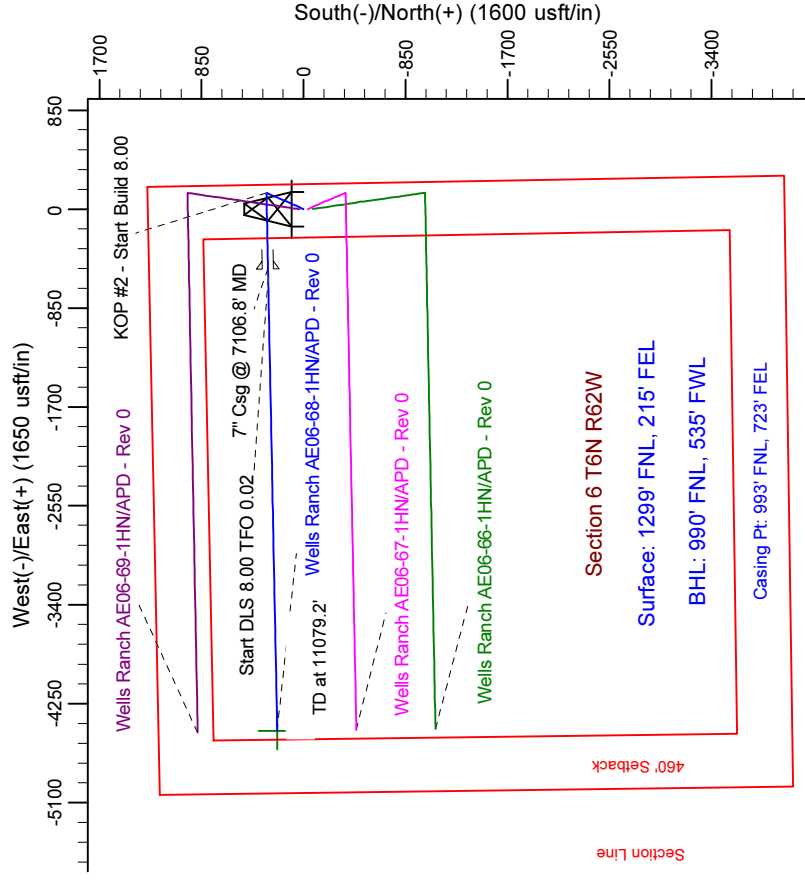
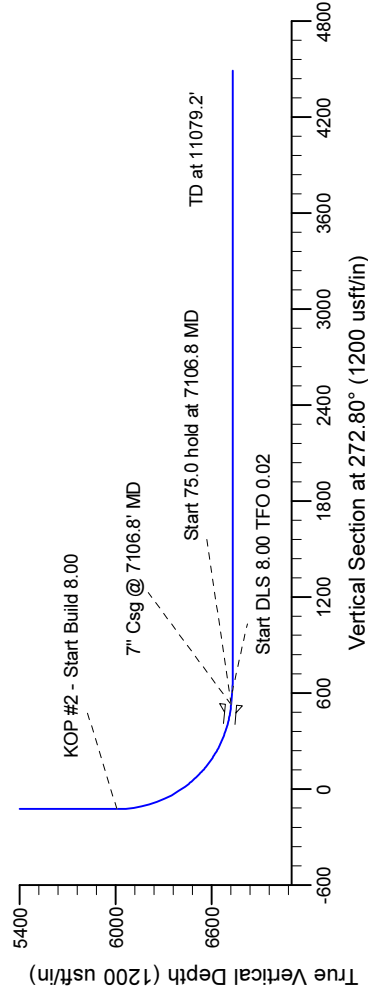
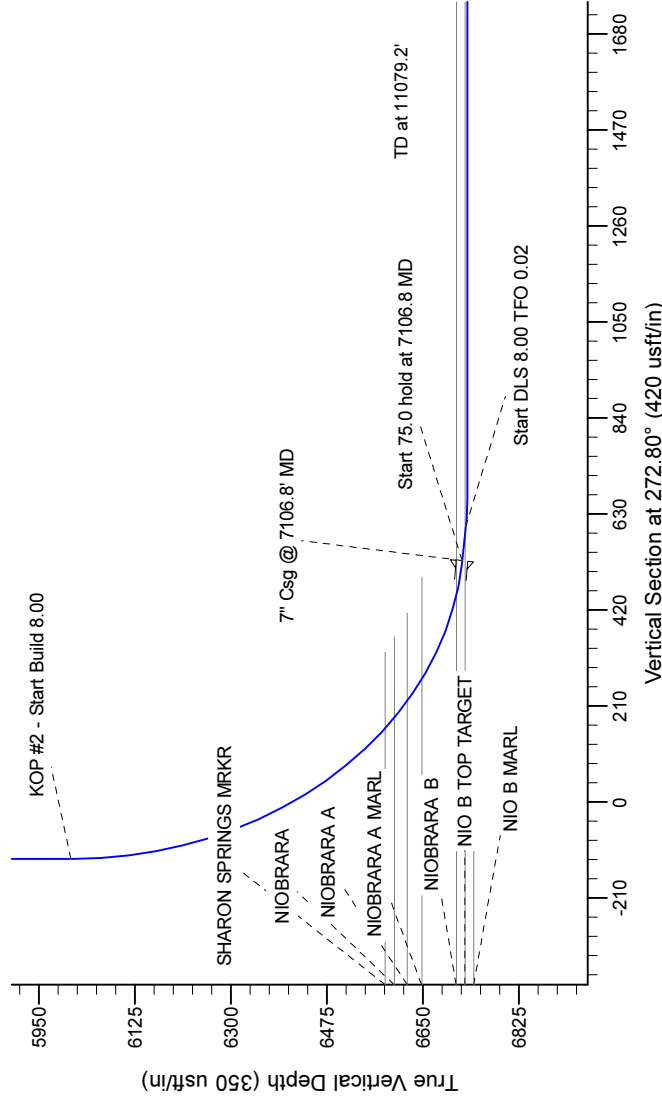


Project: Wattenberg Field  
Site: AE (Sec.6-T06N-R62W) Weld County, CO  
Well: Wells Ranch AE06-68-1HN  
Wellbore: Original Drilling  
Design: APD - Rev 0

Geodetic System: US State Plane 1983  
Datum: North American Datum 1983  
Ellipsoid: GRS 1980  
Zone: Colorado Northern Zone  
System Datum: Mean Sea Level

SECTION DETAILS										
Sec	MD	Inc	Azi	TVD	+N/S	+E/W	Dleg	TFace	VSect	Target
1	0.0	0.00	0.00	0.0	0.0	0.0	0.00	0.00	0.0	
2	2200.0	0.00	0.00	2200.0	0.0	0.0	0.00	0.00	0.0	
3	2758.9	13.97	24.37	2753.4	61.8	28.0	2.50	24.37	-24.9	
4	3602.1	13.97	24.37	3571.6	247.2	112.0	0.00	0.00	-99.8	
5	4161.0	0.00	0.00	4125.0	309.0	140.0	2.50	180.00	-124.7	
6	6044.3	0.00	0.00	6008.3	309.0	140.0	0.00	0.00	-124.7	
7	7106.8	85.00	268.89	6721.8	296.3	-513.7	8.00	268.89	527.5	
8	7181.8	85.00	268.89	6726.3	294.9	-588.4	0.00	0.00	602.1	
9	7244.3	90.00	268.89	6731.0	293.7	-650.8	8.00	0.02	664.3	
10	11079.2	90.00	268.89	6731.0	219.5	-4485.0	0.00	0.00	4490.3	



WELL DETAILS: Wells Ranch AE06-68-1HN	
Northing 1434114.08	Easting 3317826.15
Ground Level: 4932.0	
Latitude 40.519420	Longitude -104.356790
Plan: APD - Rev 0 (Wells Ranch AE06-68-1HN)Original Drilling	
Created By: Carrie Willers	Date: 17:23, March 01 2012