

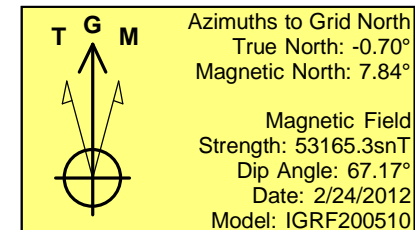
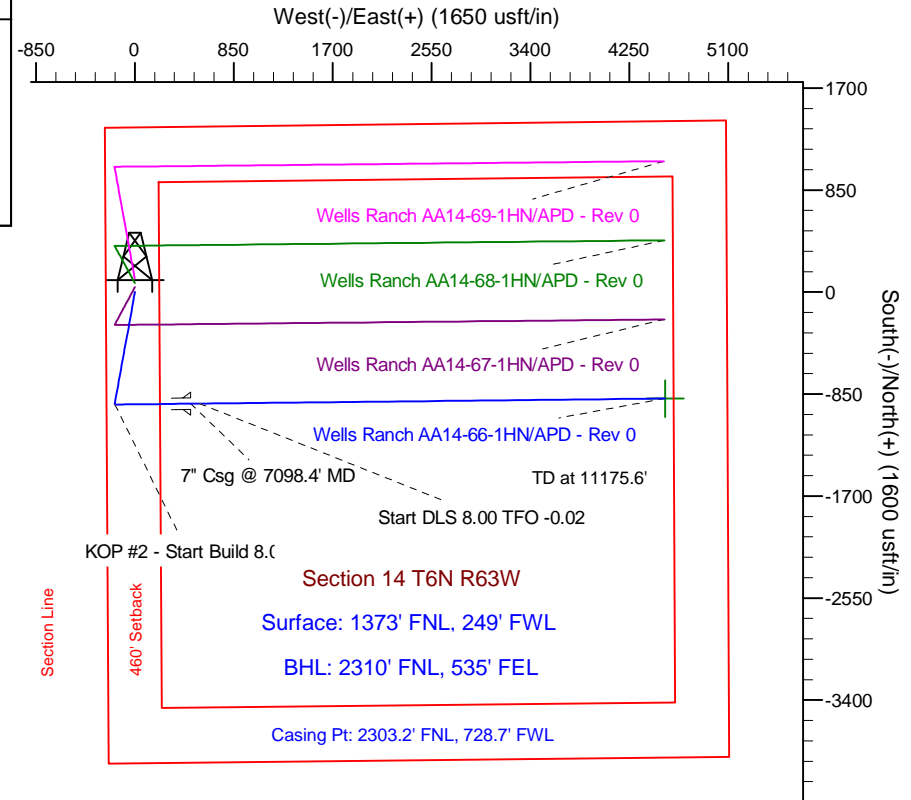
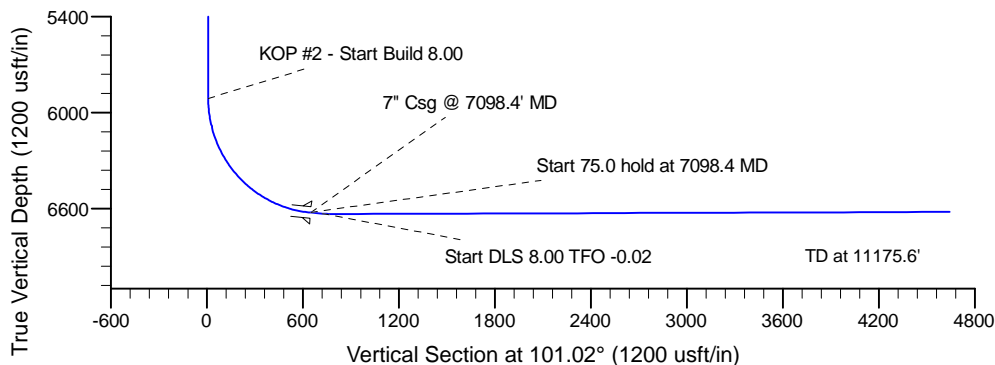
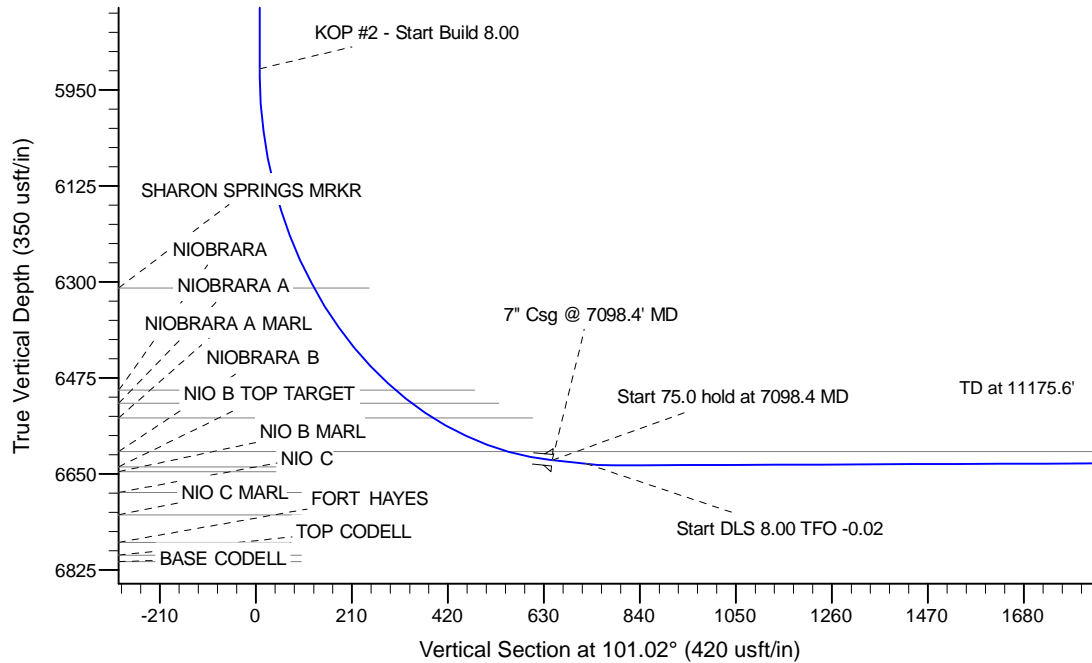
Project: Wattenberg Field
 Site: AA (Sec.14-T06N-R63W) Weld County, CO
 Well: Wells Ranch AA14-66-1HN
 Wellbore: Original Drilling
 Design: APD - Rev 0

Northern Region Drilling

Geodetic System: US State Plane 1983
 Datum: North American Datum 1983
 Ellipsoid: GRS 1980
 Zone: Colorado Northern Zone
 System Datum: Mean Sea Level

SECTION DETAILS

Sec	MD	Inc	Azi	TVD	+N-/S	+E-/W	Dleg	TFace	VSec	Target
1	0.0	0.00	0.00	0.0	0.0	0.0	0.00	0.00	0.0	
2	1200.0	0.00	0.00	1200.0	0.0	0.0	0.00	0.00	0.0	
3	1832.9	15.82	190.52	1824.8	-85.4	-15.9	2.50	190.52	0.8	
4	4691.5	15.82	190.52	4575.2	-851.6	-158.1	0.00	0.00	7.6	
5	5324.3	0.00	0.00	5200.0	-937.0	-174.0	2.50	180.00	8.3	
6	6035.9	0.00	0.00	5911.6	-937.0	-174.0	0.00	0.00	8.3	
7	7098.4	85.00	89.40	6625.1	-930.2	479.7	8.00	89.40	648.7	
8	7173.4	85.00	89.40	6631.6	-929.4	554.5	0.00	0.00	721.9	
9	7238.4	90.20	89.40	6634.3	-928.7	619.3	8.00	-0.02	785.4	
10	11175.6	90.20	89.40	6620.8	-887.3	4556.4	0.00	0.00	4642.0	BHL Tgt 2310'FNL, 535'FEL



WELL DETAILS: Wells Ranch AA14-66-1HN			
Ground Level: 4780.0			
Northing	Easting	Latitude	Longitude
1423238.56	3302464.32	40.490100	-104.412520
Plan: APD - Rev 0 (Wells Ranch AA14-66-1HN/Original Drilling)			
Created By: Carrie Willers		Date: 15:22, February 27 2012	
OK to submit with 2A as per Noble Drilling 1/28/2012 10:22			