

T6N, R90W, 6th P.M.

QUICKSILVER RESOURCES, INC.

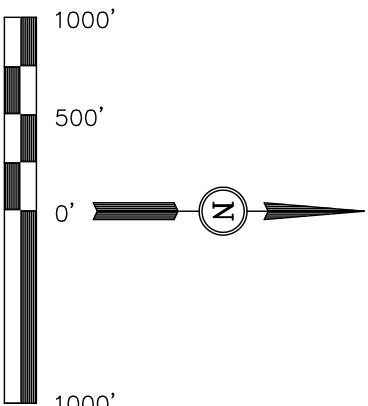
Well location, SIMOES #22-30, located as shown in the SE 1/4 NW 1/4 of Section 30, T6N, R90W, 6th P.M., Moffat County, Colorado.

BASIS OF ELEVATION

SPOT ELEVATION AT A ROAD INTERSECTION IN THE NORTH 1/2 OF SECTION 19, T6N, R90W, 6th P.M., TAKEN FROM THE CASTOR GULCH QUADRANGLE, COLORADO, MOFFAT COUNTY, 7.5 MINUTE QUAD. (TOPOGRAPHIC MAP) PUBLISHED BY THE UNITED STATES DEPARTMENT OF THE INTERIOR, GEOLOGICAL SURVEY. SAID ELEVATION IS MARKED AS BEING 6411 FEET.

BASIS OF BEARINGS

BASIS OF BEARINGS IS A G.P.S. OBSERVATION.



CERTIFICATE

THIS IS TO CERTIFY THAT THE ABOVE PLAT WAS PREPARED FROM FIELD NOTES OF ACTUAL SURVEYS MADE BY ME OR UNDER MY SUPERVISION AND THAT THE SAME ARE TRUE AND CORRECT TO THE BEST OF MY KNOWLEDGE AND BELIEF.

REGISTERED LAND SURVEYOR  
REGISTRATION NO. 143529.90  
STATE OF COLORADO

REVISED: 03-16-12

UNTAH ENGINEERING & LAND SURVEYING  
85 SOUTH 200 EAST - VERNAL, UTAH 84078  
(435) 789-1017

| SCALE      | DATE SURVEYED: | DATE DRAWN: |
|------------|----------------|-------------|
| 1" = 1000' | 02-24-12       | 03-02-12    |

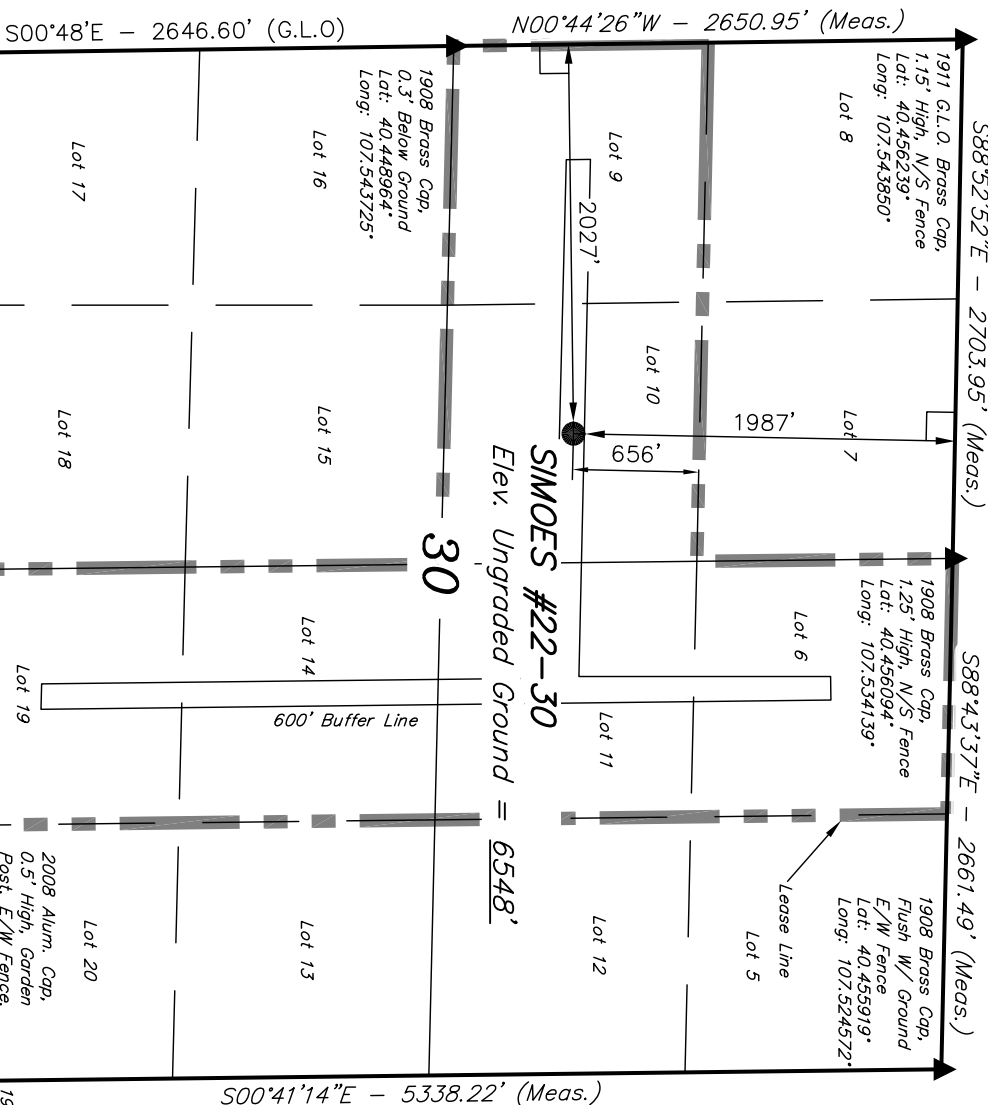
| PARTY            | REFERENCES  |
|------------------|-------------|
| G.M. K.H. S.R.L. | G.L.O. PLAT |

| WEATHER | FILE                        |
|---------|-----------------------------|
| COOL    | QUICKSILVER RESOURCES, INC. |

PDOP = 1.7

| NAD 83 (SURFACE LOCATION)              |
|----------------------------------------|
| LATITUDE = 40°27'02.44" (40.450678)    |
| LONGITUDE = 107°32'11.30" (107.536472) |
| NAD 27 (SURFACE LOCATION)              |
| LATITUDE = 40°27'02.54" (40.450706)    |
| LONGITUDE = 107°32'09.07" (107.535853) |

| STATE PLANE NAD 83          |
|-----------------------------|
| N: 1413529.90 E: 2433295.20 |
| STATE PLANE NAD 27          |
| N: 413528.89 E: 1433452.87  |



NOTE:  
SEE ADDENDUM TO LEGAL PLAT FOR  
EXISTING IMPROVEMENTS WITHIN 400'  
OF THE PROPOSED DISTURBANCE.

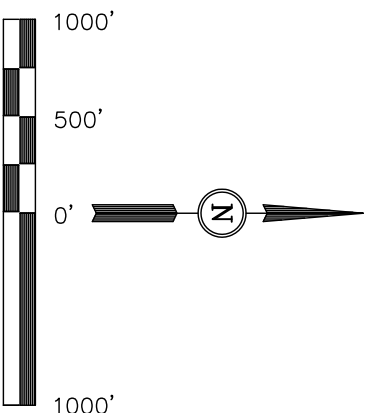
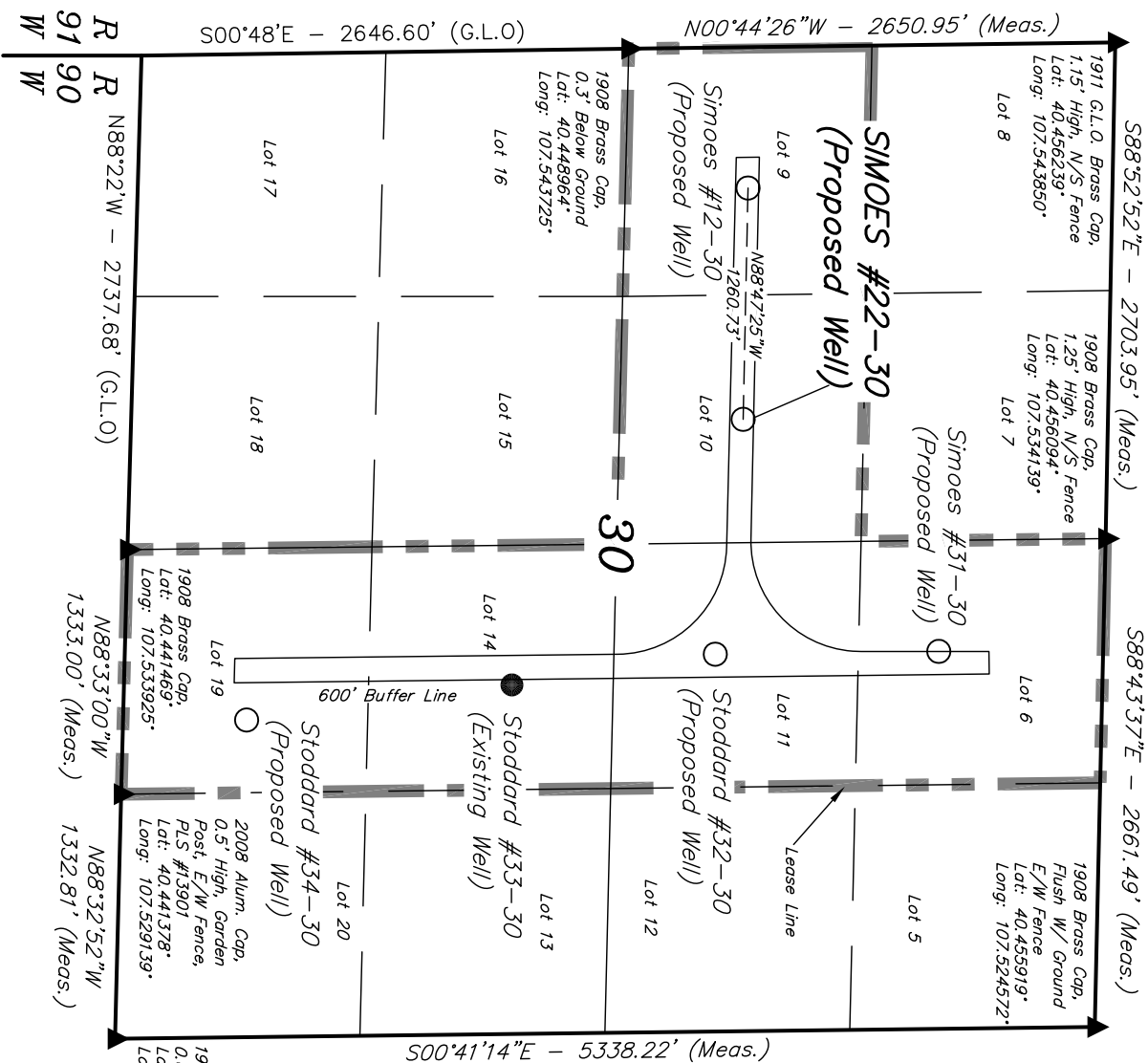
- LEGEND:
- = 90° SYMBOL
  - = PROPOSED WELL HEAD.
  - ▲ = SECTION CORNERS LOCATED.

T6N, R90W, 6th P.M.

QUICKSILVER RESOURCES, INC.

Well Location, SIMOES #22-30, located as shown in the NW 1/4 NE 1/4 of Section 30, T6N, R90W, 6th P.M., Moffat County, Colorado.

EXHIBIT "A"



CERTIFICATE

THIS IS TO CERTIFY THAT THE ABOVE PLAT WAS PREPARED FROM FIELD NOTES OF ACTUAL SURVEYS MADE BY ME OR UNDER MY SUPERVISION AND THAT THE SAME ARE TRUE AND CORRECT TO THE BEST OF MY KNOWLEDGE AND BELIEF.

REGISTERED LAND SURVEYOR  
REGISTRATION NO. 1492  
STATE OF COLORADO  
03-16-12

UINTAH ENGINEERING & LAND SURVEYING  
85 SOUTH 200 EAST - VERNAL, UTAH 84078  
(435) 789-1017

SCALE 1" = 1000' DATE SURVEYED: 02-29-12 DATE DRAWN: 03-16-12

PARTY G.M. K.H. S.R.L. REFERENCES G.L.O. PLAT

WEATHER COOL FILE QUICKSILVER RESOURCES, INC.

LEGEND:

└─┘ = 90° SYMBOL

● = PROPOSED WELL HEAD.

▲ = SECTION CORNERS LOCATED.

# QUICKSILVER RESOURCES, INC.

## ADDENDUM TO LEGAL PLAT FOR

SIMOES #22-30

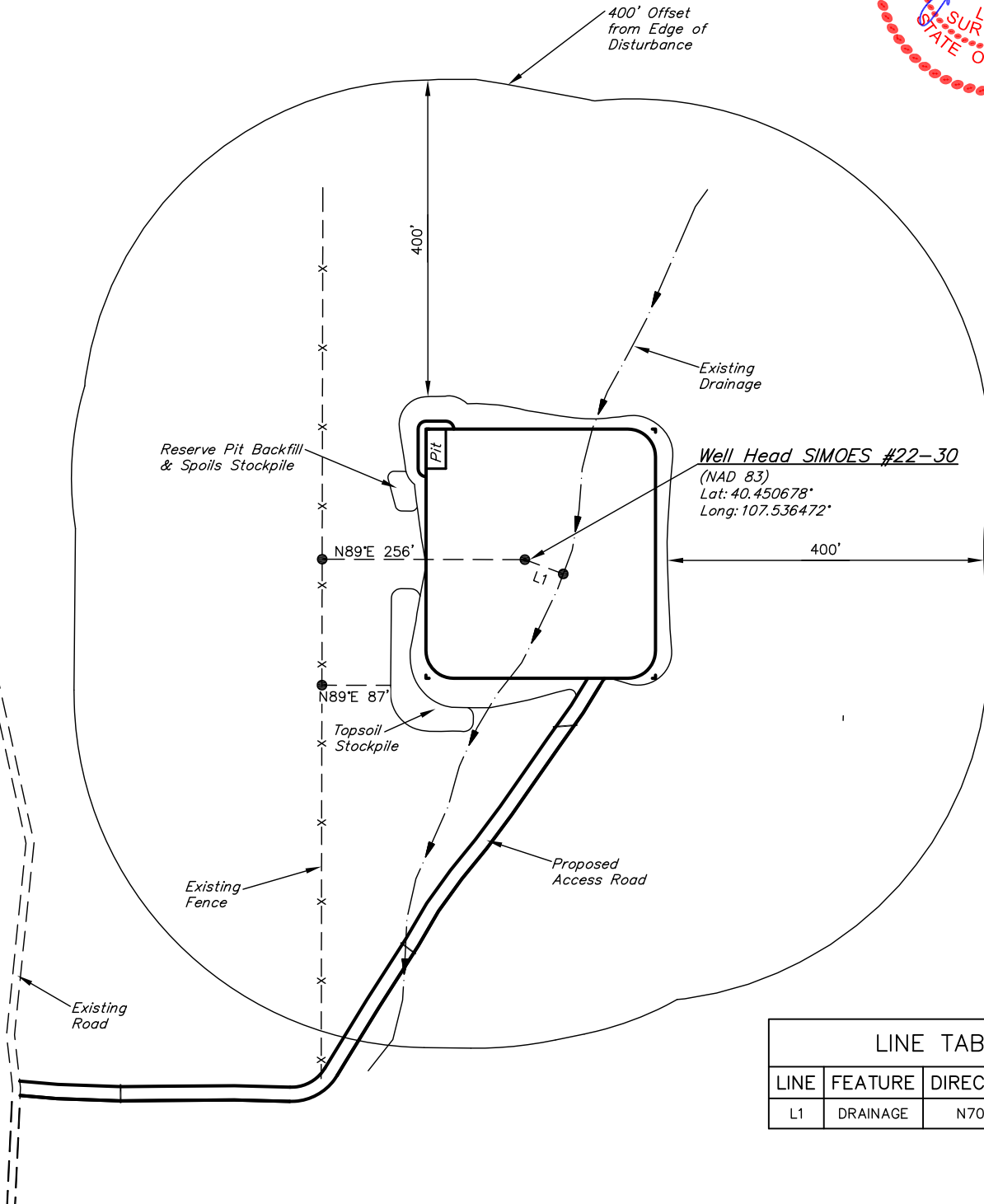
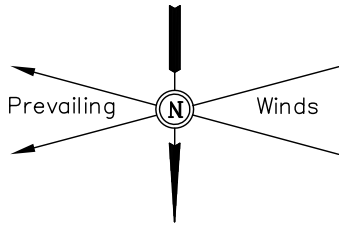
SECTION 30, T6N, R90W, 6th P.M.

1987' FNL 2027' FWL

SCALE: 1" = 200'

DATE: 03-05-12

DRAWN BY: S.R.L.



LINE TABLE

| LINE | FEATURE  | DIRECTION | LENGTH |
|------|----------|-----------|--------|
| L1   | DRAINAGE | N70°W     | 52'    |

UINTAH ENGINEERING & LAND SURVEYING

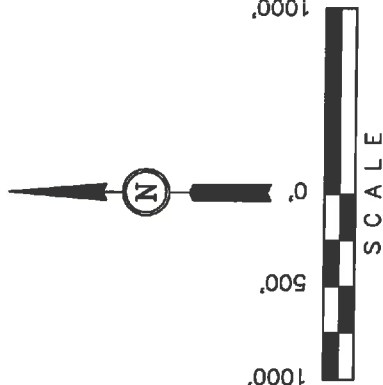
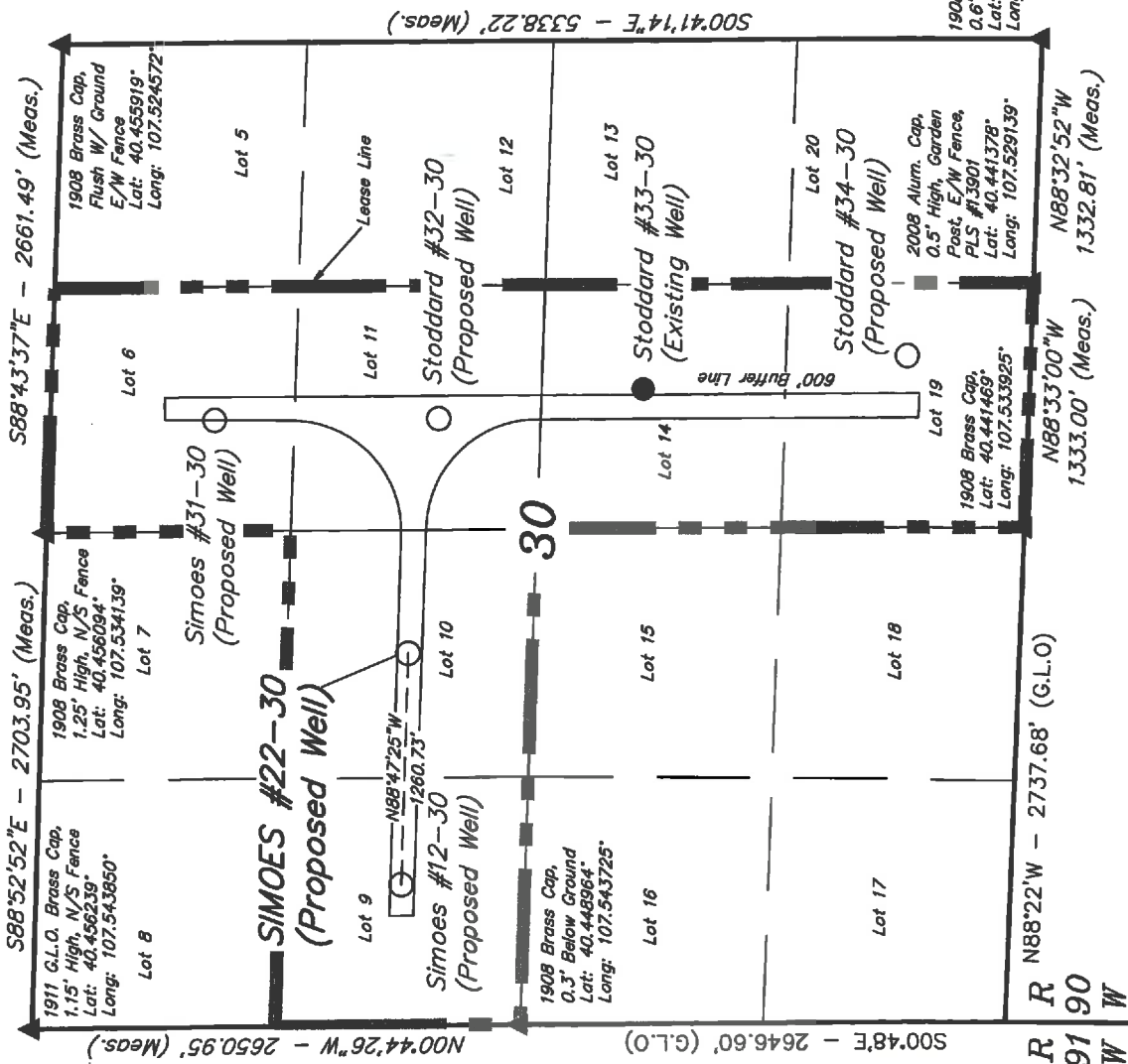
85 So. 200 East \* Vernal, Utah 84078 \* (435) 789-1017

# T6N, R90W, 6th P.M.

## QUICKSILVER RESOURCES, INC.

Well Location, SIMOES #22-30, located as shown in the NW 1/4 NE 1/4 of Section 30, T6N, R90W, 6th P.M., Moffat County, Colorado.

EXHIBIT "A"



**CERTIFICATE**

THIS IS TO CERTIFY THAT THE ABOVE PLAT WAS PREPARED FROM FIELD NOTES OF ACTUAL SURVEYS MADE BY ME OR UNDER MY SUPERVISION AND THAT THE SAME ARE TRUE AND CORRECT TO THE BEST OF MY KNOWLEDGE AND BELIEF.

REGISTERED LAND SURVEYOR  
STATE OF COLORADO  
REGISTRATION NO. 17432  
EXPIRATION DATE 03-16-12

*[Signature]*

|                                                |                            |
|------------------------------------------------|----------------------------|
| <b>UNTAEH ENGINEERING &amp; LAND SURVEYING</b> |                            |
| 85 SOUTH 200 EAST - VERNAL, UTAH 84078         |                            |
| (436) 789-1017                                 |                            |
| SCALE<br>1" = 1000'                            | DATE SURVEYED:<br>02-29-12 |
| PARTY<br>G.M. K.H. S.R.L.                      | DATE DRAWN:<br>03-16-12    |
| WEATHER<br>COOL                                | REFERENCES<br>G.L.O. PLAT  |
| FILE<br>QUICKSILVER RESOURCES, INC.            |                            |

- LEGEND:**
- = 90° SYMBOL
  - = PROPOSED WELL HEAD.
  - ▲ = SECTION CORNERS LOCATED.