

**CHEVRON - MID-CONTINENT EBIZ
11111 S WILCREST DR - DO NOT MAIL
HOUSTON, Texas**

SKR
SKR 598-36-BV-12

H&P 316/H&P/316

Post Job Summary

Cement Production Casing

Prepared for: VAIBHAV SHARMA
Date Prepared: 4/1/09
Version: 1

Service Supervisor: CARTER, ERIC

Submitted by:

HALLIBURTON

The Road to Excellence Starts with Safety

Sold To #: 338668		Ship To #: 2695487		Quote #:		Sales Order #: 6585533	
Customer: CHEVRON - MID-CONTINENT EBIZ				Customer Rep: VAIBHAV SHARMA			
Well Name: SKR			Well #: 598-36-BV-12			API/UWI #: 05-045-16943	
Field: PICEANCE		City (SAP): PARACHUTE		County/Parish: Garfield		State: Colorado	
Lat: N 39.567 deg. OR N 39 deg. 33 min. 59.951 secs.				Long: W 108.347 deg. OR W -109 deg. 39 min. 12.323 secs.			
Contractor: H&P 316			Rig/Platform Name/Num: H&P 316				
Job Purpose: Cement Production Casing							
Well Type: Development Well			Job Type: Cement Production Casing				
Sales Person: DUNNING, DUSTIN			Srv Supervisor: CARTER, ERIC			MBU ID Emp #: 345598	

Job Personnel

HES Emp Name	Exp Hrs	Emp #	HES Emp Name	Exp Hrs	Emp #	HES Emp Name	Exp Hrs	Emp #
ANDERSON, ADAM S	7.5	456683	CARTER, ERIC Earl	7.5	345598	CREECH, STEVEN Michael	7.5	420183
KUKUS, CHRISTOPHER A	7.5	413952	LOCKLEAR, BRANDON Nakya	7.5	445806	MAYO, MARK Eaton	7.5	314204
ROSS, CHARLES Raymond	7.5	453128	ANDREW, WILKE	7.5				

Equipment

HES Unit #	Distance-1 way	HES Unit #	Distance-1 way	HES Unit #	Distance-1 way	HES Unit #	Distance-1 way
10296148C	120 mile	10719775	120 mile	10867304	120 mile	10988978	120 mile
10998054	120 mile	11164591	120 mile				

Job Hours

Date	On Location Hours	Operating Hours	Date	On Location Hours	Operating Hours	Date	On Location Hours	Operating Hours
3/31/09	1	0	4/1/09	6.5	4			

TOTAL Total is the sum of each column separately

Job

Formation Name	Formation Depth (MD)	Top	Bottom	6418 FT.	Called Out	Date	Time	Time Zone
Form Type		BHST			On Location	31 - Mar - 2009	19:30	MST
Job depth MD	6445. ft	Job Depth TVD	6445. ft		Job Started	01 - Apr - 2009	03:06	MST
Water Depth		Wk Ht Above Floor	5. ft		Job Completed	01 - Apr - 2009	04:44	MST
Perforation Depth (MD)	From	To			Departed Loc	01 - Apr - 2009	06:30	MST

Well Data

Description	New / Used	Max pressure psig	Size in	ID in	Weight lbm/ft	Thread	Grade	Top MD ft	Bottom MD ft	Top TVD ft	Bottom TVD ft
-------------	------------	-------------------	---------	-------	---------------	--------	-------	-----------	--------------	------------	---------------

Sales/Rental/3rd Party (HES)

Description	Qty	Qty uom	Depth	Supplier
PLUG,CMTG,TOP,4 1/2,HWE,3.65 MIN/4.14 MA	1	EA		
ADC (AUTO DENSITY CTRL) SYS, /JOB,ZI	1	JOB		
PORT. DAS W/CEMWIN;ACQUIRE W/HES, ZI	1	JOB		

Tools and Accessories

Type	Size	Qty	Make	Depth	Type	Size	Qty	Make	Depth	Type	Size	Qty	Make
Guide Shoe					Packer					Top Plug	4.5	1	
Float Shoe					Bridge Plug					Bottom Plug			
Float Collar					Retainer					SSR plug set			
Insert Float										Plug Container	4.5	1	
Stage Tool										Centralizers			

Miscellaneous Materials

Gelling Agt	Conc	Surfactant	Conc	Acid Type	Qty	Conc	%
Treatment Fld	Conc	Inhibitor	Conc	Sand Type	Size	Qty	

Fluid Data									
Stage/Plug #: 1									
Fluid #	Stage Type	Fluid Name	Qty	Qty uom	Mixing Density lbm/gal	Yield ft ³ /sk	Mix Fluid Gal/sk	Rate bbl/min	Total Mix Fluid Gal/sk
1	FRESH WATER Spacer	FRESH WATER	30	bbl	8.33	.0	.0	4	
1	Polyflake Spacer		20	bbl	8.33	.0	.0	6	
2	Lead Cement	VARICEM (TM) CEMENT (452009)	380	sacks	12.8	1.6	7.31	6	
3	Tail Cement	VARICEM (TM) CEMENT (452009)	635	sacks	13.2	1.47	6.32	6	
4	KCL DISPLACEMENT		98.7	bbl	8.4	.0	.0	8	
Calculated Values		Pressures		Volumes					
Displacement	98.7	Shut In: Instant		Lost Returns	NONE	Cement Slurry	174.5	Pad	
Top Of Cement		5 Min		Cement Returns	NONE	Actual Displacement	98.7	Treatment	
Frac Gradient		15 Min		Spacers	50	Load and Breakdown		Total Job	423.2
Rates									
Circulating	RIG	Mixing	6	Displacement	8	Avg. Job	7		
Cement Left In Pipe	Amount	48.5 ft	Reason	Shoe Joint					
Frac Ring # 1 @	ID	Frac ring # 2 @	ID	Frac Ring # 3 @	ID	Frac Ring # 4 @	ID		
The Information Stated Herein Is Correct				Customer Representative Signature					

The Road to Excellence Starts with Safety

Sold To #: 338668	Ship To #: 2695487	Quote #:	Sales Order #: 6585533
Customer: CHEVRON - MID-CONTINENT EBIZ	Customer Rep: VAIBHAV SHARMA		
Well Name: SKR	Well #: 598-36-BV-12	API/UWI #: 05-045-16943	
Field: PICEANCE	City (SAP): PARACHUTE	County/Parish: Garfield	State: Colorado
Legal Description:			
Lat: N 39.567 deg. OR N 39 deg. 33 min. 59.951 secs.		Long: W 108.347 deg. OR W -109 deg. 39 min. 12.323 secs.	
Contractor: H&P 316	Rig/Platform Name/Num: H&P 316		
Job Purpose: Cement Production Casing	Ticket Amount:		
Well Type: Development Well	Job Type: Cement Production Casing		
Sales Person: DUNNING, DUSTIN	Srv Supervisor: CARTER, ERIC	MBU ID Emp #: 345598	

Activity Description	Date/Time	Cht #	Rate bbl/min	Volume bbl		Pressure psig		Comments
				Stage	Total	Tubing	Casing	
Pre-Rig Up Safety Meeting	03/31/2009 01:20							ATTENDED BY ALL HES CREW (PINCH POINTS, TASK AT HAND, SLIPS TRIPS AND FALLS, SPILL CONTAINMENT, MUSTER AREA, LINE OF FIRE, LIFT W/LEGS)
Call Out	03/31/2009 19:30							
Depart Yard Safety Meeting	03/31/2009 20:50							ATTENDED BY ALL HES CREW, STEVEN CREECH WAS SAFETY MAN (FOLLOWING DISTANCES, LIGHTS, NO CELL PHONES, SEATBELTS, CUMMUNICATE HAZARDS, WILDLIFE WERE DISCUSSED)
Crew Leave Yard	03/31/2009 21:00							
Arrive At Loc	03/31/2009 23:00							RIG RUNNING CASING
Assessment Of Location Safety Meeting	03/31/2009 23:10							ATTENDED BY ALL HES CREW (WATCH TRAILER TRACKING, USE SPOTTER)
Other	03/31/2009 23:20							SPOT EQUIPMENT= 1 ELITE, 1 660 BULK, 2 F-350, 1 F-150
Rig-Up Equipment	04/01/2009 01:30							

Cementing Job Log

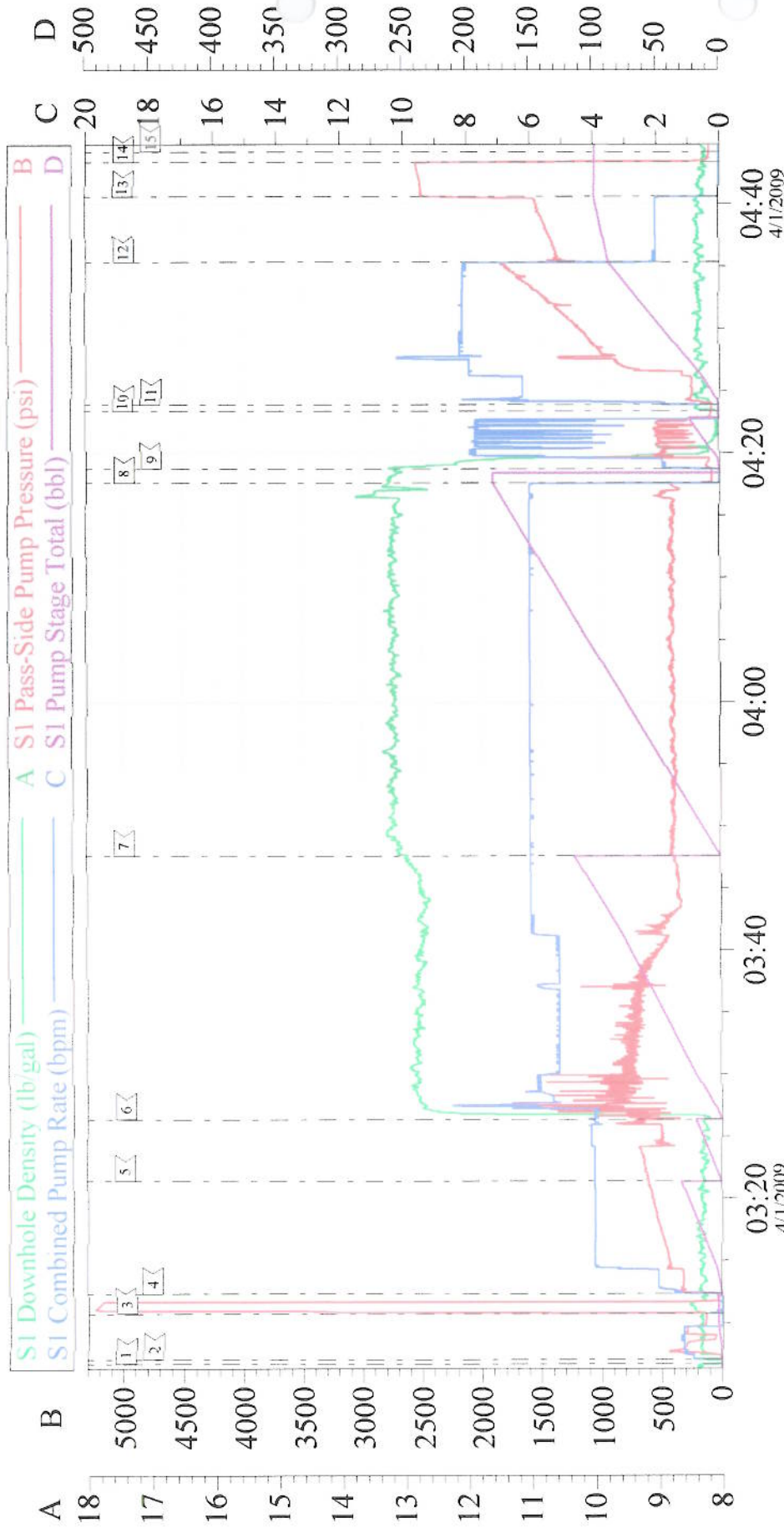
Activity Description	Date/Time	Cht #	Rate bbl/min	Volume bbl		Pressure psig		Comments
				Stage	Total	Tubing	Casing	
Pre-Job Safety Meeting	04/01/2009 02:30							ATTENDED BY ALL HES CREW, RIG CREW AND COMPANY REP
Start Job	04/01/2009 03:06							TP6418', TD 6445', SJ 48.5', FC 6369.5', MW 10.7 PPG, CASING 4.5", 11.6 #, N-80, HOLE 7.875", SURFACE CASING 8.625", 24 #, SET AT 1034'
Test Lines	04/01/2009 03:10		2	2				PRESSURED UP TO 5200 PSI, PRESSURE HELD
Pump Spacer 1	04/01/2009 03:12		4	30			600.0	FRESH WATER
Pump Spacer 2	04/01/2009 03:21		6	20			673.0	POLY-FLAKE SPACER
Pump Lead Cement	04/01/2009 03:26		6	108.3			700.0	380 SKS MIXED AT 12.8 PPG, 1.6 YIELD, 7.31 GL/SK
Pump Tail Cement	04/01/2009 03:47		6	166.2			424.0	635 SKS MIXED AT 13.2 PPG, 1.47 YIELD, 8.32 GL/SK
Shutdown	04/01/2009 04:17							
Clean Lines	04/01/2009 04:18							CLEANED LINES TO PIT
Drop Top Plug	04/01/2009 04:23							COMPANY REP VARIFIED THAT PLUG LAUNCHED
Pump Displacement	04/01/2009 04:23		8	88.7			1670.0	KCL DISPLACEMENT
Slow Rate	04/01/2009 04:35		2	10			1500.0	
Bump Plug	04/01/2009 04:40		2	98.7			2500.0	PLUG LANDED
Check Floats	04/01/2009 04:43							FLOATS HELD
End Job	04/01/2009 04:44							GOOD CIRCULATION THROUGH OUT JOB, NO CEMENT TO SURFACE

Cementing Job Log

Activity Description	Date/Time	Cht #	Rate bbl/ min	Volume bbl		Pressure psig		Comments
				Stage	Total	Tubing	Casing	
Post-Job Safety Meeting (Pre Rig-Down)	04/01/2009 04:50							ATTENDED BY ALL HES CREW (PINCH POINTS, TASK AT HAND, SLIPS TRIPS AND FALLS, SPILL CONTAINMENT, MUSTER AREA, LINE OF FIRE, LIFT W/LEGS)
Rig-Down Equipment	04/01/2009 05:00							
Depart Location Safety Meeting	04/01/2009 06:20							ATTENDED BY ALL HES CREW (FOLLOWING DISTANCES, LIGHTS, NO CELL PHONES, SEATBELTS, CUMMUNICATE HAZARDS, WILDLIFE WERE DISCUSSED)
Crew Leave Location	04/01/2009 06:30							THANK YOU FOR USING HALLIBURTON CEMENT, ERIC CARTER AND CREW.

Chevron

4 1/2" Production



Customer: CHEVRON - MID-CONTINENT
 Well Description: Skimmer Ridge 598-36-BV-12
 Company Rep: Vaibha Sharma

Job Date: 01-Apr-2009
 Job Type: Production
 Cement Supervisor: Eric Carter

Sales Order #: 6585533
 AISC Used: Yes
 Elite #/Operator: #1/Chris Kukus