

API Well No.:
SKR 598-36-BV-09

Customer Representative:
JOHNATHAN LINDSEY
Halliburton Operator:
KERRY KING
Ticket No.:
6465415

HALLIBURTON

The Road to Excellence Starts with Safety

Sold To #: 338668		Ship To #: 2695483		Quote #:		Sales Order #: 6465415	
Customer: CHEVRON - MID-CONTINENT EBIZ				Customer Rep: JOHNATHAN LINDSEY			
Well Name: SKR		Well #: 598-36-BV-09		API/UWI #: 05-045-16935			
Field: SKINNER RIDGE		City (SAP): PARACHUTE		County/Parish: Garfield		State: Colorado	
Lat: N 39.567 deg. OR N 39 deg. 34 min. 0.026 secs.				Long: W 108.347 deg. OR W -109 deg. 39 min. 12.172 secs.			
Contractor: CHEVRON		Rig/Platform Name/Num: H&P 316					
Job Purpose: Cement Production Casing							
Well Type: Development Well				Job Type: Cement Production Casing			
Sales Person: DUNNING, DUSTIN		Srv Supervisor: KING, KERRY		MBU ID Emp #: 342363			
Job Personnel							
HES Emp Name	Exp Hrs	Emp #	HES Emp Name	Exp Hrs	Emp #	HES Emp Name	Exp Hrs
BIRCH, ZEB		416898	HANSON, MARK Richard		350530	KING, KERRY Sherman	342363
SMITH, CHRISTOPHER Scott		452619					
Equipment							
HES Unit #	Distance-1 way	HES Unit #	Distance-1 way	HES Unit #	Distance-1 way	HES Unit #	Distance-1 way
10001796	120 mile	10533645	120 mile	10592964	120 mile	10829464	120 mile
10988964	120 mile	11057895	120 mile	6345	120 mile		
Job Hours							
Date	On Location Hours	Operating Hours	Date	On Location Hours	Operating Hours	Date	On Location Hours
1-27-09	7	1	1-28-09	10	6		
TOTAL		Total is the sum of each column separately					
Job				Job Times			
Formation Name				Date			
Formation Depth (MD)	Top	Bottom		Called Out	27 - Jan - 2009	11:00	MST
Form Type	BHST			On Location	27 - Jan - 2009	17:00	MST
Job depth MD	6989. ft	Job Depth TVD	6989. ft	Job Started	28 - Jan - 2009	06:14	MST
Water Depth	Wk Ht Above Floor			4. ft	Job Completed	28 - Jan - 2009	08:12
Perforation Depth (MD)	From	To		Departed Loc	28 - Jan - 2009	10:00	MST
Well Data							
Description	New / Used	Max pressure psig	Size in	ID in	Weight lbm/ft	Thread	Grade
							Top MD ft
							Bottom MD ft
							Top TVD ft
							Bottom TVD ft
Sales/Rental/3 rd Party (HES)							
Description	Qty	Qty uom	Depth	Supplier			
PLUG,CMTG,TOP,4 1/2,HWE,3.65 MIN/4.14 MA	1	EA					
PORT. DAS W/CEMWIN;ACQUIRE W/HES, ZI	1	JOB					
ADC (AUTO DENSITY CTRL) SYS, /JOB,ZI	1	JOB					
Tools and Accessories							
Type	Size	Qty	Make	Depth	Type	Size	Qty
Guide Shoe					Packer		
Float Shoe					Bridge Plug		
Float Collar					Retainer		
Insert Float							
Stage Tool							
					Top Plug	4.5	1
					Bottom Plug		
					SSR plug set		
					Plug Container	4.5	1
					Centralizers	4.5	45
Miscellaneous Materials							
Gelling Agt		Conc		Surfactant		Conc	
Treatment Fld		Conc		Inhibitor		Conc	
					Acid Type		Qty
					Sand Type		Size
							Conc
							%

HALLIBURTON**Cementing Job Summary**

Fluid Data									
Stage/Plug #: 1									
Fluid #	Stage Type	Fluid Name	Qty	Qty uom	Mixing Density lbm/gal	Yield ft ³ /sk	Mix Fluid Gal/sk	Rate bbl/min	Total Mix Fluid Gal/sk
1	Dyed Polyflake Spacer		50	bbl	8.33	.0	.0	.0	
2	Lead Cement	VARICEM (TM) CEMENT (452009)	351	sacks	12.8	1.6	7.31		
3	Tail Cement	VARICEM (TM) CEMENT (452009)	746	sacks	13.2	1.47	6.32		
4	KCL DISPLACEMENT		107.6	bbl	8.4	.0	.0	.0	
Calculated Values		Pressures		Volumes					
Displacement		Shut In: Instant		Lost Returns		Cement Slurry		Pad	
Top Of Cement		5 Min		Cement Returns		Actual Displacement		Treatment	
Frac Gradient		15 Min		Spacers		Load and Breakdown		Total Job	
Rates									
Circulating		Mixing	8	Displacement	8	Avg. Job			8
Cement Left In Pipe	Amount	45.5 ft	Reason	Shoe Joint					
Frac Ring # 1 @	ID	Frac ring # 2 @	ID	Frac Ring # 3 @	ID	Frac Ring # 4 @	ID		
The Information Stated Herein Is Correct				Customer Representative Signature					

Cementing Job Log

The Road to Excellence Starts with Safety

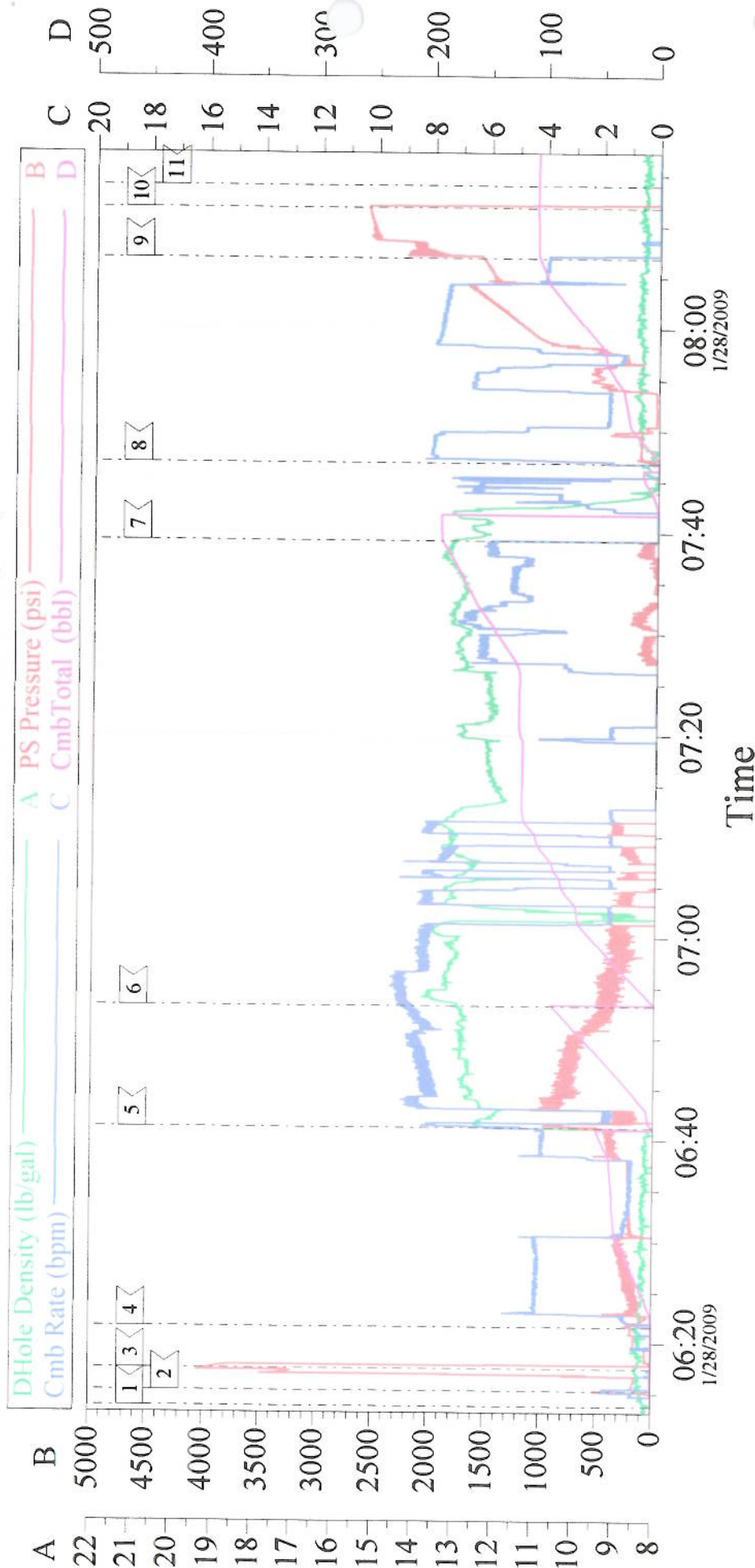
Sold To #: 338668		Ship To #: 2695483		Quote #:		Sales Order #: 6465415	
Customer: CHEVRON - MID-CONTINENT EBIZ				Customer Rep: JOHNATHAN LINDSEY			
Well Name: SKR		Well #: 598-36-BV-09		API/UWI #: 05-045-16935			
Field: SKINNER RIDGE	City (SAP): PARACHUTE	County/Parish: Garfield		State: Colorado			
Legal Description:							
Lat: N 39.567 deg. OR N 39 deg. 34 min. 0.026 secs.				Long: W 108.347 deg. OR W -109 deg. 39 min. 12.172 secs.			
Contractor: CHEVRON		Rig/Platform Name/Num: H&P 316					
Job Purpose: Cement Production Casing						Ticket Amount:	
Well Type: Development Well		Job Type: Cement Production Casing					
Sales Person: DUNNING, DUSTIN		Srv Supervisor: KING, KERRY		MBU ID Emp #: 342363			

Activity Description	Date/Time	Cht #	Rate bbl/min	Volume bbl		Pressure psig		Comments
				Stage	Total	Tubing	Casing	
Arrive at Location from Service Center	01/27/2009 17:00							CEMENT CREW WAS 2 HOURS EARLY TO LOCATION. RIG WAS APPROXIMATELY 1800FT INTO HOLE WITH CASING WHEN CREW ARRIVED.
Assessment Of Location Safety Meeting	01/27/2009 17:15							TP 6989, TD 7019, 45.5 FT SHOE JOINT. 4 1/2" 11.6 #/FT N-80 CASING. 7 7/8" HOLE. 11.8PPG MUD WIEGHT. 45 CENTRALIZERS USED ON CASING STRING.
Pre-Job Safety Meeting	01/28/2009 05:30							PLUG CONTAINER WAS 4 FT OFF RIG FLOOR DURING CEMENTING. PIPE WAS NOT RECIPROCATED DURING CEMENTING OR CIRCULATION. WELL WAS CIRCULATED FOR 1.5 HOURS PRIOR TO CEMENTING.
Start Job	01/28/2009 06:14							
Test Lines	01/28/2009 06:16						4000.0	
Pump Spacer	01/28/2009 06:19		4	50			439.0	FRESH WATER RED DYE AND 5 LBS OF POLYFLAKE IN LAST 20 BBLS.

Cementing Job Log

Activity Description	Date/Time	Cht #	Rate bbl/ min	Volume bbl		Pressure psig		Comments
				Stage	Total	Tubing	Casing	
Pump Lead Cement	01/28/2009 06:40		8	91			381.0	315 SKS @ 12.8PPG, 1.60 YLD, 7.31 GAL/SK
Pump Tail Cement	01/28/2009 06:54		8	192			300.0	746 SKS @ 13.2PPG, 1.47 YLD, 6.32 GAL/SK
Shutdown	01/28/2009 07:40							WASH PUMPS AND LINES TO PIT
Drop Plug	01/28/2009 07:46							PLUG LAUNCHED
Pump Displacement	01/28/2009 07:46		8				1100. 0	FRESHWATER WITH 75 LBS OF KCL PER 10 BBL TANK.
Bump Plug	01/28/2009 08:08		4	108			2500. 0	SLOW RATE 10 BBLS PRIOR TO REACHING CALCULATED DISPLACEMENT
Check Floats	01/28/2009 08:13							FLOAT HOLDING. GOOD RETURNS DURING JOB.
End Job	01/28/2009 08:15							THANK YOU, KERRY KING AND CREW.

4 1/2" PRODUCTION



1	START JOB	06:13:47	2	PRIME LINES	06:15:19
3	TEST LINES	06:17:30	4	PUMP SPACER	06:21:36
5	PUMP LEAD CEMENT	06:41:15	6	PUMP TAIL CEMENT	06:53:15
7	SHUT DOWN, WASH PUMPS AND LINES	07:39:11	8	DROP PLUG, START DISPLACEMENT	07:46:49
9	BUMP PLUG	08:06:49	10	CHECK FLOAT	08:11:47
11	END JOB	08:13:58			

Customer:	CHEVRON	Job Date:	1-28-2009	Ticket #:	6465415
OPERATOR	ZEB BIRCH	CEMENTER	KERRY KING	ADC YES/NO	NO
PUMP TRUCK	TC-4 #2	WELL/LEASE	SKR 598-36-BV-09	CO REP:	JOHNATHAN LINDSEY