



CHEVRON - MID-CONTINENT EBIZ

SKR 598-36-BV-08
SKINNER RIDGE
Garfield County , Colorado

Cement Production Casing

12-Apr-2009

Job Site Documents

The Road to Excellence Starts with Safety

Sold To #: 338668	Ship To #: 2695482	Quote #:	Sales Order #: 6589452
Customer: CHEVRON - MID-CONTINENT EBIZ	Customer Rep: DOHERTY, ED		
Well Name: SKR	Well #: 598-36-BV-08	API/UWI #:	
Field: SKINNER RIDGE	City (SAP): PARACHUTE	County/Parish: Garfield	State: Colorado
Contractor: H&P 316	Rig/Platform Name/Num: H&P 316		
Job Purpose: Cement Production Casing			
Well Type: Development Well	Job Type: Cement Production Casing		
Sales Person: DUNNING, DUSTIN	Srv Supervisor: NELSON, RYAN	MBU ID Emp #: 386514	

Job Personnel

HES Emp Name	Exp Hrs	Emp #	HES Emp Name	Exp Hrs	Emp #	HES Emp Name	Exp Hrs	Emp #
DUBON, TODD N	8	443351	GREGORY, JON D	8	439067	LANE, R Michael	8	445002
NELSON, RYAN Cody	8	386514	OLDS, RYAN John	8	418018	SAUTER, MARK A	8	410526
YOUNG, JEREMY R	8	418013						

Equipment

HES Unit #	Distance-1 way	HES Unit #	Distance-1 way	HES Unit #	Distance-1 way	HES Unit #	Distance-1 way
10001431	60 mile	10025012C	60 mile	10567589C	60 mile	10624108	60 mile
10951245	60 mile	10995027	60 mile				

Job Hours

Date	On Location Hours	Operating Hours	Date	On Location Hours	Operating Hours	Date	On Location Hours	Operating Hours
TOTAL								

Total is the sum of each column separately

Job

Formation Name	Formation Depth (MD)	Top	Bottom	Form Type	Job depth MD	Job Depth TVD	Water Depth	Perforation Depth (MD)	From	To
				BHST	7455. ft	7455. ft				
							Wk Ht Above Floor			4. ft

Job Times

	Date	Time	Time Zone
Called Out	11 - Apr - 2009	14:30	MST
On Location	11 - Apr - 2009	18:30	MST
Job Started	11 - Apr - 2009	23:05	MST
Job Completed	12 - Apr - 2009	00:55	MST
Departed Loc	12 - Apr - 2009	02:30	MST

Well Data

Description	New / Used	Max pressure psig	Size in	ID in	Weight lbm/ft	Thread	Grade	Top MD ft	Bottom MD ft	Top TVD ft	Bottom TVD ft
Open Hole				7.875				1397.	7455.		
Production Casing	New		4.5	4.	11.6		P-110		7428.		
Surface Casing			9.625	8.921	36.				1397.		

Sales/Rental/3rd Party (HES)

Description	Qty	Qty uom	Depth	Supplier
PLUG,CMTG,TOP,4 1/2,HWE,3.65 MIN/4.14 MA	1	EA		
ADC (AUTO DENSITY CTRL) SYS, /JOB,ZI	1	JOB		
PORT. DAS W/CEMWIN,ACQUIRE W/HES, ZI	1	JOB		

Tools and Accessories

Type	Size	Qty	Make	Depth	Type	Size	Qty	Make	Depth	Type	Size	Qty	Make
Guide Shoe					Packer					Top Plug	4.5	1	HES
Float Shoe					Bridge Plug					Bottom Plug			
Float Collar					Retainer					SSR plug set			
Insert Float										Plug Container	4.5	1	HES
Stage Tool										Centralizers			

Miscellaneous Materials										
Gelling Agt	Conc	Surfactant	Conc	Acid Type	Qty	Conc	%			
Treatment Fld	Conc	Inhibitor	Conc	Sand Type	Size	Qty				
Fluid Data										
Stage/Plug #: 1										
Fluid #	Stage Type	Fluid Name	Qty	Qty uom	Mixing Density lbm/gal	Yield ft ³ /sk	Mix Fluid Gal/sk	Rate bbl/min	Total Mix Fluid Gal/sk	
1	TUNED SPACER		50.00	bbl	11.6	.0	.0	.0		
2	Lead Cement	VARICEM (TM) CEMENT (452009)	405.0	sacks	12.8	1.6	7.31			
3	Tail Cement	VARICEM (TM) CEMENT (452009)	735.0	sacks	13.2	1.47	6.32			
4	KCL DISPLACEMENT		114.50	bbl	8.43	.0	.0	.0		
Calculated Values			Pressures		Volumes					
Displacement	114.5	Shut In: Instant		Lost Returns	No	Cement Slurry	307.8	Pad		
Top Of Cement		5 Min		Cement Returns	No	Actual Displacement	114.5	Treatment		
Frac Gradient		15 Min		Spacers		Load and Breakdown		Total Job		
Rates										
Circulating		Mixing	7	Displacement	8	Avg. Job	7			
Cement Left In Pipe	Amount 42.5 ft	Reason	Shoe Joint							
Frac Ring # 1 @	ID	Frac ring # 2 @	ID	Frac Ring # 3 @	ID	Frac Ring # 4 @	ID			
The Information Stated Herein Is Correct				Customer Representative Signature						

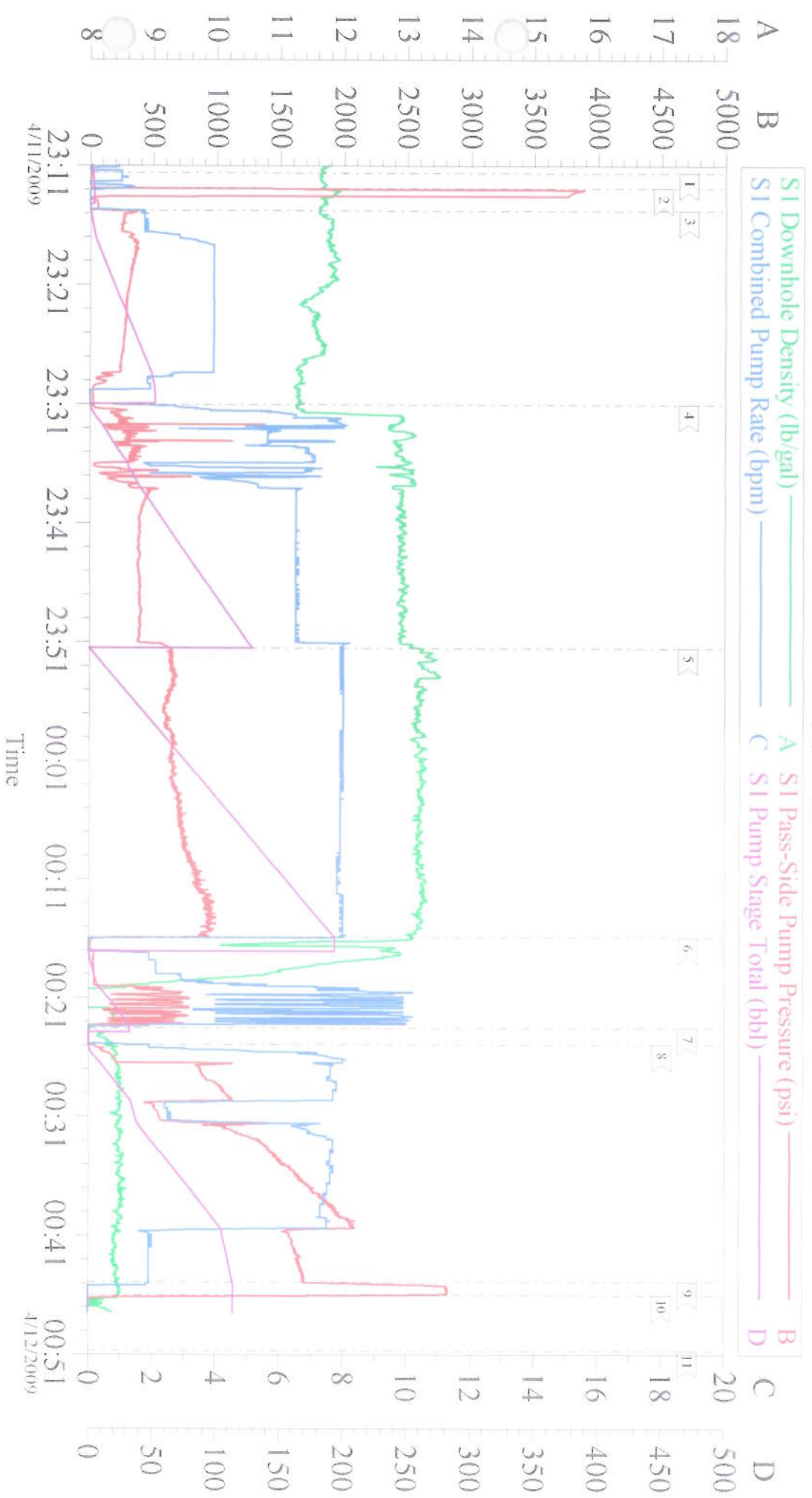
The Road to Excellence Starts with Safety

Sold To #: 338668	Ship To #: 2695482	Quote #:	Sales Order #: 6589452
Customer: CHEVRON - MID-CONTINENT EBIZ	Customer Rep: DOHERTY, ED		
Well Name: SKR	Well #: 598-36-BV-08	API/UWI #:	
Field: SKINNER RIDGE	City (SAP): PARACHUTE	County/Parish: Garfield	State: Colorado
Legal Description:			
Lat:		Long:	
Contractor: H&P 316	Rig/Platform Name/Num: H&P 316		
Job Purpose: Cement Production Casing	Ticket Amount:		
Well Type: Development Well	Job Type: Cement Production Casing		
Sales Person: DUNNING, DUSTIN	Srv Supervisor: NELSON, RYAN	MBU ID Emp #: 386514	

Activity Description	Date/Time	Cht #	Rate bbl/min	Volume bbl		Pressure psig		Comments
				Stage	Total	Tubing	Casing	
Call Out	04/11/2009 14:30							
Arrive At Loc	04/11/2009 18:30							Mike Lane is safety observer, rig running casing
Pre-Rig Up Safety Meeting	04/11/2009 18:45							All HES Personnel
Rig-Up Equipment	04/11/2009 18:55							
Pre-Job Safety Meeting	04/11/2009 22:38							All personnel on location
Start Job	04/11/2009 23:06							TD-7455' TP-7428' SJ-42.5' CASING 4 1/2" 11.6 P-110 HOLE 7 7/8" MUD 10.4 9 5/8" SURFACE PIPE SET AT 1397'
Other	04/11/2009 23:07			2			235.0	Fill lines
Test Lines	04/11/2009 23:10						3900.0	
Pump Spacer 1	04/11/2009 23:13		4	50			365.0	Tuned spacer mixed at 11.6ppg, shut down at end of spacer to weight up cement
Pump Lead Cement	04/11/2009 23:31		6	115.4			400.0	405 sks 12.8 ppg 1.6 yield 7.31 gal/sk
Comment	04/11/2009 23:38							Slowed rate due to mixing problems, problems were resolved
Pump Tail Cement	04/11/2009 23:51		8	192.4			990.0	735 sks 13.2 ppg 1.47 yield 6.32 gal/sk
Shutdown	04/12/2009 00:15							
Clean Lines	04/12/2009 00:17							

Activity Description	Date/Time	Cht #	Rate bbl/ min	Volume bbl		Pressure psig		Comments
				Stage	Total	Tubing	Casing	
Drop Top Plug	04/12/2009 00:24							
Pump Displacement	04/12/2009 00:26		8	114.5			2050. 0	2% KCL water
Slow Rate	04/12/2009 00:40		2	104			1650. 0	
Bump Plug	04/12/2009 00:45		2	114.5			2800. 0	
Check Floats	04/12/2009 00:48							Floats held
End Job	04/12/2009 00:55							Well circulated prior to job. Good returns throughout the job. Pipe static during job. Thank you for using Halliburton--Ryan Nelson & Crew

Chevron Production



Local Event Log

1	Start Job	4/11/2009 23:11:36	2	Pressure Test	4/11/2009 23:12:54	3	Pump Tuned Spacer III	4/11/2009 23:14:45
4	Pump Lead Cement	4/11/2009 23:31:40	5	Pump Tail Cement	4/11/2009 23:51:29	6	Shutdown	4/12/2009 00:15:54
7	Drop Plug	4/12/2009 00:23:53	8	Pump Displacement	4/12/2009 00:24:57	9	Land Plug	4/12/2009 00:44:54
10	Check Floats	4/12/2009 00:46:02	11	Land Job	4/12/2009 00:50:40			

Customer:	CHEVRON	Job Date:	11-Apr-2009	Sales Order #:	6589452
Well Description:	SKR 598-36-BV-08	Job Type:	Production	ADC Used:	Yes
Company Rep:	Ed Doherty	Cement Supervisor:	Ryan Nelson	Elite #:	3