
CHEVRON - MID-CONTINENT EBIZ

**SKR 598-36-BV-08
SKINNER RIDGE
Garfield County , Colorado**

Cement Surface Casing
26-Mar-2009

Job Site Documents

The Road to Excellence Starts with Safety

Sold To #: 338668		Ship To #: 2695482		Quote #:		Sales Order #: 6526848	
Customer: CHEVRON - MID-CONTINENT EBIZ				Customer Rep: MOELLER, RONALD			
Well Name: SKR		Well #: 598-36-BV-08		API/UWI #: 05-045-16967			
Field: SKINNER RIDGE		City (SAP): PARACHUTE		County/Parish: Garfield		State: Colorado	
Contractor: H&P 316		Rig/Platform Name/Num: H&P 316					
Job Purpose: Cement Surface Casing							
Well Type: Development Well				Job Type: Cement Surface Casing			
Sales Person: DUNNING, DUSTIN		Srcv Supervisor: DEROSA, JAY		MBU ID Emp #: 338788			
Job Personnel							
HES Emp Name		Exp Hrs	Emp #	HES Emp Name		Exp Hrs	Emp #
DANIEL, EVERETT Dean			337325	DEROSA, JAY M			338788
PONDER, THOMAS Lynn			427112	SCOTT, DALLAS D			334750
				VANALSTYNE, TROY L			420256
Equipment							
HES Unit #	Distance-1 way	HES Unit #	Distance-1 way	HES Unit #	Distance-1 way	HES Unit #	Distance-1 way
10616651C	120 mile	10829466	120 mile	10867322	120 mile		
Job Hours							
Date	On Location Hours	Operating Hours	Date	On Location Hours	Operating Hours	Date	On Location Hours
2-26-09	8	1					
TOTAL		Total is the sum of each column separately					
Job				Job Times			
Formation Name				Date	Time	Time Zone	
Formation Depth (MD) Top Bottom				Called Out	25 - Feb - 2009	18:00	MST
Form Type				On Location	25 - Feb - 2009	22:30	MST
Job depth MD 1418. ft				Job Started	26 - Feb - 2009	06:46	MST
Water Depth				Job Completed	26 - Mar - 2009	07:34	MST
Perforation Depth (MD) From To				Departed Loc	26 - Feb - 2009	09:30	MST
Well Data							
Description	New / Used	Max pressure psig	Size in	ID in	Weight lbm/ft	Thread	Grade
							Top MD ft Bottom MD ft Top TVD ft Bottom TVD ft
Sales/Rental/3 rd Party (HES)							
Description				Qty	Qty uom	Depth	Supplier
PLUG, CMTG, TOP, 9 5/8, HWVE, 8.16 MIN/9.06 MA				1	EA		
PORT. DAS W/CEMWIN; ACQUIRE W/HES, ZI				1	JOB		
ADC (AUTO DENSITY CTRL) SYS, /JOB, ZI				1	JOB		
Tools and Accessories							
Type	Size	Qty	Make	Depth	Type	Size	Qty
Guide Shoe					Packer		
Float Shoe					Bridge Plug		
Float Collar					Retainer		
Insert Float							
Stage Tool							
Miscellaneous Materials							
Gelling Agt		Conc		Surfactant		Conc	
Treatment Fld		Conc		Inhibitor		Conc	
Acid Type			Qty	Conc %			
Sand Type			Size	Qty			

Fluid Data									
Stage/Plug #: 1									
Fluid #	Stage Type	Fluid Name	Qty	Qty uom	Mixing Density lbm/gal	Yield ft ³ /sk	Mix Fluid Gal/sk	Rate bbl/min	Total Mix Fluid Gal/sk
1	PolyFlake Dyed Spacer		30	bbl	.	.0	.0	.0	
2	Lead Cement	VERSACEM (TM) SYSTEM (452010)	160	sacks	12.3	2.38	13.75		
	2 %	CAL-SEAL 60, 50 LB BAG (101217146)							
	2 %	ECONOLITE (100001580)							
	0.3 %	VERSASET, 55 LB SK (101376573)							
	5.64 lbm	SALT, 100 LB BAG (100003652)							
	0.125 lbm	POLY-E-FLAKE (101216940)							
	0.25 %	D-AIR 3000 (101007446)							
	13.75 Gal	FRESH WATER							
3	Tail Cement	VERSACEM (TM) SYSTEM (452010)	100	sacks	12.8	2.11	11.75		
	2 %	CAL-SEAL 60, 50 LB BAG (101217146)							
	2 %	ECONOLITE (100001580)							
	0.3 %	VERSASET, 55 LB SK (101376573)							
	5.64 lbm	SALT, 100 LB BAG (100003652)							
	11.75 Gal	FRESH WATER							
4	Fresh Water Displacement		104.66	bbl	.	.0	.0	.0	
Calculated Values		Pressures		Volumes					
Displacement	104.66	Shut In: Instant		Lost Returns	no	Cement Slurry	104.5	Pad	
Top Of Cement	Surface	5 Min		Cement Returns	10bbls	Actual Displacement	104.66	Treatment	
Frac Gradient		15 Min		Spacers	30bbls	Load and Breakdown		Total Job	
Rates									
Circulating	Rig	Mixing	7	Displacement	10	Avg. Job			
Cement Left In Pipe	Amount	43 ft	Reason	Shoe Joint					
Frac Ring # 1 @	ID	Frac ring # 2 @	ID	Frac Ring # 3 @	ID	Frac Ring # 4 @	ID		
The Information Stated Herein Is Correct				Customer Representative Signature					

HALLIBURTON**Cementing Job Log***The Road to Excellence Starts with Safety*

Sold To #: 338668		Ship To #: 2695482		Quote #:		Sales Order #: 6526848	
Customer: CHEVRON - MID-CONTINENT EBIZ				Customer Rep: MOELLER, RONALD			
Well Name: SKR			Well #: 598-36-BV-08			API/UWI #: 05-045-16967	
Field: SKINNER RIDGE		City (SAP): PARACHUTE		County/Parish: Garfield		State: Colorado	
Legal Description:							
Lat: N 0 deg. OR N 0 deg. 0 min. 0 secs.				Long: E 0 deg. OR E 0 deg. 0 min. 0 secs.			
Contractor: H&P 316			Rig/Platform Name/Num: H&P 316				
Job Purpose: Cement Surface Casing						Ticket Amount:	
Well Type: Development Well				Job Type: Cement Surface Casing			
Sales Person: DUNNING, DUSTIN			Srvc Supervisor: DEROSA, JAY			MBU ID Emp #: 338788	

Activity Description	Date/Time	Cht #	Rate bbl/ min	Volume bbl		Pressure psig		Comments
				Stage	Total	Tubing	Casing	
Call Out	02/25/2009 18:00							
Pre-Convoy Safety Meeting	02/25/2009 20:30							
Arrive At Loc	02/25/2009 22:30							
Pre-Rig Up Safety Meeting	02/25/2009 22:30							
Rig-Up Equipment	02/25/2009 22:30							
Wait on Customer or Customer Sub-Contractor Equip	02/25/2009 23:00							Rig running casing.
Wait on Customer or Customer Sub-Contractor Equipm	02/26/2009 06:00							
Pre-Job Safety Meeting	02/26/2009 06:15							
Start Job	02/26/2009 06:46	1						
Test Lines	02/26/2009 06:46	2					2600. 0	
Pump Spacer	02/26/2009 06:48	3	2	30			105.0	H2O Spacer with Poly- E-Flake and Red Dye. Used rigs red dye.6x5 pressure at 11 psi
Pump Lead Cement	02/26/2009 07:01	4	7	67.8			300.0	160 sks @ 12.3 ppg 2.38 ft3/sk 13.75 gal/sk 6x5 pressure at 16 psi
Pump Tail Cement	02/26/2009 07:11	5	7	37.6			286.0	100 sks @ 12.8 ppg 2.11 ft3/sk 11.75 gal/sk 6x5 pressure at 17 psi
Drop Top Plug	02/26/2009 07:17	6						
Pump Displacement	02/26/2009 07:18	7	10				375.0	Fresh Water

Sold To #: 338668

Ship To #: 2695482

Quote #:

Sales Order #:

6526848

SUMMIT Version: 7.20.130

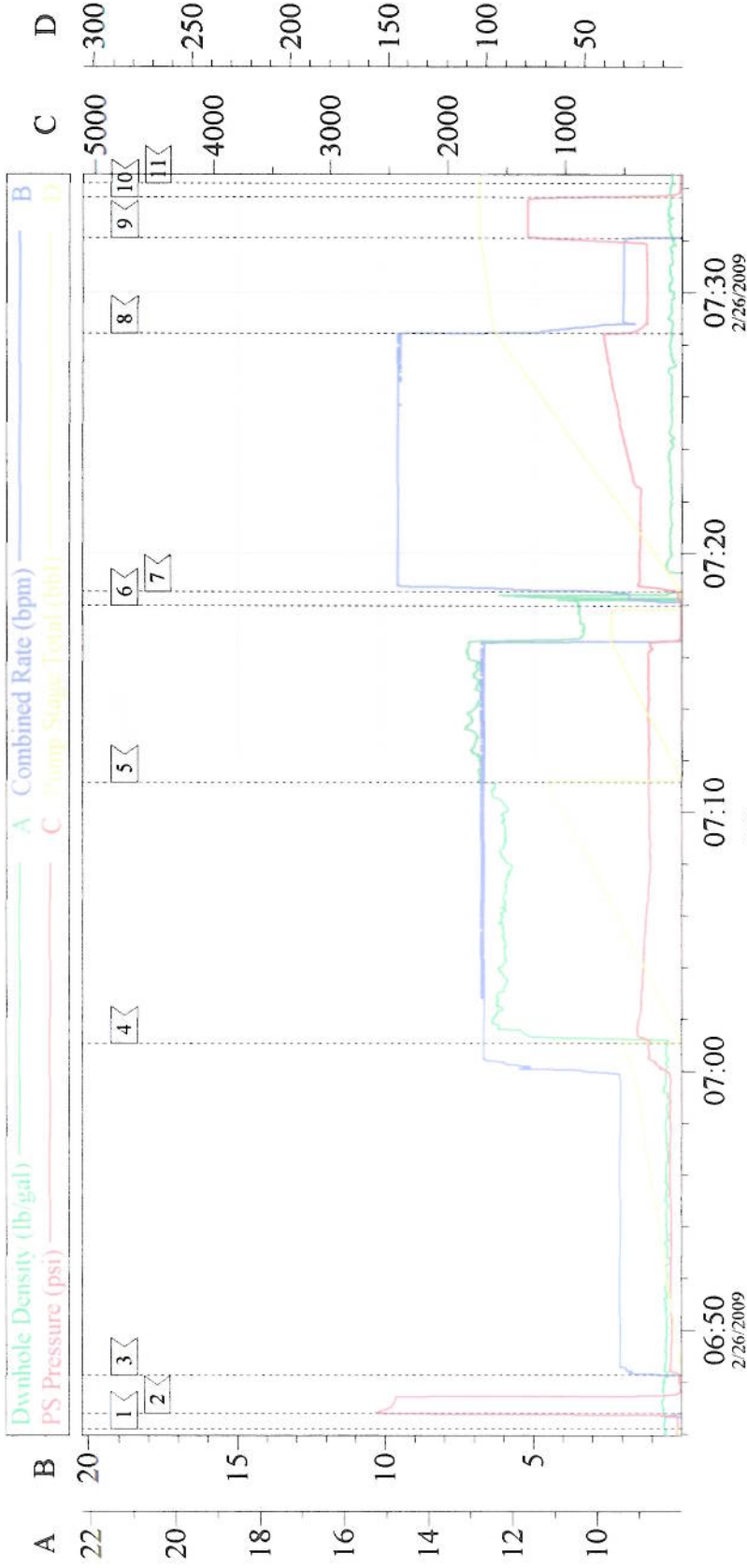
Thursday, February 26, 2009 08:29:00

Cementing Job Log

Activity Description	Date/Time	Cht #	Rate bbl/ min	Volume bbl		Pressure psig		Comments
				Stage	Total	Tubing	Casing	
Slow Rate	02/26/2009 07:28	8	2	94			315.0	
Bump Plug	02/26/2009 07:32	9	2	104.7			1317.0	Plug Down 1000 psi over per Co Rep.
Check Floats	02/26/2009 07:33	10						Floats held. Good returns throughout entire job. Pipe was not reciprocated during job. 10 bbls cement to surface.
End Job	02/26/2009 07:34	11						Thanks for using Halliburton, Jay DeRosa and crew.
Post-Job Safety Meeting (Pre Rig-Down)	02/26/2009 07:45							
Rig-Down Equipment	02/26/2009 08:00							
Pre-Convoy Safety Meeting	02/26/2009 09:30							
Depart Location for Service Center or Other Site	02/26/2009 09:30							

Signature _____

9 5/8 SURFACE



Event Log			
1 Start Job	06:46:13	2 Test Lines	06:46:49
4 Pump Lead Cement	07:01:04	5 Pump Tail Cement	07:11:09
7 Pump Displacement	07:18:31	8 Slow Rate	07:28:26
10 Check Floats	07:33:39	11 End Job	07:34:12
3 Pump H2O Spacer	06:48:17	6 Drop Top Plug	07:17:58
9 Bump Plug	07:32:05		

Customer: Chevron	Job Date: 2-26-09	Ticket #: 6526848
Well Description: 9 5/8 Surface	CEMENTER: Jay DeRosa	ADC USED: YES
LEASE: SKR Well# 598-36-BV-08	Truck Elite 4 Oper: Thomas Ponder	CO REP: Ronald Moeller

CemWin v1.7.2
26-Feb-09 07:54