
CHEVRON - MID-CONTINENT EBIZ

**SKR 598-36-BV-06
PICEANCE
Garfield County , Colorado**

Cement Production Casing
04-Apr-2009

Job Site Documents

The Road to Excellence Starts with Safety

Sold To #: 338668	Ship To #: 2695480	Quote #:	Sales Order #: 6585535
Customer: CHEVRON - MID-CONTINENT EBIZ		Customer Rep: Sharma, Vaibhav	
Well Name: SKR		Well #: 598-36-BV-06	API/UWI #:
Field: PICEANCE	City (SAP): PARACHUTE	County/Parish: Garfield	State: Colorado
Contractor: H&P 316		Rig/Platform Name/Num: H&P 316	
Job Purpose: Cement Production Casing			
Well Type: Development Well		Job Type: Cement Production Casing	
Sales Person: DUNNING, DUSTIN	Srv Supervisor: CALDWELL, JEFFREY		MBU ID Emp #: 369111

Job Personnel

HES Emp Name	Exp Hrs	Emp #	HES Emp Name	Exp Hrs	Emp #	HES Emp Name	Exp Hrs	Emp #
BANKS, BRENT A	5.5	371353	BETZ, KLAYTON Alan	5.5	446140	CALDWELL, JEFFREY S	5.5	369111
GAMBLE, BENJAMIN T	5.5	446666	GARSKA, SHAUN	4.5	413948	LITTLE, FRANKLIN D	5.5	448361
ONEAL, TALLEY	5.5	456423	REEVES, BRANDON W	5.5	287883	SMITH, DUSTIN Michael	5.5	418015
WILKE, ANDREW	5.5	398822						

Equipment

HES Unit #	Distance-1 way	HES Unit #	Distance-1 way	HES Unit #	Distance-1 way	HES Unit #	Distance-1 way
10025121	120 mile	10214529C	120 mile	10243540C	120 mile	10719782	120 mile
10822535	120 mile	10829463	120 mile	10871245	120 mile	10969711	120 mile

Job Hours

Date	On Location Hours	Operating Hours	Date	On Location Hours	Operating Hours	Date	On Location Hours	Operating Hours
04/04/09	5.5	1.5						
TOTAL			Total is the sum of each column separately					

Job

Job Times

Formation Name				Date				Time	Time Zone			
Formation Depth (MD)		Top	Bottom		Called Out				03 - Apr - 2009	20:00	MST	
Form Type		BHST		On Location				04 - Apr - 2009	02:00	MST		
Job depth MD		6437. ft		Job Depth TVD		6437. ft		Job Started		04 - Apr - 2009	03:57	MST
Water Depth				Wk Ht Above Floor		5. ft		Job Completed		04 - Apr - 2009	05:27	MST
Perforation Depth (MD)		From	To		Departed Loc				04 - Apr - 2009	07:30	MST	

Well Data

Description	New / Used	Max pressure psig	Size in	ID in	Weight lbm/ft	Thread	Grade	Top MD ft	Bottom MD ft	Top TVD ft	Bottom TVD ft
-------------	------------	-------------------	---------	-------	---------------	--------	-------	-----------	--------------	------------	---------------

Sales/Rental/3rd Party (HES)

Description	Qty	Qty uom	Depth	Supplier
PLUG,CMTG,TOP,4 1/2,HWE,3.65 MIN/4.14 MA	1	EA		
PORT. DAS W/CEMWIN;ACQUIRE W/HES, ZI	1	JOB		
ADC (AUTO DENSITY CTRL) SYS, /JOB,ZI	1	JOB		

Tools and Accessories

Type	Size	Qty	Make	Depth	Type	Size	Qty	Make	Depth	Type	Size	Qty	Make
Guide Shoe					Packer					Top Plug	4.5	1	
Float Shoe					Bridge Plug					Bottom Plug			
Float Collar					Retainer					SSR plug set			
Insert Float										Plug Container	4.5	1	
Stage Tool										Centralizers			

Miscellaneous Materials

Gelling Agt	Conc	Surfactant	Conc	Acid Type	Qty	Conc	%
Treatment Fld	Conc	Inhibitor	Conc	Sand Type	Size	Qty	

HALLIBURTON***Cementing Job Summary***

Fluid Data										
Stage/Plug #: 1										
Fluid #	Stage Type	Fluid Name	Qty	Qty uom	Mixing Density lbm/gal	Yield ft ³ /sk	Mix Fluid Gal/sk	Rate bbl/min	Total Mix Fluid Gal/sk	
1	Dyed Polyflake Spacer		6	bbl	8.33	.0	.0	.0		
2	Lead Cement	VARICEM (TM) CEMENT (452009)	388	sacks	12.8	1.6	7.31	6.0		
3	Tail Cement	VARICEM (TM) CEMENT (452009)	637	sacks	13.2	1.47	6.32	6.0		
4	KCL DISPLACEMENT		98.6	bbl	8.4	.0	.0	8.0		
Calculated Values		Pressures		Volumes						
Displacement	98.6	Shut In: Instant		Lost Returns	0	Cement Slurry	287.6	Pad		
Top Of Cement	SURFACE	5 Min		Cement Returns	0	Actual Displacement	97.5	Treatment		
Frac Gradient		15 Min		Spacers	50	Load and Breakdown		Total Job	435.1	
Rates										
Circulating	6	Mixing	6	Displacement	8	Avg. Job	7			
Cement Left in Pipe	Amount	48 ft	Reason	Shoe Joint						
Frac Ring # 1 @	ID	Frac ring # 2 @	ID	Frac Ring # 3 @	ID	Frac Ring # 4 @	ID			
The Information Stated Herein Is Correct				Customer Representative Signature						

The Road to Excellence Starts with Safety

Sold To #: 338668	Ship To #: 2695480	Quote #:	Sales Order #: 6585535
Customer: CHEVRON - MID-CONTINENT EBIZ		Customer Rep: Sharma, Vaibhav	
Well Name: SKR	Well #: 598-36-BV-06	API/UWI #:	
Field: PICEANCE	City (SAP): PARACHUTE	County/Parish: Garfield	State: Colorado
Legal Description:			
Lat: N 0 deg. OR N 0 deg. 0 min. 0 secs.		Long: E 0 deg. OR E 0 deg. 0 min. 0 secs.	
Contractor: H&P 316		Rig/Platform Name/Num: H&P 316	
Job Purpose: Cement Production Casing			Ticket Amount:
Well Type: Development Well		Job Type: Cement Production Casing	
Sales Person: DUNNING, DUSTIN		Srv Supervisor: CALDWELL, JEFFREY	MBU ID Emp #: 369111

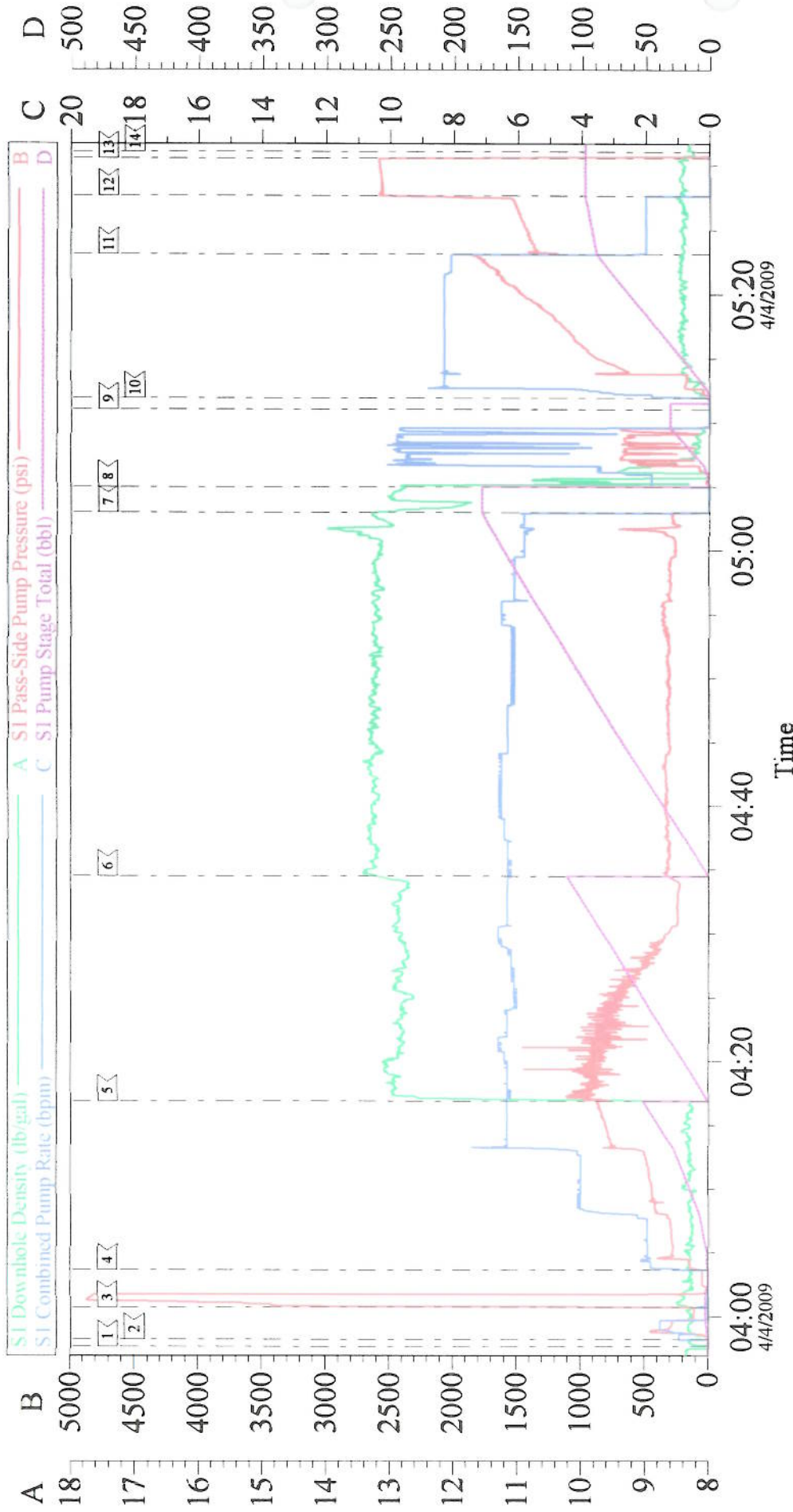
Activity Description	Date/Time	Cht #	Rate bbl/min	Volume bbl		Pressure psig		Comments
				Stage	Total	Tubing	Casing	
Call Out	04/03/2009 20:00							ELITE #12/ELITE #8 AS A BACKUP TO ELITE 12. MECHANIC ON JOB IS SHAUN GARSKA.
Pre-Convoy Safety Meeting	04/03/2009 21:45							PLUG CONTAINER #D0040
Crew Leave Yard	04/03/2009 22:00							KLAYTON BETZ IS SAFETY OBSERVER ON JOB.
Arrive At Loc	04/04/2009 02:00							CASING WAS STILL BEING RUN
Safety Meeting	04/04/2009 02:05							8 5/8" 24 LB. SURFACE PIPE SET SET AT 1021. GRADE:K-55
Rig-Up Equipment	04/04/2009 02:15							WATER SAMPLE TAKEN RESULTS AS FOLLOWS- TEMP:77 DEGREES,SULFATE:B ELOW 200,PH:7,CHLORIDE:40 0,POTASSIUM:0,IRON: 0,CALCIUM:125,TDS:88 0.
Pre-Job Safety Meeting	04/04/2009 03:30							100 UNITS OF GAS PRIOR TO JOB. RIG PUMPED AT 6 BPM. 585 PSI.
Start Job	04/04/2009 03:57							TD:6437 TP:6407 SJ:48 MUD:10.7 PPG 7 7/8" HOLE CASING GRADE:N-80
Prime Pumps	04/04/2009 03:58		1.5	2	2		450.0	H2O

Cementing Job Log

Activity Description	Date/Time	Cht #	Rate bbl/ min	Volume bbl		Pressure psig		Comments
				Stage	Total	Tubing	Casing	
Test Lines	04/04/2009 04:00					4500. 0		
Pump Spacer	04/04/2009 04:03		6	50	50		900.0	H2O WITH 5 LBS DYE AND 10 LBS POLYFLAKE IN FIRST 20 BBLS
Pump Lead Cement	04/04/2009 04:16		6	110.6	110.6		330.0	388 SKS 12.8 PPG 1.6 CUFT/SAK 7.31 GAL/SAK
Pump Tail Cement	04/04/2009 04:34		6	166.8	177		400.0	637 SKS 13.2 PPG 1.47 CUFT/SAK 6.32 GAL/SAK
Shutdown	04/04/2009 05:02							
Clean Lines	04/04/2009 05:04							H2O
Drop Top Plug	04/04/2009 05:11							PLUG AWAY
Pump Displacement	04/04/2009 05:11		8	98.6	97.5		1718. 0	KCL H2O 1.5 BAGS KCL PER 10 BBLS.
Slow Rate	04/04/2009 05:23		2	88	88		1200. 0	
Bump Plug	04/04/2009 05:27		2	98.6	97.5		2560. 0	PLUG BUMPED
Check Floats	04/04/2009 05:30							FLOATS HELD 1 BBL BACK. GOOD CIRCULATION THROUGH OUT JOB.
End Job	04/04/2009 05:31							WATER PRESSURE 38, BOOSTER PRESSURE: 3.BP GAUGE WAS NOT FUNCTIONING PROPERLY WILL REPLACE GAUGE WHEN WE GET TO YARD.
Post-Job Safety Meeting (Pre Rig-Down)	04/04/2009 05:32							
Rig-Down Equipment	04/04/2009 05:35							
Crew Leave Location	04/04/2009 07:30							THANK YOU FOR CHOOSING HALLIBURTON JEFF CALDWELL AND CREW.

Chevron

4 1/2" Production



Local Event Log			
1 START JOB	03:57:41	2 PRIME LINES	03:58:14
4 PUMP DYED SPACER	04:03:38	5 PUMP LEAD CEMENT	04:16:52
7 SHUT DOWN	05:02:58	8 WASH PUMPS & LINES	05:04:58
10 START DISPLACEMENT	05:11:55	11 SLOW RATE	05:23:08
13 CHECK FLOATS/FLOATS HELD	05:30:34	14 END JOB	05:31:05
3 TEST LINES	04:00:45	6 PUMP TAIL CEMENT	04:34:28
9 DROP TOP PLUG	05:11:02	12 LAND PLUG	05:27:39

Customer: CHEVRON - MID-CONTINENT
Well Description: Skinner Ridge 598-36-BV-06
Company Rep: Vaibhav Sharma

Job Date: 04-Apr-2009
Job Type: Production
Cement Supervisor: Jeff Caldwell

Sales Order #: 6585535
ADC Used: Yes
Elite #/Operator: #12/Brent Banks