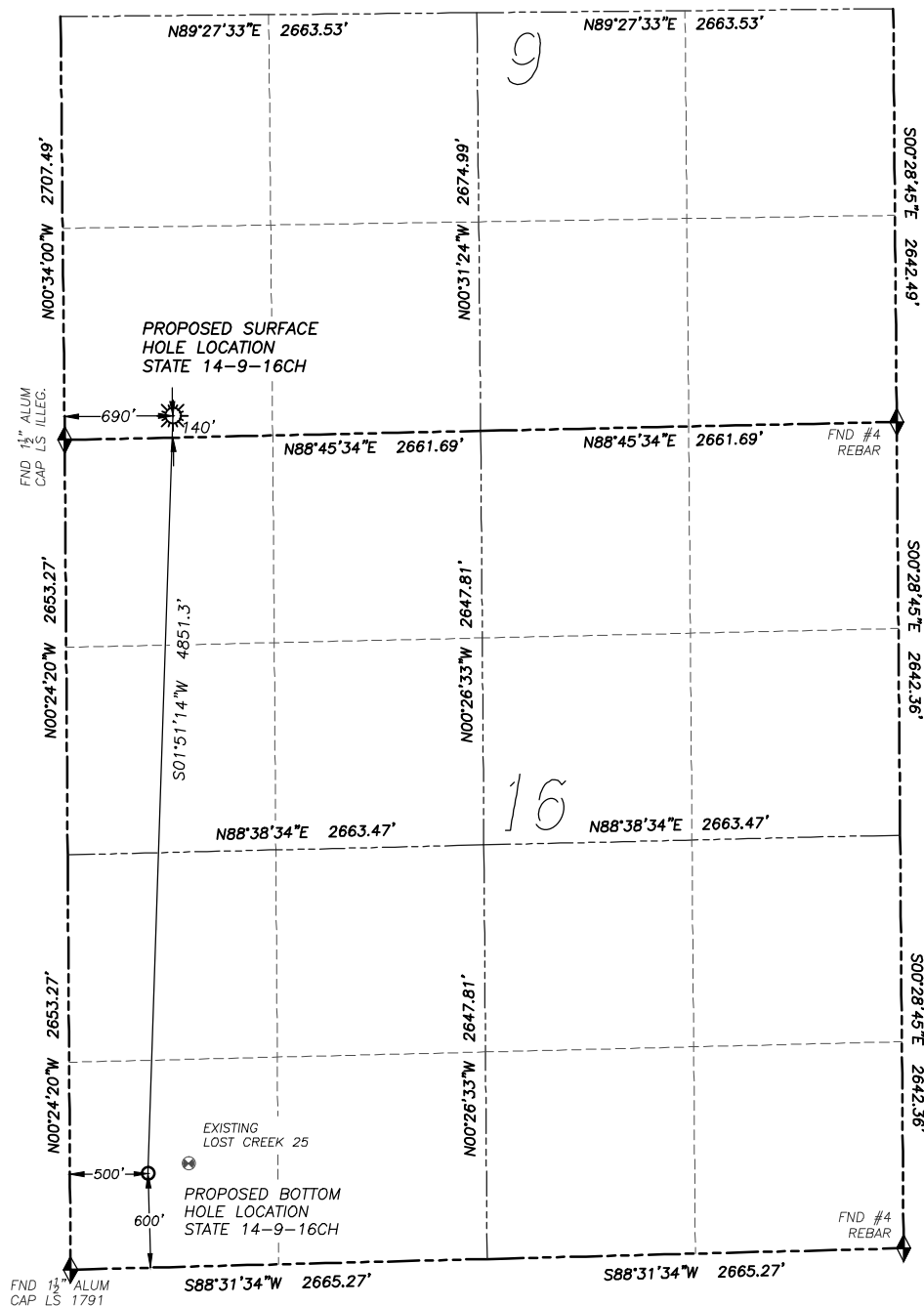


WELL LOCATION CERTIFICATE

STATE 14-9-16CH

SECTION 9, TOWNSHIP 3 NORTH, RANGE 62 WEST OF THE 6TH PRINCIPAL MERIDIAN

**NAD 83 LATITUDE AND LONGITUDE**

STATE 14-9-16CH SURFACE HOLE:

LATITUDE: N40.23332°

LONGITUDE: W104.33577°

ELEVATION: 4631'

FOOTAGE: 140' FSL, 690' FWL

PDOP: 1.2

QTR/QTR: SW4/SW4

PROP LINE: 140' SOUTH

GPS OPERATOR: R. DALEY

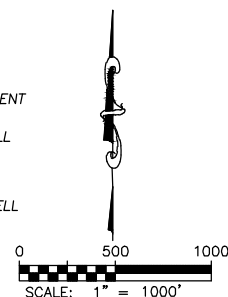
BOTTOM HOLE:

LATITUDE: N40.22001°

LONGITUDE: W104.33633°

FOOTAGE: 600' FSL, 500' FWL
OF SECTION 16**LEGEND**

- ◆ FOUND MONUMENT AS DESCRIBED
- ☀ PROPOSED WELL
- EXISTING WELL
- BOTTOM HOLE
- ⊙ ABANDONED WELL

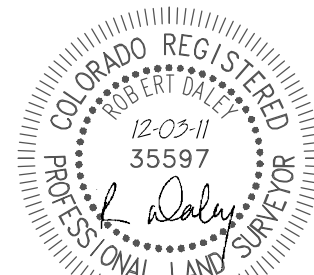
**NOTES:**

- 1) BEARINGS FOR THIS MAP ARE ASSUMED AND BASED UPON GPS OBSERVATIONS MADE BETWEEN MONUMENTS LOCATED AT THE SOUTHEAST CORNER AND SOUTHWEST CORNER OF SECTION 9, T.3N., R.62W.
- 2) HORIZONTAL DATUM IS NAD83.
- 3) VERTICAL DATUM IS NAVD88 AND ORIGINATES FROM THE LOCAL C.O.R.S. NETWORK, UTILIZING THE GEOID09 MODEL.
- 4) SEE LOCATION DRAWING FOR VISIBLE IMPROVEMENTS WITHIN 400' OF PROPOSED DISTURBED AREA.
- 5) SURFACE USE: PASTURE.

NOTICE: According to Colorado law you MUST commence any legal action based upon any defect in this W.L.C. within three years after you first discover such defect. In no event may any action based upon any such defect in this W.L.C. be commenced more than ten years from the date of the certification shown hereon.

IN ACCORDANCE WITH A REQUEST FROM HILCORP ENERGY COMPANY, DALEY LAND SURVEYING, INC. HAS DETERMINED THE SURFACE LOCATION OF THE STATE 14-9-16CH WELL TO BE 140' FSL, 690' FWL, AS MEASURED AT NINETY (90) DEGREES FROM THE SECTION LINES OF SECTION 9, TOWNSHIP 3 NORTH, RANGE 62 WEST OF THE 6TH PRINCIPAL MERIDIAN, WELD COUNTY, COLORADO. THE BOTTOM HOLE LOCATION, PROVIDED BY THE CLIENT, IS TO BE 600' FSL, 500' FWL OF SECTION 16.

I HEREBY CERTIFY THAT THIS WELL LOCATION CERTIFICATE WAS PREPARED BY ME OR UNDER MY DIRECT SUPERVISION, THAT THE WORK WAS COMPLETED ON 11/30/2011 FOR AND ON BEHALF OF HILCORP ENERGY COMPANY, AND THAT THIS MAP DOES NOT REPRESENT A BOUNDARY SURVEY, IT IS NOT A LAND SURVEY PLAT OR AN IMPROVEMENT SURVEY PLAT AND IT IS NOT TO BE RELIED UPON FOR THE ESTABLISHMENT OF FENCE, BUILDING OR OTHER FUTURE IMPROVEMENT LINES.



FOR AND ON BEHALF OF
DALEY LAND SURVEYING INC.,
Robert Daley, PLS 35597