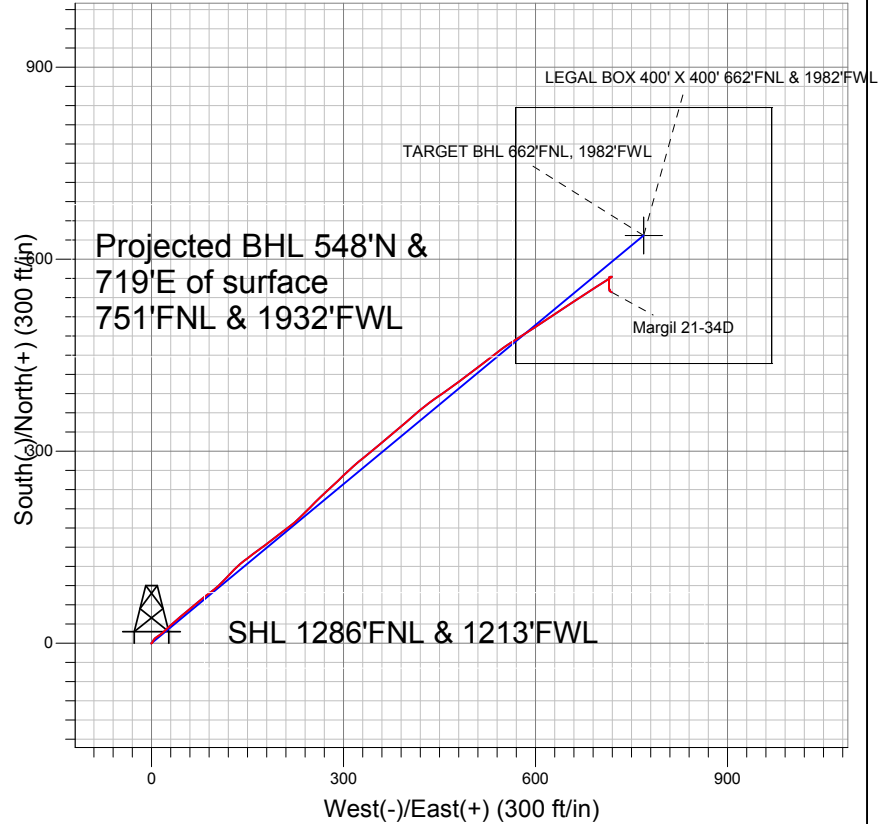


Synergy Resources



LEGEND

- Margil 21-34D, Wellbore #1, Plan #1 (5-23-11) V0
- Wellbore #1
- Survey #1

Final Survey Plot

Projected Final Survey -
 8151'MD & 8049'TVD @ 904'VS
 0.5 deg Inc 146.8 deg AZ

Project: SEC.34-T4N-R68W
 Site: Margil 11-34D Pad Sec.34-T4N-R68W
 Well: Margil 21-34D
 Plan: Wellbore #1



Directional

Synergy Resources

SEC.34-T4N-R68W

Margil 11-34D Pad Sec.34-T4N-R68W

Margil 21-34D

Wellbore #1

Survey: Survey #1

Standard Survey Report

31 August, 2011

Survey										
Measured Depth (ft)	Inclination (°)	Azimuth (°)	Vertical Depth (ft)	+N/-S (ft)	+E/-W (ft)	Vertical Section (ft)	Dogleg Rate (°/100ft)	Build Rate (°/100ft)	Turn Rate (°/100ft)	
0.0	0.00	0.00	0.0	0.0	0.0	0.0	0.00	0.00	0.00	
155.0	0.40	220.60	155.0	-0.4	-0.4	-0.5	0.26	0.26	0.00	
246.0	0.20	57.10	246.0	-0.6	-0.4	-0.7	0.65	-0.22	-179.67	
338.0	0.30	60.80	338.0	-0.4	-0.1	-0.3	0.11	0.11	4.02	
428.0	0.80	40.30	428.0	0.2	0.5	0.6	0.59	0.56	-22.78	
520.0	1.10	30.60	520.0	1.5	1.4	2.0	0.37	0.33	-10.54	
612.0	1.10	30.10	612.0	3.0	2.3	3.7	0.01	0.00	-0.54	
739.0	0.80	26.40	738.9	4.9	3.3	5.6	0.24	-0.24	-2.91	
833.0	1.70	47.50	832.9	6.4	4.6	7.6	1.06	0.96	22.45	
927.0	1.50	42.20	926.9	8.2	6.5	10.2	0.26	-0.21	-5.64	
1,020.0	3.00	60.00	1,019.8	10.4	9.4	13.8	1.76	1.61	19.14	
1,114.0	5.50	54.00	1,113.5	14.2	15.2	20.8	2.70	2.66	-6.38	
1,208.0	7.00	44.70	1,207.0	21.0	22.8	31.0	1.92	1.60	-9.89	

Company:	Synergy Resources	Local Co-ordinate Reference:	Well Margil 21-34D
Project:	SEC.34-T4N-R68W	TVD Reference:	WELL @ 5117.0ft (Original Well Elev)
Site:	Margil 11-34D Pad Sec.34-T4N-R68W	MD Reference:	WELL @ 5117.0ft (Original Well Elev)
Well:	Margil 21-34D	North Reference:	True
Wellbore:	Wellbore #1	Survey Calculation Method:	Minimum Curvature
Design:	Wellbore #1	Database:	Landmark

Survey										
Measured Depth (ft)	Inclination (°)	Azimuth (°)	Vertical Depth (ft)	+N/-S (ft)	+E/-W (ft)	Vertical Section (ft)	Dogleg Rate (°/100ft)	Build Rate (°/100ft)	Turn Rate (°/100ft)	
1,301.0	7.90	47.50	1,299.2	29.3	31.5	43.0	1.04	0.97	3.01	
1,395.0	10.00	50.80	1,392.1	38.8	42.6	57.6	2.30	2.23	3.51	
1,489.0	11.00	49.40	1,484.5	49.8	55.8	74.7	1.10	1.06	-1.49	
1,583.0	13.50	50.10	1,576.3	62.7	71.0	94.7	2.66	2.66	0.74	
1,676.0	14.70	53.60	1,666.5	76.7	88.8	117.3	1.58	1.29	3.76	
1,770.0	14.70	46.60	1,757.5	91.9	107.1	141.1	1.89	0.00	-7.45	
1,864.0	14.00	41.90	1,848.5	108.6	123.3	164.3	1.45	-0.74	-5.00	
1,958.0	14.50	50.30	1,939.6	124.6	140.0	187.3	2.26	0.53	8.94	
2,052.0	14.60	54.50	2,030.6	139.0	158.7	210.9	1.13	0.11	4.47	
2,146.0	15.10	52.40	2,121.5	153.3	178.0	234.9	0.78	0.53	-2.23	
2,239.0	14.00	51.90	2,211.5	167.7	196.5	258.3	1.19	-1.18	-0.54	
2,333.0	13.90	53.30	2,302.7	181.4	214.5	280.9	0.37	-0.11	1.49	
2,427.0	13.70	46.80	2,394.0	195.8	231.7	303.3	1.66	-0.21	-6.91	
2,521.0	14.20	44.00	2,485.3	211.7	247.8	325.9	0.89	0.53	-2.98	
2,614.0	15.40	45.90	2,575.2	228.5	264.6	349.5	1.39	1.29	2.04	
2,708.0	15.00	47.70	2,665.9	245.4	282.5	374.1	0.66	-0.43	1.91	
2,802.0	13.40	45.50	2,757.0	261.2	299.3	397.1	1.80	-1.70	-2.34	
2,895.0	13.40	48.40	2,847.5	275.9	315.0	418.6	0.72	0.00	3.12	
2,989.0	14.00	51.90	2,938.8	290.2	332.1	440.9	1.09	0.64	3.72	
3,083.0	15.30	48.70	3,029.8	305.4	350.4	464.6	1.63	1.38	-3.40	
3,176.0	15.30	52.00	3,119.5	321.0	369.3	489.2	0.94	0.00	3.55	
3,270.0	14.00	48.40	3,210.4	336.2	387.6	512.9	1.69	-1.38	-3.83	
3,364.0	12.60	48.70	3,301.9	350.5	403.8	534.5	1.49	-1.49	0.32	
3,458.0	12.00	51.00	3,393.7	363.4	419.1	554.6	0.82	-0.64	2.45	
3,552.0	12.10	52.20	3,485.6	375.6	434.5	574.2	0.29	0.11	1.28	
3,645.0	12.80	56.30	3,576.5	387.3	450.7	594.2	1.21	0.75	4.41	
3,739.0	12.80	53.60	3,668.1	399.3	467.8	614.9	0.64	0.00	-2.87	
3,833.0	13.50	53.80	3,759.7	411.9	485.0	636.3	0.75	0.74	0.21	
3,926.0	14.50	52.20	3,849.9	425.5	503.0	658.8	1.15	1.08	-1.72	
4,020.0	14.70	52.20	3,940.9	440.0	521.7	682.4	0.21	0.21	0.00	
4,114.0	14.00	53.10	4,031.9	454.1	540.2	705.7	0.78	-0.74	0.96	
4,207.0	12.00	55.00	4,122.5	466.4	557.1	726.6	2.20	-2.15	2.04	
4,301.0	11.10	58.00	4,214.6	476.8	572.8	745.3	1.15	-0.96	3.19	
4,395.0	11.30	57.00	4,306.8	486.6	588.2	763.4	0.30	0.21	-1.06	
4,488.0	12.10	57.50	4,397.9	496.8	604.1	782.1	0.87	0.86	0.54	
4,582.0	12.30	56.60	4,489.8	507.6	620.7	801.9	0.29	0.21	-0.96	
4,676.0	11.70	56.60	4,581.7	518.4	637.0	821.3	0.64	-0.64	0.00	
4,770.0	10.60	57.30	4,674.0	528.3	652.3	839.4	1.18	-1.17	0.74	
4,864.0	9.90	56.60	4,766.5	537.4	666.3	856.0	0.76	-0.74	-0.74	
4,958.0	9.30	55.70	4,859.1	546.2	679.3	871.6	0.66	-0.64	-0.96	
5,052.0	7.70	55.60	4,952.1	554.0	690.8	885.4	1.70	-1.70	-0.11	
5,146.0	5.60	58.20	5,045.5	560.0	699.9	896.2	2.26	-2.23	2.77	
5,239.0	4.20	59.80	5,138.1	564.1	706.7	904.1	1.51	-1.51	1.72	
5,333.0	3.10	56.60	5,231.9	567.2	711.8	910.0	1.19	-1.17	-3.40	
5,427.0	2.40	57.50	5,325.8	569.7	715.6	914.5	0.75	-0.74	0.96	
5,520.0	1.40	56.80	5,418.8	571.3	718.2	917.5	1.08	-1.08	-0.75	
5,602.5	0.61	60.47	5,501.3	572.1	719.4	919.0	0.96	-0.96	4.45	
TARGET BHL 662'FNL, 1982'FWL										
5,614.0	0.50	61.90	5,512.8	572.2	719.5	919.1	0.96	-0.95	12.44	
5,708.0	1.00	271.40	5,606.8	572.4	719.0	918.9	1.55	0.53	-160.11	
5,802.0	1.10	268.10	5,700.7	572.4	717.3	917.5	0.12	0.11	-3.51	
5,896.0	0.80	240.30	5,794.7	572.0	715.8	916.2	0.58	-0.32	-29.57	
5,990.0	0.50	195.00	5,888.7	571.3	715.2	915.2	0.61	-0.32	-48.19	
6,084.0	0.50	176.90	5,982.7	570.5	715.1	914.6	0.17	0.00	-19.26	

Company:	Synergy Resources	Local Co-ordinate Reference:	Well Margil 21-34D
Project:	SEC.34-T4N-R68W	TVD Reference:	WELL @ 5117.0ft (Original Well Elev)
Site:	Margil 11-34D Pad Sec.34-T4N-R68W	MD Reference:	WELL @ 5117.0ft (Original Well Elev)
Well:	Margil 21-34D	North Reference:	True
Wellbore:	Wellbore #1	Survey Calculation Method:	Minimum Curvature
Design:	Wellbore #1	Database:	Landmark

Survey

Measured Depth (ft)	Inclination (°)	Azimuth (°)	Vertical Depth (ft)	+N/-S (ft)	+E/-W (ft)	Vertical Section (ft)	Dogleg Rate (°/100ft)	Build Rate (°/100ft)	Turn Rate (°/100ft)
6,178.0	0.80	192.80	6,076.7	569.4	714.9	913.8	0.37	0.32	16.91
6,272.0	0.80	185.60	6,170.7	568.1	714.7	912.9	0.11	0.00	-7.66
6,458.0	0.90	174.00	6,356.7	565.4	714.8	911.1	0.11	0.05	-6.24
6,646.0	1.20	180.70	6,544.7	562.0	714.9	909.0	0.17	0.16	3.56
6,799.2	1.77	181.75	6,697.8	558.0	714.8	906.4	0.37	0.37	0.68
LEGAL BOX 400' X 400' 662'FNL & 1982'FWL									
6,834.0	1.90	181.90	6,732.6	556.9	714.8	905.7	0.37	0.37	0.43
7,021.0	1.20	143.10	6,919.5	552.2	715.8	903.5	0.65	-0.37	-20.75
7,209.0	0.30	283.70	7,107.5	550.8	716.5	903.2	0.77	-0.48	74.79
7,396.0	0.40	280.00	7,294.5	551.0	715.4	902.4	0.05	0.05	-1.98
7,582.0	0.40	126.90	7,480.5	550.7	715.3	902.2	0.42	0.00	-82.31
7,769.0	0.50	126.60	7,667.5	549.8	716.5	902.5	0.05	0.05	-0.16
7,956.0	0.60	109.00	7,854.5	549.0	718.1	903.2	0.10	0.05	-9.41
8,107.0	0.50	146.80	8,005.5	548.2	719.2	903.6	0.24	-0.07	25.03
8,151.0	0.50	146.80	8,049.5	547.9	719.4	903.5	0.00	0.00	0.00

Checked By: _____ Approved By: _____ Date: _____