

HALLIBURTON

WILLIAMS PRODUCTION RMT INC - EBUS

**GM 324-23
GRAND VALLEY
Garfield County , Colorado**

Cement Surface Casing
05-May-2011

Post Job Report

The Road to Excellence Starts with Safety

Sold To #: 300721	Ship To #: 2850917	Quote #:	Sales Order #: 8134829
Customer: WILLIAMS PRODUCTION RMT INC - EBUS	Customer Rep: Wilson, W.C.		
Well Name: GM	Well #: 324-23	API/UWI #: 05-045-20231	
Field: GRAND VALLEY	City (SAP): PARACHUTE	County/Parish: Garfield	State: Colorado
Legal Description:			
Lat: N 39.5 deg. OR N 39 deg. 29 min. 59.363 secs.		Long: W 108.079 deg. OR W -109 deg. 55 min. 16.842 secs.	
Contractor: H&P 280	Rig/Platform Name/Num: H&P 280		
Job Purpose: Cement Surface Casing	Ticket Amount:		
Well Type: Development Well	Job Type: Cement Surface Casing		
Sales Person: KOHL, KYLE	Svc Supervisor: CHASTAIN, DERICK	MBU ID Emp #: 455848	

Activity Description	Date/Time	Cht #	Rate bbl/min	Volume bbl		Pressure psig		Comments
				Stage	Total	Tubing	Casing	
Call Out	05/05/2011 04:00							
Pre-Convoy Safety Meeting	05/05/2011 06:50							WITH ALL HES PERSONNEL
Arrive at Location from Service Center	05/05/2011 09:00							RIG STILL RUNNING CASING
Assessment Of Location Safety Meeting	05/05/2011 09:10							WITH ALL HES PERSONNEL
Other	05/05/2011 10:00							SPOT EQUIPMENT
Pre-Rig Up Safety Meeting	05/05/2011 10:10							WITH ALL HES PERSONNEL
Rig-Up Equipment	05/05/2011 10:20							1 HT 400 PUMP, 1 660 BULK TRUCK, 1 F-450 PICK-UP, 1 PLUG CONTAINER
Pre-Job Safety Meeting	05/05/2011 13:15							WITH ALL HES PERSONNEL, RIG CREW AND CO REP
Start Job	05/05/2011 13:24							TD 1320', TP 1306.3', FC 1261.8', SJ 44.5', CASING 9.625" 32.3# H-40, 13.5" HOLE, 9.7# MUD
Pump Water	05/05/2011 13:25		2	2			43.0	FRESH H2O
Test Lines	05/05/2011 13:27						2500.0	HELD PRESSURE 2 MIN NO LEAKS
Pump Spacer 1	05/05/2011 13:30		2	20			45.0	FRESH H2O
Shutdown	05/05/2011 13:42							SHUT DOWN AND SWAPPED IRON TO THE PIT

Cementing Job Log

Activity Description	Date/Time	Cht #	Rate bbl/min	Volume bbl		Pressure psig		Comments
				Stage	Total	Tubing	Casing	
Other	05/05/2011 13:46		4	3				PUMPED APROX 3 BBL CEMENT TO PIT, TO MAKE ROOM IN THE MIXING TUB
Pump Lead Cement	05/05/2011 13:52		6	68.2			305.0	168 SKS 12.3 PPG 2.38 FT3/SK 13.75 GAL/SK
Pump Tail Cement	05/05/2011 14:05		8	60.1			320.0	160 SKS 12.8 PPG 2.11 FT3/SK 11.75 GAL/SK
Shutdown	05/05/2011 14:12							
Drop Top Plug	05/05/2011 14:16							PLUG LAUNCHED
Pump Displacement	05/05/2011 14:16		10	99.3			520.0	FRESH WATER
Slow Rate	05/05/2011 14:27		2	89.3			280.0	SLOW RATE 10 BBLs PRIOR TO CALCULATED DISPLACEMENT
Bump Plug	05/05/2011 14:31		2	99.3			780.0	PLUG BUMPED HOLD 2 MINS
Check Floats	05/05/2011 14:33							FLOATS HOLDING
End Job	05/05/2011 14:34							GOOD RETURNS THROUGHOUT JOB, 26 BBL CEMENT TO SURFACE, BB AND SWEDGE USED AND LEFT ON LOCATION, NO SUGAR ADD HOURS OR DEREK CHARGE.
Pre-Rig Down Safety Meeting	05/05/2011 14:40							WITH ALL HES PERSONNEL
Rig-Down Equipment	05/05/2011 14:50							
Pre-Convoy Safety Meeting	05/05/2011 15:50							WITH ALL HES PERSONNEL
Crew Leave Location	05/05/2011 16:00							
Comment	05/05/2011 16:10							THANK YOU FOR USING HALLIBURTON CEMENT DEPARTMENT. DERICK CHASTAIN AND CREW



Cementing Job Summary

The Road to Excellence Starts with Safety

Sold To #: 300721	Ship To #: 2850917	Quote #:	Sales Order #: 8134829
Customer: WILLIAMS PRODUCTION RMT INC - EBUS		Customer Rep: Wilson, W.C.	
Well Name: GM	Well #: 324-23	API/UWI #: 05-045-20231	
Field: GRAND VALLEY	City (SAP): PARACHUTE	County/Parish: Garfield	State: Colorado
Lat: N 39.5 deg. OR N 39 deg. 29 min. 59.363 secs.		Long: W 108.079 deg. OR W -109 deg. 55 min. 16.842 secs.	
Contractor: H&P 280	Rig/Platform Name/Num: H&P 280		
Job Purpose: Cement Surface Casing			
Well Type: Development Well		Job Type: Cement Surface Casing	
Sales Person: KOHL, KYLE		Srvs Supervisor: CHASTAIN, DERICK	MBU ID Emp #: 455848

Job Personnel

HES Emp Name	Exp Hrs	Emp #	HES Emp Name	Exp Hrs	Emp #	HES Emp Name	Exp Hrs	Emp #
BROWN, TRAVIS A		396848	CHASTAIN, DERICK Allan		455848	JENKINS, DEMON Lashaun		457892
MUHLESTEIN, RYAN Herrick		453609						

Equipment

HES Unit #	<i>Distance-1 way</i>	HES Unit #	<i>Distance-1 way</i>	HES Unit #	<i>Distance-1 way</i>	HES Unit #	<i>Distance-1 way</i>
10551730C	60 mile	10867304	60 mile	10951250	60 mile	10973571	60 mile
10998054	60 mile						

Job Hours

Date	On Location Hours	Operating Hours	Date	On Location Hours	Operating Hours	Date	On Location Hours	Operating Hours
5-5-11	7	4						

TOTAL	Total is the sum of each column separately	
-------	--	--

Job

Job Times

Formation Name						Date	Time	Time Zone
Formation Depth (MD)	Top	Bottom				Called Out	05 - May - 2011	04:00
Form Type	BHST				On Location	05 - May - 2011	09:00	MST
Job depth MD	1306. ft		Job Depth TVD	1306. ft		Job Started	05 - May - 2011	13:24
Water Depth			Wk Ht Above Floor	4. ft		Job Completed	05 - May - 2011	14:31
Perforation Depth (MD)	From	To				Departed Loc	05 - May - 2011	16:00

Well Data

Description	New / Used	Max pressure psig	Size in	ID in	Weight lbm/ft	Thread	Grade	Top MD ft	Bottom MD ft	Top TVD ft	Bottom TVD ft
OPEN HOLE				13.5				.	1320.	.	1320.
SURFACE CASING	Unknown		9.625	9.001	32.3		H-40	.	1306.3	.	1306.3

Sales/Rental/3rd Party (HES)

Description	Qty	Qty uom	Depth	Supplier
PLUG,CMTG, TOP,9 5/8,HWE,8.16 MIN/9.06 MA	1	EA		

Tools and Accessories

Type	Size	Qty	Make	Depth	Type	Size	Qty	Make	Depth	Type	Size	Qty	Make
Guide Shoe					Packer					Top Plug	9 5/8	1	HES
Float Shoe					Bridge Plug					Bottom Plug			
Float Collar					Retainer					SSR plug set			
Insert Float										Plug Container	9 5/8	1	HES
Stage Tool										Centralizers			

Miscellaneous Materials

Gelling Agt	Conc	Surfactant	Conc	Acid Type	Qty	Conc	%
Treatment Fld	Conc	Inhibitor	Conc	Sand Type	Size	Qty	

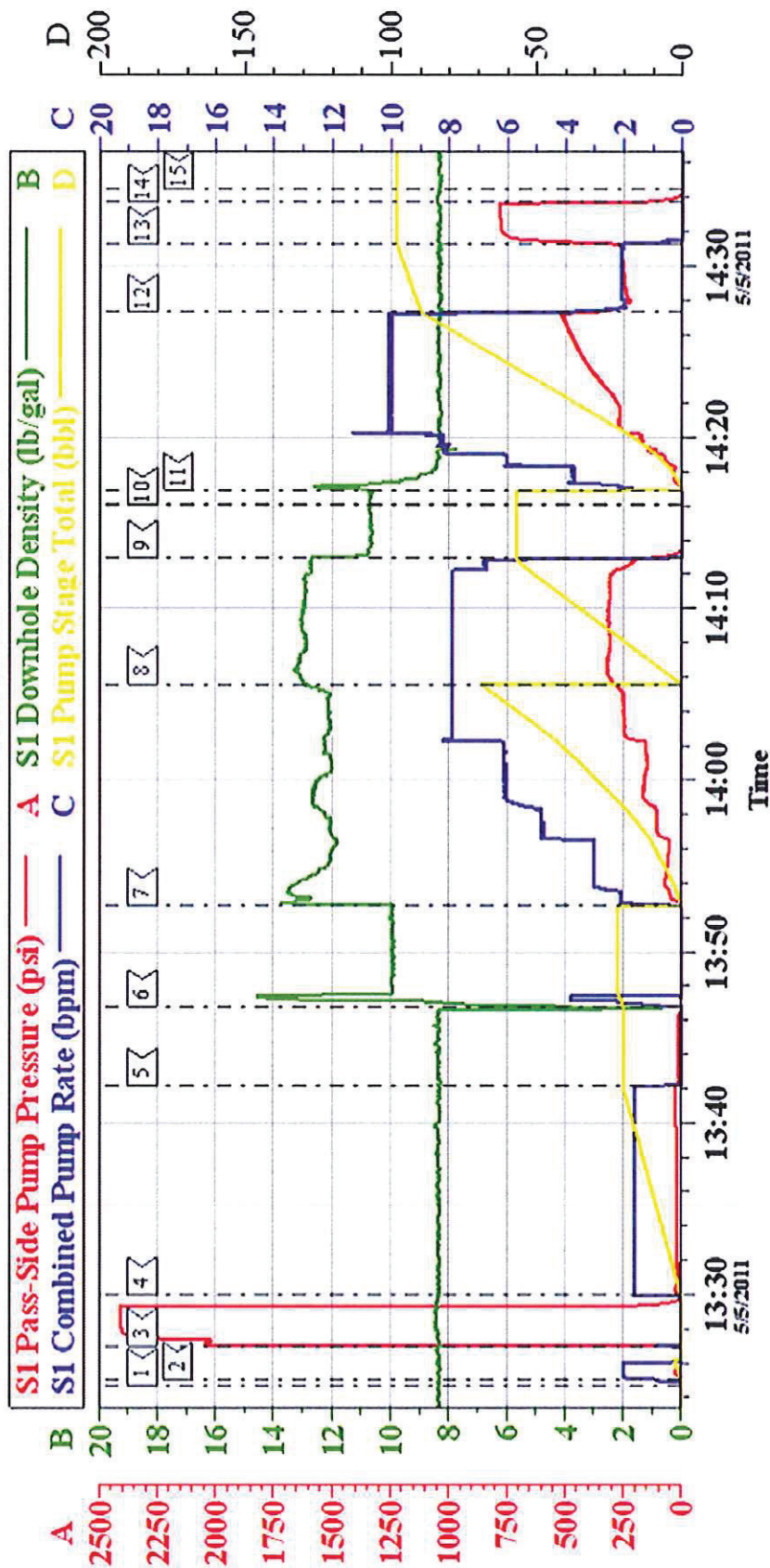
Fluid Data									
Stage/Plug #: 1									
Fluid #	Stage Type	Fluid Name	Qty	Qty uom	Mixing Density lbm/gal	Yield ft ³ /sk	Mix Fluid Gal/sk	Rate bbl/min	Total Mix Fluid Gal/sk
1	WATER SPACER		20.00	bbl	8.33	.0	.0	4.0	
2	Lead Cement	VERSACEM (TM) SYSTEM (452010)	168.0	sacks	12.3	2.38	13.75	8.0	13.75
3	Tail Cement	VERSACEM (TM) SYSTEM (452010)	160.0	sacks	12.8	2.11	11.75	8.0	11.75
4	Displacement Fluid		99.00	bbl	8.34	.0	.0	10.0	
Calculated Values		Pressures		Volumes					
Displacement	99.3	Shut In: Instant		Lost Returns	0	Cement Slurry	131.3	Pad	
Top Of Cement	SURFACE	5 Min		Cement Returns	26	Actual Displacement	99.3	Treatment	
Frac Gradient		15 Min		Spacers	20	Load and Breakdown		Total Job	234
Rates									
Circulating	RIG	Mixing	7	Displacement	10	Avg. Job	8		
Cement Left In Pipe	Amount	44.5 ft	Reason	Shoe Joint					
Frac Ring # 1 @	ID	Frac ring # 2 @	ID	Frac Ring # 3 @	ID	Frac Ring # 4 @	ID		
The Information Stated Herein Is Correct				Customer Representative Signature					

JOB PROCEDURE

H&P 278

Pre-Planned Job Procedure Surface						
EVENT #	EVENT	VOLUME	SACKS	WEIGHT	YIELD	GAL/ SK
1	START JOB					
	FILL LINES	2				
6	TEST LINES	2500 PSI				
9	H2O SPACER	20				
14	LEAD CEMENT	71.2	168	12.3	2.38	13.75
15	TAIL CEMENT	60.1	160	12.8	2.11	11.75
	SHUTDOWN			MUD WT.	9.7	
22	DROP PLUG			CASING	9.625	32.3
23	DISPLACE WITH H2O	99.3		OPEN HOLE	13.5	
	SLOW RATE	89				
26	BUMP PLUG	276	+500	DISP FLUID	8.4	
	CHECK FLOATS					
2	END JOB					
			Do Not Overdisplace			
DISPLACEMENT	TOTAL PIPE	SHOE JOINT LENGTH		ANN FACTOR	BBL/FT	H2O REQ.
99.30	1306.3	44.50		0.0870	0.0787	249
PSI TO LIFT	494	*****Use Mud Scales on Each Tier*****				
PSI TO LAND	276					
CEMENT TO SURFACE		14.2		TOTAL FLUID PUMPED		233
Collapse	1400	Burst	2270		SO#	8134829
HOT	651	TOT	656	CO REP	W.C. WILCISON	

WILLIAMS GM324-23 9 5/8" SURFACE CASING



Local Event Log

1	START JOB	13:24:39	2	FILL LINES	13:25:01	3	PRESSURE TEST	13:27:00
4	PUMP SPACER	13:30:00	5	SHUT DOWN	13:42:08	6	PUMP TO PIT	13:46:45
7	PUMP LEAD CEMENT	13:52:40	8	PUMP TAIL CEMENT	14:05:34	9	SHUT DOWN	14:12:57
10	DROP PLUG	14:16:01	11	PUMP DISPLACEMENT	14:16:54	12	SLOW RATE	14:27:17
13	BUMP PLUG	14:31:15	14	CHECK FLOATS	14:33:44	15	END JOB	14:34:28

Customer: WILLIAMS	Job Date: 05-May-2011	Sales Order #: 8134829
Well Description: GM 324-23	Job type: SURFACE	ADC Used: YES
Customer Rep: W. C. WILSON	Service Supervisor: DERICK CHASTAIN	Operator/Pump: TRAVIS BROWN/ELITE 7

OptiCem v6.4.6
05-May-11 14:51