

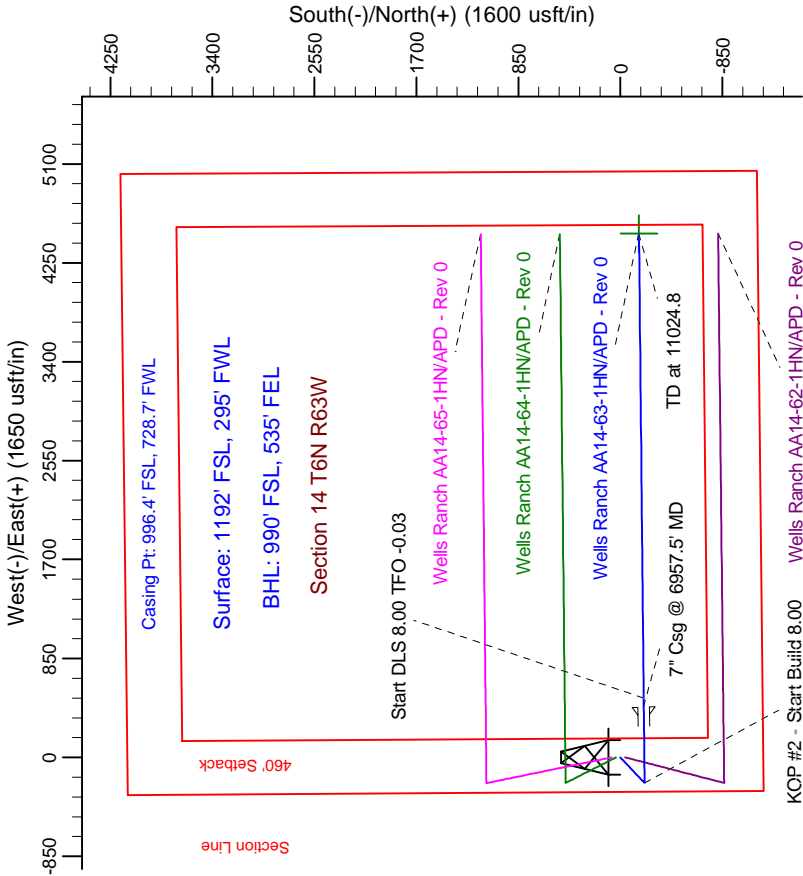
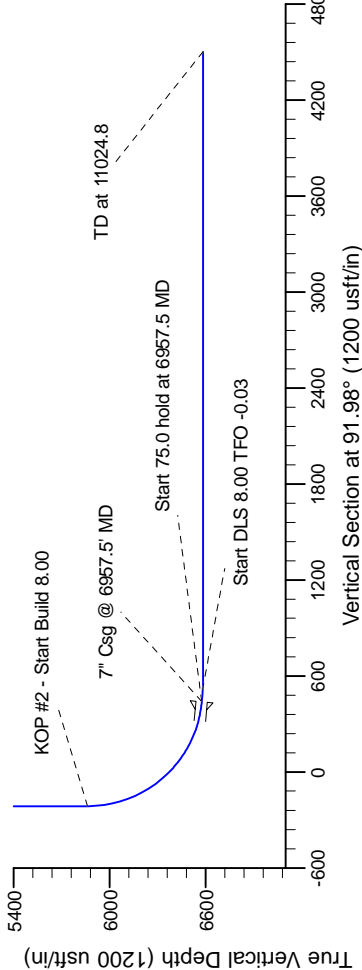
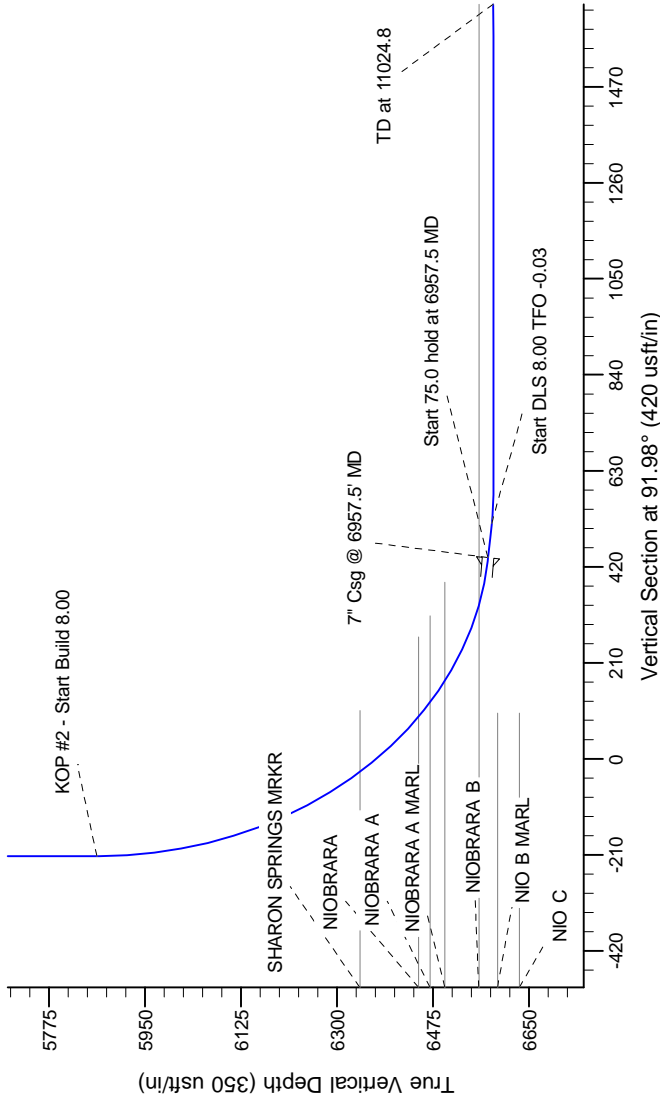
Project: Wattenberg Field
Site: AA (Sec.14-T06N-R63W) Weld County, CO
Well: Wells Ranch AA14-63-1HN
Wellbore: Original Drilling
Design: APD - Rev 0

Northern Region Drilling

Geodetic System: US State Plane 1983
Datum: North American Datum 1983
Ellipsoid: GRS 1980
Zone: Colorado Northern Zone
System Datum: Mean Sea Level

SECTION DETAILS

Sec	MD	Inc	Azi	TVD	+N/-S	+E/-W	Dleg	TFace	VSect	Target
1	0.0	0.00	0.00	0.0	0.0	0.0	0.00	0.00	0.0	
2	2500.0	0.00	0.00	2500.0	0.0	0.0	0.00	0.00	0.0	
3	3103.4	15.08	227.44	3096.4	-53.4	-58.2	2.50	227.44	-56.3	
4	3644.1	15.08	227.44	3618.6	-148.6	-161.8	0.00	0.00	-156.6	
5	4247.5	0.00	0.00	4215.0	-202.0	-220.0	2.50	180.00	-212.9	
6	5895.0	0.00	0.00	5862.5	-202.0	-220.0	0.00	0.00	-212.9	
7	6957.5	85.00	89.44	6575.9	-195.6	433.7	8.00	89.44	440.2	
8	7032.5	85.00	89.44	6582.5	-194.9	508.5	0.00	0.00	514.9	
9	7095.0	90.00	89.44	6585.2	-194.3	570.9	0.00	-0.03	577.3	
10	11024.8	90.00	89.44	6585.0	-155.7	4500.5	0.00	0.00	4503.2	BHL Tgt 990'FSL, 535'FEL



T

G

M

Azimuths to Grid North
True North: -0.70°
Magnetic North: 7.84°

Magnetic Field
Strength: 53161.8snT
Dip Angle: 67.16°
Date: 2/24/2012
Model: IGRF200510

WELL DETAILS: Wells Ranch AA14-63-1HN		
Northing	Ground Level: 4735.0	Longitude
1420503.21	Easting 3302528.47	Latitude
		40.482590
		-104.412410
Plan: APD - Rev 0 (Wells Ranch AA14-63-1HN/Original Drilling)		
Created By: Carrie Willers		
Date: 12:34, February 27 2012		
OK to submit with 2A as per Noble Drilling		
3/1/2012 08:02		