

Permit as horizontal Niobrara:

TMD = 11024.8' , TVD = 6585' (Lateral Length of 4067.3')

13-3/4" hole with 9-5/8" surface casing: 600' and 300 sks.

8-3/4" hole with 7" intermediate casing: 6957.5' and 487 sks.

6-1/8" hole with 4-1/2" liner hung off at liner hanger (6770' TMD)

Please mark permit as tight hole

325 Loveland, CO 970-776-3321

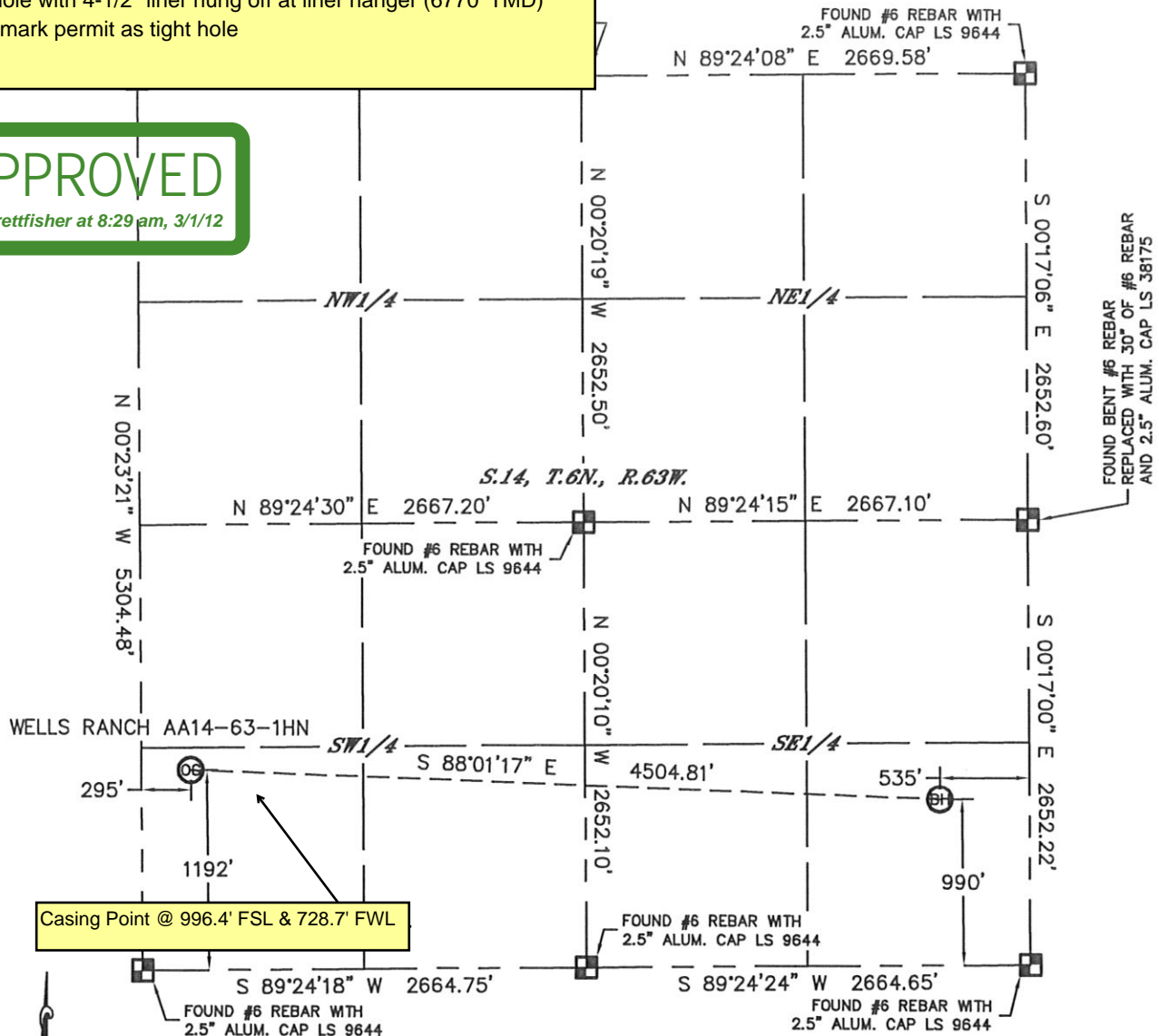
CERTIFICATE

ENT A BOUNDARY SURVEY

SECTION: 14
TOWNSHIP: 6N
RANGE: 63W

APPROVED

By brettfisher at 8:29 am, 3/1/12



In accordance with a request from Sean Casper with Noble Energy Inc.

Lat40', Inc. has determined the surface location of the WELLS RANCH AA14-63-1HN to be 1192' from the SOUTH line and 295' from the WEST line and the bottom hole to be 990' from the SOUTH line and 535' from the EAST line as measured at right angles from the section lines of Section 14, Township 6 North, Range 63 West of the Sixth Principal Meridian, County of Weld, State of Colorado.

I hereby state that this Well Location Certificate was prepared by me, or under my direct supervision, that the fieldwork was completed on 2/8/2012, for and on behalf of Noble Energy Inc. That this is not a Land Survey Plat or an Improvement Survey Plat, and that it is not to be relied upon for establishment of fence, building, or other future improvement lines.

NOTE:

- 1) Bearings shown are Grid Bearings of the Colorado State Plane Coordinate System, North Zone, North American Datum 1983/2007. The lineal dimensions as contained herein are based upon the "U.S. Survey Foot."
- 2) Ground elevations are based on an observed GPS elevation (NAVD 1988 DATUM).
- 3) NEAREST EXISTING WELL: NONE WITHIN SECTION
- 4) IMPROVEMENTS: See LOCATION DRAWING for all visible improvements within 400' of disturbed area.
- 5) SURFACE USE: RANGELAND
- 6) INSTRUMENT OPERATOR: ADAM KELLY

SURFACE LOCATION

LATITUDE: 40.48259°N
LONGITUDE: 104.41241°W
PDOP: 1.9
ELEV: 4735'
1/4, 1/4: SW1/4SW1/4
NEAREST PROPERTY LINE: 295' W

BOTTOM HOLE

LATITUDE: 40.48201°N
LONGITUDE: 104.39624°W

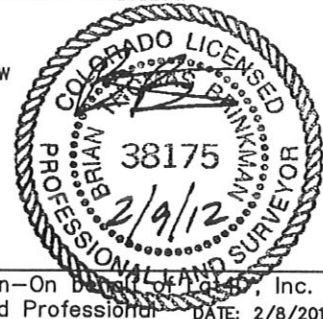
NOTE

According to Colorado law, you must commence any legal action based upon any defect in this W.L.C. within three years after you discover such defect. In no event, may any action based upon any defect in this survey be commenced more than ten years after the date of the certificate shown hereon. (13-80-105 C.R.S.)

LEGEND

- = ALIQUOT MONUMENT AS DESCRIBED
○ = CALCULATED POSITION

Brian T. Brinkman—On behalf of Lat40', Inc.
Colorado Licensed Professional Land Surveyor No. 38175
DATE: 2/8/2012
PROJECT#: 2012020

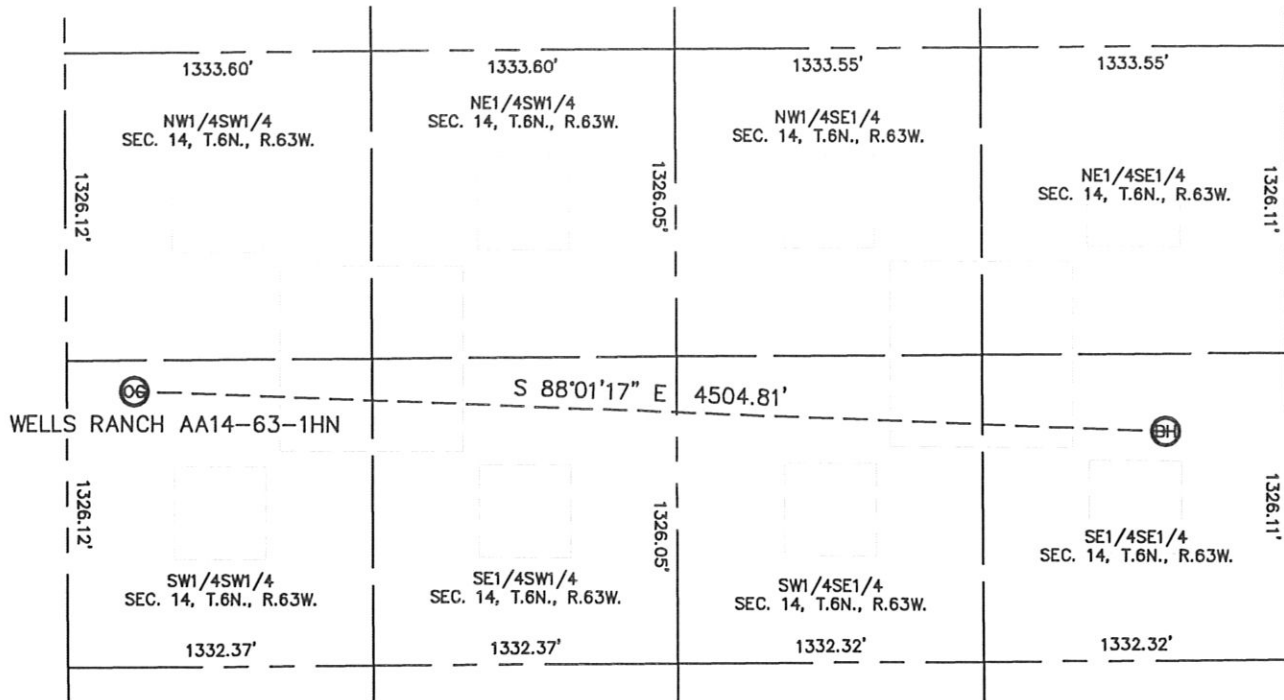


Lat40°, Inc. 1635 Foxtrail Drive, Suite 325 Loveland, CO 970-776-3321

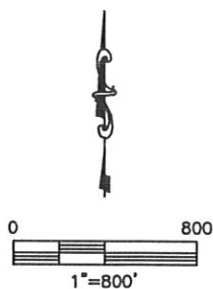
SITE SKETCH

WELLS RANCH AA14-63-1HN

SECTION: 14
TOWNSHIP: 6N
RANGE: 63W



NOTE: NO EXISTING WELLS ALONG PROPOSED WELL BORE



DATE: 2/8/2012
PROJECT#: 2012020