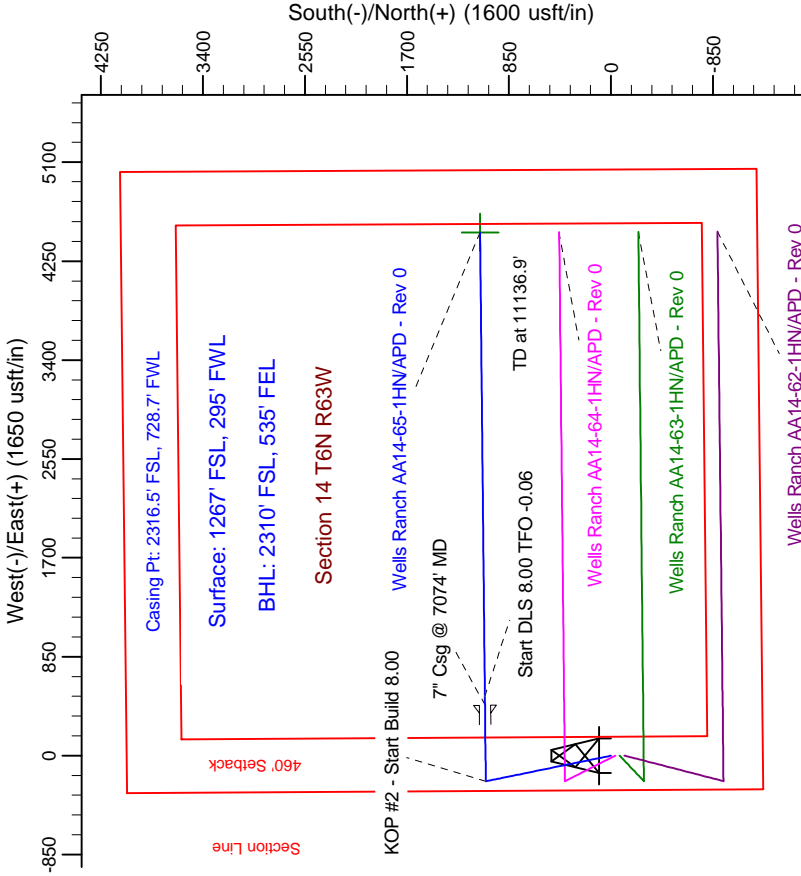
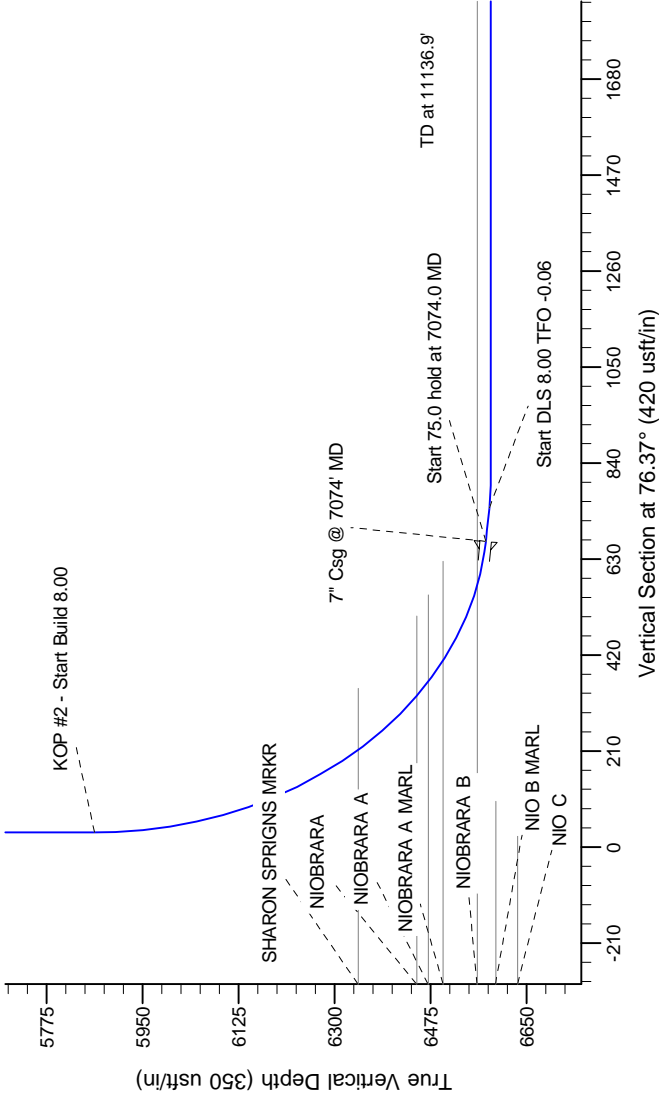


Northern Region Drilling

Project: Wattenberg Field  
Site: AA (Sec.14-T06N-R63W) Weld County, CO  
Well: Wells Ranch AA14-65-1HN  
Wellbore: Original Drilling  
Design: APD - Rev 0

Geodetic System: US State Plane 1983  
Datum: North American Datum 1983  
Ellipsoid: GRS 1980  
Zone: Colorado Northern Zone  
System Datum: Mean Sea Level

SECTION DETAILS											
Sec	MD	Inc	Azi	TVD	+N/-S	+E/-W	Dleg	TFace	VSec	Target	
1	0.0	0.00	0.00	0.0	0.0	0.0	0.0	0.00	0.0		
2	1000.0	0.00	0.00	1000.0	0.0	0.0	0.00	0.00	0.0		
3	1679.2	16.98	348.09	1689.3	97.8	-20.6	2.50	348.09	3.0		
4	4644.9	16.98	348.09	4505.7	945.2	-199.4	0.00	0.00	29.0		
5	5324.1	0.00	0.00	5175.0	1043.0	-220.0	2.50	180.00	32.0		
6	6011.5	0.00	0.00	5862.4	1043.0	-220.0	0.00	0.00	32.0		
7	7074.0	85.00	89.43	6575.9	1049.5	433.7	8.00	89.43	668.9		
8	7149.0	85.00	89.43	6582.4	1050.2	508.5	0.00	0.00	741.6		
9	7211.5	90.00	88.42	6585.1	1050.9	570.9	8.00	-0.06	802.5		
10	11136.9	90.00	88.42	6585.0	1090.3	4496.1	0.00	0.00	4626.4	BHL Tgt 2310'FSL, 535'FEL	



**T G M**

Azimuths to Grid North  
True North: -0.70°  
Magnetic North: 7.84°

Magnetic Field  
Strength: 53161.9snT  
Dip Angle: 67.16°  
Date: 2/24/2012  
Model: IGRF200510

WELL DETAILS: Wells Ranch AA14-65-1HN			
Ground Level: 4736.0	Longitude		
North	East	Latitude	
1420576.07	3302527.58	40.482790	-104.412410

Plan: APD - Rev 0 (Wells Ranch AA14-65-1HN/Original Drilling)			
Created By: Carrie Willers	Date: 14-16, February 27 2012		

**OK to submit with 2A as per Noble Drilling**

**3/1/2012 08:02**