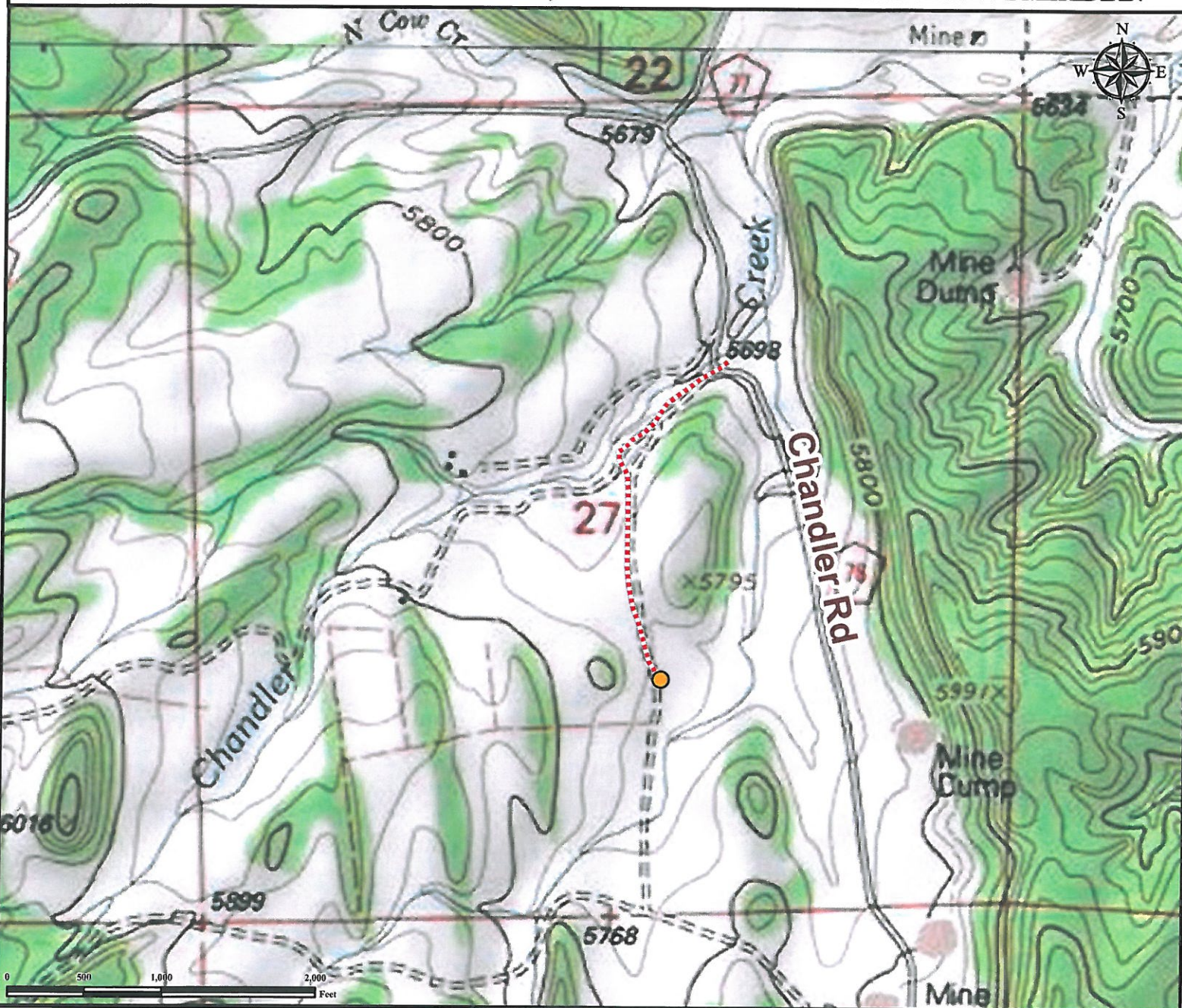


Access Road Map

SLANOVICH #34-27

NW¼ SE¼ SECTION 27, TOWNSHIP 19 SOUTH, RANGE 70 WEST OF THE 6TH PRINCIPAL MERIDIAN



From Florence, CO: From the intersection of US Highway 115 and Highway 67,
Drive West on Highway 115 for ±0.2 mile.
Turn Right on CO-115 N and drive ±5.0 miles.
Turn Left on Ash St. and drive ±0.4 miles.
Continue South on Chandler Rd/Co Rd 77 and drive ±2.8 miles.
Slight Left on County Road 80 and drive for ±0.3 mile.

Turn Right onto proposed access road and drive ±0.3 miles.
Turn Left and proceed south ±0.3 miles to proposed well location.
 Total distance from Florence, CO to proposed well location is ±9.3 miles.

Legend

● Proposed Well Location - - - - - Proposed Access Road

Reference Location

** All Measurements are Made from
 Reference Well SLANOVICH #34-27**

Lat: 38.363705° Long: -105.207263° (NAD83)
 Elevation: 5758 Feet



Use our resources to find yours!
www.petro-fs.com
 (303) 928-7128

Field Date: 02/24/2012
 Drafting Date: 03/07/2012
 Drafter: HMB
 Checked By: BHF

Data Sources:
 - TOPO courtesy of USGS

Prepared for:
**WINN EXPLORATION
 Co., INC.**