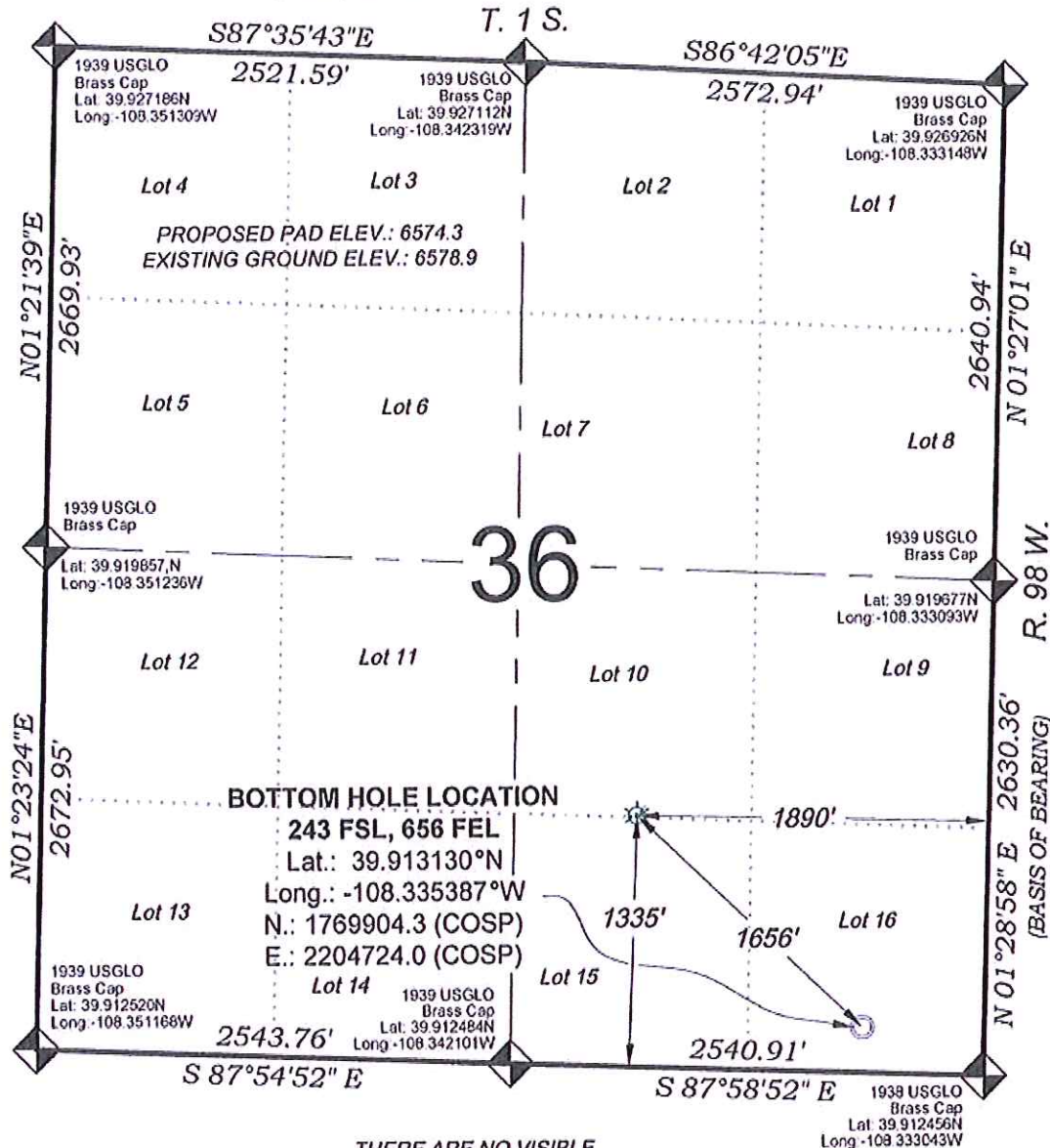


Federal RGU 544-36-198



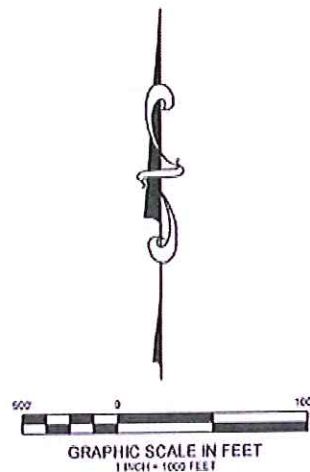
1335 FSL
1890 FEL

LATITUDE
39.916142°N

LONGITUDE
-108.339808°W

NORTHING
1771039.9

EASTING
2203518.7



THERE ARE NO VISIBLE
IMPROVEMENTS WITHIN 400'
OF THIS LOCATION

SURVEYORS STATEMENT

I, MICHAEL J. LANGHORNE, A REGISTERED LAND SURVEYOR IN THE STATE OF COLORADO DO HEREBY CERTIFY THAT THE SURVEY SHOWN HEREON WAS PREPARED UNDER MY DIRECT SUPERVISION AND HAS BEEN STAKED ON THE GROUND AS SHOWN ON THE PLAT AND CHECKING THAT THIS MAP IS A TRUE REPRESENTATION THEREOF.

MICHAEL J. LANGHORNE, COLORADO REGISTRATION NO. 36572
FOR AND ON BEHALF OF
BOOKCLIFF SURVEY SERVICES, INC.

REFERENCES

- 1) DEPENDENT RESURVEY and SUDIVISION OF CERTAIN SECTIONS
T. 1 S., R. 98 W., 6th P.M. (GLO PLAT)
- 2) U.S.G.S. QUAD: Rock School and Square S Ranch, CO

- LEGEND -

FIELD LOCATED SECTION
MONUMENTS AS DESCRIBED

FIELD SURVEYED
WELL LOCATION

CALCULATED BOTTOM
HOLE LOCATION

CALCULATED SECTION
CORNER LOCATION

NOTES

- 1) ELEVATIONS BASED ON N.A.V.D. 1988 PUBLISHED COORDINATES.
- 2) LATITUDES AND LONGITUDES ARE BASE ON NAD 83, PUBLISHED COORDINATES.
- 3) STATE PLANE COORDINATES ARE BASED ON COLORADO CENTRAL ZONE, U.S. SURVEY FEET.
- 4) ELEVATION MASK SET TO 15'
- 5) GPS OPERATOR J. KIRKPATRICK, OBSERVED A PDOP OF 1.8 FOR SURVEY POINT NUMBER 220.
- 6) SURFACE AND BOTTOM HOLE LOCATIONS ARE MEASURED 90° FROM SECTION LINES.

WELL LOCATION PLAT Prepared for:
WPXENERGY. WPX Energy Rocky Mountain, LLC

SW1/4 SE1/4, SECTION 36
T. 1 S., R. 98 W. of the 6th. P.M.
Rio BLANCO COUNTY, COLORADO

136 East Third Street
Rifle, Colorado
81650 Ph. (970)
625-2720 Fax (970)
625-2773

BOOKCLIFF
Survey Services, Inc.

SURVEY DATE: 10/14/11
MAP DATE: 1/11/12
SCALE: 1" = 1000'
PLAT: 1 of 1
PROJECT: Williams Highland