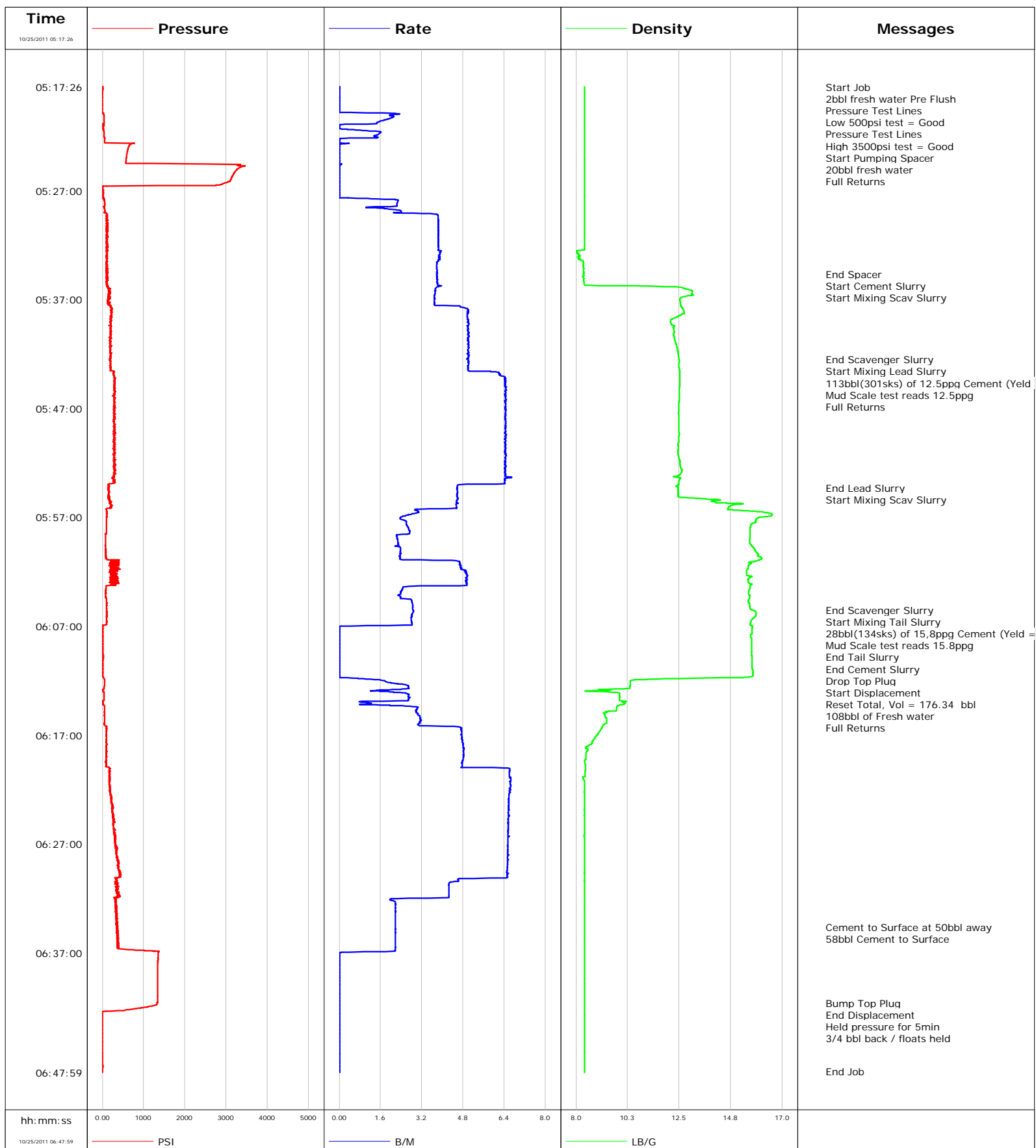


Well BENZEL FEE 25-7E
Field North Parachute
Engineer Dustin Krueger
Country United States

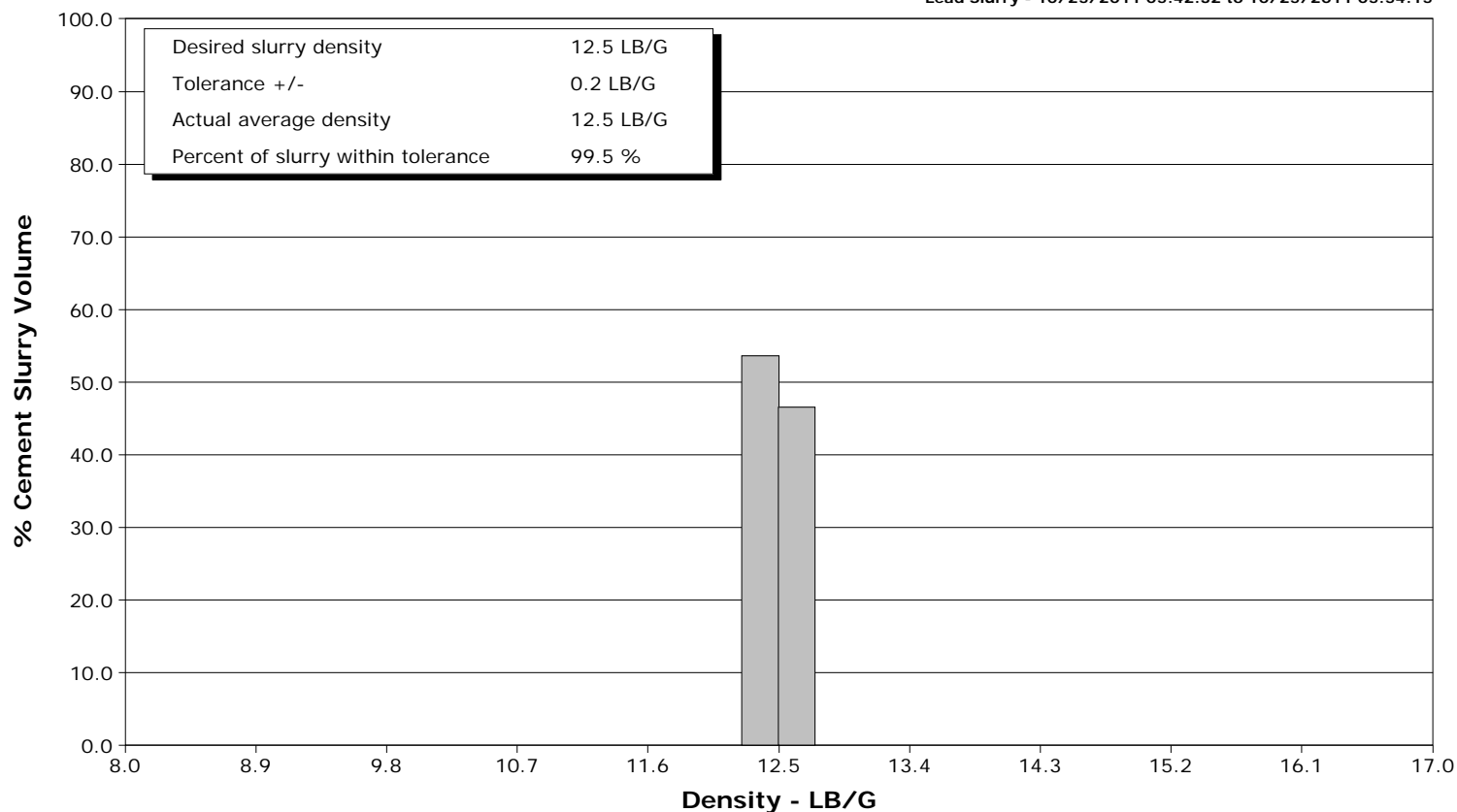
Client EnCana
SIR No. 000663970
Job Type 9 5/8 Surface
Job Date 10-25-2011



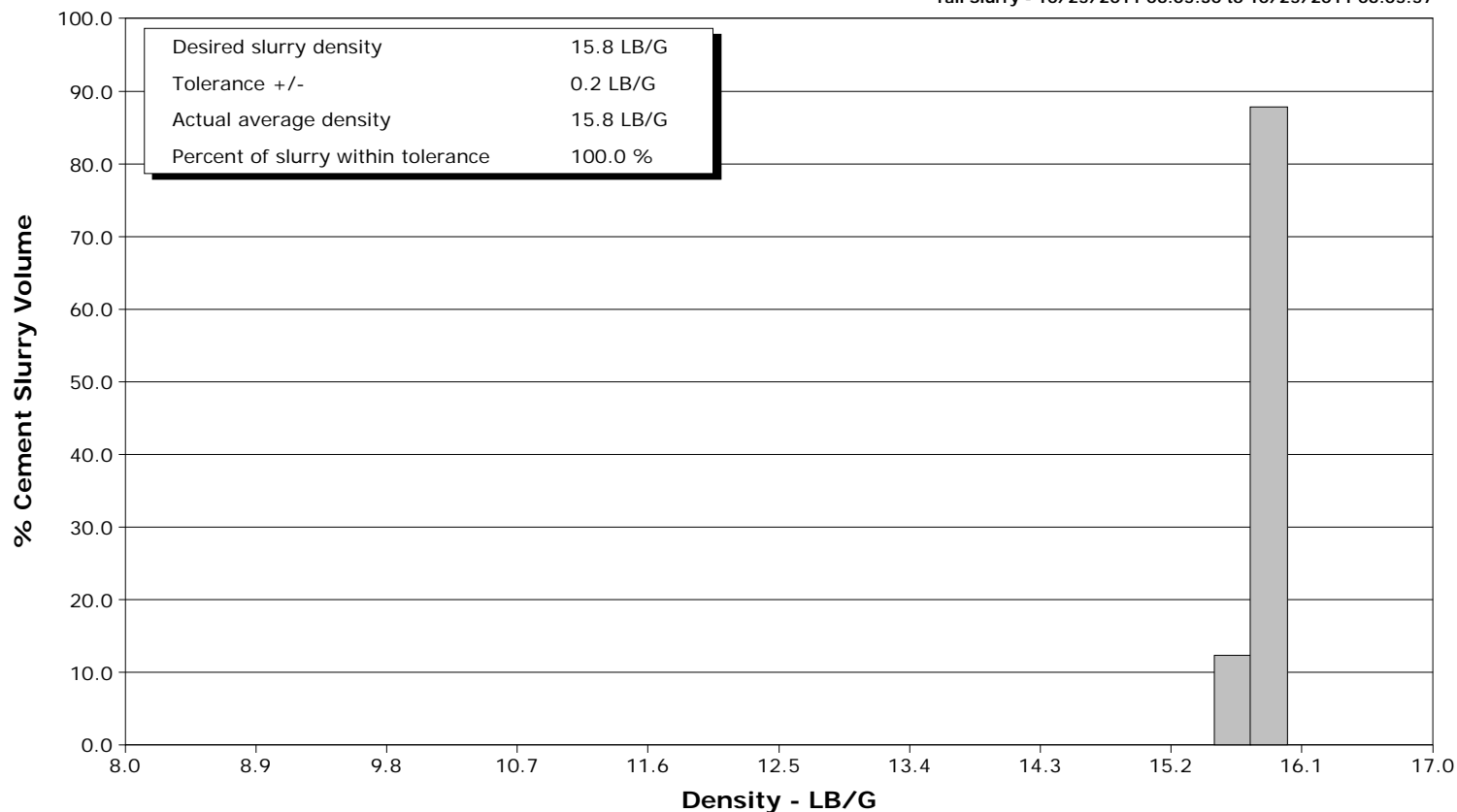
Well BENZEL FEE 25-7E
Field North Parachute
Engineer Dustin Krueger
Country United States

Client EnCana
SIR No. 000663970
Job Type 9 5/8 Surface
Job Date 10-25-2011

Lead Slurry - 10/25/2011 05:42:32 to 10/25/2011 05:54:15



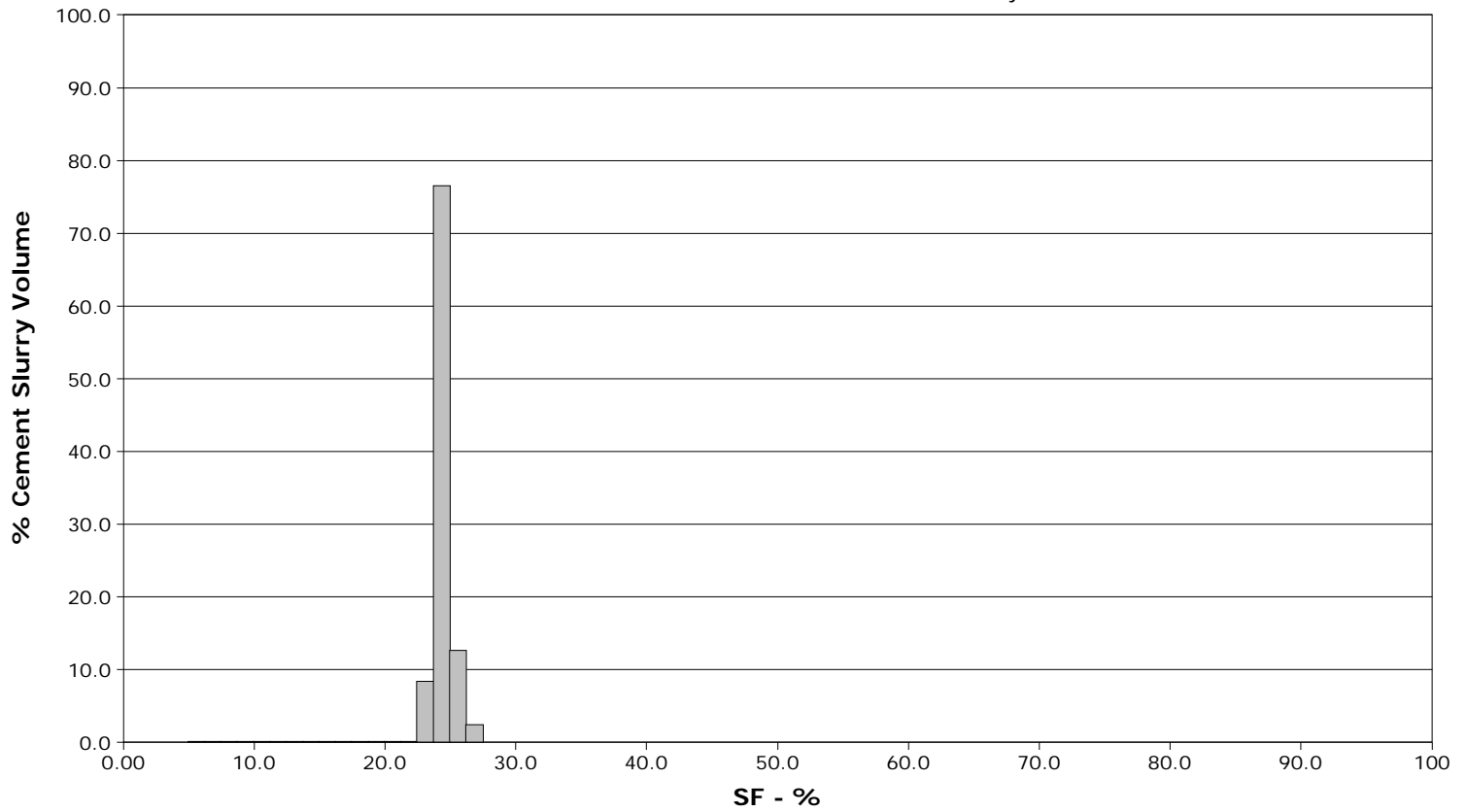
Tail Slurry - 10/25/2011 06:05:30 to 10/25/2011 06:05:57



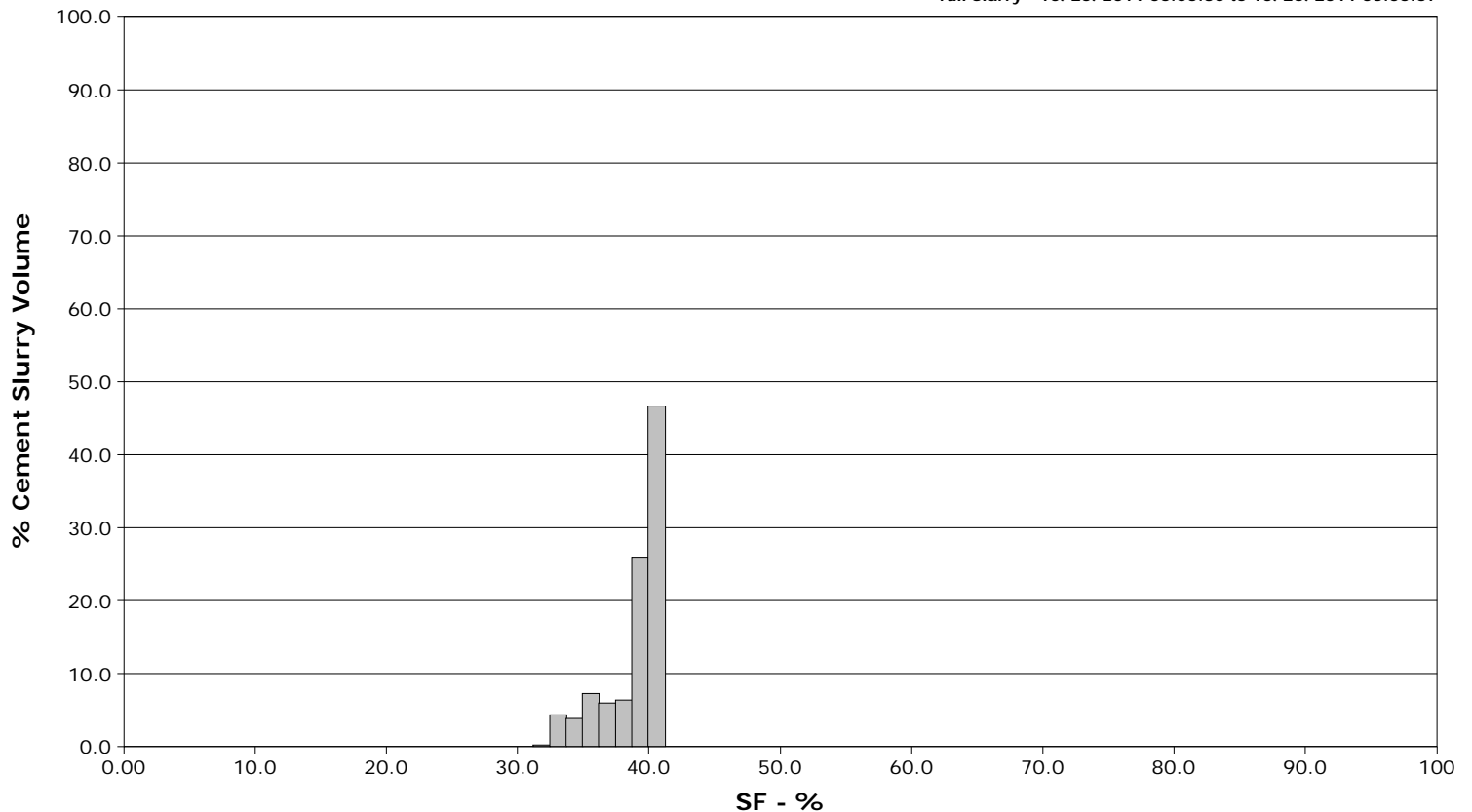
Well BENZEL FEE 25-7E
Field North Parachute
Engineer Dustin Krueger
Country United States

Client EnCana
SIR No. 000663970
Job Type 9 5/8 Surface
Job Date 10-25-2011

Lead Slurry - 10/25/2011 05:42:32 to 10/25/2011 05:54:15



Tail Slurry - 10/25/2011 06:05:30 to 10/25/2011 06:05:57



Cementing Service Report

					Customer EnCana			Job Number 000663970							
Well BENZEL FEE 25-7E BENZEL FEE 25-7E				Location (legal)			Schlumberger Location Grand Junction			Job Start Oct/25/2011					
Field North Parachute		Formation Name/Type Shale			Deviation 15 deg		Bit Size 12.3 in		Well MD 1448.0 ft		Well TVD 1448.0 ft				
County Garfield		State/Province Colorado			BHP psi		BHST 95 degF		BHCT 82 degF		Pore Press. Gradient lb/gal				
Well Master 0631294408		API/UWI													
Rig Name Patterson 326		Drilled For Gas		Service Via Land		Casing/Liner									
						Depth, ft		Size, in		Weight, lb/ft		Grade	Thread		
Offshore Zone		Well Class New		Well Type Development		40.0		16.0		65.0		N/A	N/A		
						1448.0		9.6		36.0		K55	8RD		
Drilling Fluid Type Bentonite		Max. Density 9.00 lb/gal		Plastic Viscosity 70.000 cP		Tubing/Drill Pipe									
						T/D		Depth, ft		Size, in		Weight, lb/ft		Grade	Thread
Service Line Cementing		Job Type 9 5/8 Surface								0.0		0.0			
										0.0		0.0			
Max. Allowed Tub. Press 4500 psi		Max. Allowed Ann. Press 1500 psi		WH Connection Single Cement head		Perforations/Open Hole									
						Top, ft		Bottom, ft		shot/ft		No. of Shots		Total Interval ft	
Service Instructions Cement a 9 5/8 Surface Casing @ 1448' using: 20bbl Fresh Water 113bbl (301sks) of 12.5ppg Cement (Yeld = 2.11) 28bbl (134sks) of 15.8ppg Cement (Yeld = 1.17) Drop a 9 5/8 Schlumberger Rubber plug Displace 108bbl fresh Water						ft		ft							
						ft		ft						Diameter in	
						ft		ft							
		Treat Down Casing		Displacement 108.3 bbl		Packer Type		Packer Depth ft							
		Tubing Vol. bbl		Casing Vol. 111.9 bbl		Annular Vol. 84.0 bbl		Openhole Vol. 199.0 bbl							
Casing/Tubing Secured <input checked="" type="checkbox"/>		1 Hole Vol. Circulated prior to Cement <input checked="" type="checkbox"/>				Casing Tools			Squeeze Job						
Lift Pressure 339 psi						Shoe Type Guide			Squeeze Type						
Pipe Rotated <input type="checkbox"/>		Pipe Reciprocated <input type="checkbox"/>				Shoe Depth 1448.0 ft			Tool Type						
No. Centralizers 70		Top Plugs 1		Bottom Plugs 0		Stage Tool Type			Tool Depth ft						
Cement Head Type Single						Stage Tool Depth ft			Tail Pipe Size in						
Job Scheduled For Oct/25/2011 03:00		Arrived on Location Oct/25/2011 03:00		Leave Location Oct/25/2011 08:00		Collar Type Float			Tail Pipe Depth ft						
						Collar Depth 1401.0 ft			Sqz. Total Vol. bbl						
Date	Time 24-hr clock	Treating Pressure PSI	Flow Rate B/M	Density LB/G	Volume BBL	Solid Fraction NULL	Message								
10/25/2011	05:17:26	-0	0.0	8.37	0.0	0	Started Acquisition								
10/25/2011	05:17:27	0	0.0	8.37	0.0	0	2bbl fresh water Pre Flush								
10/25/2011	05:17:29	0	0.0	8.37	0.0	0	Pressure Test Lines								
10/25/2011	05:17:30	0	0.0	8.37	0.0	0	Low 500psi test = Good								
10/25/2011	05:17:32	0	0.0	8.37	0.0	0	Pressure Test Lines								
10/25/2011	05:17:34	0	0.0	8.37	0.0	0	High 3500psi test = Good								
10/25/2011	05:17:36	1	0.0	8.37	0.0	0	Start Pumping Spacer								
10/25/2011	05:17:38	0	0.0	8.37	0.0	0	20bbl fresh water								
10/25/2011	05:19:56	25	2.3	8.38	0.2	0									
10/25/2011	05:22:26	56	0.0	8.37	3.1	0									
10/25/2011	05:24:56	3302	0.0	8.37	3.1	0									
10/25/2011	05:27:26	13	0.0	8.37	3.1	0									
10/25/2011	05:29:56	106	3.8	8.37	9.3	0									
10/25/2011	05:32:26	95	3.9	8.34	18.9	0									
10/25/2011	05:34:39	125	3.8	8.32	27.4	0	End Spacer								
10/25/2011	05:34:40	125	3.8	8.32	27.5	0	Start Cement Slurry								
10/25/2011	05:34:56	115	3.8	8.30	28.5	0									
10/25/2011	05:37:26	152	3.7	12.56	37.9	24									
10/25/2011	05:39:56	210	5.0	12.29	50.1	29									
10/25/2011	05:42:26	190	4.9	12.49	62.7	27									
10/25/2011	05:42:30	188	5.0	12.50	63.0	27	End Scavenger Slurry								

Well BENZEL FEE 25-7E BENZEL FEE 25-7E			Field North Parachute		Job Start Oct/25/2011	Customer EnCana	Job Number 000663970
Date	Time 24-hr clock	Treating Pressure PSI	Flow Rate B/M	Density LB/G	Volume BBL	Solid Fraction NULL	Message
10/25/2011	05:42:37	208	5.0	12.50	63.6	27	113bbl(301sks) of 12.5ppg Cement (Yeld = 2.11)
10/25/2011	05:44:56	293	6.4	12.53	77.0	25	
10/25/2011	05:47:26	291	6.5	12.48	93.1	24	
10/25/2011	05:49:56	274	6.4	12.49	109.2	24	
10/25/2011	05:52:26	287	6.4	12.56	125.3	24	
10/25/2011	05:54:15	155	4.6	12.45	136.5	23	End Lead Slurry
10/25/2011	05:54:16	137	4.6	12.46	136.6	23	Start Mixing Scav Slurry
10/25/2011	05:54:56	149	4.6	12.46	139.6	23	
10/25/2011	05:57:26	101	2.6	15.86	148.8	38	
10/25/2011	05:59:56	82	2.4	15.78	154.9	42	
10/25/2011	06:02:26	345	5.0	15.67	164.5	42	
10/25/2011	06:04:56	102	2.9	15.57	172.9	22	
10/25/2011	06:05:30	103	2.9	15.66	174.5	32	End Scavenger Slurry
10/25/2011	06:05:55	106	2.8	15.85	175.7	40	28bbl(134sks) of 15.8ppg Cement (Yeld = 1.17)
10/25/2011	06:05:56	106	2.8	15.86	175.8	40	Mud Scale test reads 15.8ppg
10/25/2011	06:05:57	108	2.8	15.85	175.8	40	End Tail Slurry
10/25/2011	06:06:04	104	2.8	15.84	176.1	40	End Cement Slurry
10/25/2011	06:06:07	104	2.8	15.82	176.3	40	Drop Top Plug
10/25/2011	06:06:09	107	2.8	15.80	176.4	40	Reset Total, Vol = 176.34 bbl
10/25/2011	06:06:14	103	2.8	15.76	176.6	40	108bbl of Fresh water
10/25/2011	06:07:26	8	0.0	15.69	178.6	0	
10/25/2011	06:09:56	13	0.0	15.67	178.6	0	
10/25/2011	06:12:26	49	2.6	10.36	179.8	34	
10/25/2011	06:14:56	49	3.0	9.29	185.8	15	
10/25/2011	06:17:26	102	4.8	8.77	195.6	16	
10/25/2011	06:19:56	119	4.8	8.41	207.6	11	
10/25/2011	06:22:26	213	6.6	8.37	224.0	0	
10/25/2011	06:24:56	287	6.6	8.37	240.4	0	
10/25/2011	06:27:26	358	6.5	8.38	256.8	0	
10/25/2011	06:29:56	412	6.5	8.38	273.2	0	
10/25/2011	06:32:26	343	2.2	8.38	283.5	0	
10/25/2011	06:34:38	361	2.2	8.38	288.3	0	Cement to Surface at 50bbl away
10/25/2011	06:34:56	340	2.2	8.38	288.9	0	
10/25/2011	06:37:26	1349	0.0	8.38	293.3	0	
10/25/2011	06:39:56	1338	0.0	8.38	293.3	0	
10/25/2011	06:41:37	1334	0.0	8.38	293.3	0	Bump Top Plug
10/25/2011	06:41:41	1333	0.0	8.38	293.3	0	Held pressure for 5min
10/25/2011	06:42:26	-2	0.0	8.38	293.3	0	
10/25/2011	06:44:56	-2	0.0	8.38	293.3	0	
10/25/2011	06:47:26	0	0.0	8.38	293.3	0	

Well BENZEL FEE 25-7E BENZEL FEE 25-7E	Field North Parachute	Job Start Oct/25/2011	Customer EnCana	Job Number 000663970
--	---------------------------------	---------------------------------	---------------------------	--------------------------------

Post Job Summary

Average Pump Rates, bbl/min					Volume of Fluid Injected, bbl					
Slurry 4.3	N2	Mud 0.0	Maximum Rate 9.2		Total Slurry 141.0	Mud 0.0	Spacer 20.0	N2		
Treating Pressure Summary, psi					Breakdown Fluid					
Maximum 4131	Final -2	Average 331	Bump Plug to 1300	Breakdown 267	Type FreshWater	Volume 312.0 bbl		Density 8.34 lb/gal		
Avg. N2 Percent %		Designed Slurry Volume 141.0 bbl		Displacement 108.0 bbl		Mix Water Temp 70 degF		Cement Circulated to Surface? <input checked="" type="checkbox"/>		Volume 58.0 bbl
								Washed Thru Perfs <input type="checkbox"/>		To ft
Customer or Authorized Representative Curt Childers				Schlumberger Supervisor Dustin Krueger				Circulation Lost <input type="checkbox"/>		Job Completed <input checked="" type="checkbox"/>
								-		-