

Steil Surveying Services, LLC

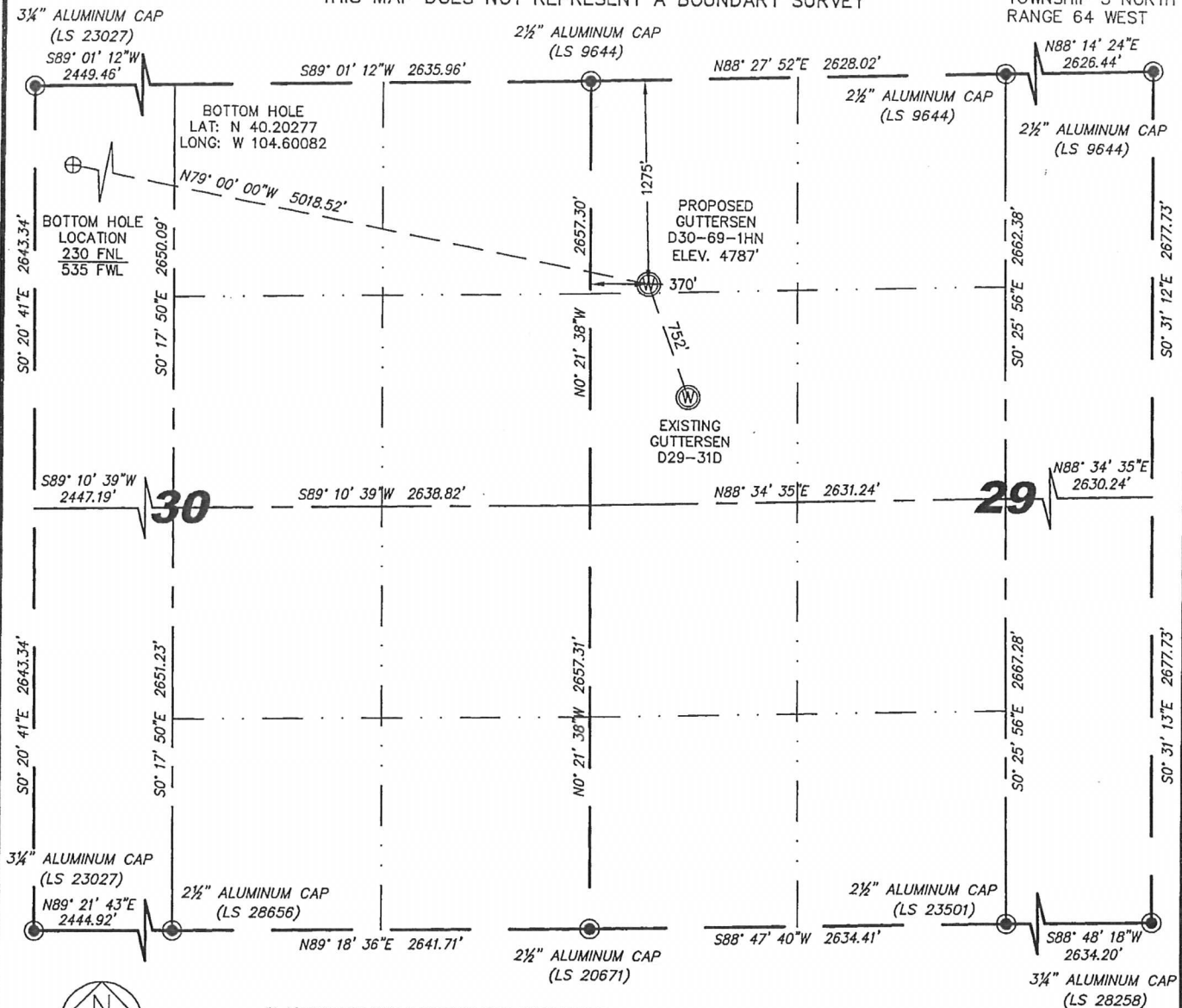
1102 West 19th Street P.O. BOX 2073

Cheyenne, Wyoming 82009

WELL LOCATION CERTIFICATE

THIS MAP DOES NOT REPRESENT A BOUNDARY SURVEY

SECTIONS 29 & 30
TOWNSHIP 3 NORTH
RANGE 64 WEST



IN ACCORDANCE WITH A REQUEST FROM BRIAN DEROSE - NOBLE ENERGY INC, STEIL SURVEYING SERVICES, LLC HAS DETERMINED THE LOCATION OF THE GUTTERSEN D30-69-1HN WELL TO BE 1275' FNL, 370' FWL, AS MEASURED AT NINETY (90) DEGREES FROM THE SECTION LINES, SECTION 29, TOWNSHIP 3 NORTH, RANGE 64 WEST, 6TH PRINCIPLE MERIDIAN, WELD COUNTY, COLORADO.

I HEREBY CERTIFY THAT THIS WELL LOCATION CERTIFICATE WAS PREPARED BY ME, OR UNDER MY DIRECT SUPERVISION, THAT THE FIELD WORK WAS COMPLETED ON 10/28/2011, FOR AND ON BEHALF OF NOBLE ENERGY INC, THAT IT IS NOT A LAND SURVEY PLAT OR AN IMPROVEMENT SURVEY PLAT, AND THAT IT IS NOT TO BE RELIED UPON FOR ESTABLISHMENT OF FENCE, BUILDING, OR OTHER FUTURE IMPROVEMENT LINES.

NOTES:

- 1) BASIS OF BEARINGS FOR THIS MAP ARE BASED UPON GPS OBSERVATIONS MADE ON 10/17/2011 BETWEEN MONUMENTS LOCATED AT THE SOUTHEAST SECTION CORNER AND THE NORTHEAST SECTION CORNER OF SAID SECTION AND WITH ALL BEARINGS SHOWN HEREON RELATIVE THERETO.
- 2) COORDINATES SHOWN ARE COLORADO STATE PLANE (NORTH ZONE) NAD 83.
- 3) ELEVATIONS ARE BASED UPON NGS OPUS SOLUTION NAVD 88 DATUM.
- 4) THE NEAREST EXISTING WELL IS: GUTTERSEN D29-31D, 752' SOUTHEAST.
- 5) SEE LOCATION DRAWING FOR ALL IMPROVEMENTS WITHIN VISIBLE IMPROVEMENTS LIMIT.
- 6) THE LOCATION FALLS IN PASTURE LAND.

LATITUDE & LONGITUDE (NAD 83 SURFACE HOLE):

LATITUDE: N 40.20000°
LONGITUDE: W 104.58322°
PDOP: 2.0
QUARTER-QUARTER: NW/4NW/4
NEAREST PROPERTY LINE: 370' TO THE WEST

NOTICE: According to Colorado law you MUST commence any legal action based upon any defect in this W.L.C. within three years after you first discover such defect. In no event may any action based upon any defect in this W.L.C. be commenced more than ten years from this said date of the certification shown hereon.

LEGEND

- FOUND SURVEY MONUMENT PER MONUMENT RECORD - EXCEPTIONS NOTED.
- (C) CALCULATED DIMENSION



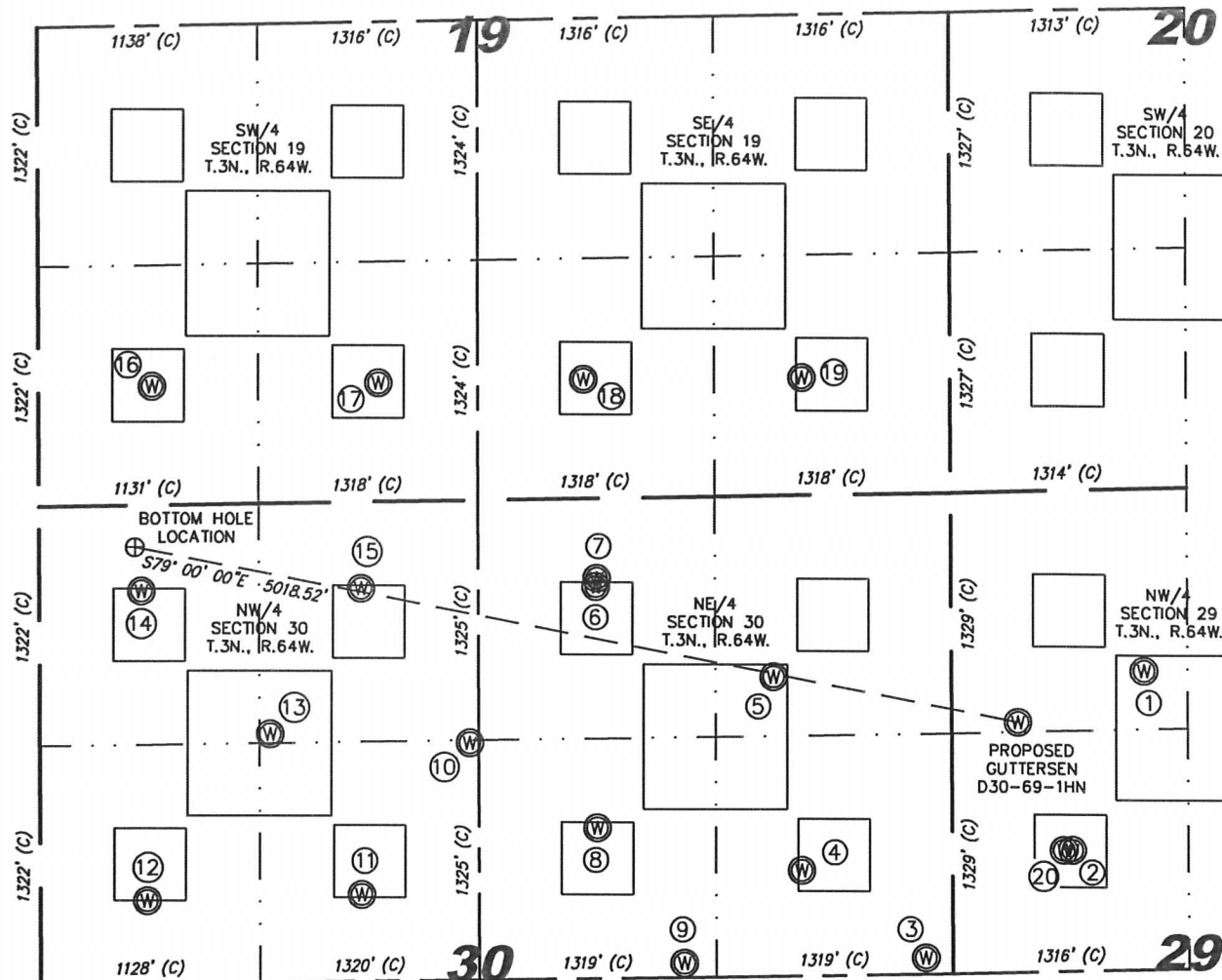
David C. Holmes
Professional Land Surveyor Registration No. 32828
State of Colorado

Completed 11/08/2011

JOB #: 11086

SECS. 29 & 30, T.3N., R.64W.

SKETCH - GUTTERSEN D30-69-1HN



① KATE RED D29-2J NW/NW SEC. 29 1008' FNL 1072' FWL EL 4778' N 40.20077 W 104.58071 PDOP 2.3	② KATE RED D29-5 SW/NW SEC. 29 1989' FNL 670' FWL EL 4783' N 40.19806 W 104.58216 PDOP 2.3	③ MCWILLIAMS D29-32 SE/NE SEC. 30 2566' FNL 151' FEL EL 4791' N 40.19644 W 104.58511 PDOP 2.5	④ HETTINGER D30-8 SE/NE SEC. 30 2073' FNL 841' FEL EL 4788' N 40.19778 W 104.58757 PDOP 2.3	⑤ HETTINGER 'C' UNIT NO. 1 NE/NE SEC. 30 1000' FNL 994' FEL EL 4784' N 40.20072 W 104.58810 PDOP 2.2	⑥ HETTINGER D30-2 NW/NE SEC. 30 486' FNL 1981' FEL EL 4782' N 40.20212 W 104.59163 PDOP 2.0	⑦ ADAMS D30-27D NW/NE SEC. 30 440' FNL 1976' FEL EL 4783' N 40.20224 W 104.59161 PDOP 2.0	⑧ HETTINGER D30-7 SW/NE SEC. 30 1820' FNL 1979' FEL EL 4787' N 40.19846 W 104.59164 PDOP 2.8
⑨ MCWILLIAMS D30-22 SW/NE SEC. 30 2574' FNL 1498' FWL EL 4790' N 40.19639 W 104.58993 PDOP 4.3	⑩ MCWILLIAMS D30-18 SE/NW SEC. 30 1340' FNL 2400' FWL EL 4785' N 40.19976 W 104.59417 PDOP 2.2	⑪ HETTINGER D30-6 SE/NW SEC. 30 2169' FNL 1792' FWL EL 4790' N 40.19747 W 104.59635 PDOP 2.8	⑫ HETTINGER D30-5 SW/NW SEC. 30 2185' FNL 596' FWL EL 4789' N 40.19741 W 104.60064 PDOP 2.3	⑬ MCWILLIAMS D30-19 NE/NW SEC. 30 1274' FNL 1285' FWL EL 4786' N 40.19992 W 104.59816 PDOP 2.1	⑭ HETTINGER D30-4 NW/NW SEC. 30 472' FNL 570' FWL EL 4784' N 40.20211 W 104.60070 PDOP 2.4	⑮ HETTINGER D30-3 NE/NW SEC. 30 477' FNL 1795' FWL EL 4783' N 40.20212 W 104.59632 PDOP 3.6	⑯ BUTTERBALL 14-19 SW/SW SEC. 19 657' FSL 635' FWL EL 4782' N 40.20521 W 104.60045 PDOP 2.8
⑰ BUTTERBALL 24-19 SE/SW SEC. 19 654' FSL 1896' FWL EL 4779' N 40.20522 W 104.59594 PDOP 2.3	⑱ LDS WHITE D19-15 SW/SE SEC. 19 658' FSL 2044' FEL EL 4777' N 40.20526 W 104.59184 PDOP 2.5	⑲ LDS WHITE D19-16 SE/SE SEC. 19 648' FSL 828' FEL EL 4777' N 40.20525 W 104.58749 PDOP 2.1	⑳ GUTTERSEN D29-31D SW/NW SEC. 29 1988' FNL 622' FWL EL 4784' N 40.19806 W 104.58233 PDOP 2.1	<p>Scale: 1" = 1000'</p>			

- NOTES:
- THIS SKETCH DOES NOT REPRESENT A BOUNDARY SURVEY.
 - THE DATUM FOR THE LATITUDES AND LONGITUDES ON THIS SKETCH IS NAD83.