

Project: Weld County Colorado (NAD 83)
 Site: Sec. 29, T3N, R64W
 Well: Guttersen D30-69-1HN
 Wellbore: Plan A Rev 0 (PERMITTING PLAN ONLY)
 Design: Plan A Rev 0 Proposal

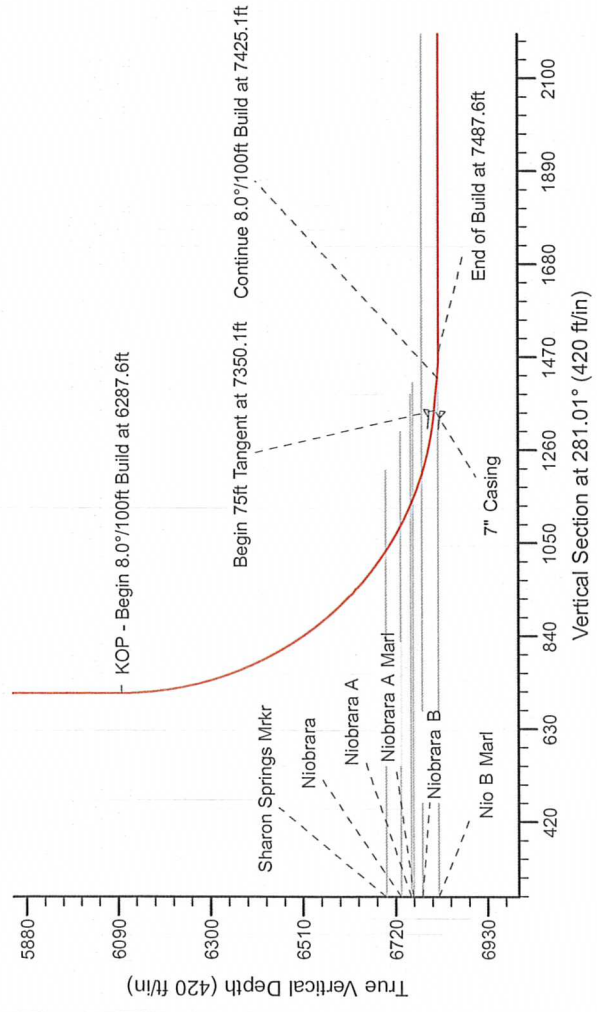
Noble Energy



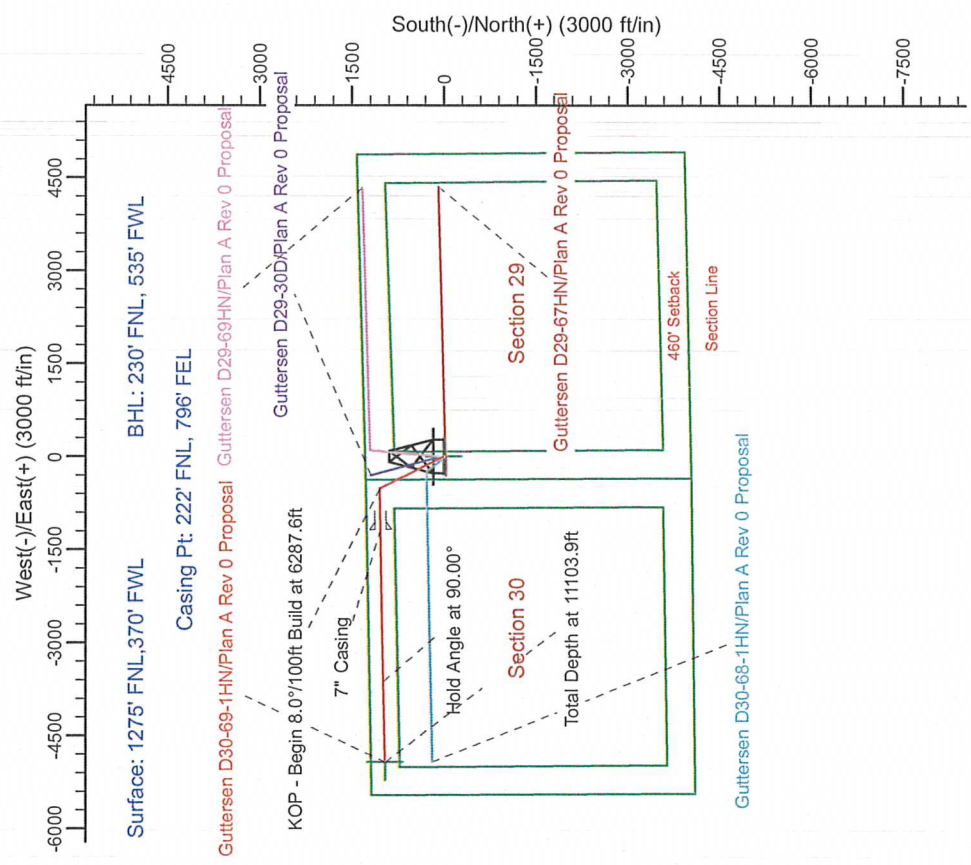
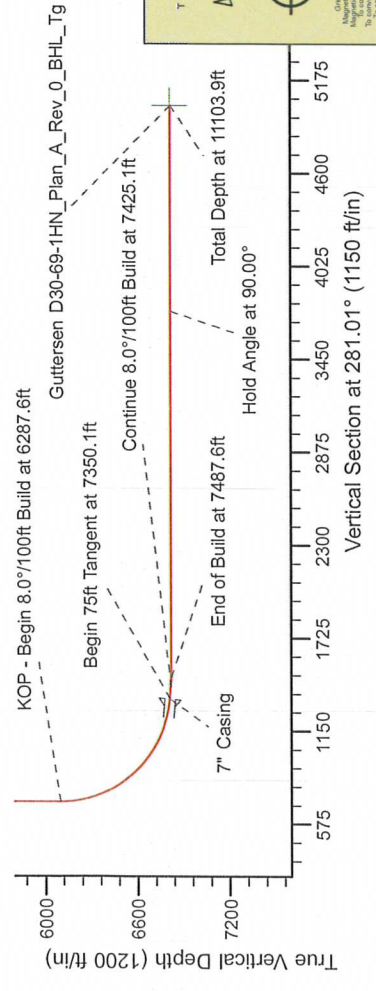
SECTION DETAILS

Sec	MD	Inc	Azi	TVD	+N/-S	+E/-W	Dleg	TFace	Vsect	Target
1	0.0	0.00	0.00	0.0	0.0	0.0	0.00	0.00	0.0	
2	1500.0	0.00	0.00	1500.0	0.0	0.0	0.00	0.00	0.0	
3	2300.0	20.00	333.54	2283.9	123.7	-61.6	2.50	333.54	84.1	
4	4904.5	20.00	333.54	4731.3	921.3	-458.4	0.00	0.00	625.9	
5	5704.5	0.00	0.00	5515.2	1045.0	-520.0	2.50	180.00	710.0	
6	6287.6	0.00	0.00	6098.2	1045.0	-520.0	0.00	0.00	710.0	
7	7350.1	85.00	268.88	6811.7	1032.2	-1173.7	8.00	268.88	1349.2	
8	7425.1	85.00	268.88	6818.2	1030.8	-1248.4	0.00	0.00	1422.2	
9	7487.6	90.00	268.88	6820.9	1029.5	-1310.8	8.00	0.00	1483.3	
10	11103.9	90.00	268.88	6821.0	958.7	-4926.4	0.00	-118.07	5018.9	

Guttersen D30-69-1HN_Plan_A_Rev_0_BHL_Tg



Vertical Section at 281.01° (420 ft/in)



WELL DETAILS: Guttersen D30-69-1HN (NAD83 Geodetic System)

Ground Level: 4787.0
 Northing: 401430.40 Easting: 992455.60
 Latitude: 40° 12' 0.000 N Longitude: 104° 34' 59.592 W

Plan: Plan A Rev 0 Proposal (Guttersen D30-69-1HN/Plan A Rev 0 (PERMITTING PLAN ONLY))

Created By: Jose Patino Date: 5:45, January 17 2012

Magnetic North: 005°20'00"E
 Azimuth to Grid North: 0.00°
 True North: -0.00°
 Magnetic North: 0.00°
 Strength: 5000 Gauss
 Date: 1/16/2012

Grid North is 0.00° East of True North (Grid Convergence)
 Magnetic North is 0.00° East of Grid North (Magnetic Convergence)
 To convert a Magnetic Direction to a True Direction, Add 0.00° East
 To convert a True Direction to a Magnetic Direction, Add 0.00° East