

DALEY LAND SURVEYING, INC.

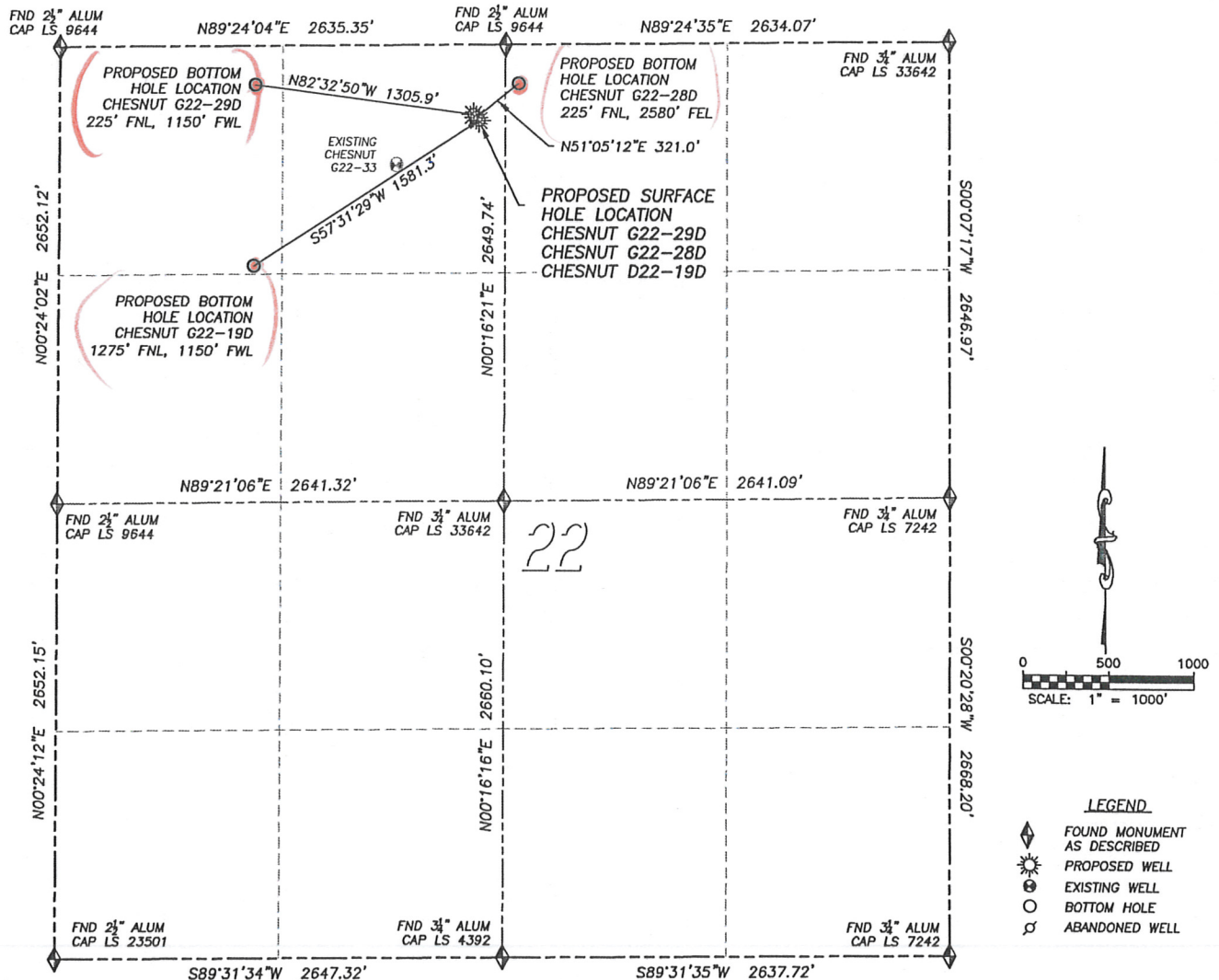
PARKER, CO. 80134

303 953 9841

MULTI-WELL PAD DIRECTIONAL LAYOUT

CHESNUT G22-29D, CHESNUT G22-28D & CHESNUT G22-19D

SECTION 22, TOWNSHIP 4 NORTH, RANGE 65 WEST OF THE 6TH PRINCIPAL MERIDIAN



NAD 83 LATITUDE AND LONGITUDE

CHESNUT G22-29D SURFACE HOLE:

LATITUDE: N40.30405°
 LONGITUDE: W104.64990°
 ELEVATION: 4735'
 FOOTAGE: 408' FNL, 2446' FWL
 PDOP: 1.6
 QTR/QTR: NE4/NW4
 PROP LINE: 190'± EAST

BOTTOM HOLE:

LATITUDE: N40.30455°
 LONGITUDE: W104.65453°
 FOOTAGE: 225' FNL, 1150' FWL

NEAREST EXISTING WELL:

CHESNUT G22-3 SURFACE HOLE
 LATITUDE: N40.30325°
 LONGITUDE: W104.65154°
 ELEVATION: 4744'
 543' SOUTHWEST

NAD 83 LATITUDE AND LONGITUDE

CHESNUT G22-28D SURFACE HOLE:

LATITUDE: N40.30400°
 LONGITUDE: W104.64984°
 ELEVATION: 4735'
 FOOTAGE: 424' FNL, 2462' FWL
 PDOP: 1.6
 QTR/QTR: NE4/NW4
 PROP LINE: 174'± EAST

BOTTOM HOLE:

LATITUDE: N40.30455°
 LONGITUDE: W104.64894°
 FOOTAGE: 225' FNL, 2580' FEL

NEAREST EXISTING WELL:

CHESNUT G22-3 SURFACE HOLE
 LATITUDE: N40.30325°
 LONGITUDE: W104.65154°
 ELEVATION: 4744'
 549' SOUTHWEST

NAD 83 LATITUDE AND LONGITUDE

CHESNUT G22-19D SURFACE HOLE:

LATITUDE: N40.30396°
 LONGITUDE: W104.64978°
 ELEVATION: 4735'
 FOOTAGE: 440' FNL, 2478' FWL
 PDOP: 1.7
 QTR/QTR: NE4/NW4
 PROP LINE: 158'± EAST

BOTTOM HOLE:

LATITUDE: N40.30167°
 LONGITUDE: W104.65459°
 FOOTAGE: 1275' FNL, 1150' FWL

NEAREST EXISTING WELL:

CHESNUT G22-3 SURFACE HOLE
 LATITUDE: N40.30325°
 LONGITUDE: W104.65154°
 ELEVATION: 4744'
 555' SOUTHWEST

DALEY LAND SURVEYING, INC.

PARKER, CO. 80134

303 953 9841

MULTI-WELL PAD LOCATION DRAWING
CHESNUT G22-29D, CHESNUT G22-28D & CHESNUT G22-19D
SECTION 22, TOWNSHIP 4 NORTH, RANGE 65 WEST OF THE 6TH PRINCIPAL MERIDIAN

