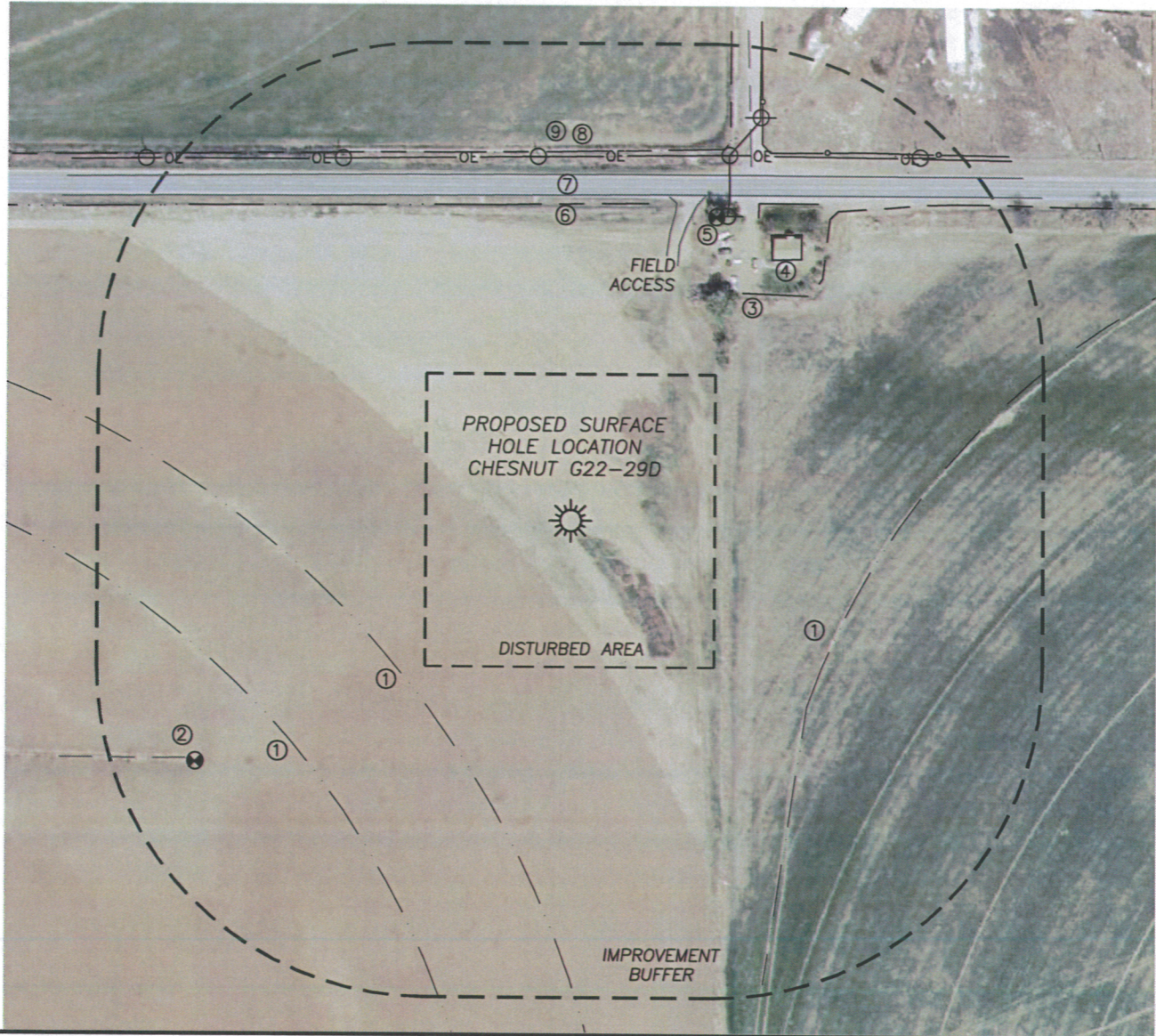


## LOCATION DRAWING CHESNUT G22-29D

SECTION 22, TOWNSHIP 4 NORTH, RANGE 65 WEST OF THE 6TH PRINCIPAL MERIDIAN



### IMPROVEMENTS

1. PIVOT TRACK:	277'± SW
	433'± SW
	350'± SE
2. GAS WELL:	543'± SW
3. IRRIG. DITCH:	347'± NE
4. BUILDING:	401'± NE
5. O.H. UTILITY/WATER WELL:	415'± NE
6. IRRIG. DITCH:	383'± N
7. S EDGE WCR 44:	394'± N
8. O.H. UTILITY:	440'± N
9. IRRIG. DITCH:	447'± N

### DISTANCE TO NEAREST:

BUILDING:	401'± NE
PUBLIC ROAD:	394'± N
ABOVE GRND UTILITY:	415'± NE
RAILROAD:	5280'+
PROP. LINE:	190'± E

