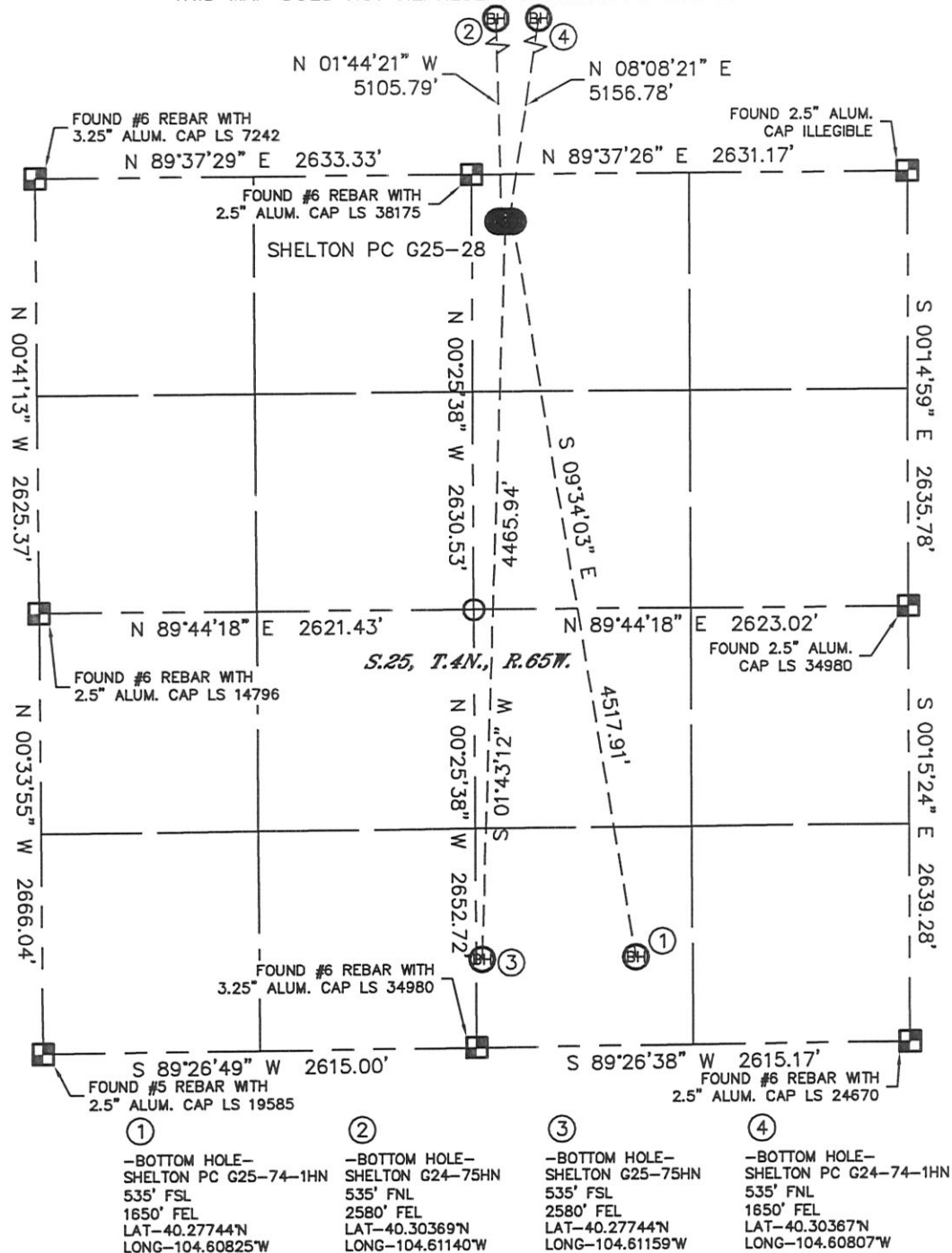


MULTI-WELL PLAN

SHELTON PC G24-74-1HN & 75HN, G25-74-1HN, 28
SHELTON G25-75HN

SECTION: 25
TOWNSHIP: 4N
RANGE: 65W



THIS MAP DOES NOT REPRESENT A BOUNDARY SURVEY

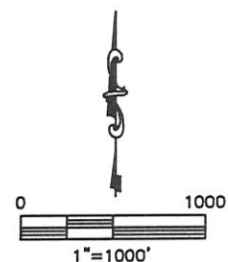


NOTE

According to Colorado law, you must commence any legal action based upon any defect in this drawing within three years after you discover such defect. In no event, may any action based upon any defect in this survey be commenced more than ten years after the date of the certificate shown hereon. (13-80-105 C.R.S.)

LEGEND

-  = ALIQUOT MONUMENT AS DESCRIBED
-  = CALCULATED POSITION



SHEET 1 OF 2

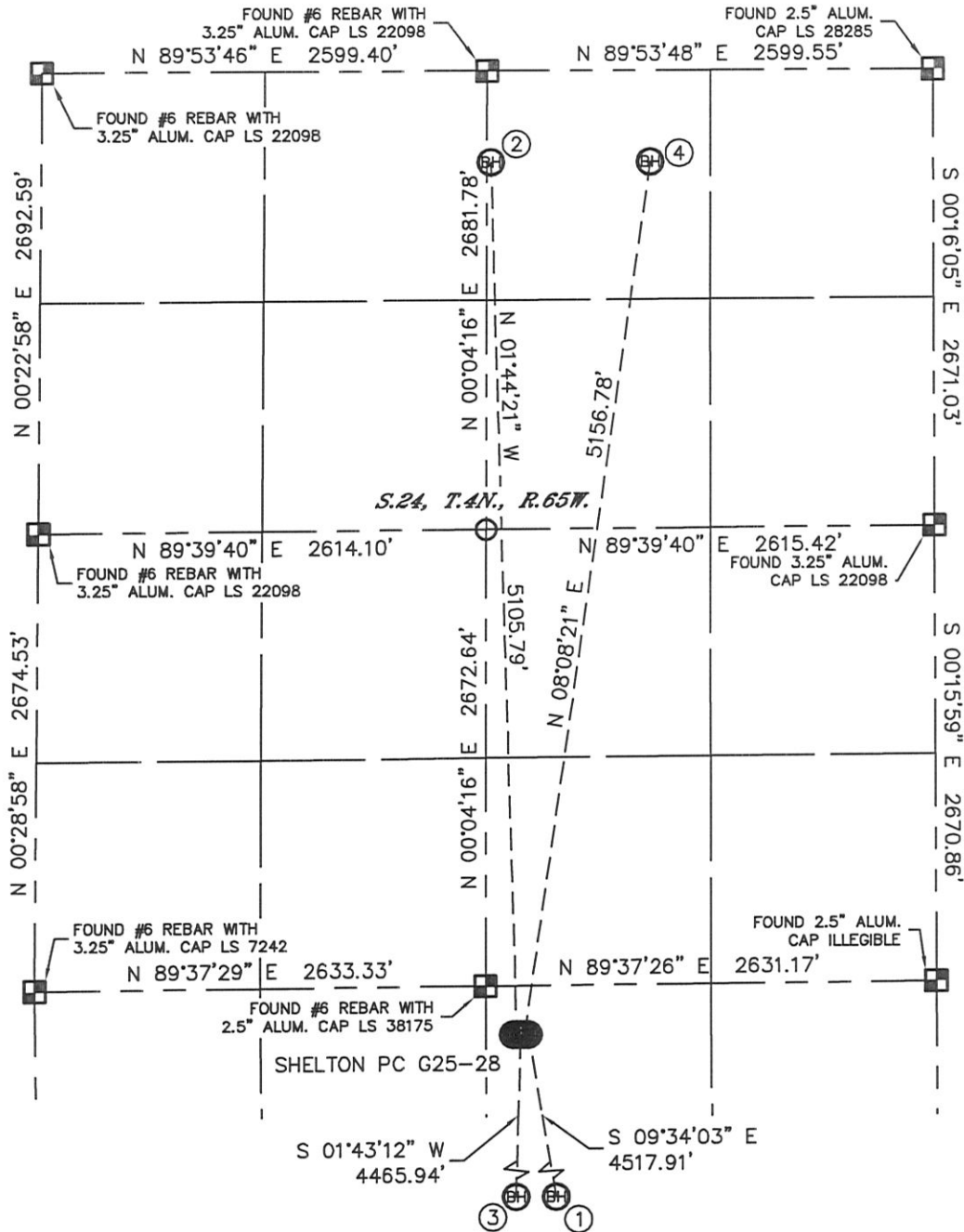
PROJECT#: 2010153

MULTI-WELL PLAN

SHELTON PC G24-74-1HN & 75HN, G25-74-1HN, 28
SHELTON G25-75HN

SECTION: 25
TOWNSHIP: 4N
RANGE: 65W

THIS MAP DOES NOT REPRESENT A BOUNDARY SURVEY

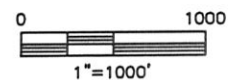


NOTE

According to Colorado law, you must commence any legal action based upon any defect in this drawing within three years after you discover such defect. In no event, may any action based upon any defect in this survey be commenced more than ten years after the date of the certificate shown hereon. (13-80-105 C.R.S.)

LEGEND

- = ALIQUOT MONUMENT AS DESCRIBED
- = CALCULATED POSITION



SHEET 2 OF 2

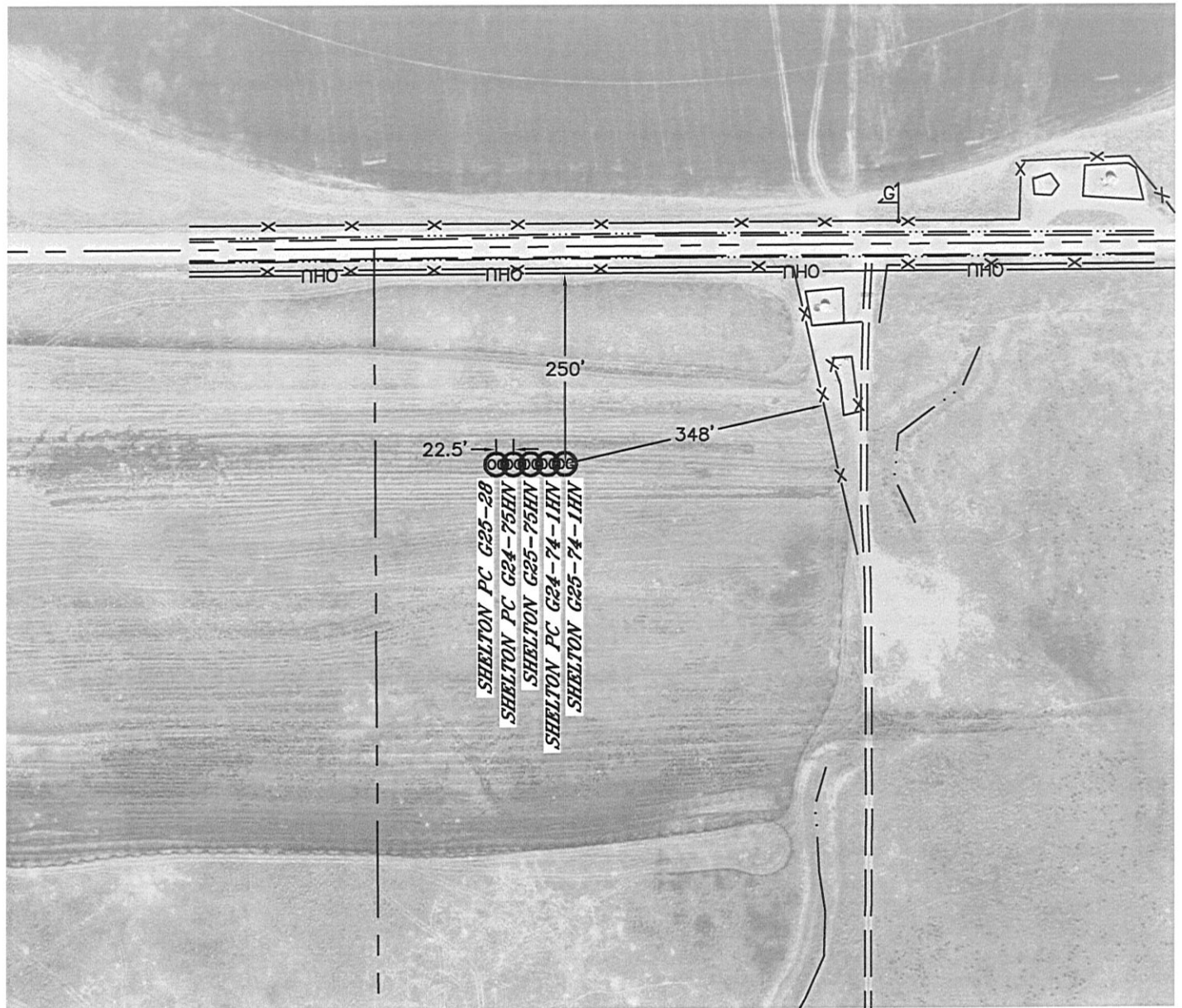
PROJECT#: 2010153

Lat40°, Inc. 1635 Foxtrail Drive, Suite 325 Loveland, CO 970-776-3321

MULTI-WELL PLAN

SHELTON PC G24-74-1HN & 75HN, G25-74-1HN, 28
SHELTON G25-75HN

SECTION: 25
TOWNSHIP: 4N
RANGE: 65W



0 200
1"=200'