

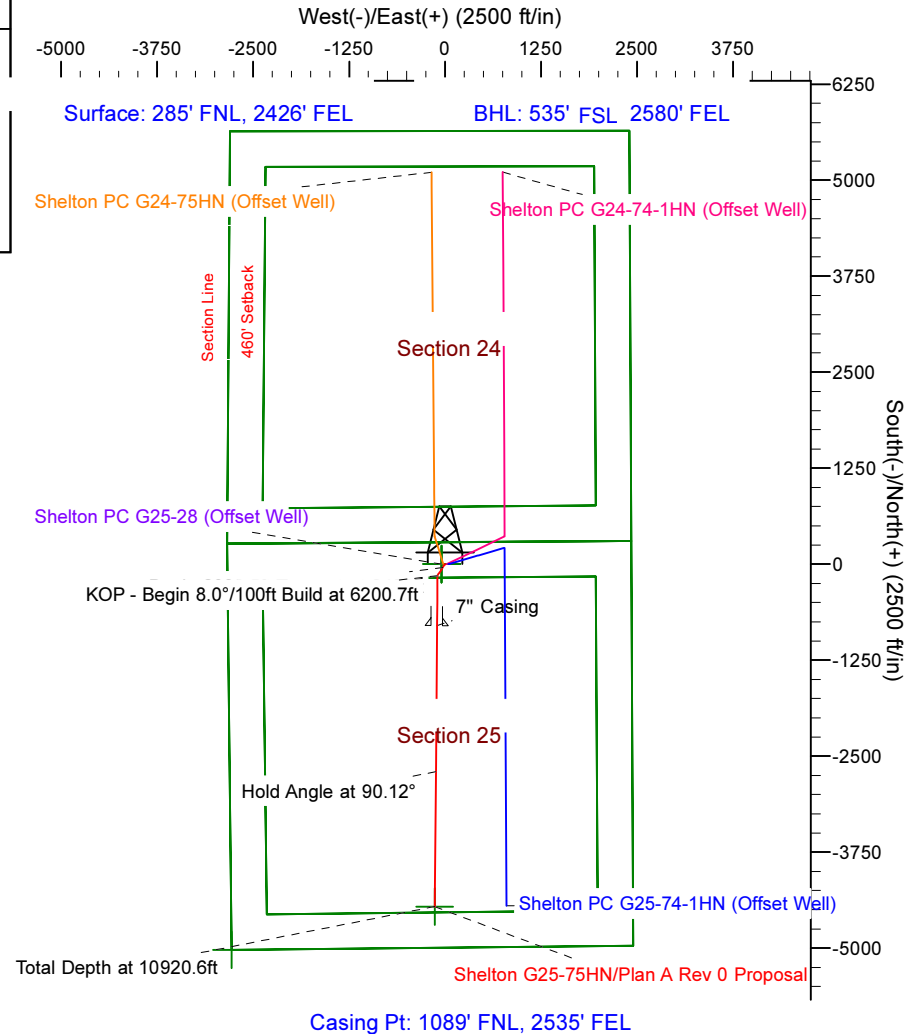
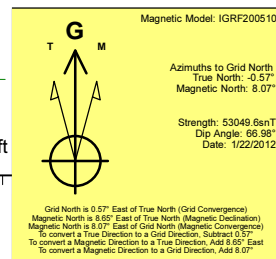
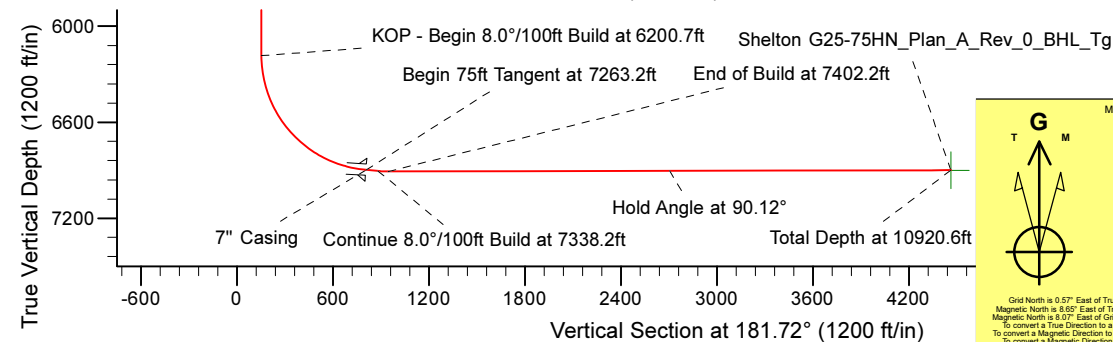
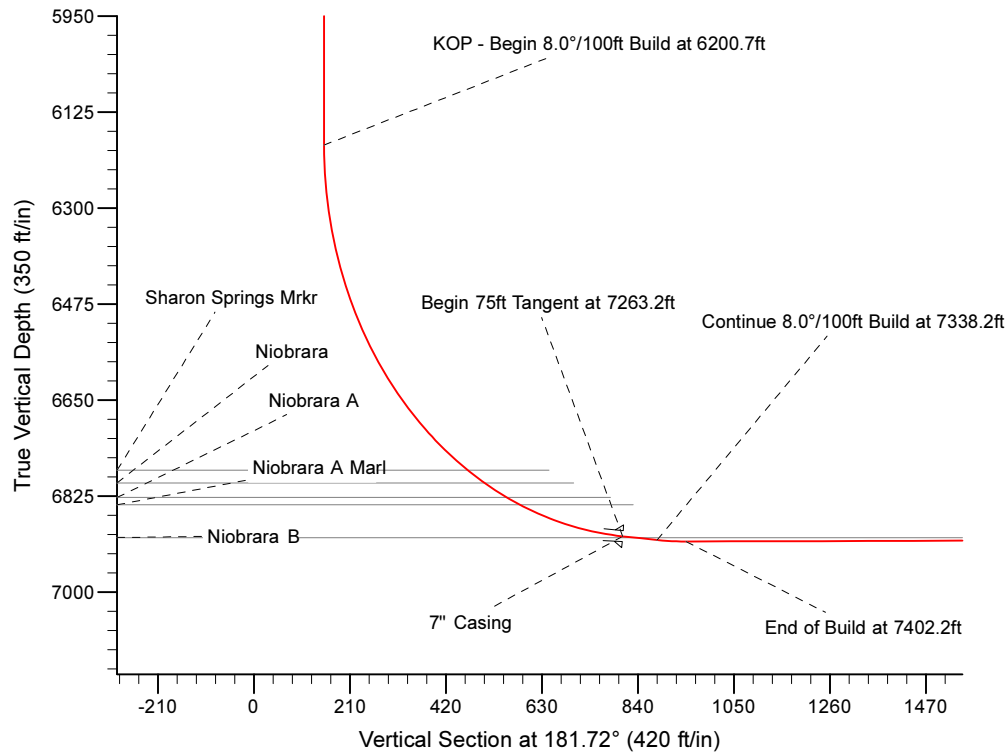
Project: Weld County Colorado (NAD 83)
 Site: Sec.25, T4N, R65W
 Well: Shelton G25-75HN
 Wellbore: Plan A Rev 0 (PERMITTING PLAN ONLY)
 Design: Plan A Rev 0 Proposal

Noble Energy

HALLIBURTON
 Sperry Drilling

SECTION DETAILS

Sec	MD	Inc	Azi	TVD	+N/-S	+E/-W	Dleg	TFace	VSec	Target
1	0.0	0.00	0.00	0.0	0.0	0.0	0.00	0.00	0.0	
2	2000.0	0.00	0.00	2000.0	0.0	0.0	0.00	0.00	0.0	
3	2480.0	12.00	213.69	2476.5	-41.7	-27.8	2.50	213.69	42.5	
4	2865.3	12.00	213.69	2853.4	-108.3	-72.2	0.00	0.00	110.4	
5	3345.3	0.00	0.00	3329.9	-150.0	-100.0	2.50	180.00	152.9	
6	6200.7	0.00	0.00	6185.3	-150.0	-100.0	0.00	0.00	152.9	
7	7263.2	85.00	180.45	6898.8	-803.8	-105.1	8.00	180.45	806.5	
8	7338.2	85.00	180.45	6905.3	-878.5	-105.7	0.00	0.00	881.2	
9	7402.2	90.12	180.45	6908.0	-942.4	-106.2	8.00	0.00	945.1	
10	0920.6	90.12	180.45	6900.7	-4460.6	-133.9	0.00	0.00	4462.7	Shelton G25-75HN_Plan_A_Rev_0_BHL_Tg



Casing Pt: 1089' FNL, 2535' FEL

WELL DETAILS: Shelton G25-75HN (NAD83 Geodetic System)

Ground Level: 4794.0
 Northing: 411363.44 Easting: 989994.94 Latitude: 40° 17' 22.848 N Longitude: 104° 36' 39.420 W

Plan: Plan A Rev 0 Proposal (Shelton G25-75HN/Plan A Rev 0 (PERMITTING PLAN ONLY))

Created By: Jose Patino

Date: 5:01, January 23 2012

OK to submit with 2A as per Noble Drilling
1/24/2012 16:46