

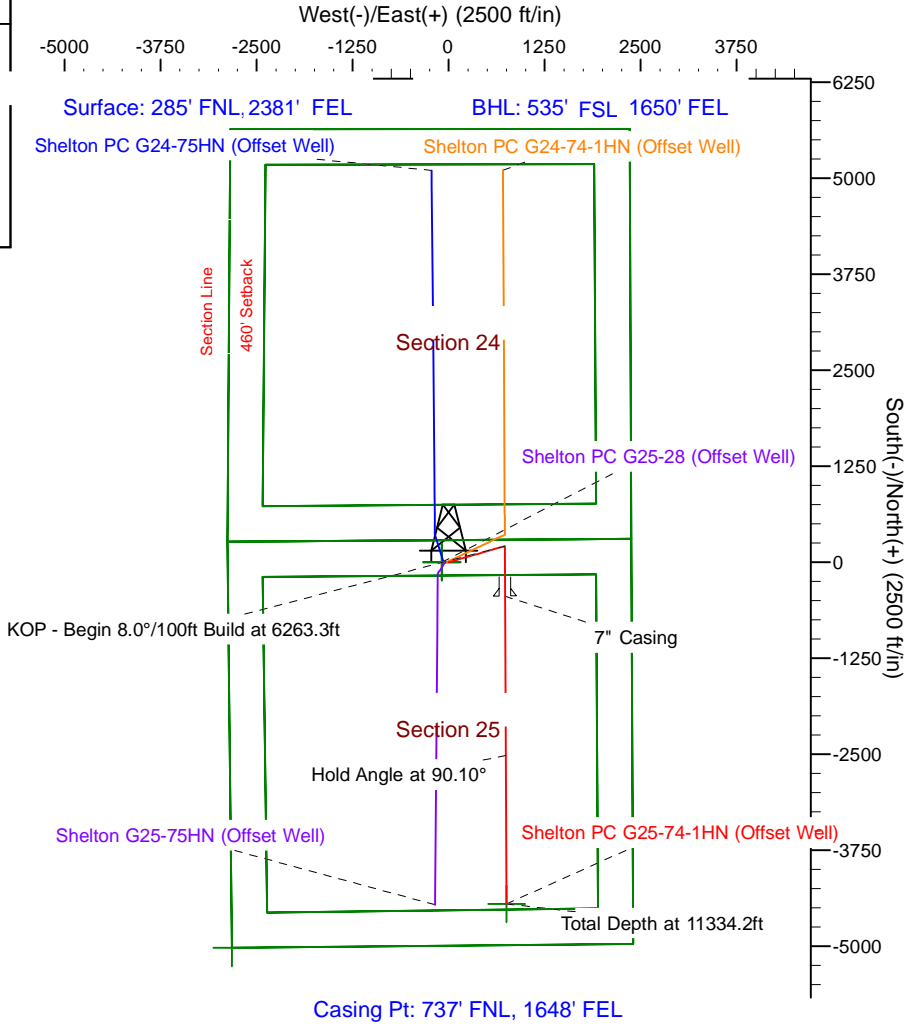
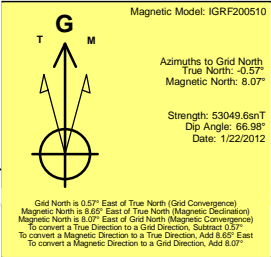
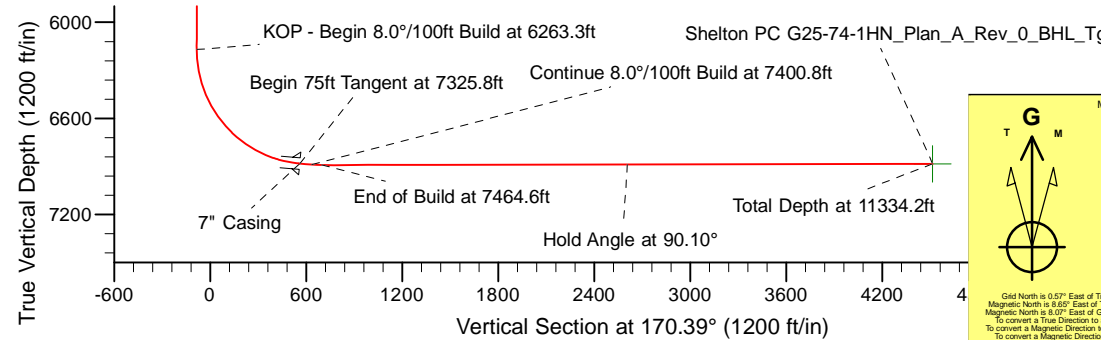
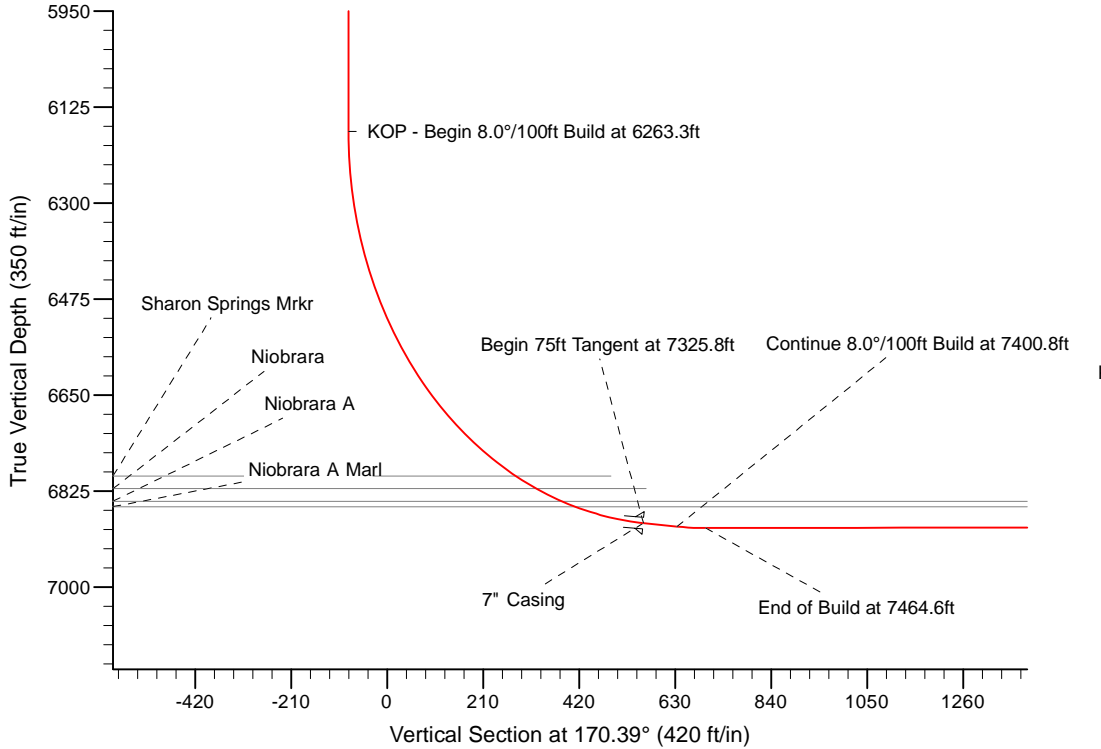
Project: Weld County Colorado (NAD 83)
 Site: Sec.25, T4N, R65W
 Well: Shelton PC G25-74-1HN
 Wellbore: Shelton PC G25-74-1HN (PERMITTING PLAN ONLY)
 Design: Plan A Rev 0 Proposal

Noble Energy



SECTION DETAILS

Sec	MD	Inc	Azi	TVD	+N/-S	+E/-W	Dleg	TFace	VSec	Target
1	0.0	0.00	0.00	0.0	0.0	0.0	0.00	0.00	0.0	
2	1200.0	0.00	0.00	1200.0	0.0	0.0	0.00	0.00	0.0	
3	1800.0	15.00	73.97	1793.2	21.6	75.1	2.50	73.97	-8.7	
4	4135.2	15.00	73.97	4048.8	188.4	655.9	0.00	0.00	-76.3	
5	4735.2	0.00	0.00	4641.9	210.0	731.0	2.50	180.00	-85.1	
6	6263.3	0.00	0.00	6170.1	210.0	731.0	0.00	0.00	-85.1	
7	7325.8	85.00	179.72	6883.6	-443.8	734.2	8.00	179.72	560.1	
8	7400.8	85.00	179.72	6890.1	-518.5	734.6	0.00	0.00	633.8	
9	7464.6	90.10	179.72	6892.8	-582.2	734.9	8.00	0.00	696.6	
10	11334.2	90.10	179.73	6886.1	-4451.7	753.4	0.00	96.21	4515.0	Shelton PC G25-74-1HN_Plan_A_Rev_0_BHL_Tg



WELL DETAILS: Shelton PC G25-74-1HN (NAD83 Geodetic System)				
Ground Level: 4795.0				
Northing	Easting	Latitude	Longitude	
411363.57	990008.55	40° 17' 22.848 N	104° 36' 38.844 W	
Plan: Plan A Rev 0 Proposal (Shelton PC G25-74-1HN/Shelton PC G25-74-1HN (PERMITTING PLAN ONLY))				
Created By: Jose Patino			Date: 7:26, January 23 2012	
OK to submit with 2A as per Noble Drilling 1/24/2012 16:46				